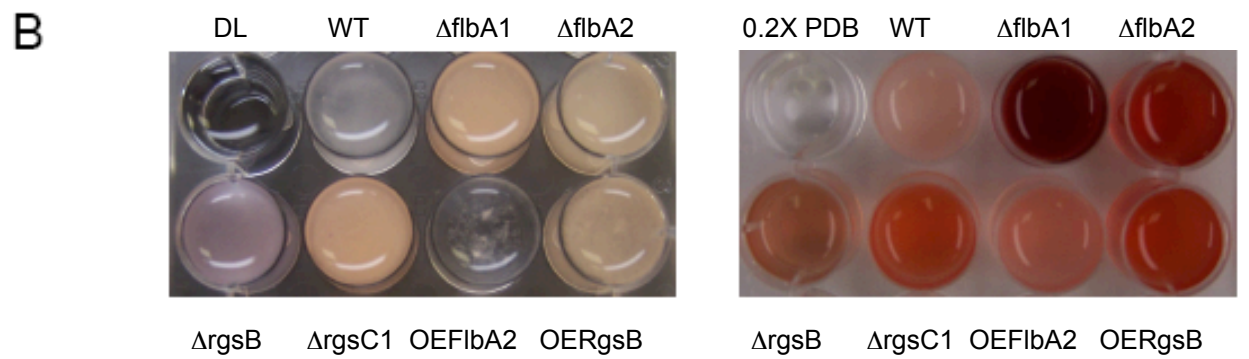
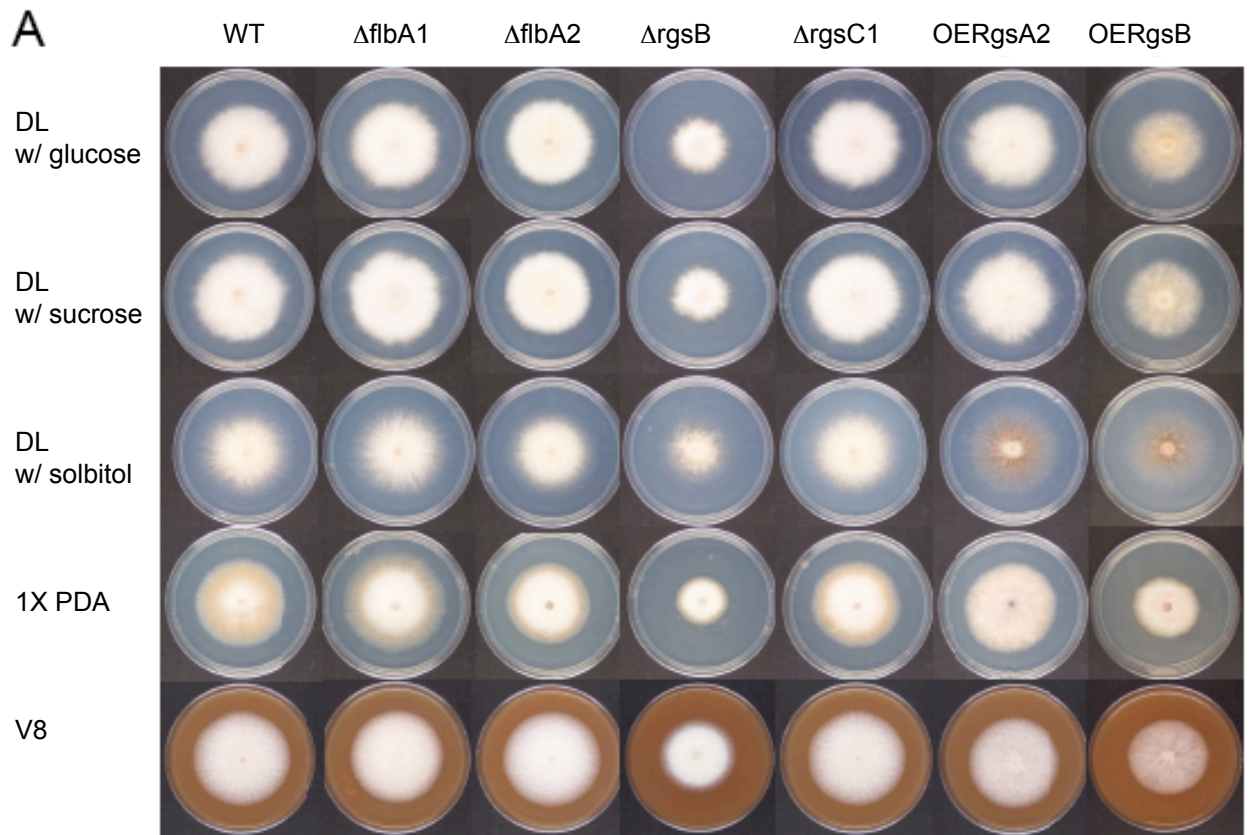
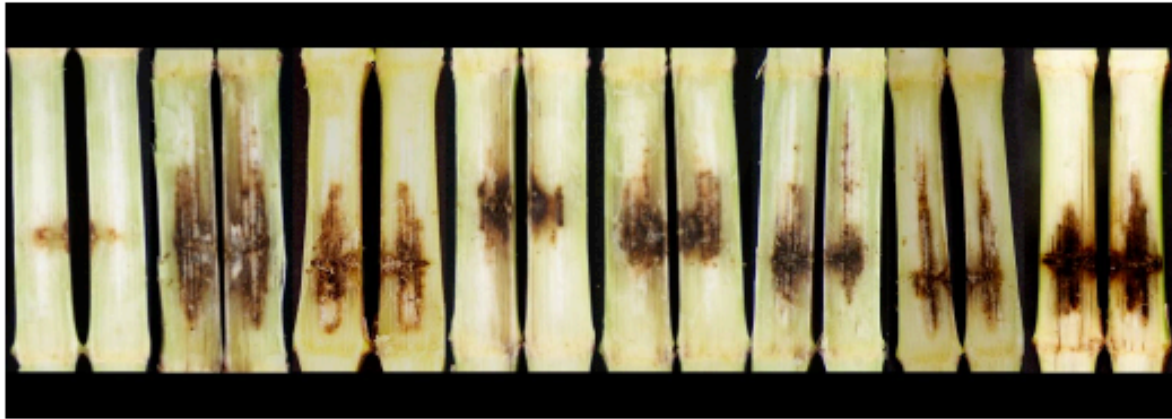


Supplementary Fig. 1. Phylogenetic analyses of *F. verticillioides* RGS proteins (A) and PhLP proteins (B).



Supplementary Fig. 2. *F. verticillioides* wild-type and mutant strains grown in solid agar media (A) to assess hyphal growth rate and in liquid media (B) to study pigmentation.



Water WT  $\Delta flbA1$   $\Delta flbA2$   $\Delta rgsB$   $\Delta rgsC1$  OERgsA2 OERgsB

Supplementary Fig. 3. Maize stalk rot assay with *F. verticillioides* wild-type and mutant strains.