

Supplementary Information

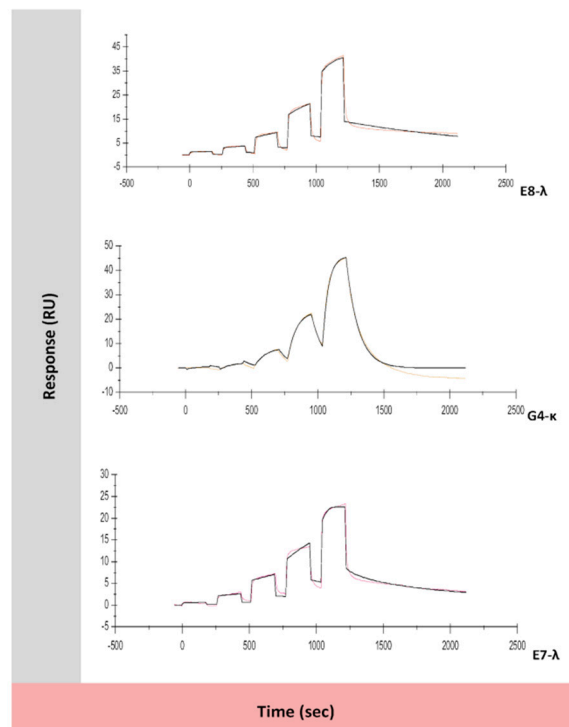


Figure S1. Surface plasmon resonance (SPR) sensorgrams for the kinetic interaction between anti-canine CD117 IgG1s (analyte) and the canine CD117-hFc (ligand). The CM5 sensorchip was prepared with high level immobilisation and single-cycle kinetics was performed at a flow rate of 30 $\mu\text{L}/\text{min}$, allowing a 1:1 binding model to be fit to the data. A 1:1 binding model (Black line) was fitted to the sensorgrams using BiaEvaluation software.