

Supporting Information for

Synthesis of titanium silicalite-1 with high catalytic performance for 1-butene epoxidation by eliminating the extraframework Ti

Ting Zhang^{1,‡}, Yi Zuo^{1,‡}, Min Liu^{1,}, Chunshan Song², and Xinwen Guo^{1,*}*

¹ State Key Laboratory of Fine Chemicals, PSU-DUT Joint Center for Energy Research, School of Chemical Engineering, Dalian University of Technology, 2 Linggong Road, Dalian 116024, P. R. China

² EMS Energy Institute, PSU-DUT Joint Center for Energy Research and Department of Energy & Mineral Engineering, Pennsylvania State University, University Park, PA 16802, USA.

KEYWORDS: TS-1, titanium, starch, coordination state, epoxidation of 1-butene.

Properties and structure of soluble starch

The soluble starch was bought from Aladdin reagent. It can be dissolved in hot water. The pH of starch solution (5 wt%, 25 °C) is 6.0. The structural formula of starch is shown in Fig. S1.

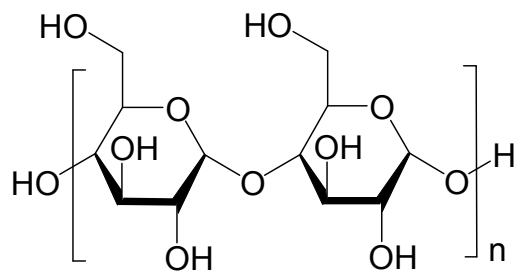


Figure S1. Structure of soluble starch used in this paper.