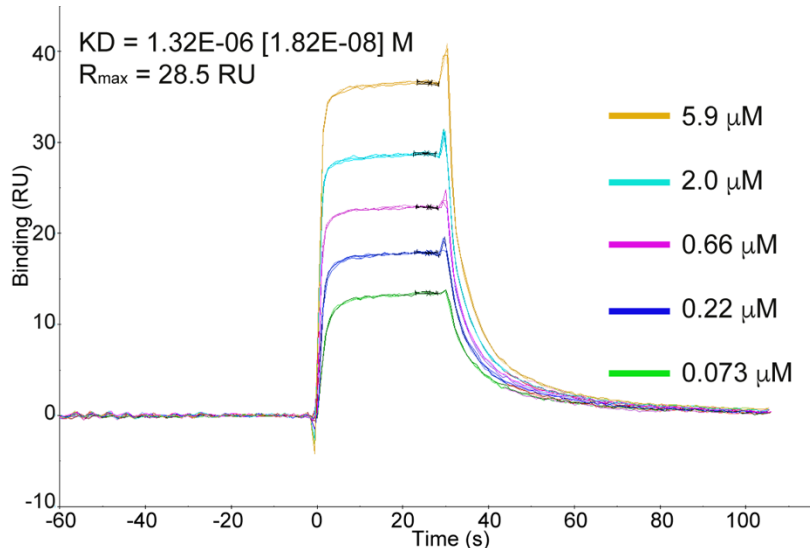


S2 Fig



S2 Fig: Steady-state affinity of rabbit IgG to rabbit Fc γ RIIIA using SA sensor chip. Rabbit Fc γ RIIIA was injected over the surface for 30 s at concentrations listed on the right-hand side of the sensorgrams and allowed to dissociate for 60 s. Curves shown are double-referenced from buffer injections and a reference surface. Report points used for steady-state affinity analysis are indicated with black x's on curves and the average of three K_D measurements is shown in the left-top corner with standard deviation in square brackets.