

# Hierarchically structured porous spinels, via an epoxide-mediated sol-gel process, accompanied by polymerization-induced phase separation

Jan Herwig<sup>†</sup>, Juliane Titus<sup>‡</sup>, Jens Kullmann<sup>‡</sup>, Nicole Wilde<sup>‡</sup>, Thomas Hahn<sup>†</sup>, Roger Gläser<sup>‡</sup>, Dirk Enke<sup>‡,\*</sup>

<sup>†</sup>Institute of Chemistry, Martin-Luther-University Halle-Wittenberg, Von-Danckelmann-Platz 4, 06120 Halle (S.), Germany

<sup>‡</sup>Institute of Chemical Technology, University of Leipzig, Linnéstraße 3, 04103 Leipzig, Germany

---

For Table of Contents Only:

ICP-OES-results, SEM-EDX images

---

**Table S1. Sample composition of the Ni-Al system (from ICP-OES).**

Sample	Concentration <sup>a,b</sup>		Ni content <sup>c</sup>	
	Al / wt.-%	Ni / wt.-%	measured / mol-%	calculated <sup>d</sup> / mol-%
3Ni	49.7	3.5	3.1	3.3
22Ni	34.0	18.9	20.3	22.0
33Ni	26.6	28.2	32.8	33.0

<sup>a</sup> based on total sample mass

<sup>b</sup> corrected values after ICP-analysis

<sup>c</sup> based on total metal amount (Al+Ni)

<sup>d</sup> calculated from initial metal weight (Al+Ni)

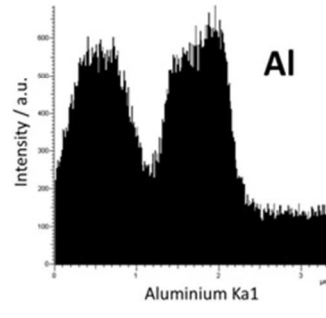
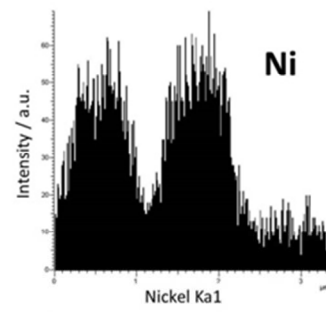
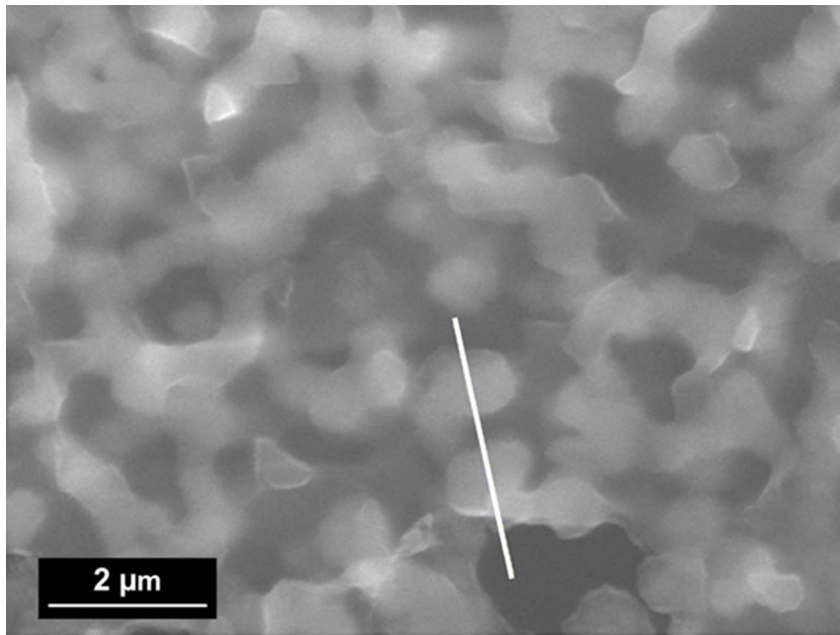


Figure S1. SEM-EDX image of 22Ni-2 with EDX linescan.

**Table S2. Sample composition of the Co-Al system (from ICP-OES).**

Sample	Concentration <sup>a,b</sup>		Co content <sup>c</sup>	
	Al / wt.-%	Co / wt.-%	measured / mol-%	calculated <sup>d</sup> / mol-%
3Co	48.2	3.7	3.4	3.3
22Co	46.5	19.6	22.6	22.1
33Co	30.0	31.4	32.4	33.0

<sup>a</sup> based on total sample mass

<sup>b</sup> corrected values after ICP-analysis

<sup>c</sup> based on total metal amount (Al + Co)

<sup>d</sup> calculated from initial metal weight (Al + Co)

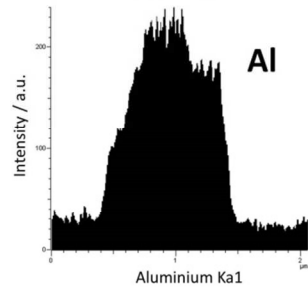
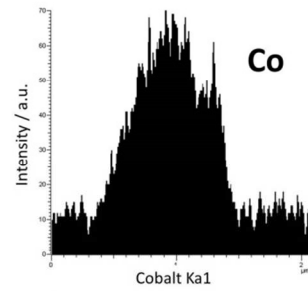
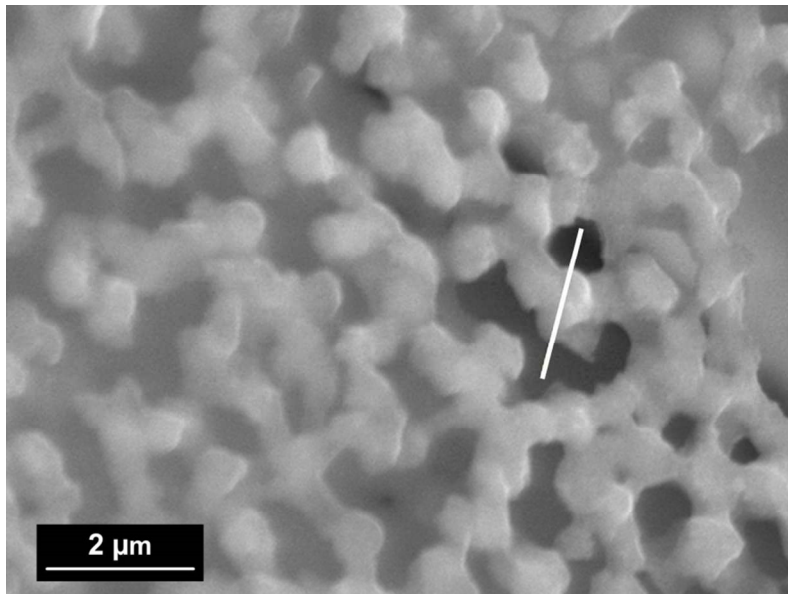


Figure S2. SEM-EDX image of 22Co-2 with EDX-linescan.