

## Effects of L-DOPA Monotherapy on Psychomotor Speed and [<sup>11</sup>C]Raclopride Binding in High Risk Depressed Older Adults

### *Supplemental Information*

Table S1. Practice effects on processing and gait speed outcome measures between screening visit and Week 0.

	Mean change ± SE Screening to Week 0	Mean change 95% CI Screening to Week 0	ES±SE	ES 95% CI	P-value
Digit symbol	5.33±0.97	3.43,7.23	0.55±0.1	0.35,0.75	<.0001
Pattern comparison	0.67±0.61	-0.52,1.86	0.12±0.11	-0.1,0.34	0.2723
Letter comparison	0.64±0.5	-0.34,1.61	0.13±0.11	-0.07,0.34	0.1987
Processing factor	1.96±0.61	0.77,3.15	0.28±0.09	0.11,0.45	0.0012
Single task gait speed	0.08±0.02	0.03,0.13	0.46±0.14	0.18,0.73	0.001
Dual task gait speed fluency	0.04±0.02	0,0.09	0.19±0.11	-0.01,0.4	0.0645

ES = effect size, SE = standard error, CI = confidence interval.

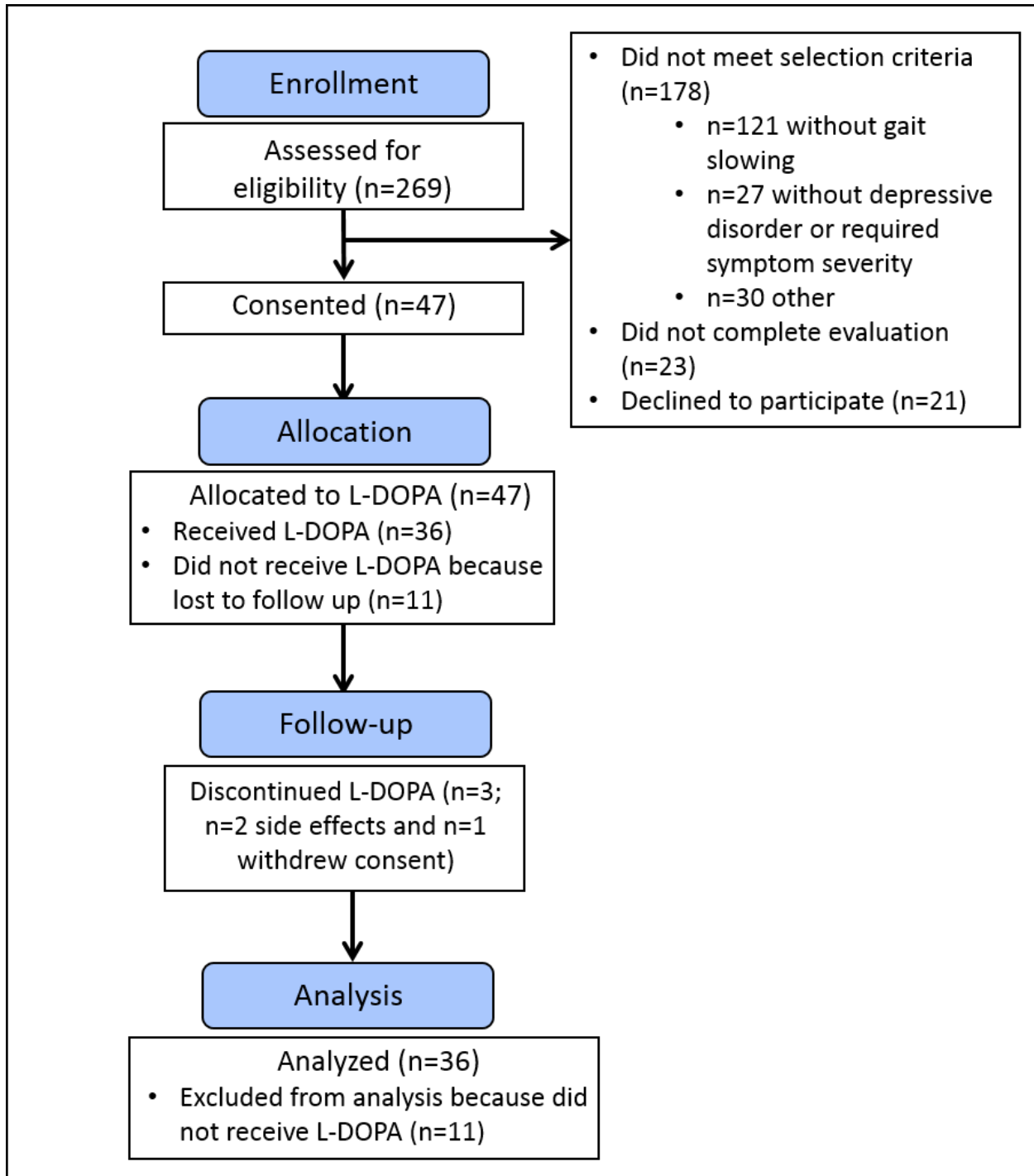


Figure S1. CONSORT flow diagram.

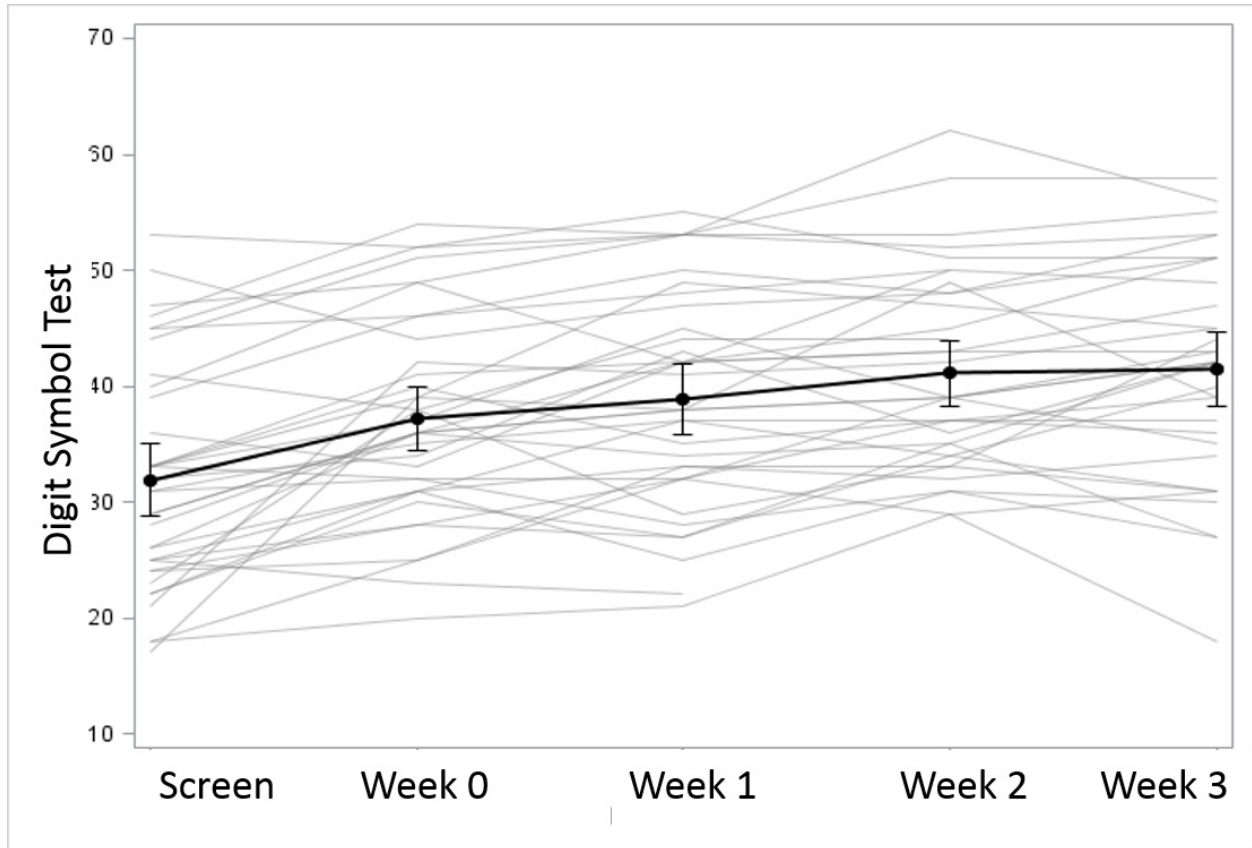


Figure S2. Mean estimates with 95% confidence intervals and spaghetti plots for Digit Symbol measure. Values on Digit Symbol increased by study week from Screen ( $31.9 \pm 9.7$ ) to Week 0 ( $37.2 \pm 8.7$ ), Week 1 ( $38.9 \pm 9.4$ ), Week 2 ( $41.1 \pm 8.5$ ), and Week 3 ( $41.4 \pm 9.6$ ).

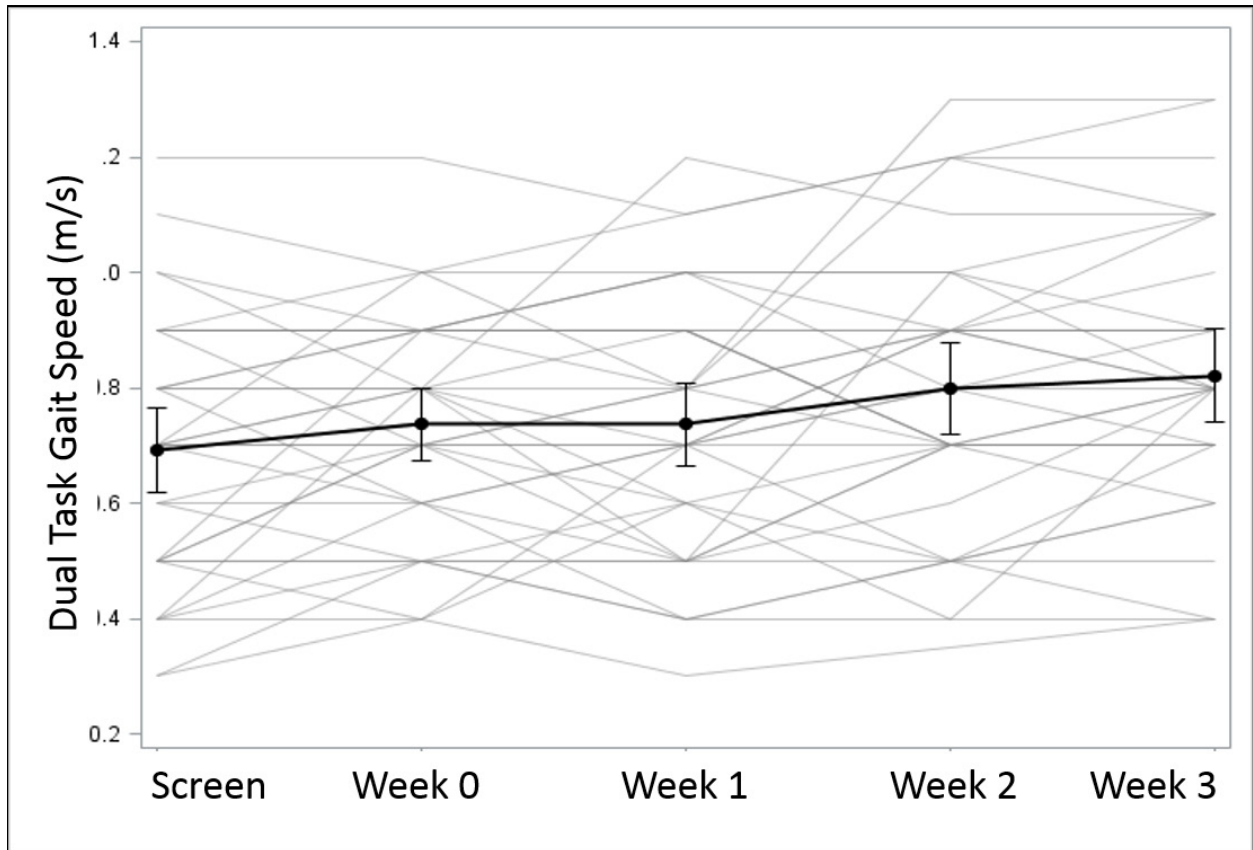


Figure S3. Mean estimates with 95% confidence intervals and spaghetti plots for dual task gait speed measure. Dual task gait speed values increased by study week from Screen ( $0.69 \pm 0.23$ ) to Week 0 ( $0.74 \pm 0.20$ ), Week 1 ( $0.74 \pm 0.23$ ), Week 2 ( $0.80 \pm 0.24$ ), and Week 3 ( $0.82 \pm 0.24$ ).