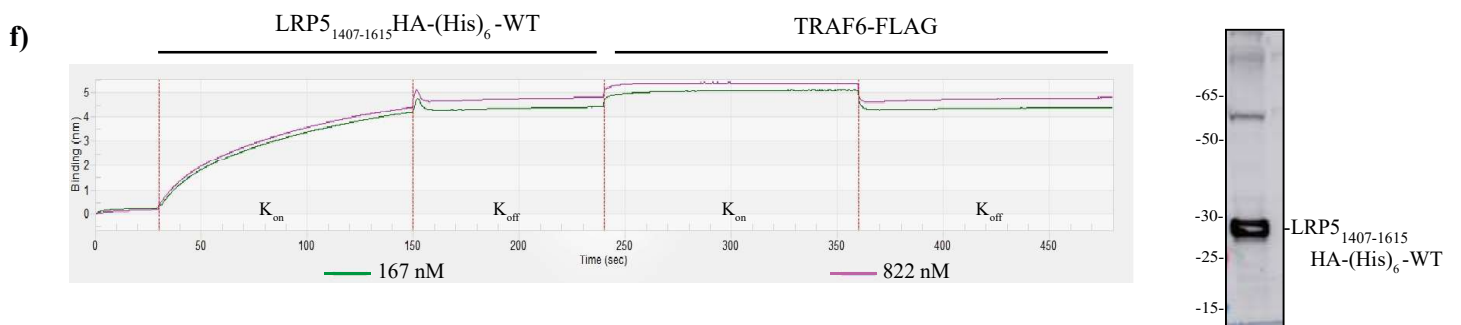
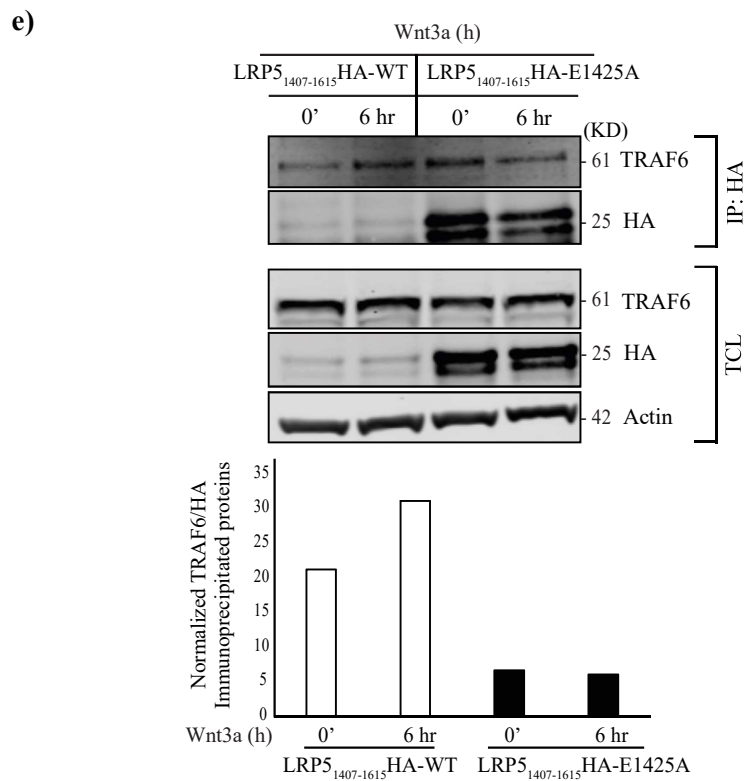
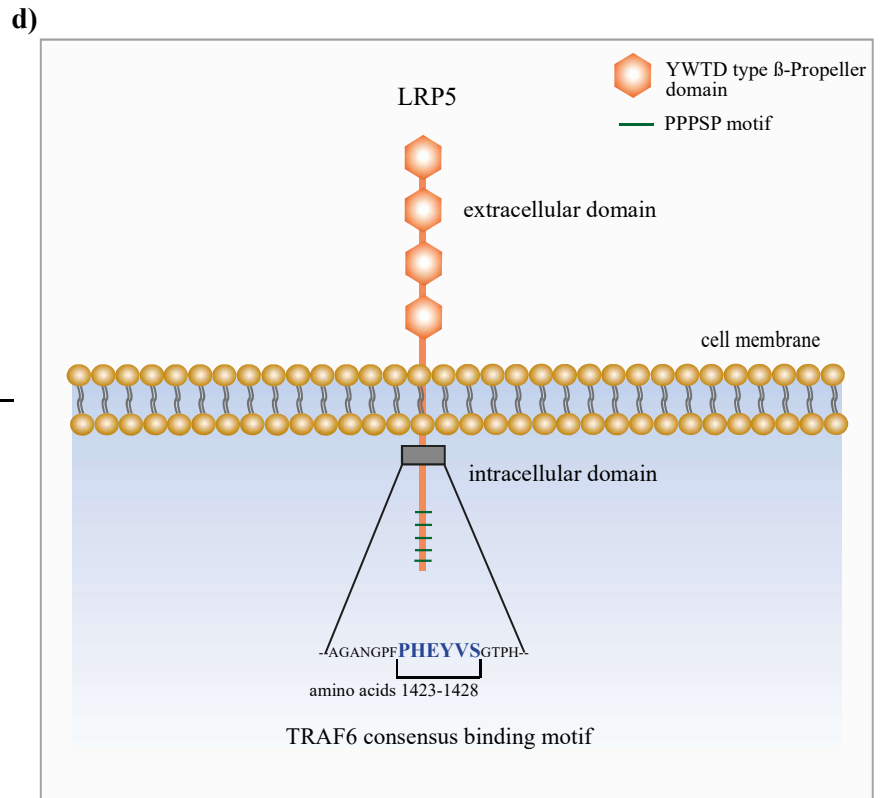
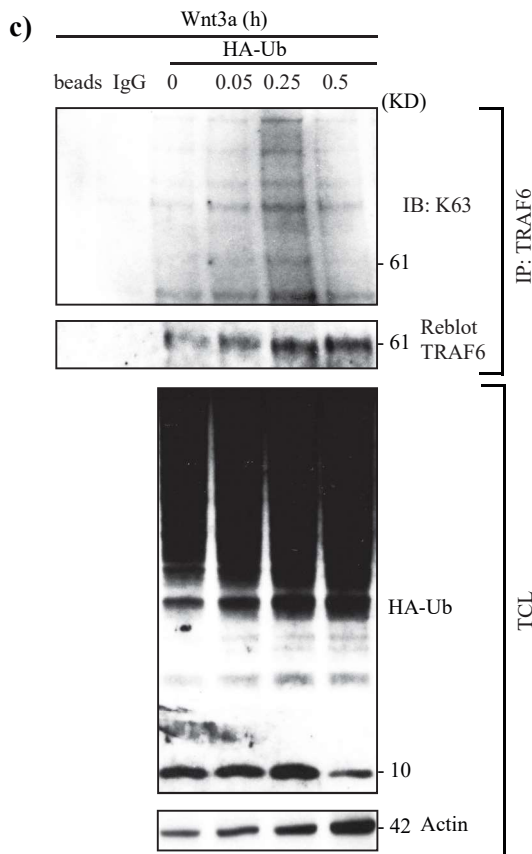
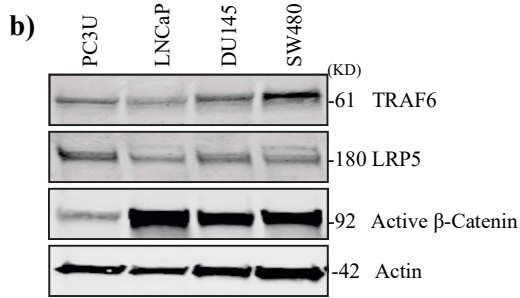
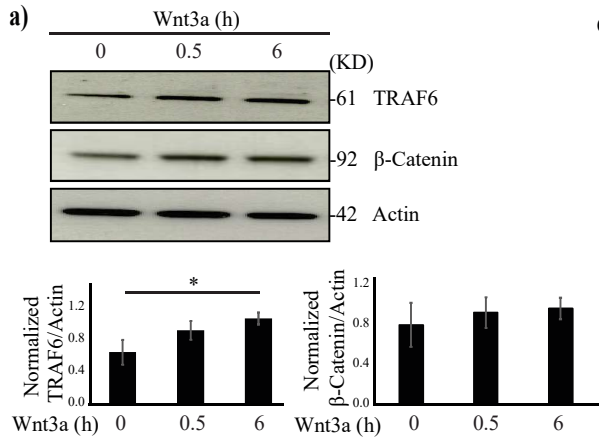
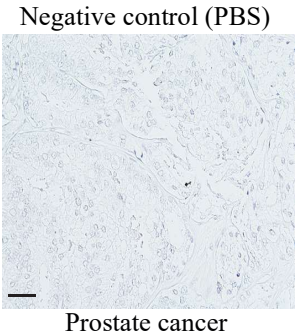


Supplementary Figure 1

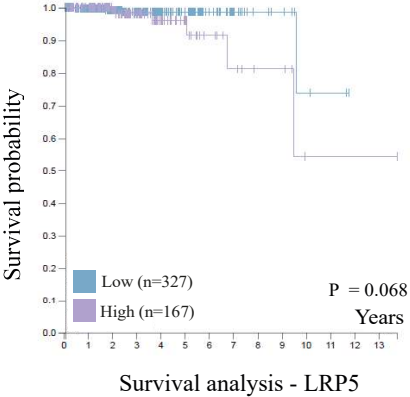


Supplementary Figure 2

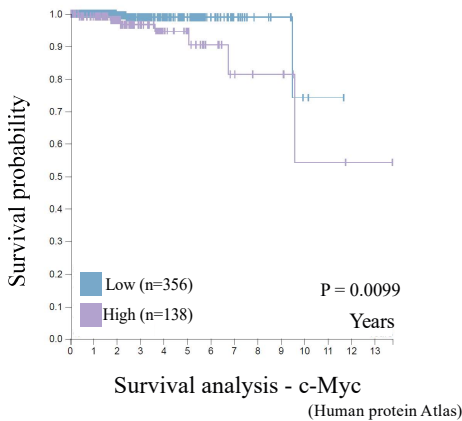
a)



b)

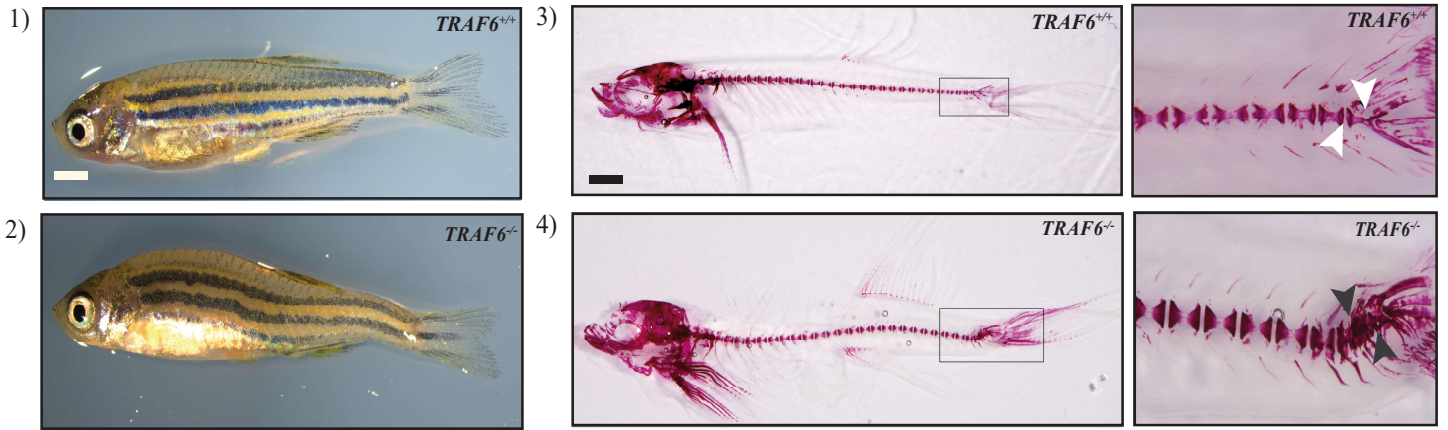


c)

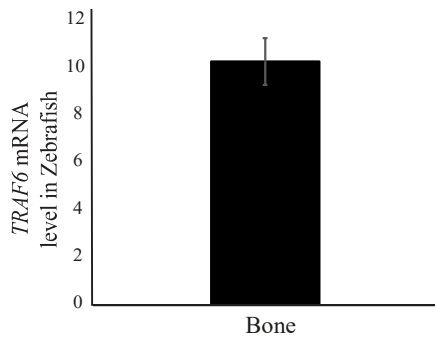


Supplementary Figure 3

a)



(b)



Supplementary figure 4

List of Primers

Primers for Human prostate cancer cell line (PC3U) mRNA qRT-PCR analysis

| gene | Forward Primers | Reverse Primer |
|------------------|------------------------|------------------------|
| TRAF6 | GTTGCTGAAATCGAAGCACA | CGGGTTTGCCAGTGTAGAAT |
| β -Catenin | CCAATAGGGGCACAAAACGT | CCTCTTCCCCATCTCTGTCA |
| LRP5 | ACGTCAGCCTGAAGACCATC | GCGCCACTTCGATTCTGTTG |
| c-Myc | CTTCTCTGAAAGGCTCTCCTTG | GTCGAGGTCATAGTTCCTGTTG |
| GAPDH | CTCTGGTAAAGTGGATATTGT | GGTGGAATCATATTGGAACA |

Primers for zebrafish mRNA qRT-PCR analysis

| gene | Forward Primers | Reverse Primer |
|------------------------------------|----------------------|-------------------------|
| <i>β-Catenin1</i> | CCATTGGCAGCAACAGTCTT | GAAGGACTGGTTGAAGCCCT |
| <i>β-Catenin2</i> | CCATGGAGCAGGACCGTAA | CCTGCTCCCACTCGTACAG |
| <i>LRP5</i> | AGTAGGACGAGCAAACGGAC | GATCTCTCGCTGTAGACTTTGC |
| <i>Cyclin D1</i> | TTGTTTTGCTGCGAAGTGGA | TCGCGACGATTTTCCTCATT |
| <i>CBX8a</i> | GAATATTCTGGATGAGCGTC | GCTTTTGCCTTCATTAGAAAC |
| <i>CBX8b</i> | CCACAGGACTAATCCACAAT | TGAATAGTGCTTCAGGTGTT |
| <i>MSXd</i> | AGTTTGGTCAGAGGAGAAAT | CTTGTGGAGTCTTGAGAGAA |
| <i>β-Actin</i> | CGAGCTGTCTTCCCATCCA | TCACCAACGTAGCTGTCTTTCTG |