

Supporting Information

Optimizing the Performance of Supported Lipid Bilayers as Cell Culture Platforms based on Extracellular Matrix Functionalization

Setareh Vafaei^{†,‡}, Seyed R. Tabaei^{†,‡} and Nam-Joon Cho^{*,†,‡,§}

[†]School of Materials Science and Engineering, Nanyang Technological University, 50 Nanyang Avenue 639798, Singapore

[‡]Centre for Biomimetic Sensor Science, Nanyang Technological University, 50 Nanyang Drive 637553, Singapore

[§]School of Chemical and Biomedical Engineering, Nanyang Technological University, 62 Nanyang Drive 637459, Singapore

E-mail: njcho@ntu.edu.sg

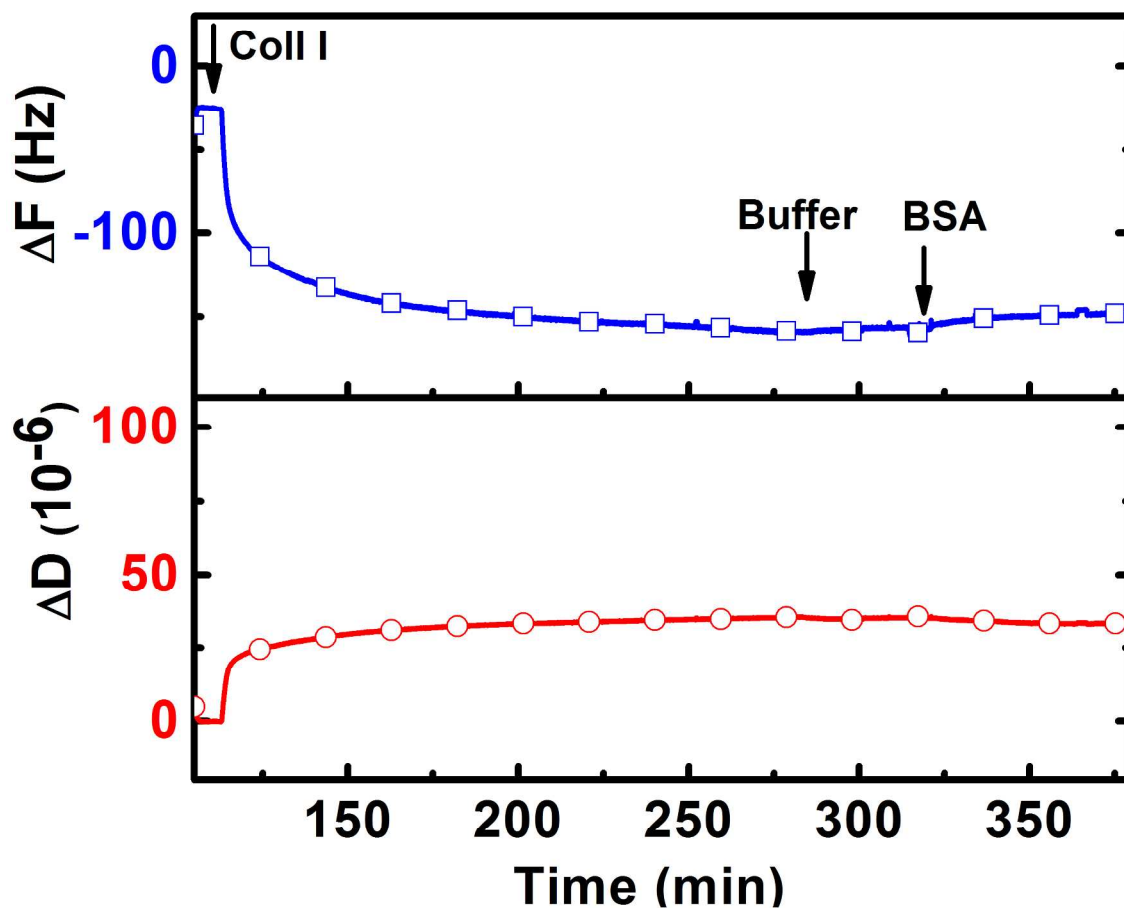


Figure S1. QCM-D curves of frequency and dissipation shifts upon addition of BSA (0.1 mg/ml) to Col I-functionalized SLB.

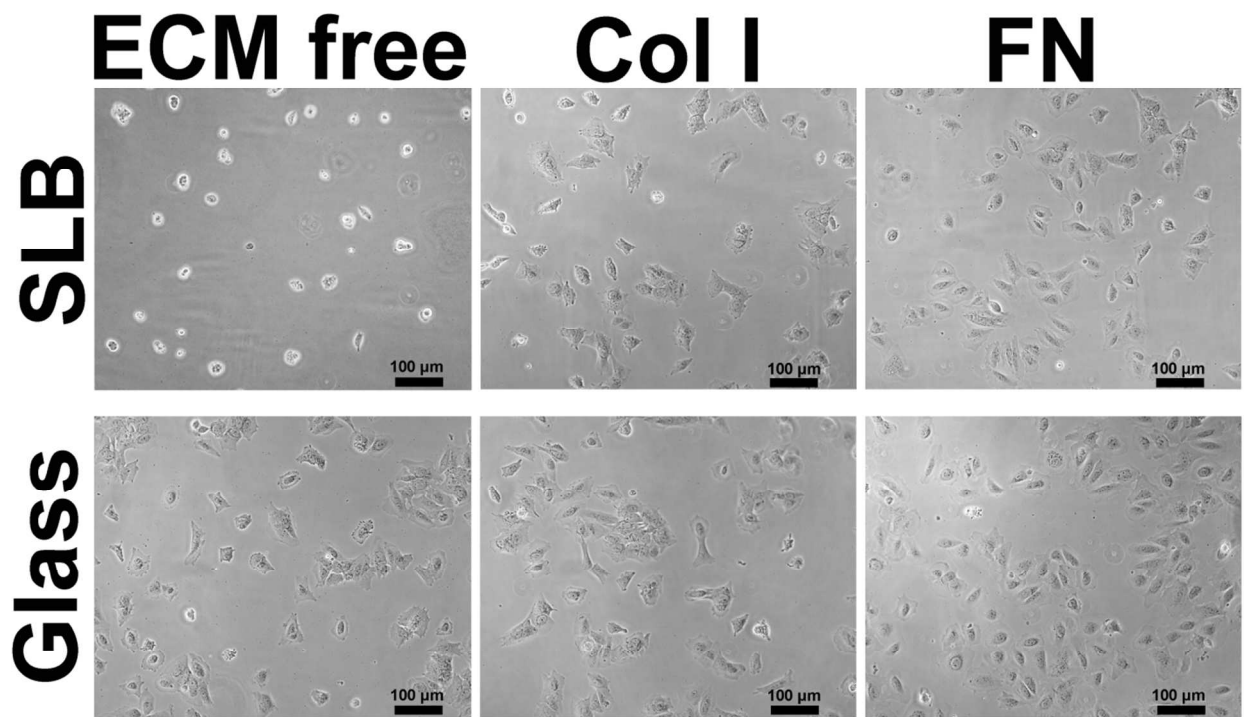


Figure S2. Bright field images of cells grown on different platforms after 24 hr. The images were used for quantification of cell surface area using ImageJ software. All scale bars are 100 μm.