

## Supporting Information

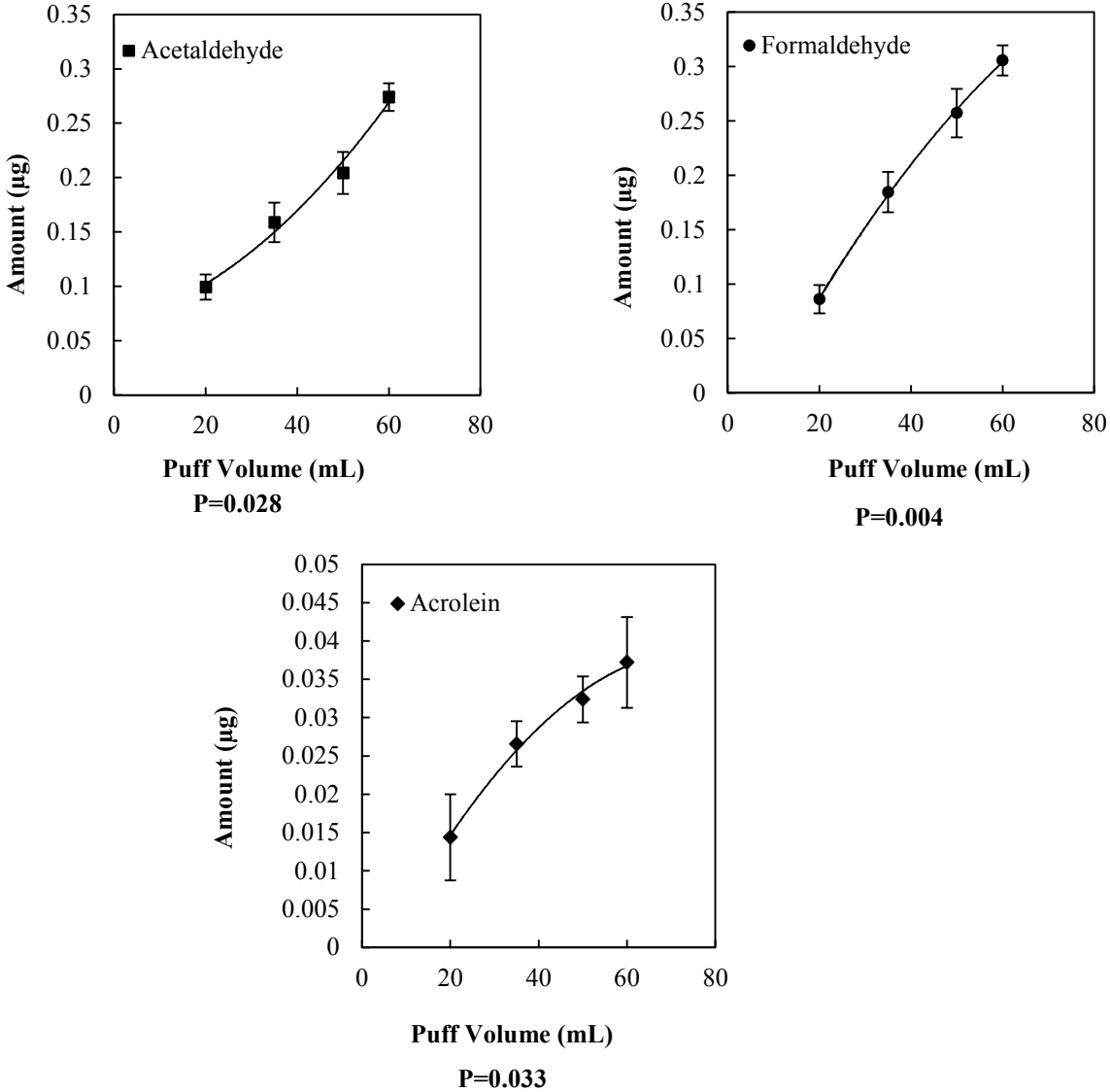
### **Aldehyde detection in electronic cigarette aerosols**

Mumiye A. Ogunwale<sup>†</sup>; Mingxiao Li<sup>‡</sup>; Mandapati V. Ramakrishnam Raju<sup>†</sup>;  
Michael H. Nantz<sup>†</sup>; Daniel J. Conklin<sup>§</sup>; Xiao-An Fu<sup>‡\*</sup>

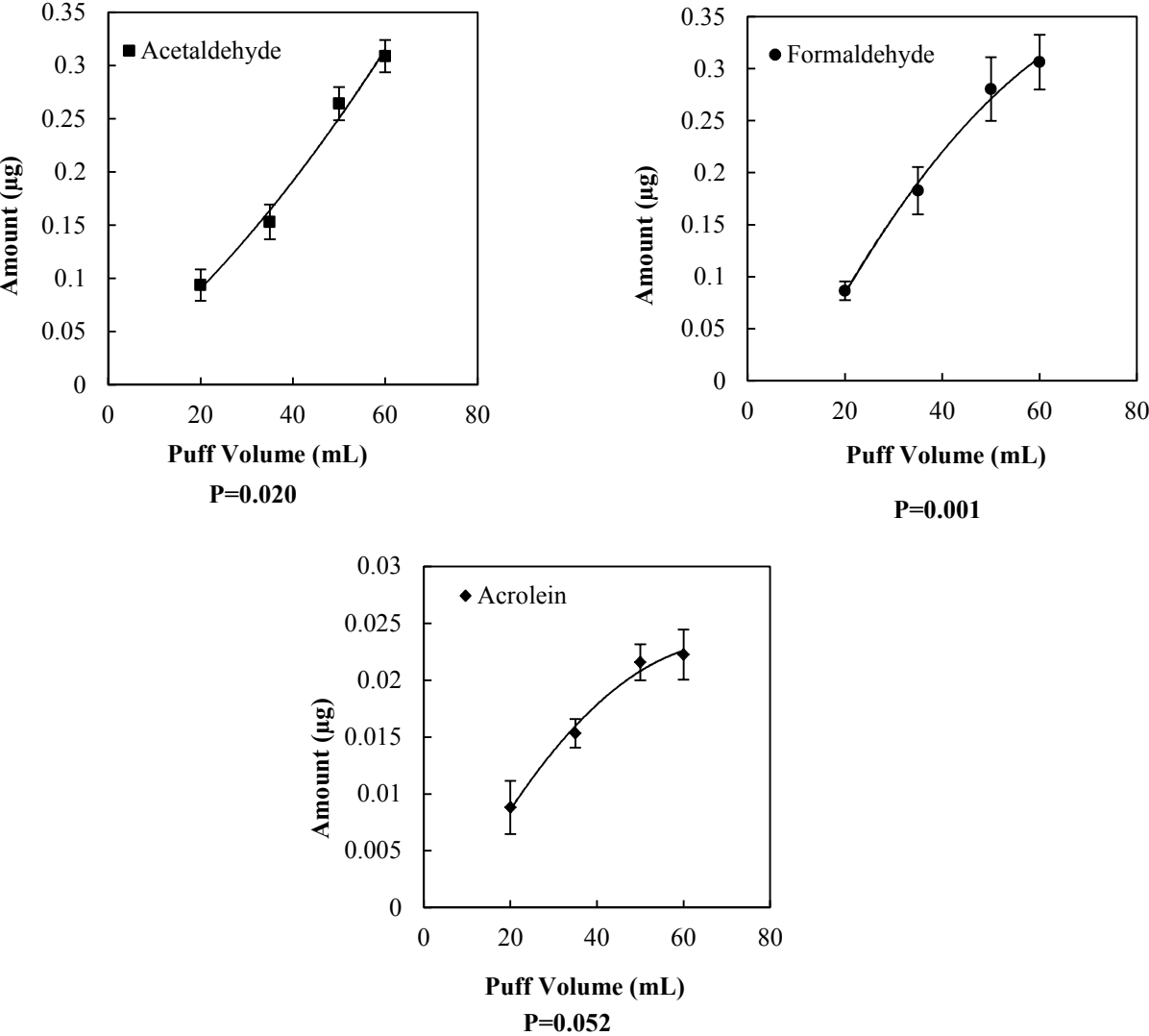
<sup>†</sup>Department of Chemistry, <sup>‡</sup>Department of Chemical Engineering, <sup>§</sup>Diabetes and Obesity Center,  
and American Heart Association – Tobacco Regulation and Addiction Center,  
University of Louisville, Louisville, KY 40292

\*Corresponding author: [Xiaoan.fu@louisville.edu](mailto:Xiaoan.fu@louisville.edu)

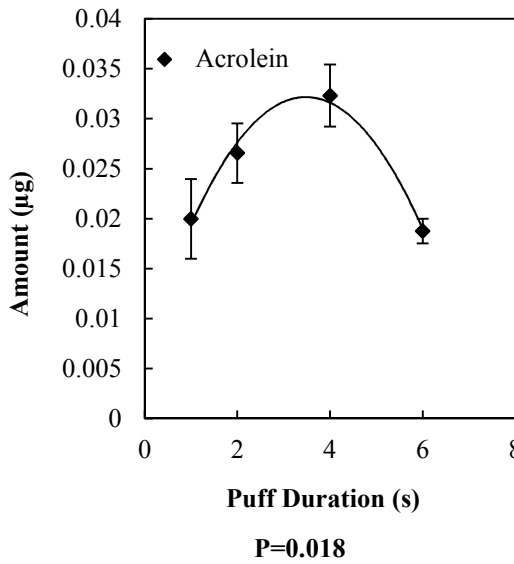
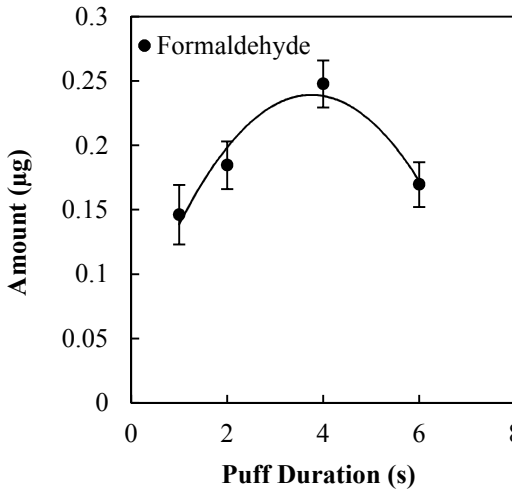
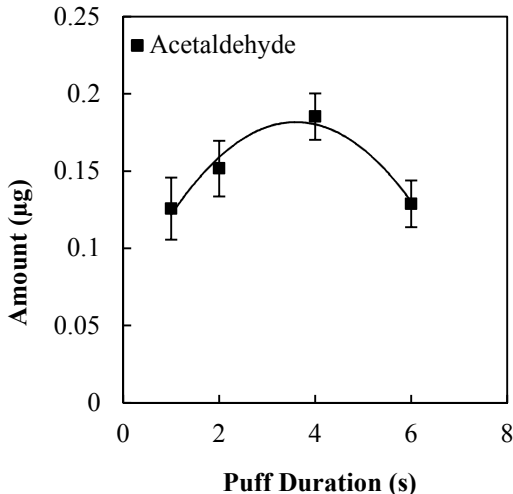
**Figure S1.** The effect of puff volume on the amount of acetaldehyde, formaldehyde and acrolein generated in vapors of Blu e-cigarette with a Magnificent Menthol cartridge with 16 mg of nicotine at a fixed puff duration of 2s and puff frequency 1/30s for 10 puffs. P values for the amounts aldehydes with the puff volume from 20 mL/puff to 60 mL/puff.



**Figure S2.** The effect of puff volume on the amount of acetaldehyde, formaldehyde and acrolein generated in vapors of Blu e-cigarette with a Classic Tobacco cartridge with 16 mg of nicotine at a fixed puff duration of 2s and puff frequency 1/30s for 10 puffs. P values for the amounts aldehydes with the puff volume from 20 mL/puff to 60 mL/puff.



**Figure S3.** The effect of puff duration on the amount of acetaldehyde, formaldehyde and acrolein generated in vapors of Blu e-cigarette with a Magnificent Menthol cartridge with 16 mg of nicotine at a fixed puff volume of 35 ml and puff frequency 1/30s for 10 puffs. P values for the amounts aldehydes with the puff duration from 1 sec to 4 sec.



**Figure S4.** The effect of puff duration on the amount of acetaldehyde, formaldehyde and acrolein generated in vapors of Blu e-cigarette with a Classic Tobacco cartridge with 16 mg of nicotine at a fixed puff volume of 35 ml and puff frequency 1/30s for 10 puffs. P values for the amounts aldehydes with the puff duration from 1 sec to 4 sec.

