

Supporting Information

Stable Platinum(IV) Corroles: Synthesis, Molecular Structure, and Room-Temperature Near-IR Phosphorescence

Abraham B. Alemayehu,^a Laura J. McCormick,^b Kevin J. Gagnon,^b Sergey M. Borisov^c and
Abhik Ghosh^{*,a}

^aDepartment of Chemistry, UiT – The Arctic University of Norway, N-9037 Tromsø, Norway;
Email: abhik.ghosh@uit.no

^bAdvanced Light Source, Lawrence Berkeley National Laboratory,
Berkeley, CA 94720-8229, USA

^cInstitute of Analytical Chemistry and Food Chemistry, NAWI Graz, Graz University of
Technology, Stremayrgasse 9, 8010 Graz, Austria

Electrospray ionization mass spectra

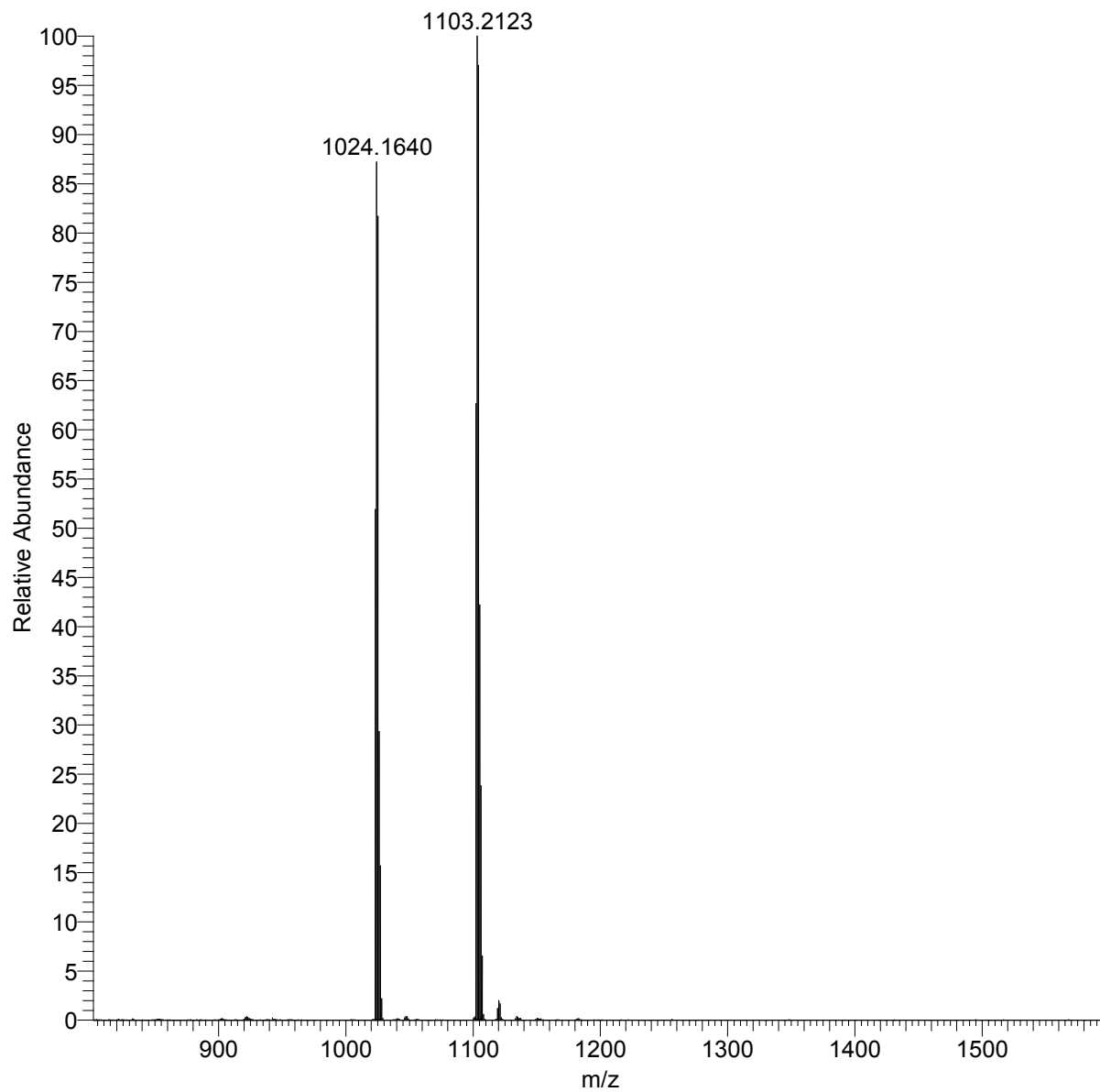


Figure S1. Positive-mode ESI MS of Pt[TpCF₃PC](*m*-C₆H₄CN)(py).

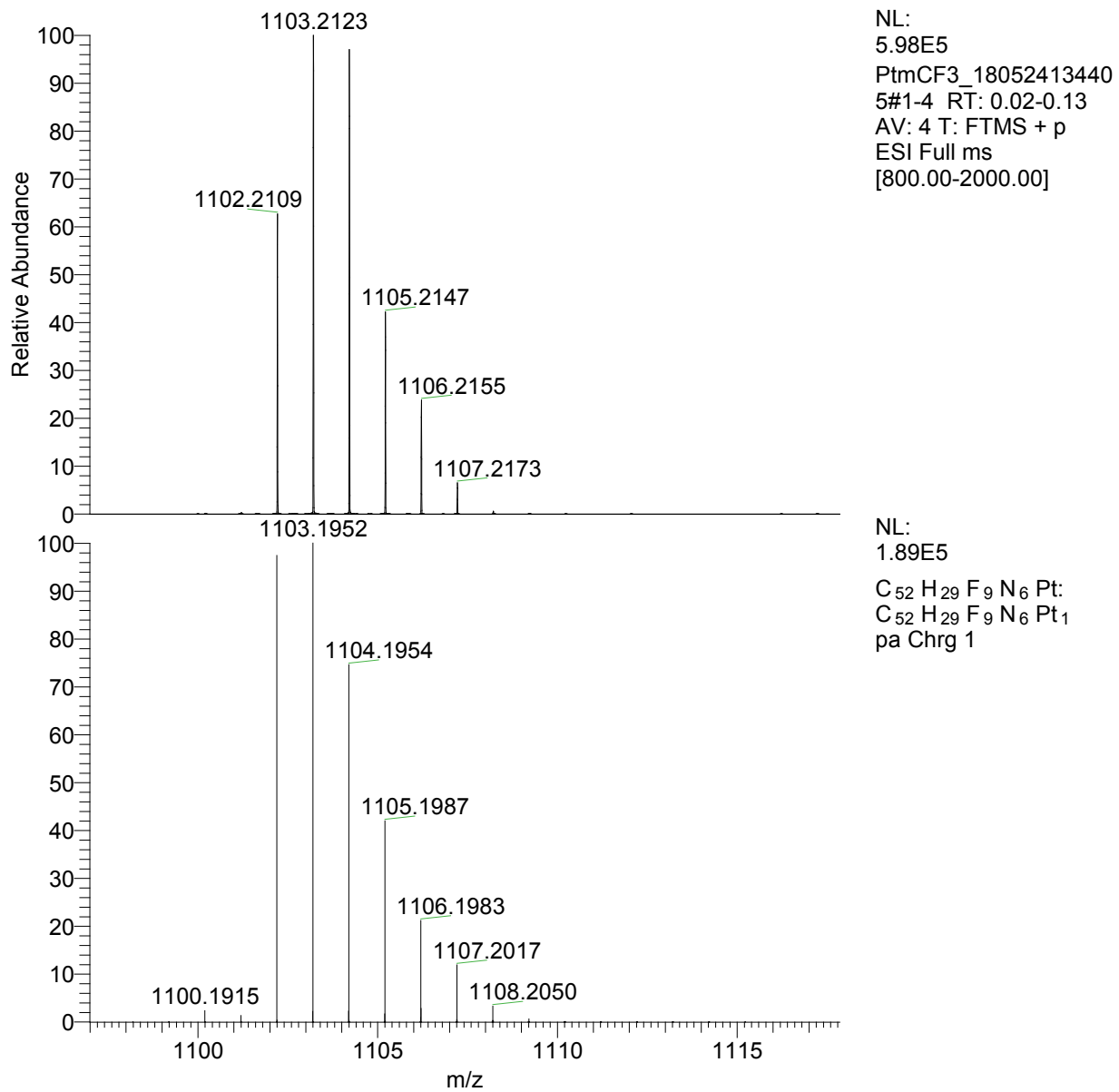


Figure S2. Close-up of positive-mode ESI MS of $\text{Pt}[\text{TpCF}_3\text{PC}](m\text{-C}_6\text{H}_4\text{CN})(\text{py})$: experimental (above) and simulation (below).

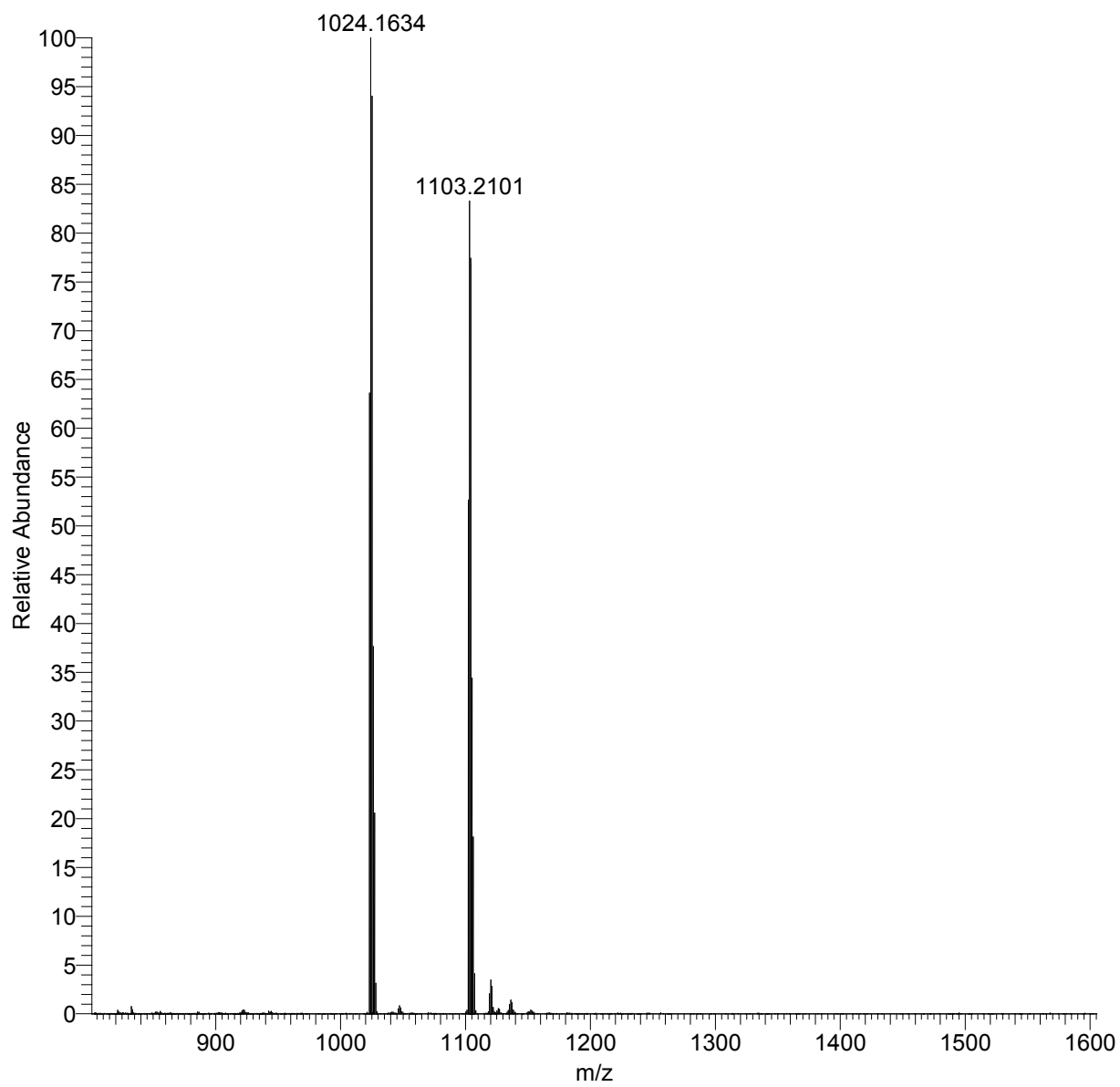


Figure S3. Positive-mode ESI MS of Pt[*Tp*CF₃PC](*p*-C₆H₄CN)(py).

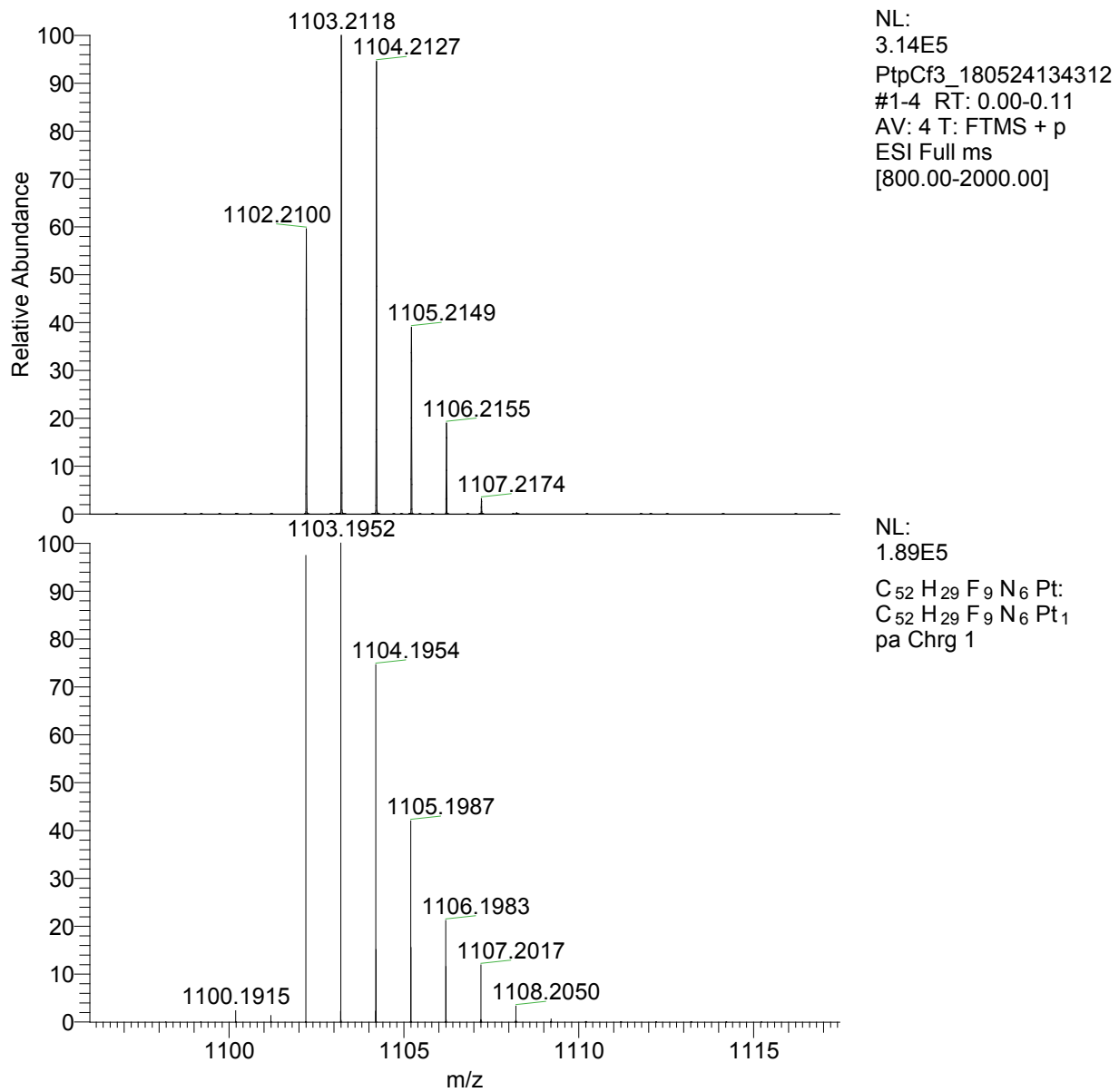


Figure S4. Close-up of positive-mode ESI MS of Pt[*Tp*CF₃PC](*p*-C₆H₄CN)(py): experimental (above) and simulation (below).

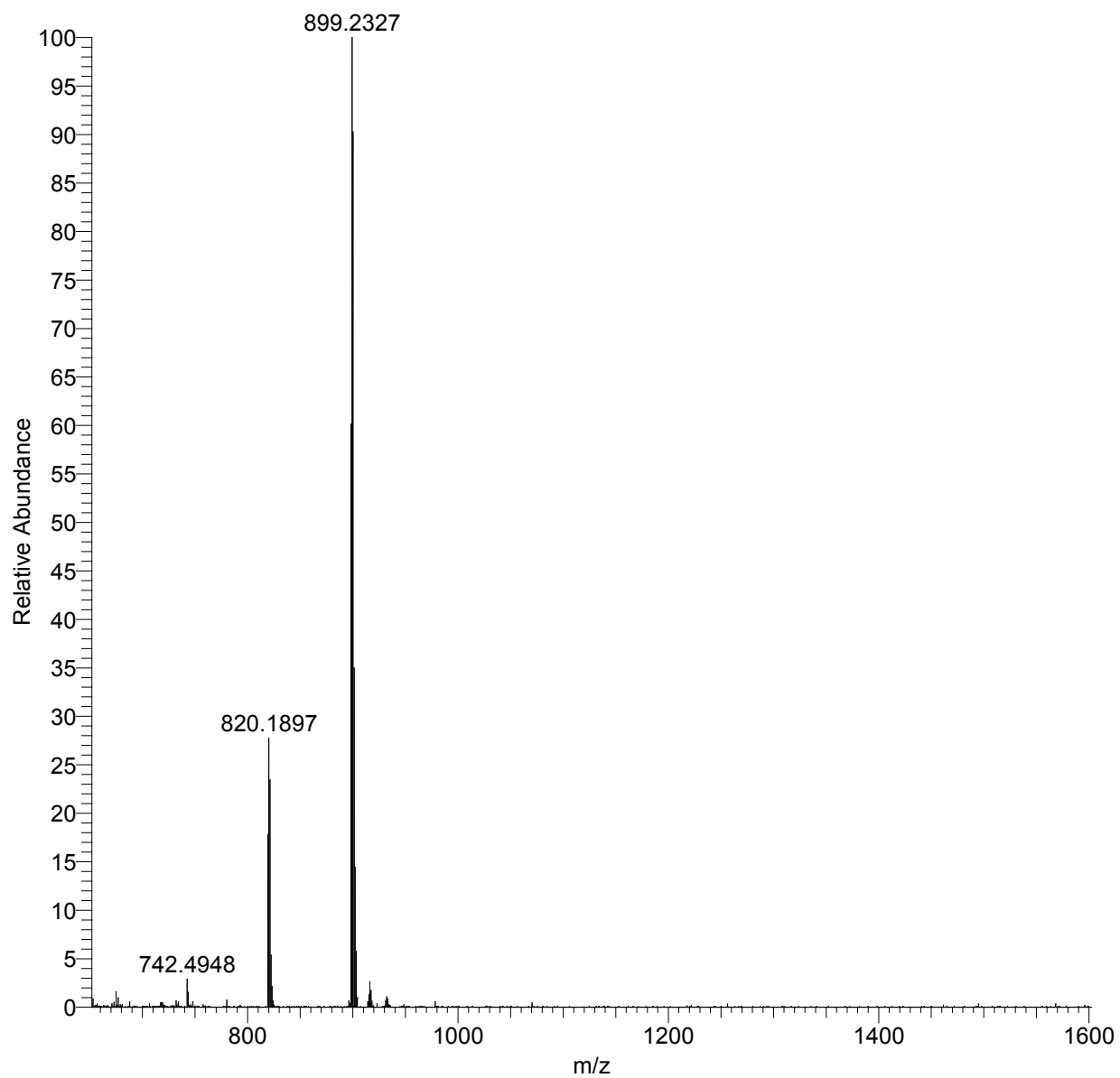


Figure S5. Positive-mode ESI MS of Pt[TPC](*m*-C₆H₄CN)(py).

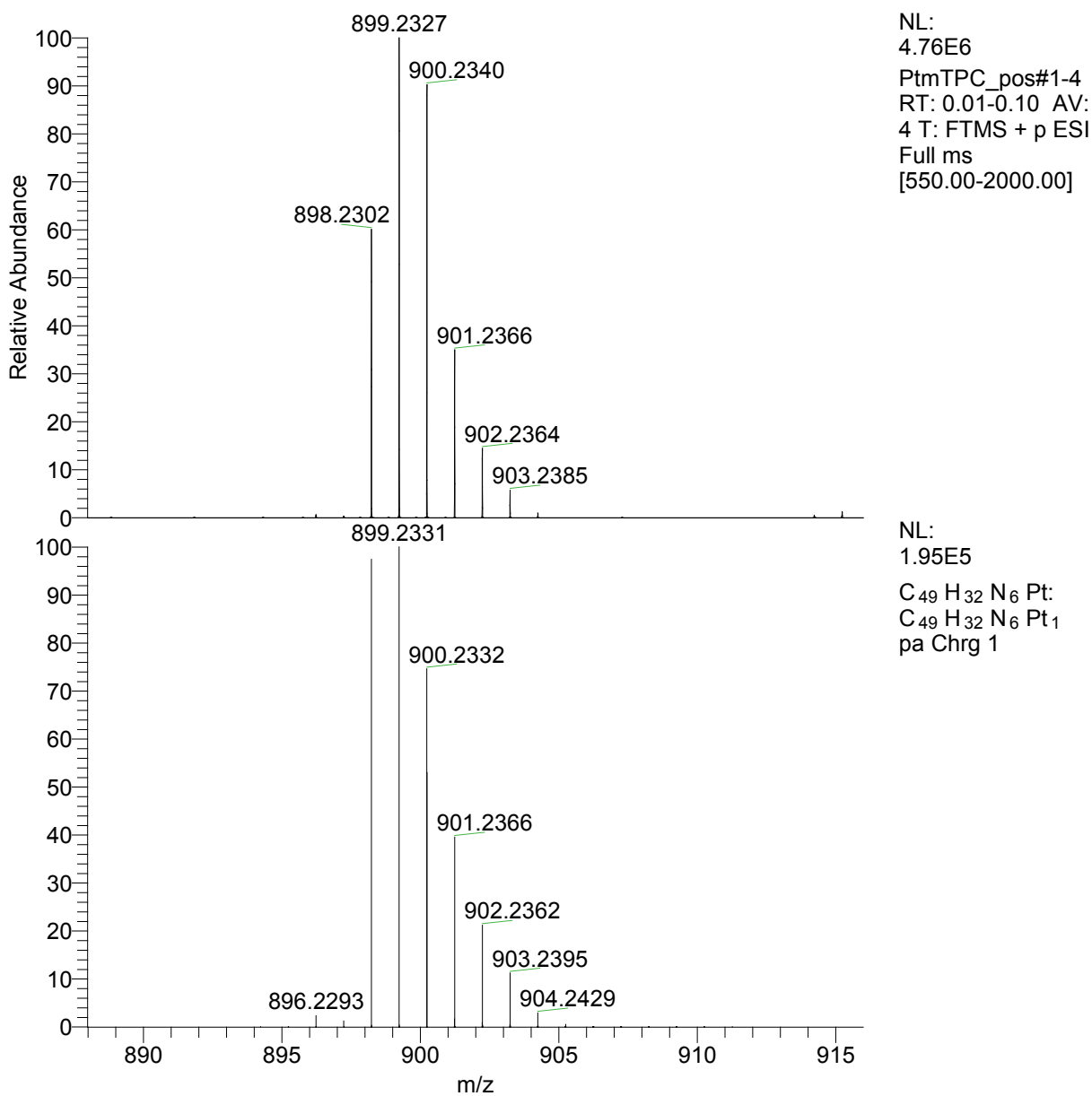


Figure S6. Close-up of positive-mode ESI MS of Pt[TPC](*m*-C₆H₄CN)(py): experimental (above) and simulation (below).

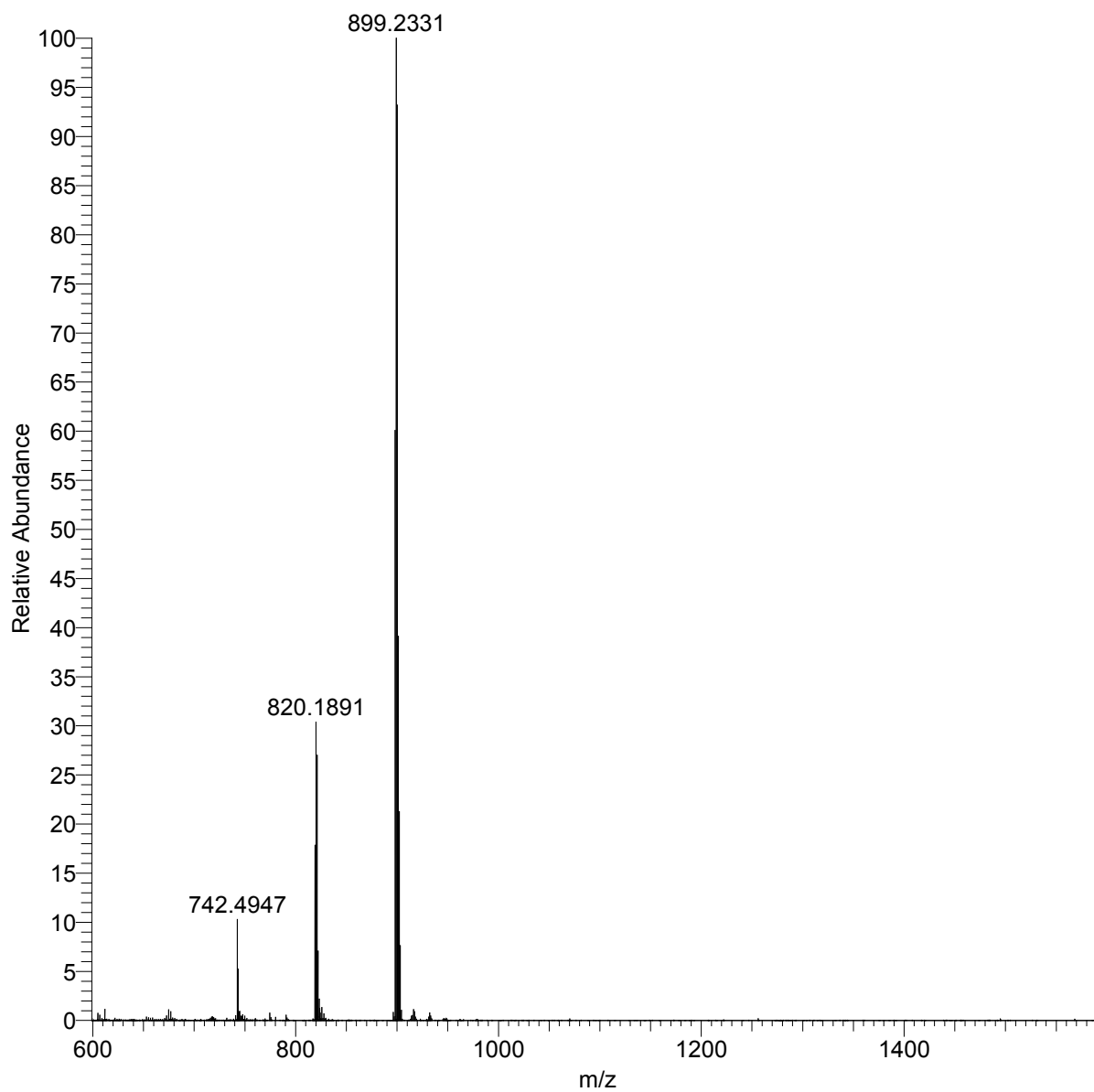


Figure S7. Positive-mode ESI MS of Pt[TPC](*p*-C₆H₄CN)(py).

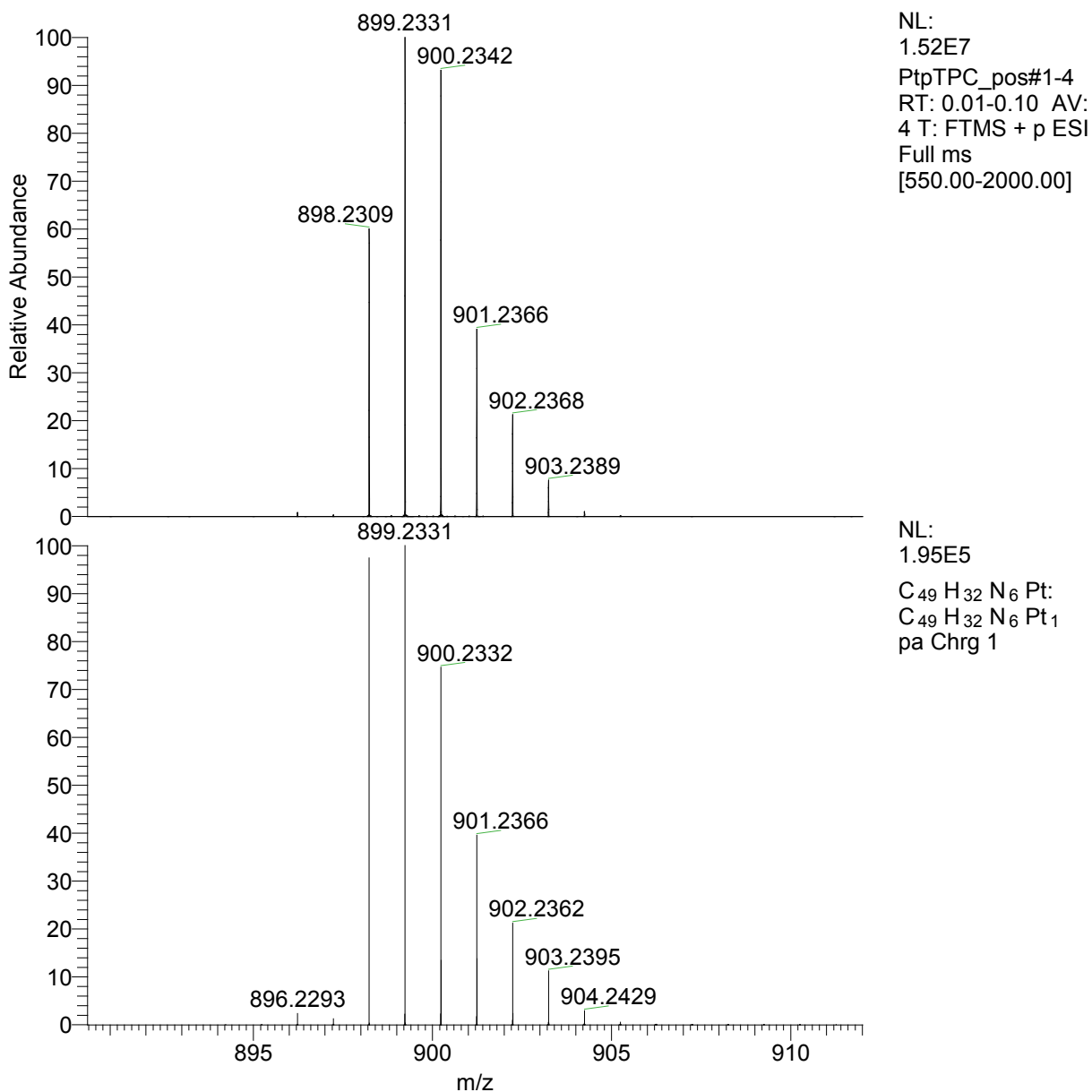


Figure S8. Close-up of positive-mode ESI MS of Pt[TPC](*p*-C₆H₄CN)(py): experimental (above) and simulation (below).

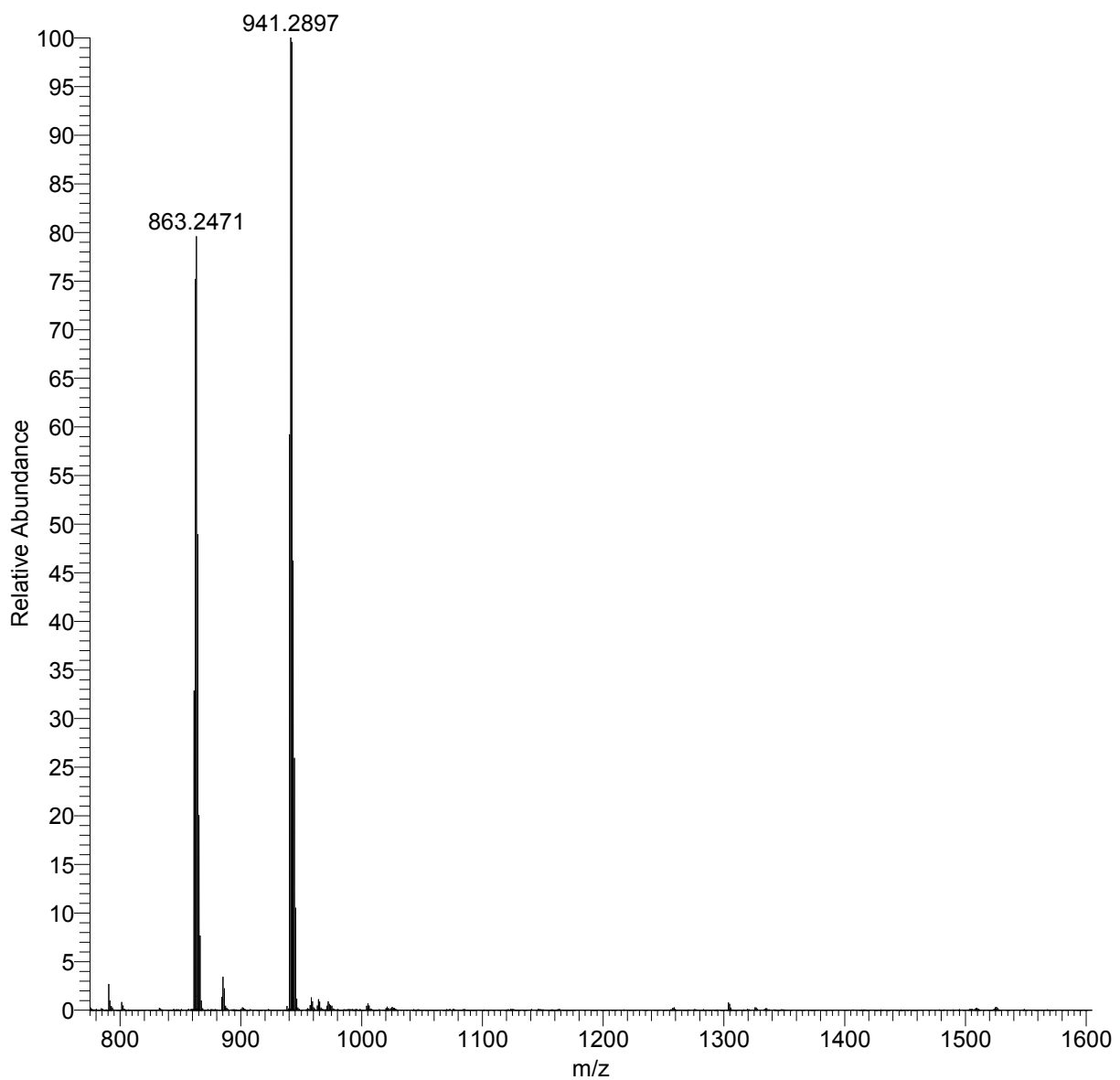


Figure S9. Positive-mode ESI MS of Pt[TpCH₃PC](*m*-C₆H₄CN)(py).

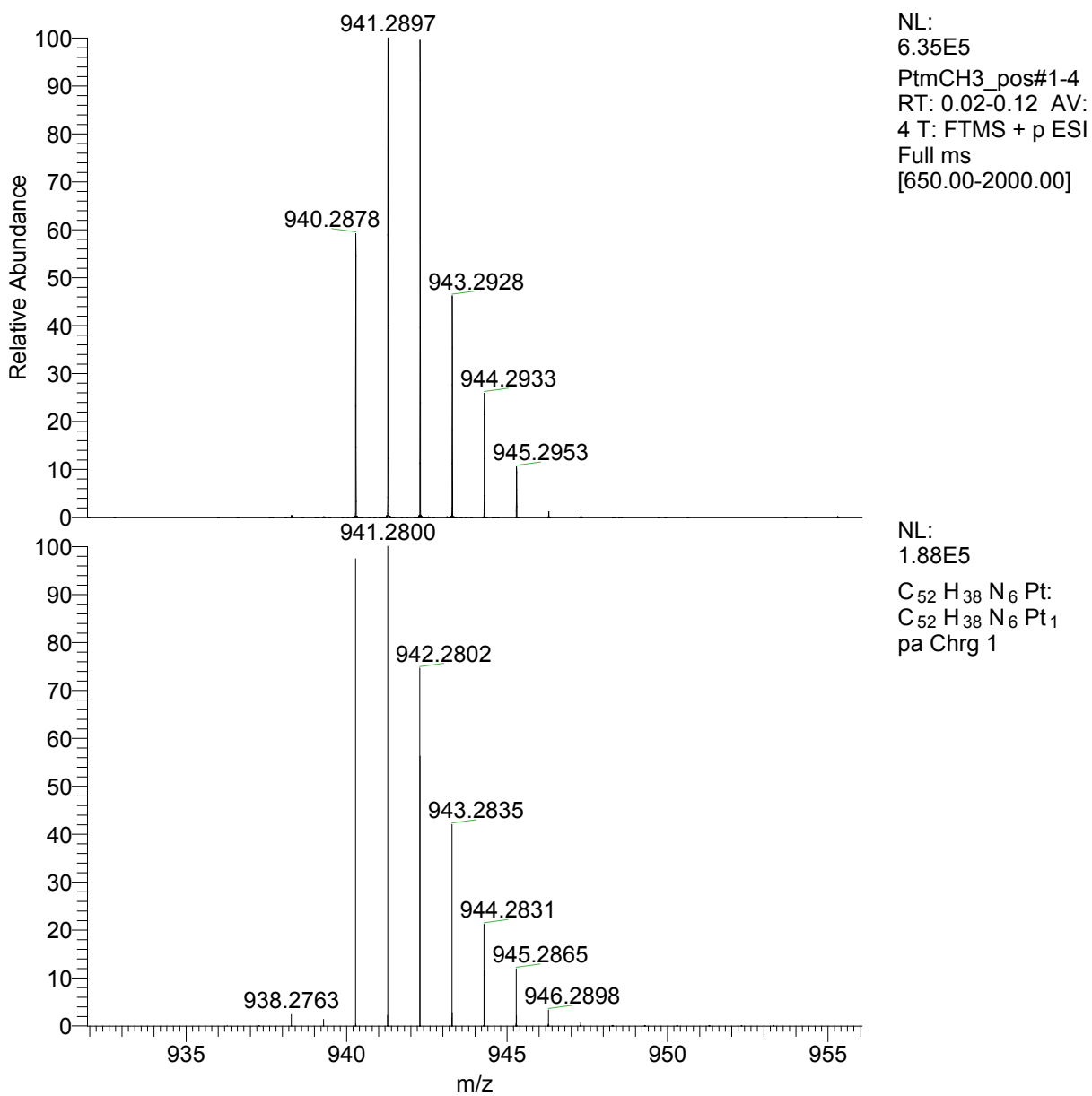


Figure S10. Close-up of positive-mode ESI MS of Pt[*TP*CH₃PC](*m*-C₆H₄CN)(py): experimental (above) and simulation (below).

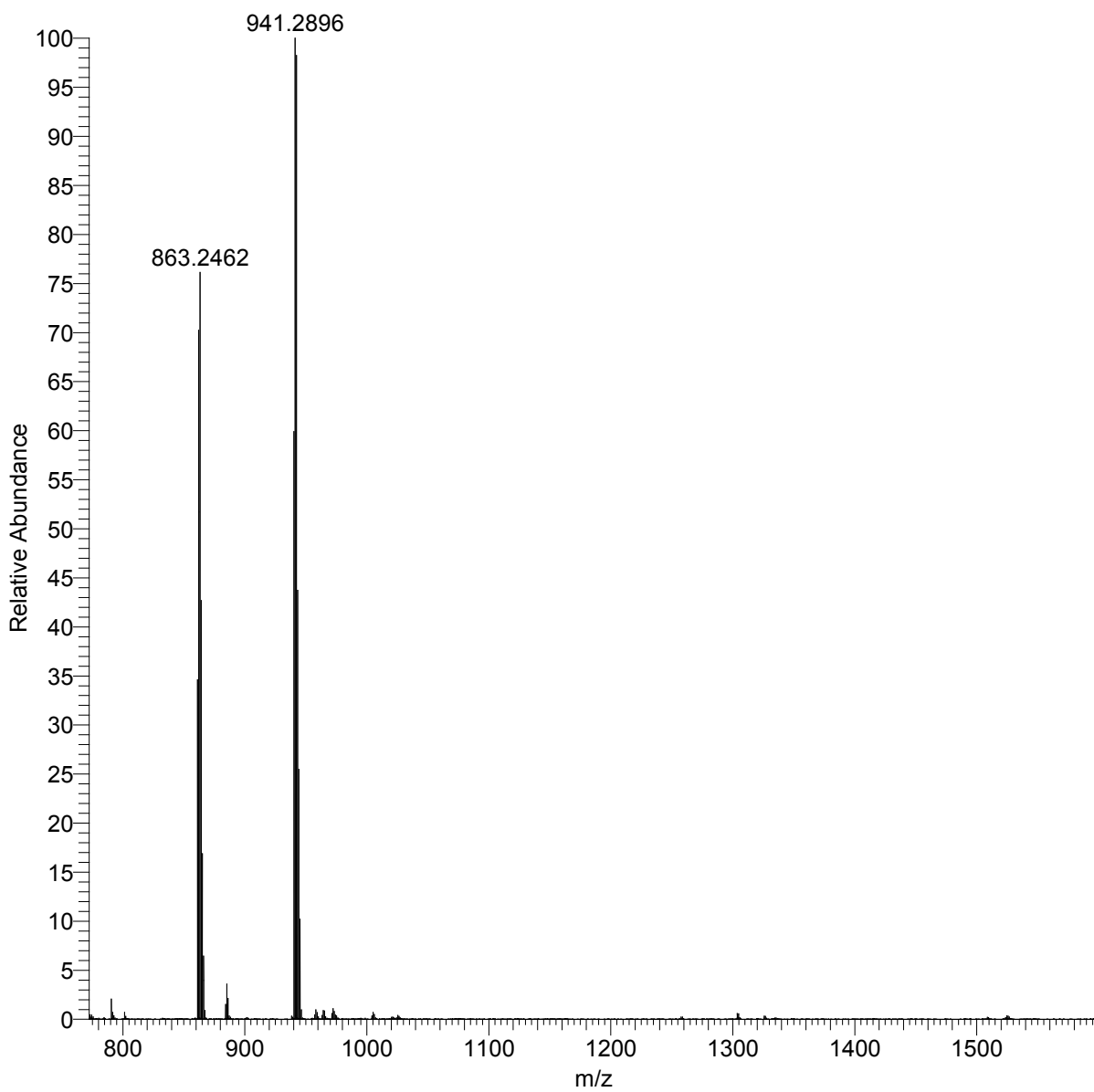


Figure S11. Positive-mode ESI MS of Pt[T(*p*CH₃PC)](*p*-C₆H₄CN)(py).

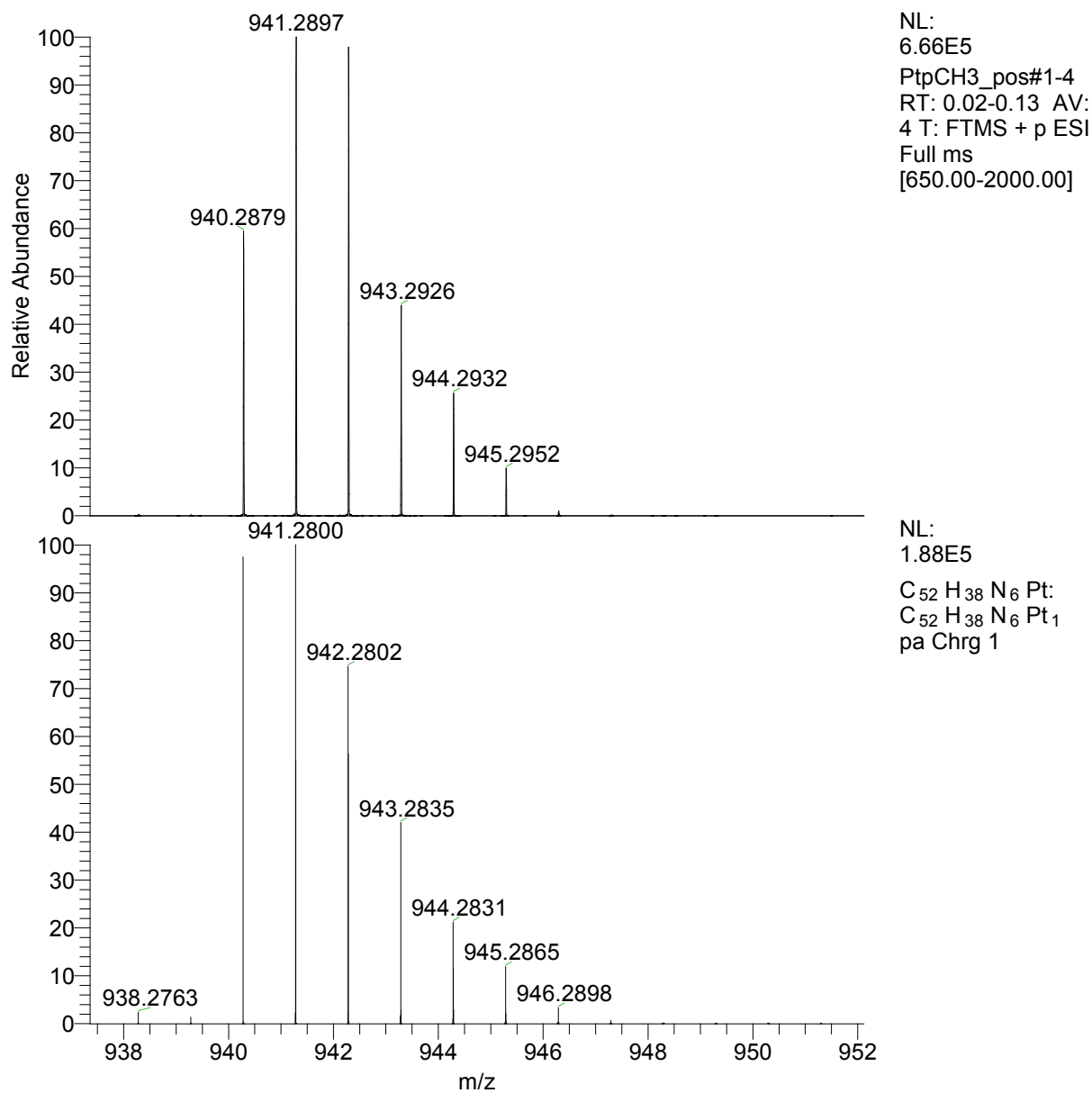


Figure S12. Close-up of positive-mode ESI MS of $\text{Pt}[\text{T}(p\text{CH}_3\text{PC})](p\text{-C}_6\text{H}_4\text{CN})(\text{py})$: experimental (above) and simulation (below).