

# CRC MSI-H subtyping

TCGA+GSE39582

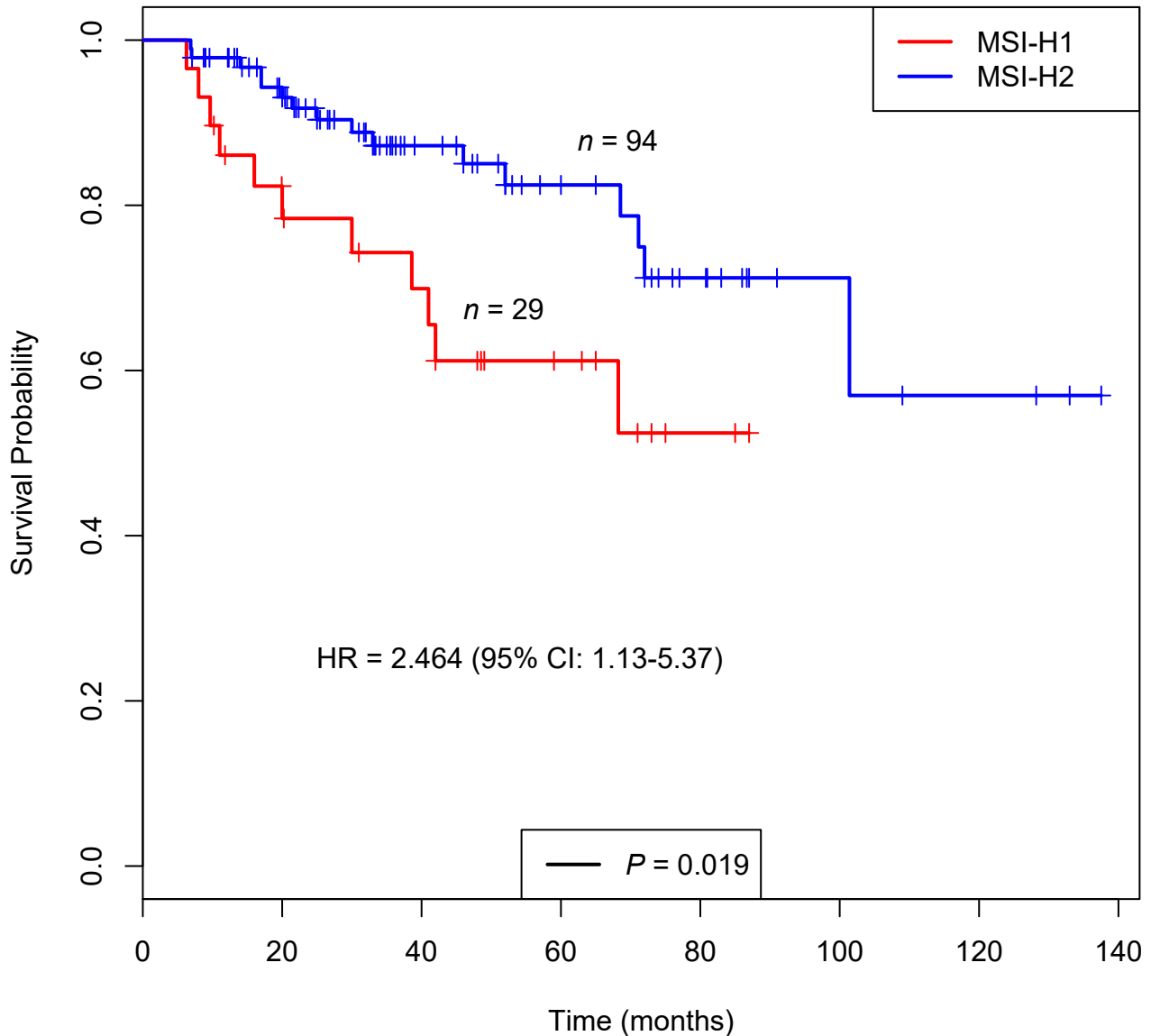


Figure S6 Survival status of MSI-H CRC subtypes. Kaplan-Meier curves showing OS according to MSI-H subtypes. Clearly, a better prognosis was observed for MSI-H2 than for MSI-H1. The HR shown on the graph is derived from univariable Cox proportional hazards model testing. Abbreviations: CI, confidence interval; HR, hazard ratio; **P**, P-value.