

Supporting Information

**Phenylpropanoid Glycerol Glucosides Attenuate Glucose Production in Hepatocytes**

Anne F. Murray<sup>1</sup>, Kimberly Palatini<sup>2,3</sup>, Slavko Komarnytsky<sup>2,3</sup>, Thomas J. Gianfagna<sup>4</sup>, and John P. Munafo Jr <sup>1\*</sup>

1 Department of Food Science, University of Tennessee Institute of Agriculture, Knoxville, Tennessee 37996

2 Plants for Human Health Institute, FBNS, North Carolina State University, 600 Laureate Way, Kannapolis, North Carolina 28081

3 Department of Food, Bioprocessing, and Nutrition Sciences, North Carolina State University, 400 Dan Allen Drive, Raleigh, NC 27695

4 Department of Plant Biology, Rutgers-The State University of New Jersey, 59 Dudley Rd, New Brunswick, New Jersey 08901

\* Corresponding author

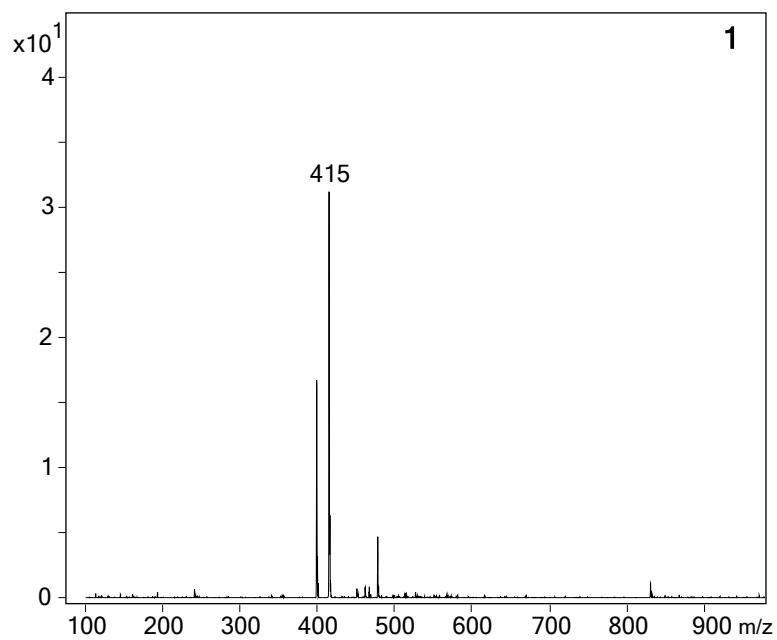
865-974-7247 Office / 865-974-7332 Fax

Email [jmunaf@utk.edu](mailto:jmunaf@utk.edu)

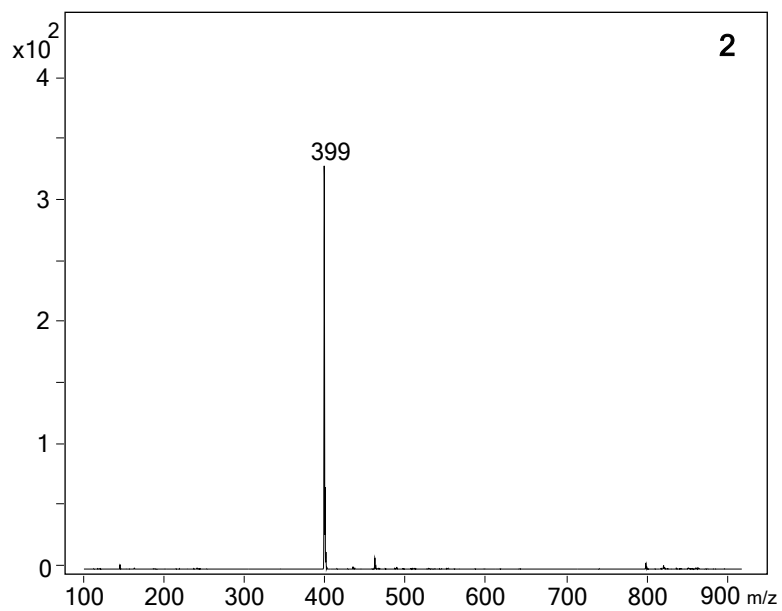
*Brief statement in non-sentence format listing the contents of the material supplied as Supporting Information.*

- Mass spectra of each of the nine compounds identified from the blubs of *L. longiflorum*.

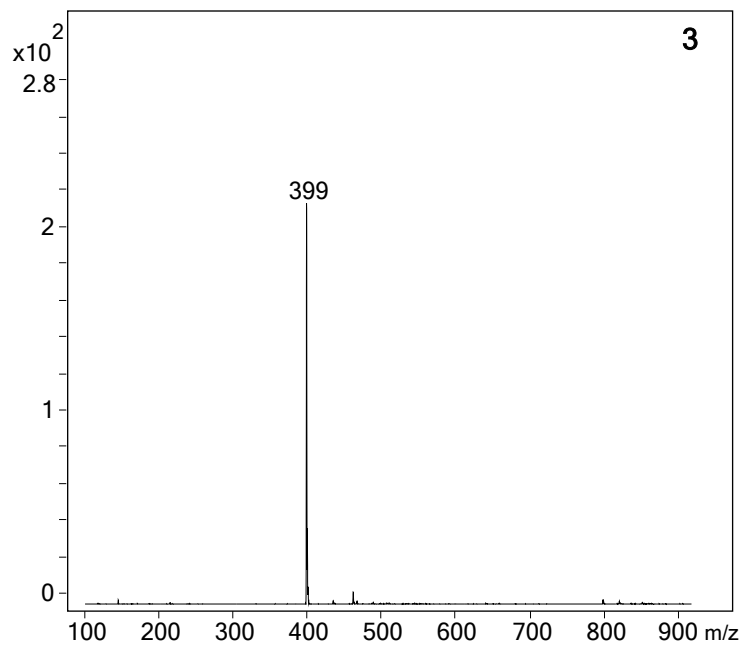
**Figure S1:** ESI-MS mass spectra of compound **1** identified in *L. longiflorum*.



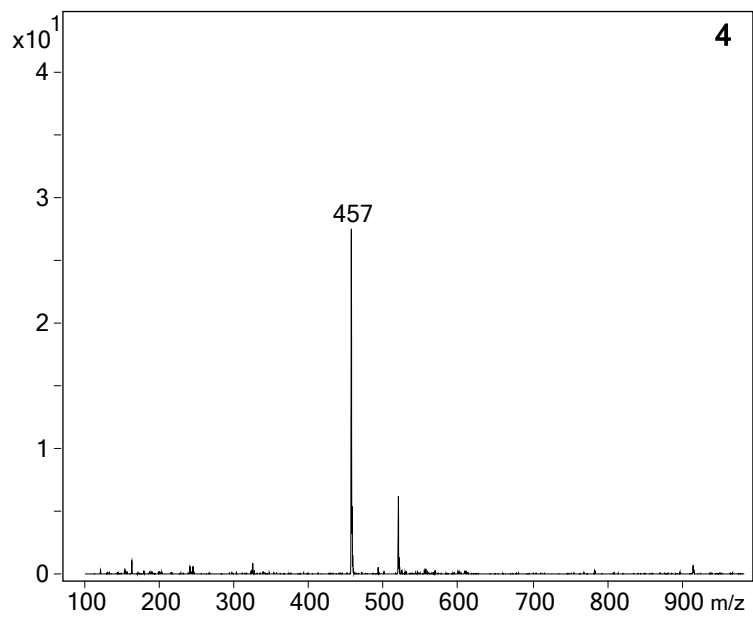
**Figure S2:** ESI-MS mass spectra of compound **2** identified in *L. longiflorum*.



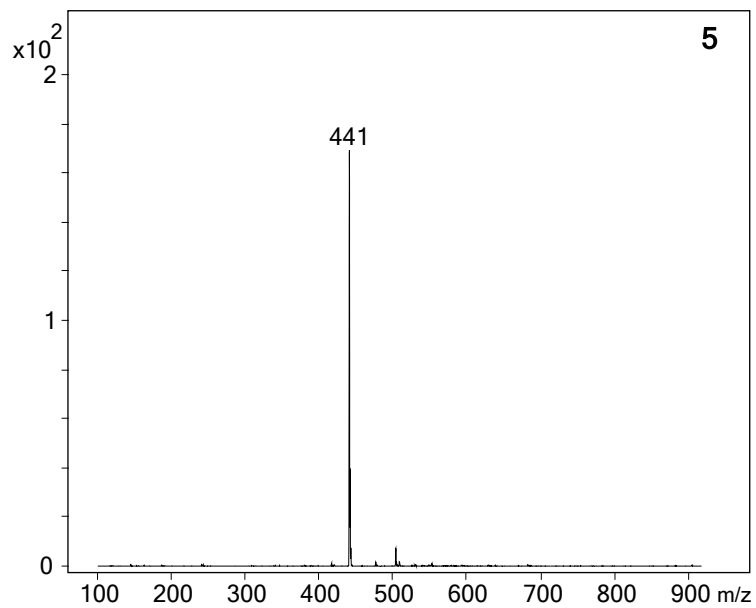
**Figure S3:** ESI-MS mass spectra of compound **3** identified in *L. longiflorum*.



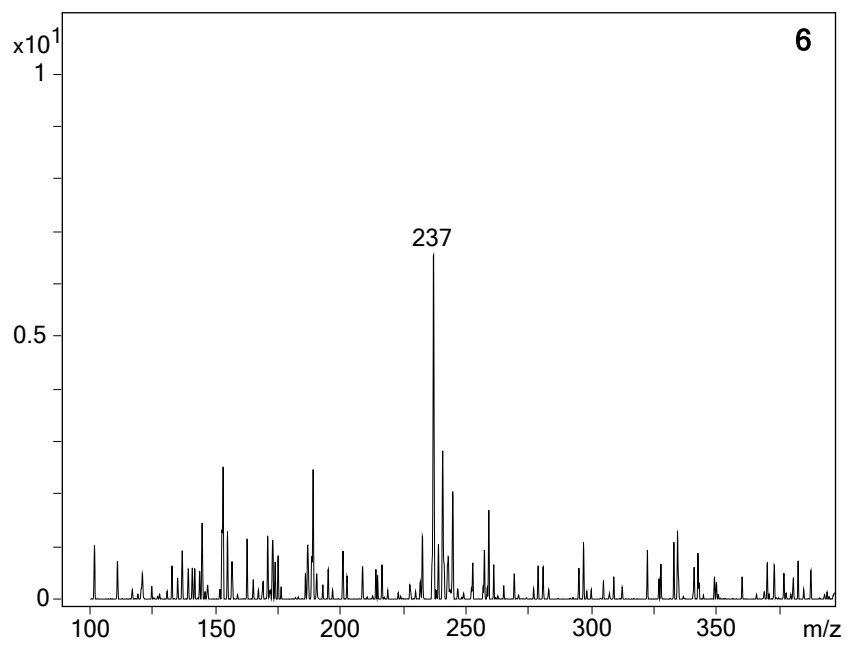
**Figure S4:** ESI-MS mass spectra of compound **4** identified in *L. longiflorum*.



**Figure S5:** ESI-MS mass spectra of compound **5** identified in *L. longiflorum*.

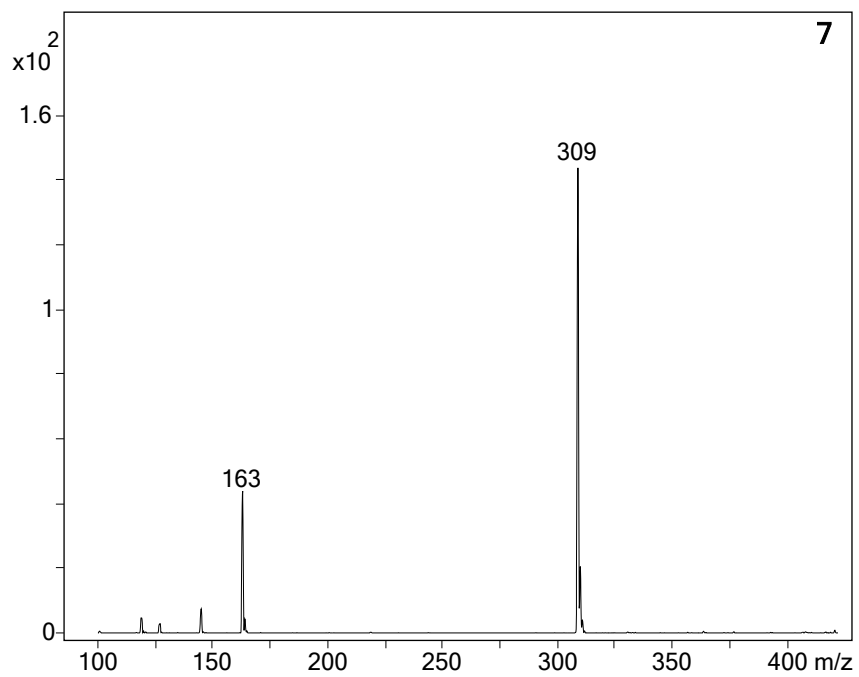


**Figure S6:** ESI-MS mass spectra of compound **6** identified in *L. longiflorum*.

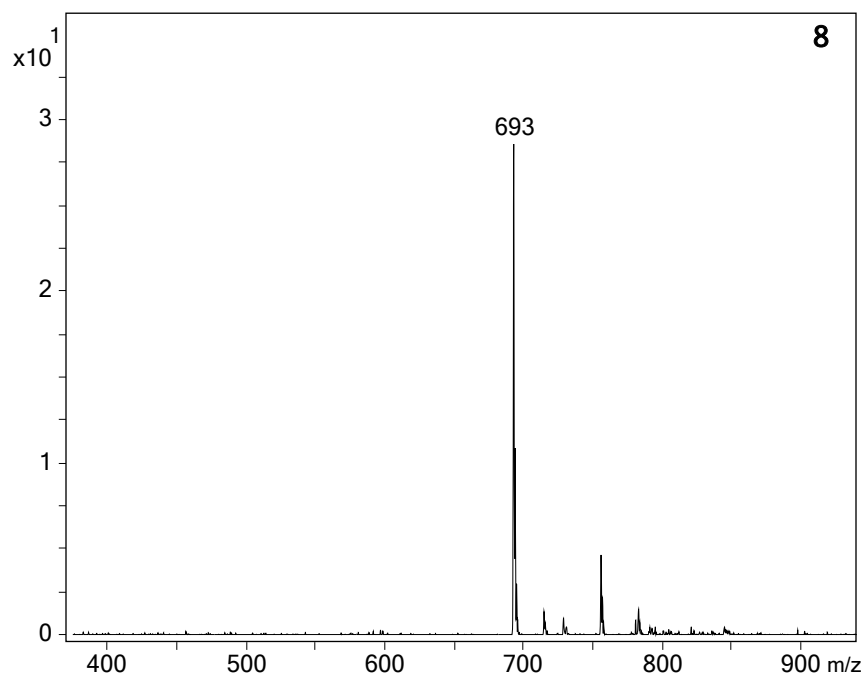




**Figure S7:** ESI-MS mass spectra of compound **7** identified in *L. longiflorum*.



**Figure S8:** ESI-MS mass spectra of compound **8** identified in *L. longiflorum*.



**Figure S9:** ESI-MS mass spectra of compound **9** identified in *L. longiflorum*.

