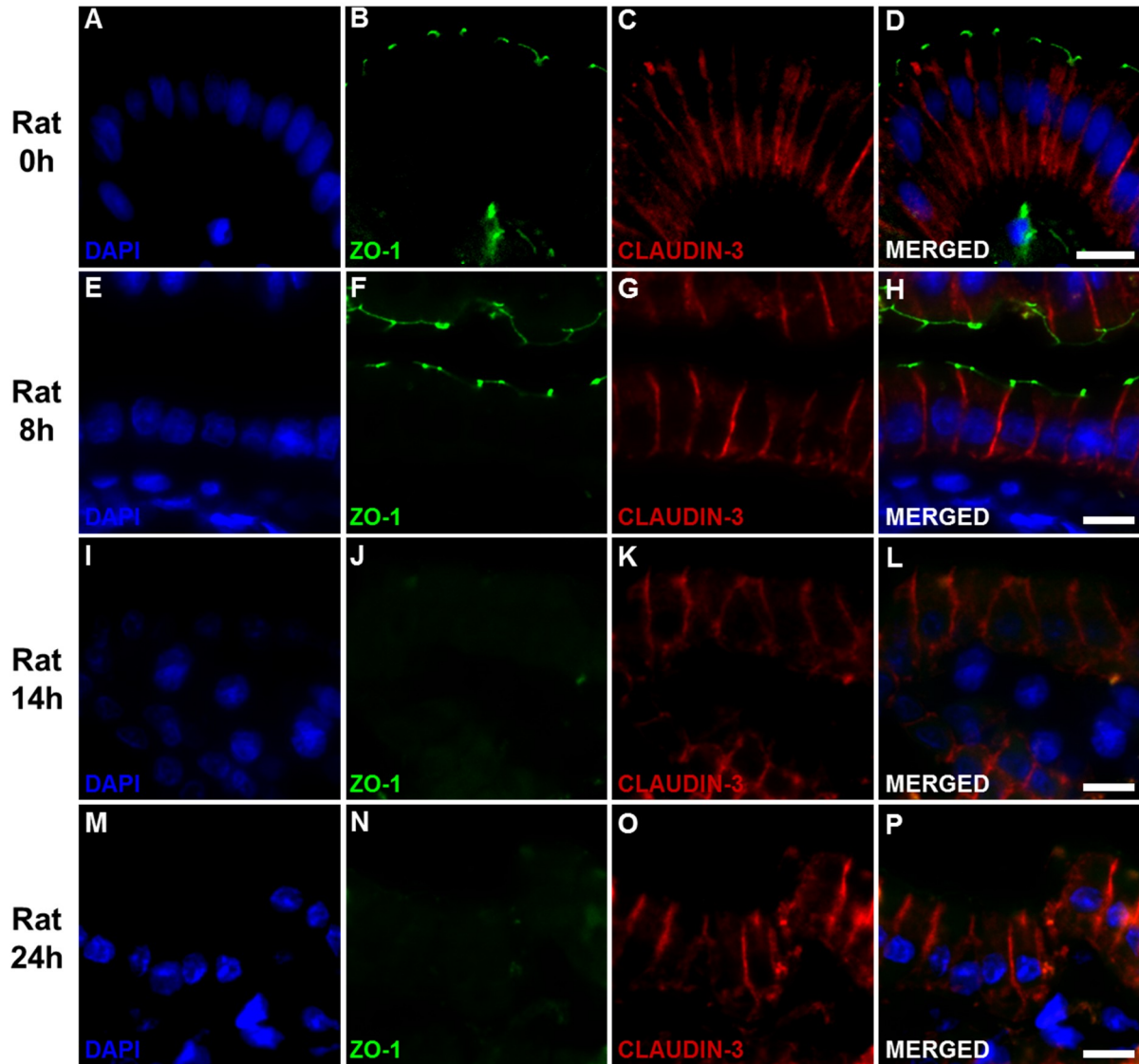
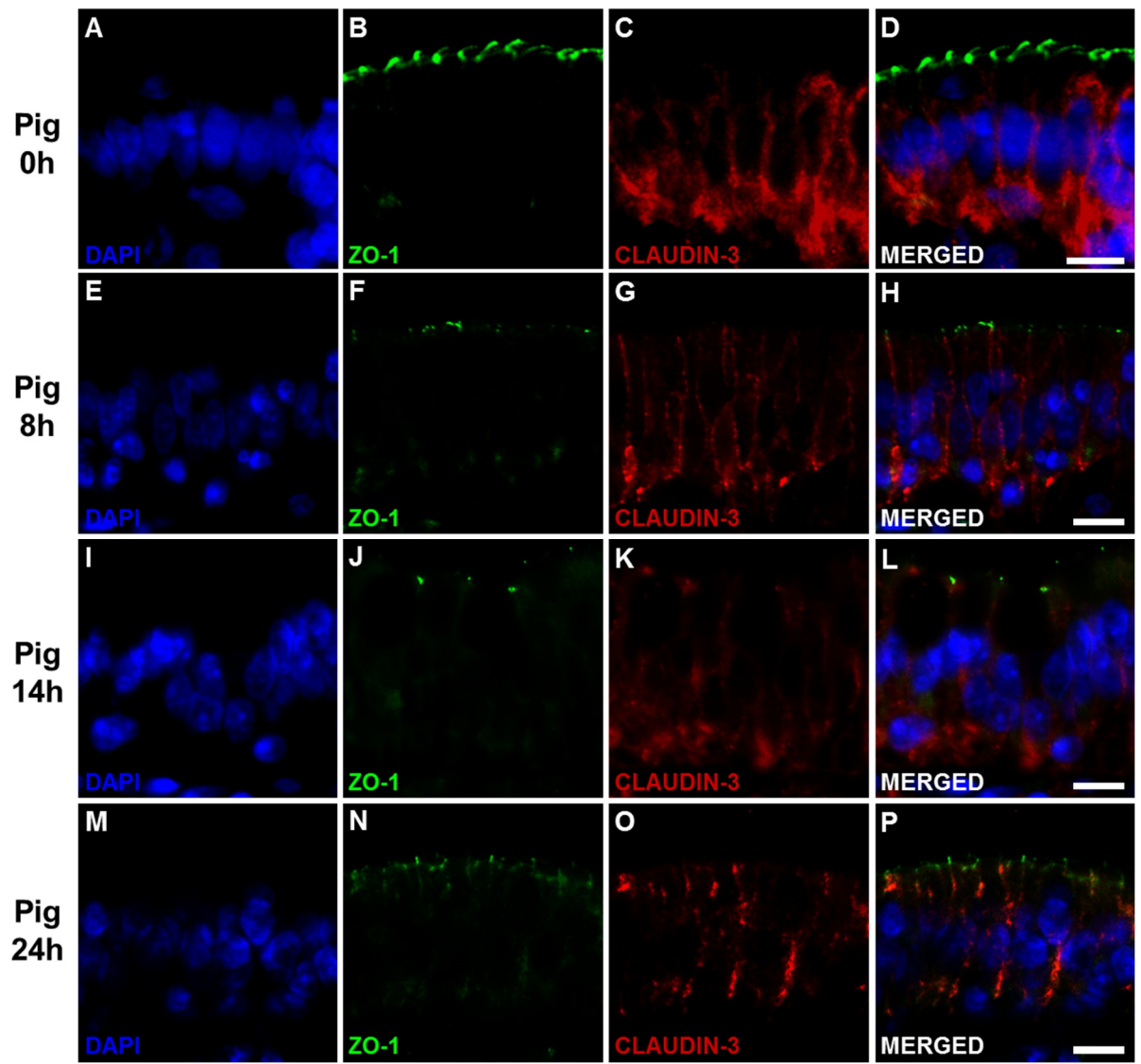
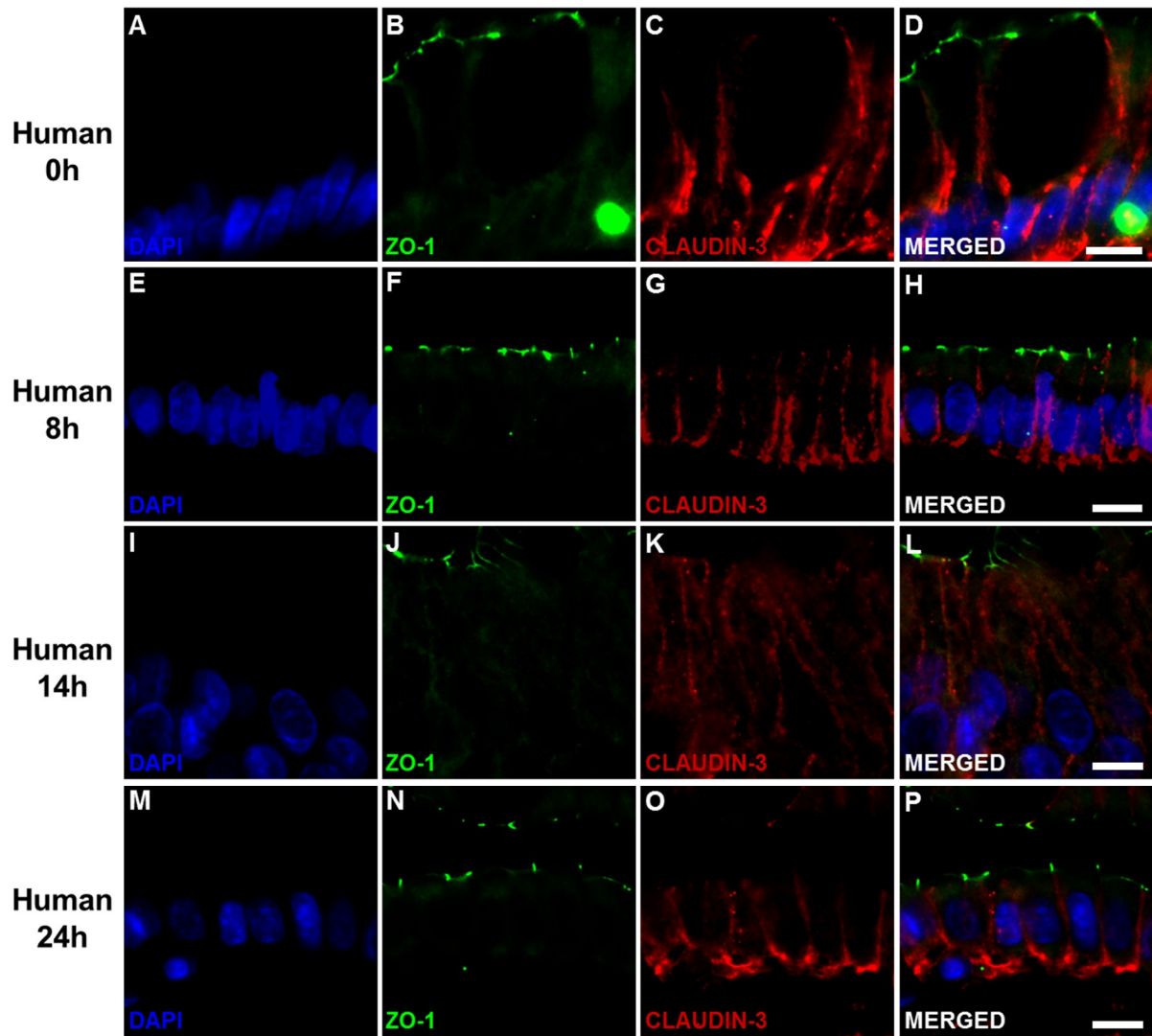


**Supplementary Table S1.** Characteristics and variables of the seven human organ donors.

| Donor | COD                                | Age | BMI  | Gender | NA dose<br>( $\mu\text{g}/\text{kg}/\text{min}$ ) | ICU stay |
|-------|------------------------------------|-----|------|--------|---|----------|
| 1     | Cardiac arrest/Cerebral anoxia     | 51  | 30.1 | F      | Yes—dose N/A                                      | 2        |
| 2     | Cerebral trauma                    | 13  | 22.9 | F      | 0.057   | 2        |
| 3     | Cardiac arrest/Cerebral anoxia     | 27  | 23.7 | M      | N/A   | 1        |
| 4     | Cerebral trauma                    | 46  | 21   | M      | 0.14  | 2        |
| 5     | Spontaneous intracerebral bleeding | 53  | 22.2 | F      | Yes—dose N/A                                      | 3        |
| 6     | Spontaneous intracerebral bleeding | 62  | 23   | F      | 0.02  | 2        |
| 7     | Cardiac arrest/Cerebral anoxia     | 48  | 28   | F      | 0.2   | 2        |







**Supplementary Figure S1.** Immunofluorescence staining for the tight junction proteins zonula occludens (ZO)-1 (green) and claudin-3 (red) in rat (first panel), pig (second panel), and human (third panel) intestine after eight hours (upper row), fourteen hours (middle row), and 24 hours of cold storage (lower row). Nuclei stained blue using 4',6-diamidino-2-phenylindole (DAPI). Original magnification, x400; scale bar, 10  $\mu$ m.