

International Journal of Environmental Research and Public Health

Supplemental Material for

**The Impacts of Prescribed Burning on PM_{2.5} Air Quality and Human Health:
Application to Georgia, USA**

Ran Huang, Yongtao Hu, Armistead G. Russell, James A. Mulholland, M. Talat Odman *

School of Civil and Environmental Engineering, Georgia Institute of Technology, Atlanta, GA 30332, USA;
ranhuang2014@gatech.edu (R.H.); yh29@mail.gatech.edu (Y.H.); ted.russell@gatech.edu (A.G.R.);
james.mulholland@ce.gatech.edu (J.A.M.)

* Correspondence: odman@gatech.edu

Contents of this file

Figures S1 to S7

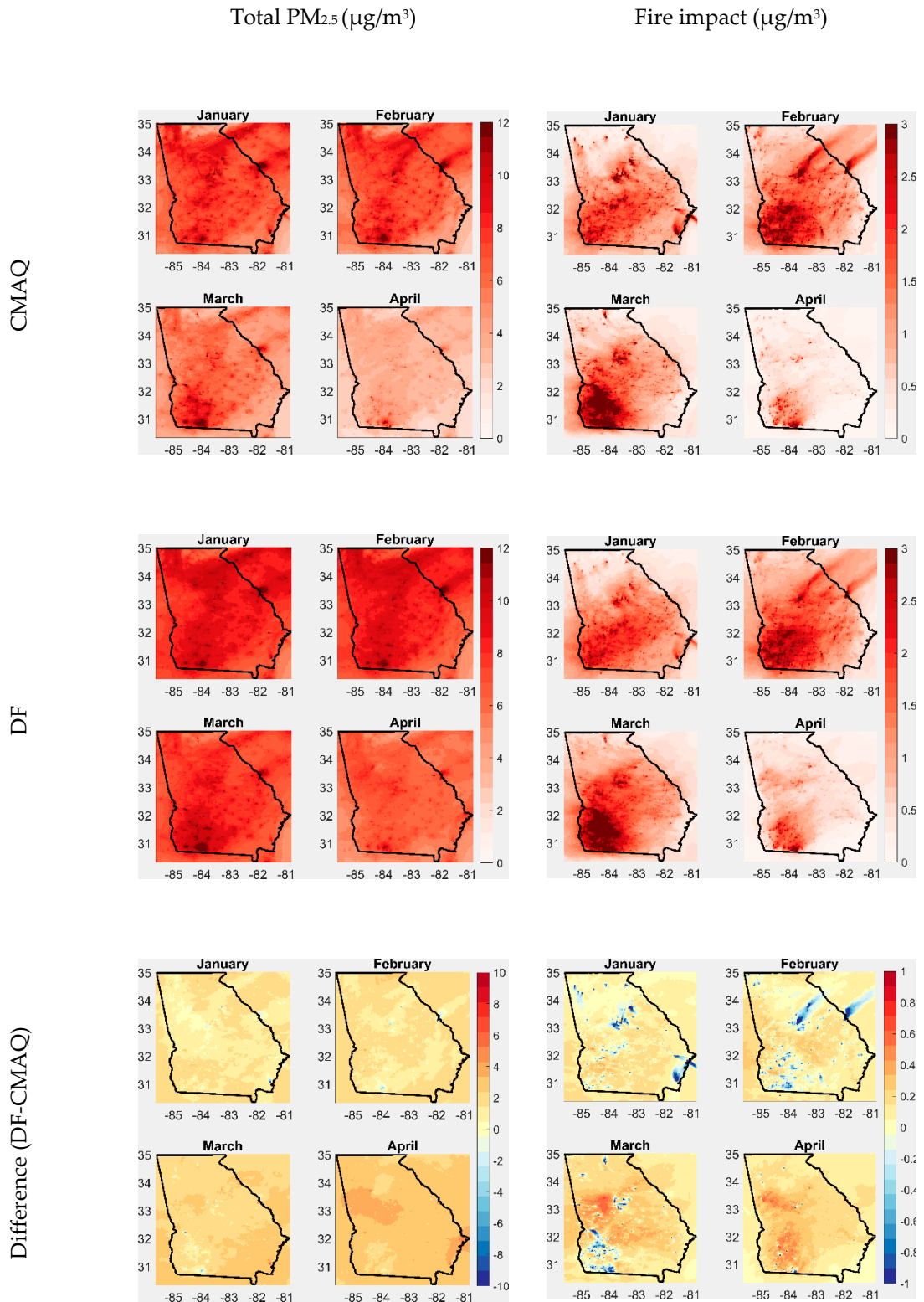


Figure S1. January–April monthly averages of total PM_{2.5} and fire impact (2015): CMAQ-simulated, data fused and their difference.

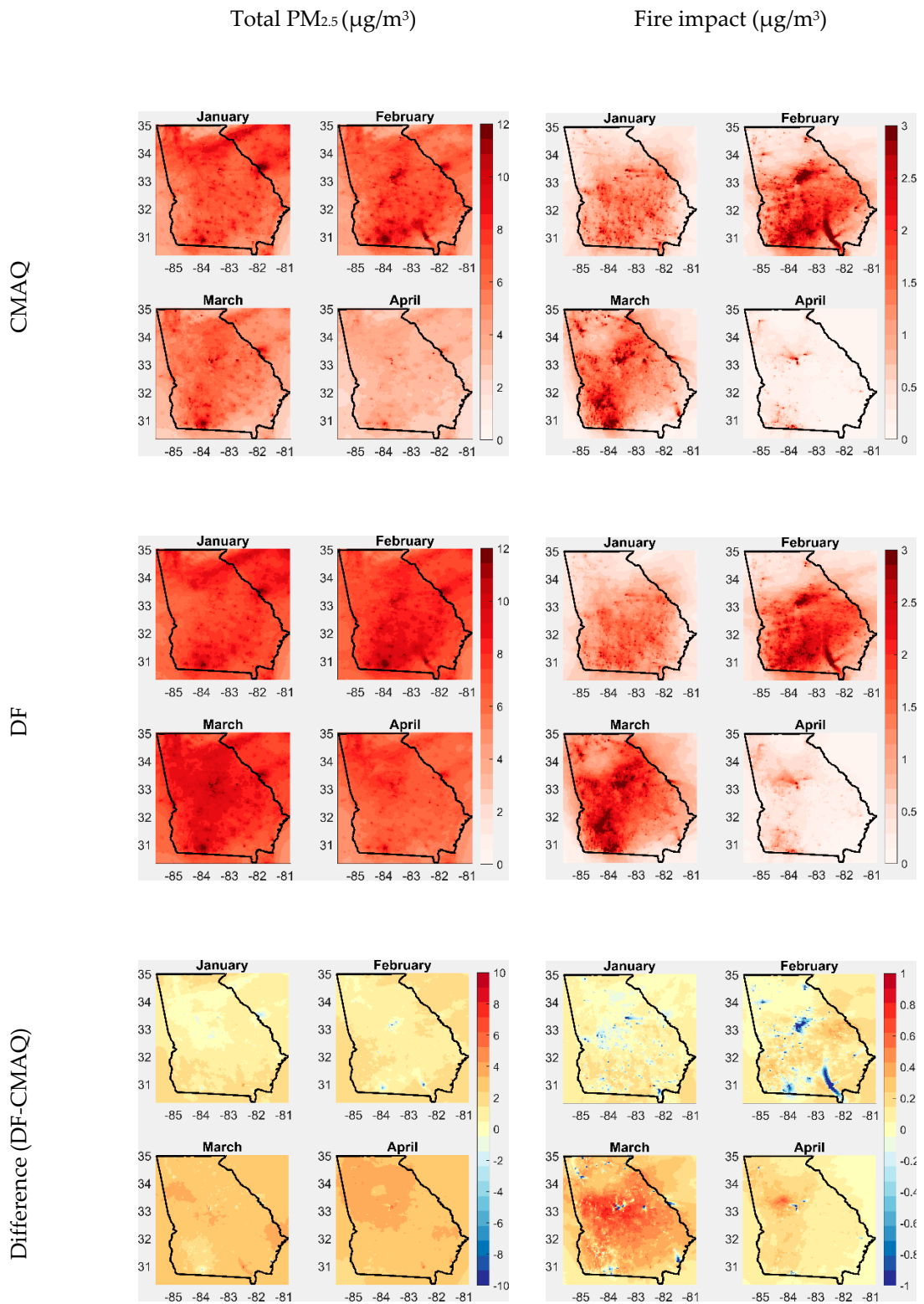


Figure S2. January–April monthly averages of total PM_{2.5} and fire impact (2016): CMAQ-simulated, data fused and their difference.

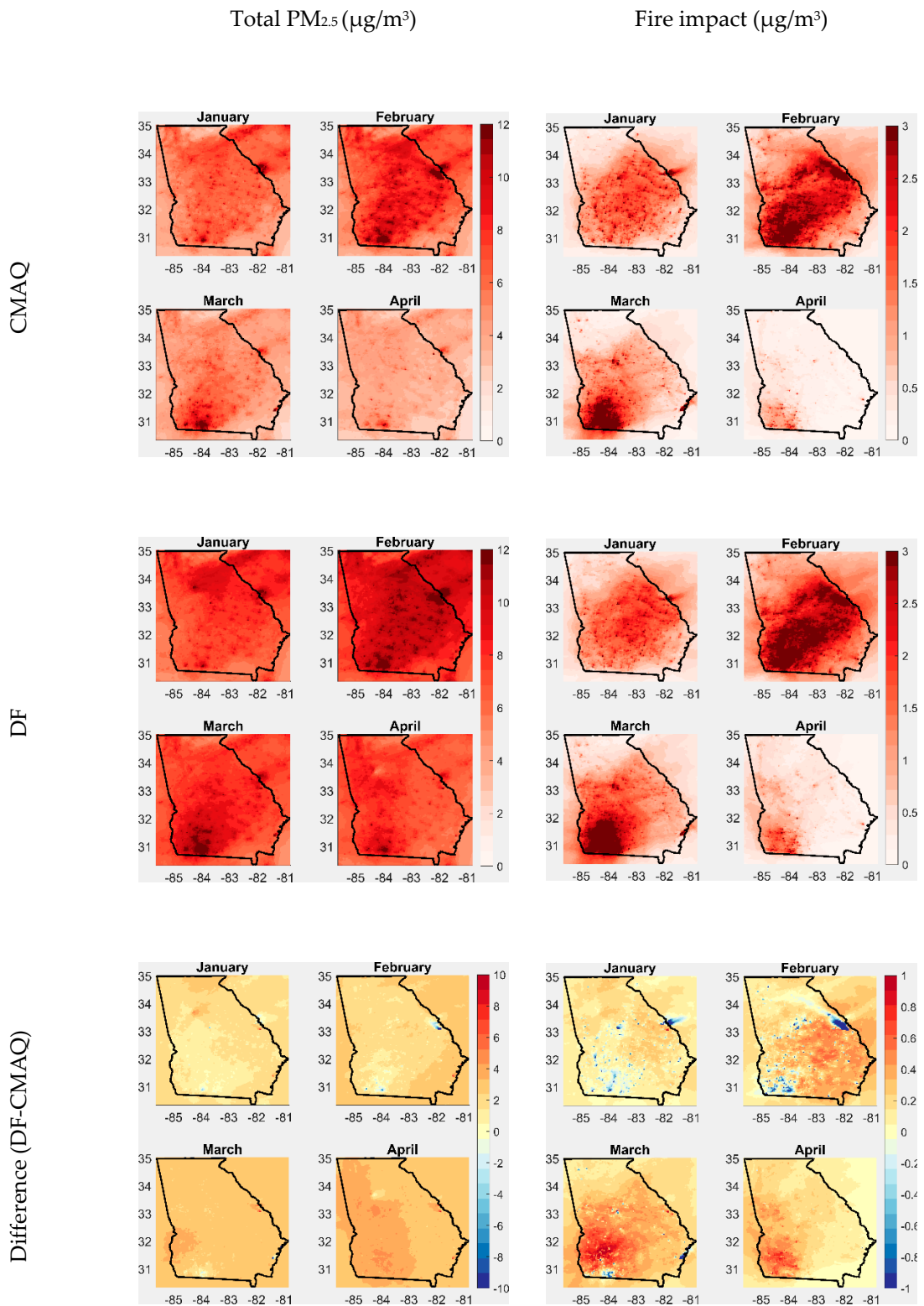


Figure S3. January–April monthly averages of total PM_{2.5} and fire impact (2017): CMAQ-simulated, data fused and their difference.

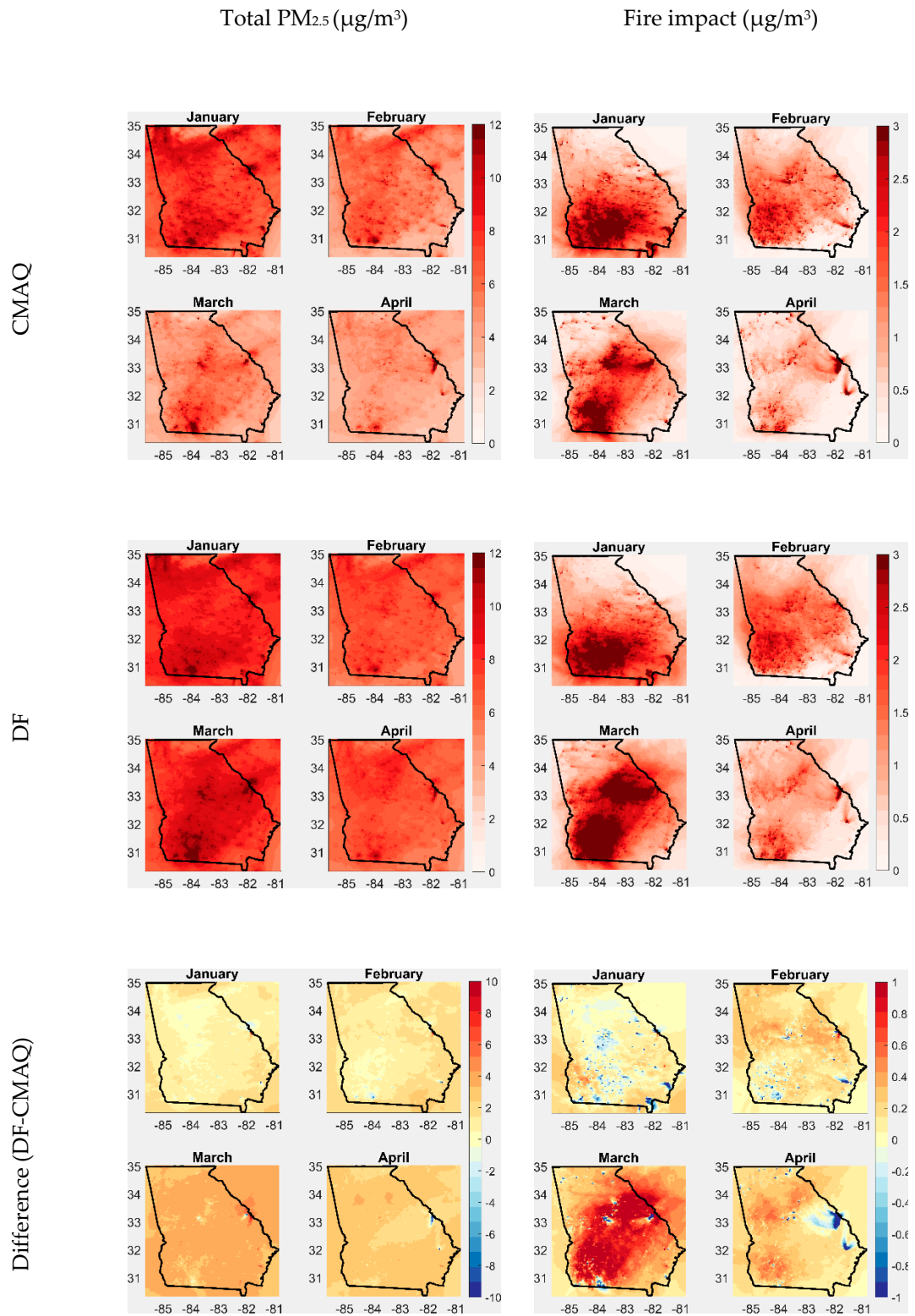


Figure S4. January–April monthly averages of total PM_{2.5} and fire impact (2018): CMAQ-simulated, data fused and their difference.

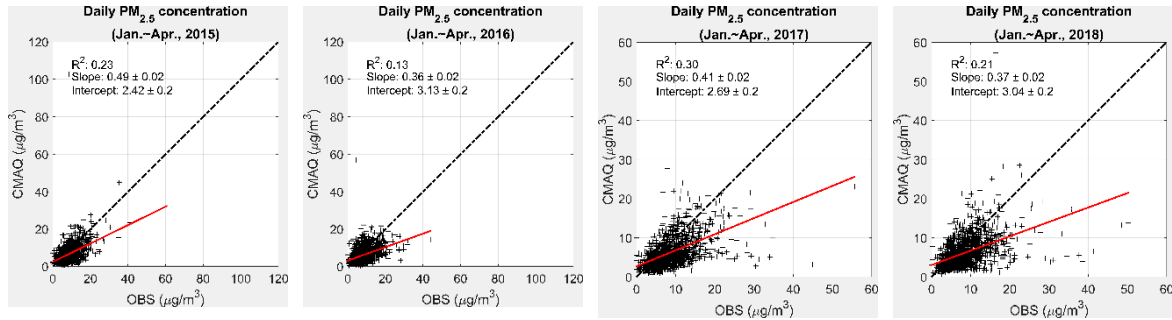


Figure S5. Comparison of daily total PM_{2.5} concentrations between observations (OBS) and CMAQ from 2015 to 2018, first four months.

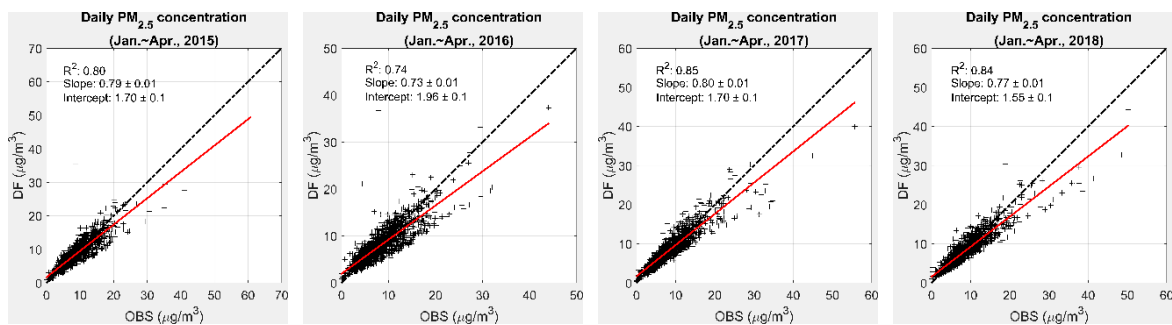


Figure S6. Comparison of daily total PM_{2.5} concentrations between observations (OBS) and DF from 2015 to 2018, first four months.

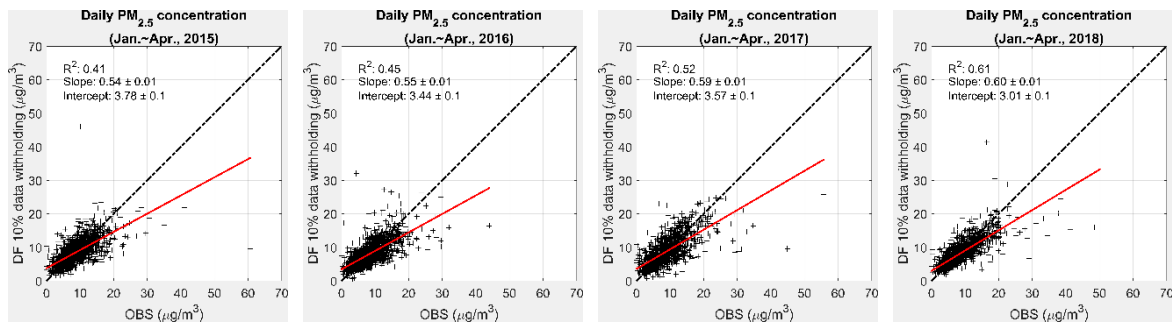


Figure S7. Comparison of daily total PM_{2.5} concentrations between observations (OBS) and 10% data withholding DF from 2015 to 2018, first four months.