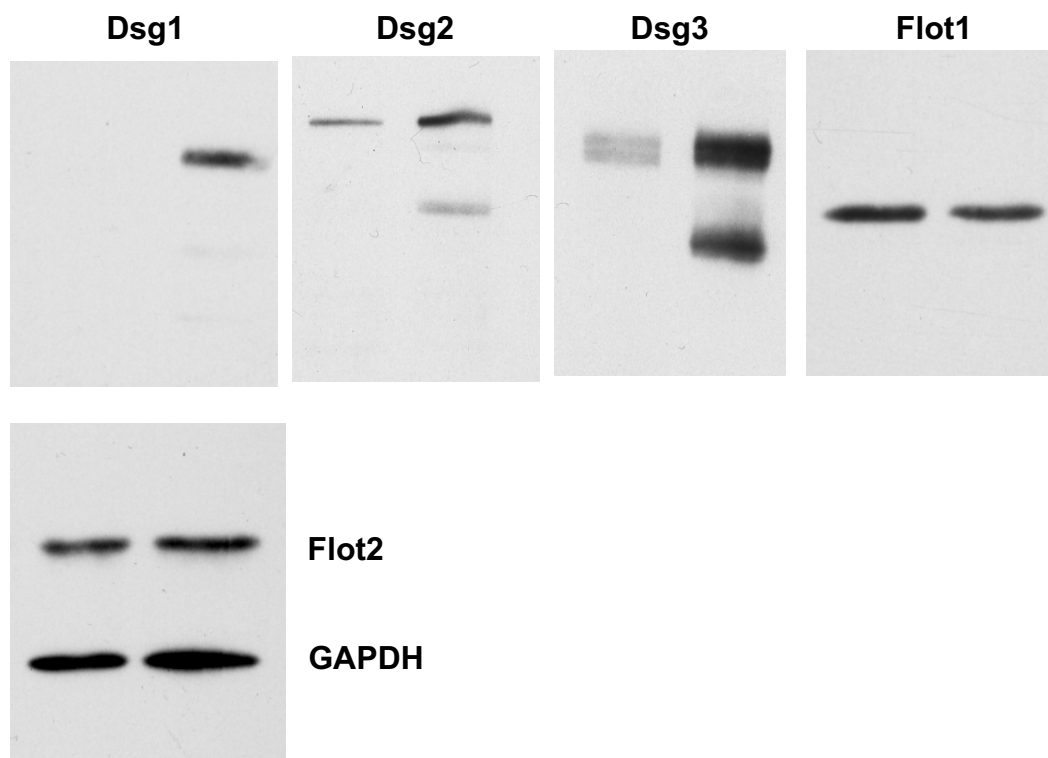


Supplementary Figures ijms-532768

Full Blots for Figure 4. For Dsg blots, the upper part of the gel (MW range above 60 kDa) was used, whereas the lower part was used for Flots. GAPDH was incubated on the same blot slice as Flot2.



Full Blots for Figure 6. For Dsg blots, the upper part of the gel (MW range above 60 kDa) was used, whereas the lower part was used for Flots.

