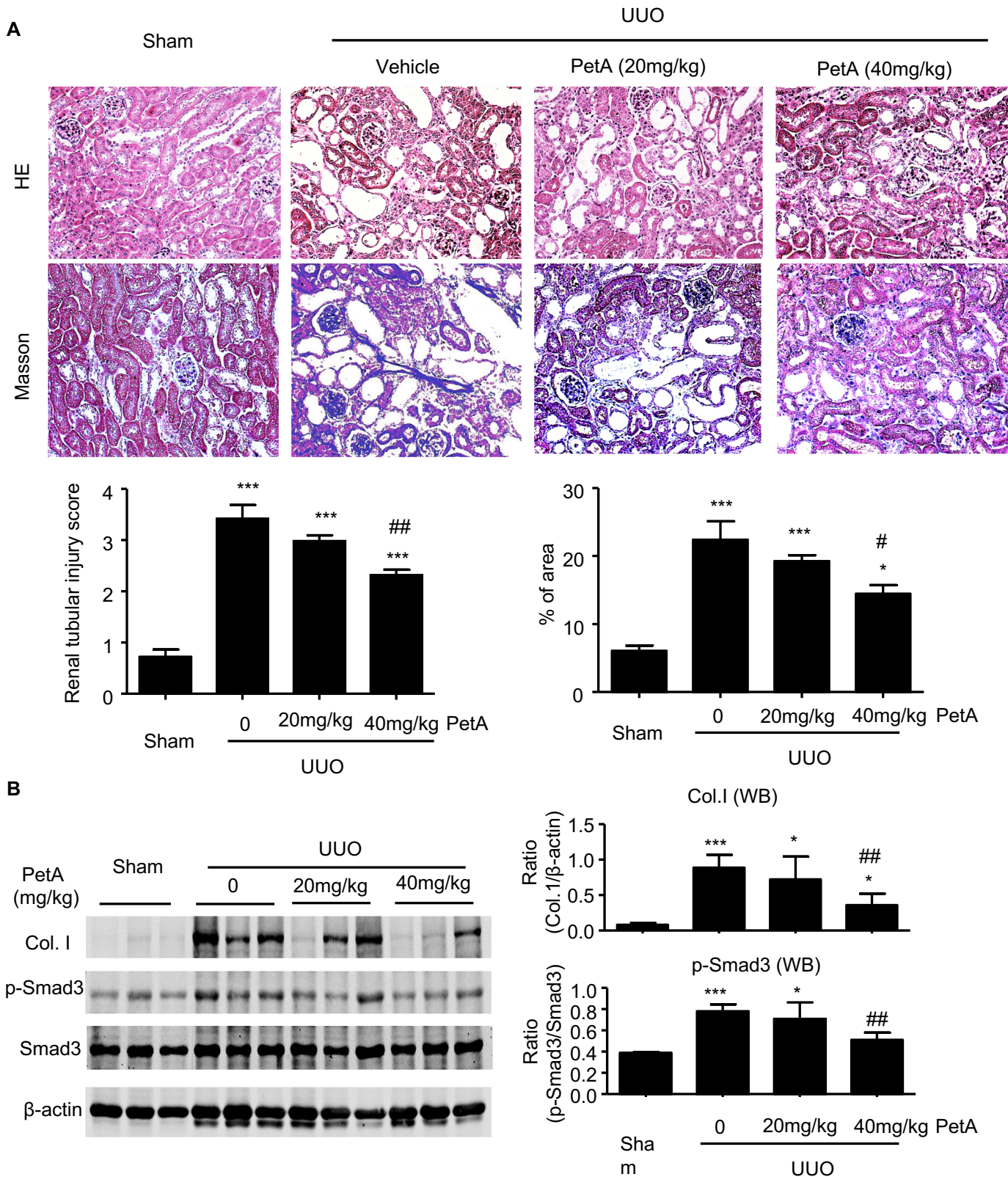


**Supplement Figure S1. PetA does not affect the viability or proliferation of HK-2 cells.** HK-2 cells were incubated with different concentrations of petA for 12 hours. Cell viability was determined by the MTT assay.



**Supplement Figure S2. PetA ameliorates renal interstitial fibrosis in UUO kidneys.** PetA was intraperitoneal injected at the dosage of 0, 20 and 40 mg/kg per day right after UUO. Mice were sacrificed at day 5 after UUO. (A) HE & Masson staining, and (B) western blot analyses demonstrated that 40mg/kg of PetA per day significantly decrease phosphorylation of Smad3 and the expression of collagen I. \*  $p < 0.05$ , \*\*\*  $p < 0.001$  vs sham group; #  $p < 0.05$ , ##  $p < 0.01$  vs UUO + vehicle,  $n = 5$  in each group. Magnification 200 $\times$ .