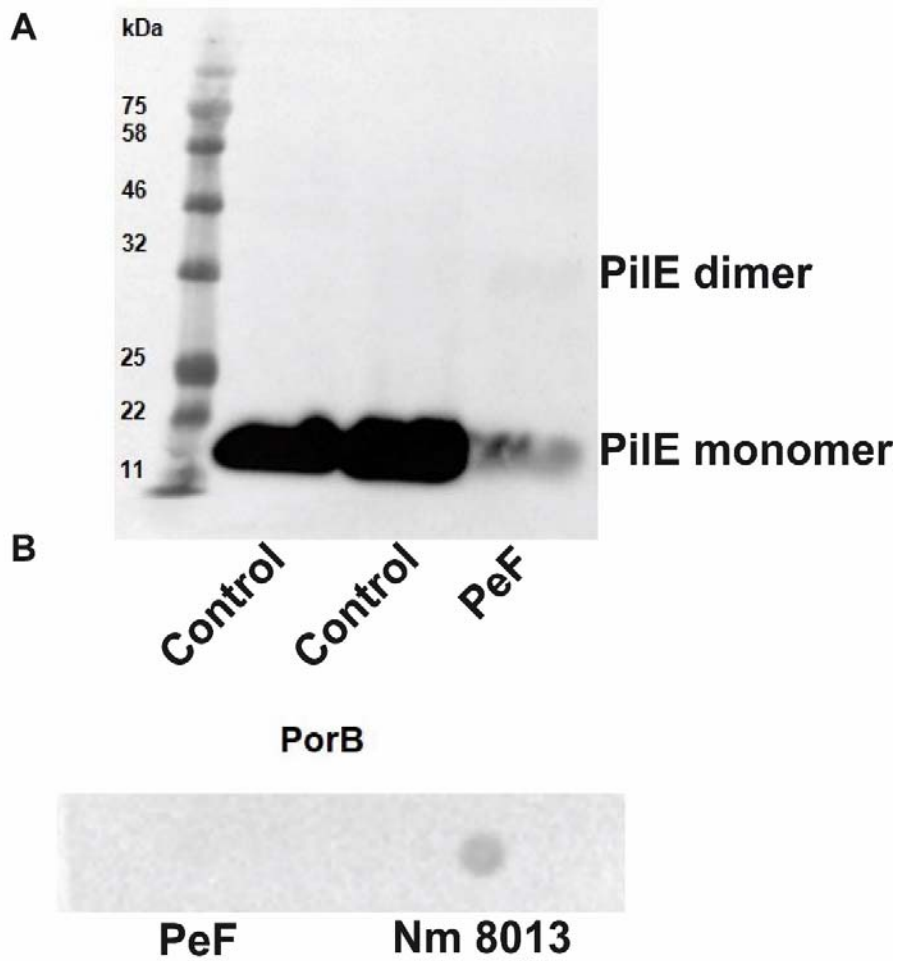


Figure S3



Supplementary Fig. 3: Pili enriched fraction (PeF) were purified from the piliated wildtype strain *N. meningitidis* 8013 and routinely analyzed by (A) Immunoblotting with antibody SM1 (anti-PilE mouse monoclonal antibody; generously provided by M. Virji (2)) after SDS-PAGE of whole-cell bacteria (control) or PeF. (B) Dot blot assay using a primary mouse anti-PorB antibody to confirm absence of PorB in PeFs from *N. meningitidis* 8013. Bacterial lysates of *N. meningitidis* 8013 (8013) were used as a positive control.