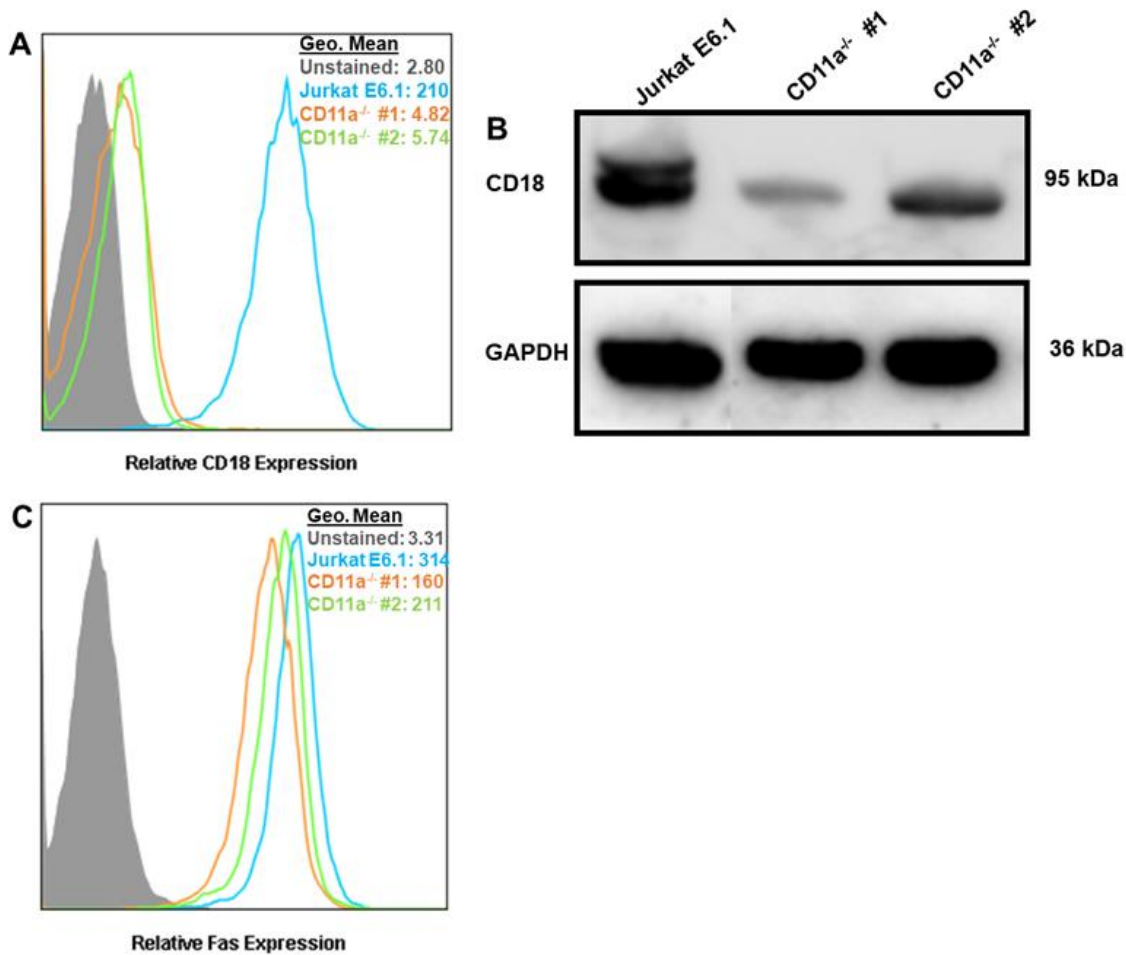


**Supplemental Figure 1. Genomic alteration of CD18 leads to complete loss of surface expression of CD11a.** (A) Flow cytometric analysis of Jurkat E6.1 cells and both Jurkat CD18<sup>-/-</sup> clones for surface expression of CD11a. The shaded peak represents unstained cells; blue is Jurkat E6.1 cells; orange is Jurkat CD18<sup>-/-</sup> clone 1; green is Jurkat CD18<sup>-/-</sup> clone 2. (B) Western blot analysis of Jurkat CD18<sup>-/-</sup> cells for expression of CD11a (top) and GAPDH loading control (bottom). First lane, Jurkat E6.1 cells; lane 2, Jurkat CD18<sup>-/-</sup> clone 1; lane 3, Jurkat CD18<sup>-/-</sup> clone 2. (C) Flow cytometric analysis of Jurkat E6.1 cells and both Jurkat CD18<sup>-/-</sup> clones for surface expression of Fas. The shaded peak represents unstained cells; blue is Jurkat E6.1 cells; orange is Jurkat CD18<sup>-/-</sup> clone 1; green is Jurkat CD18<sup>-/-</sup> clone 2.



**Supplemental Figure 2. Genomic alteration of CD11a ablates surface expression of CD18.** (A) Flow cytometric analysis of Jurkat E6.1 cells and both Jurkat CD11a<sup>-/-</sup> clones for surface expression of CD18. The shaded peak represents unstained cells; blue is Jurkat E6.1 cells; orange is Jurkat CD11a<sup>-/-</sup> clone 1; green is Jurkat CD11a<sup>-/-</sup> clone 2. (B) Western blot analysis of Jurkat CD11a<sup>-/-</sup> cells for expression of CD18 (top) and GAPDH loading control (bottom). First lane, Jurkat E6.1 cells; lane 2, Jurkat CD11a<sup>-/-</sup> clone 1; lane 3, Jurkat CD11a<sup>-/-</sup> clone 2. (C) Flow cytometric analysis of Jurkat E6.1 and both Jurkat CD11a<sup>-/-</sup> clones for surface expression of Fas. The shaded peak represents unstained cells; blue is Jurkat E6.1 cells; orange is Jurkat CD11a<sup>-/-</sup> clone 1; green is Jurkat CD11a<sup>-/-</sup> clone 2.