

Outcomes of liver transplantation for non-alcoholic steatohepatitis: A European Liver Transplant Registry study

Debashis Haldar, Barbara Kern, James Hodson, Matthew James Armstrong, Rene Adam, Gabriela Berlakovich, Josef Fritz, Benedikt Feurstein, Wolfgang Popp, Vincent Karam, Paolo Muiesan, John O’Grady, Neville Jamieson, Stephen J Wigmore, Jacques Pirenne, Seyed Ali Malek-Hosseini, Ernest Hidalgo, Yaman Tokat, Andreas Paul, Johann Pratschke, Michael Bartels, Pavel Trunecka, Utz Settmacher, Massimo Pinzani, Christophe Duvoux, Philip Noel Newsome, Stefan Schneeberger and all contributing centres (www.eltr.org) and the European Liver and Intestine Transplant Association (ELITA).

Table of contents

Fig. S1.....	3
Fig. S2.....	4
Fig. S3.....	5
Fig. S4.....	6
Fig. S5.....	7
Table S1.....	8
Table S2.....	9
Table S3.....	10
Table S4.....	11
Table S5.....	13

Table S6.....15

Table S7.....17

Table S8.....19

Table S9.....21

Table S10.....23

Table S11.....24

Table S12.....25

Table S13.....26

Table S14.....28

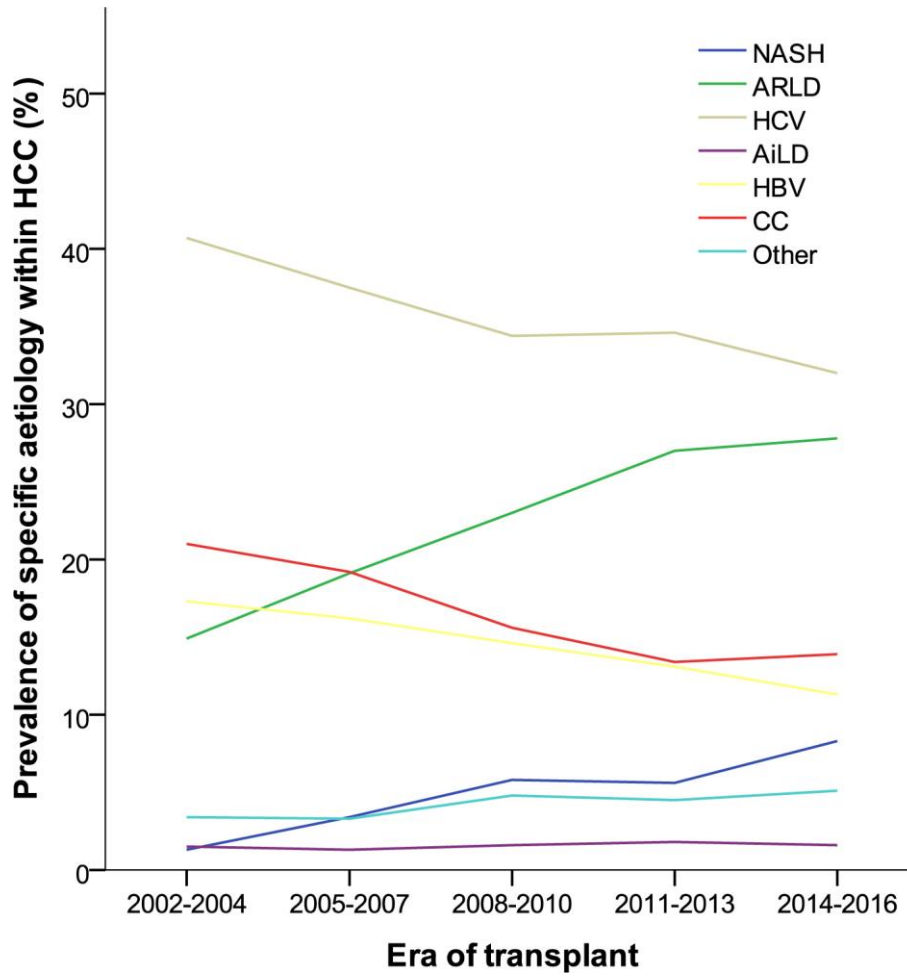


Fig. S1. Prevalence of liver disease aetiologies in patients with HCC in different era.

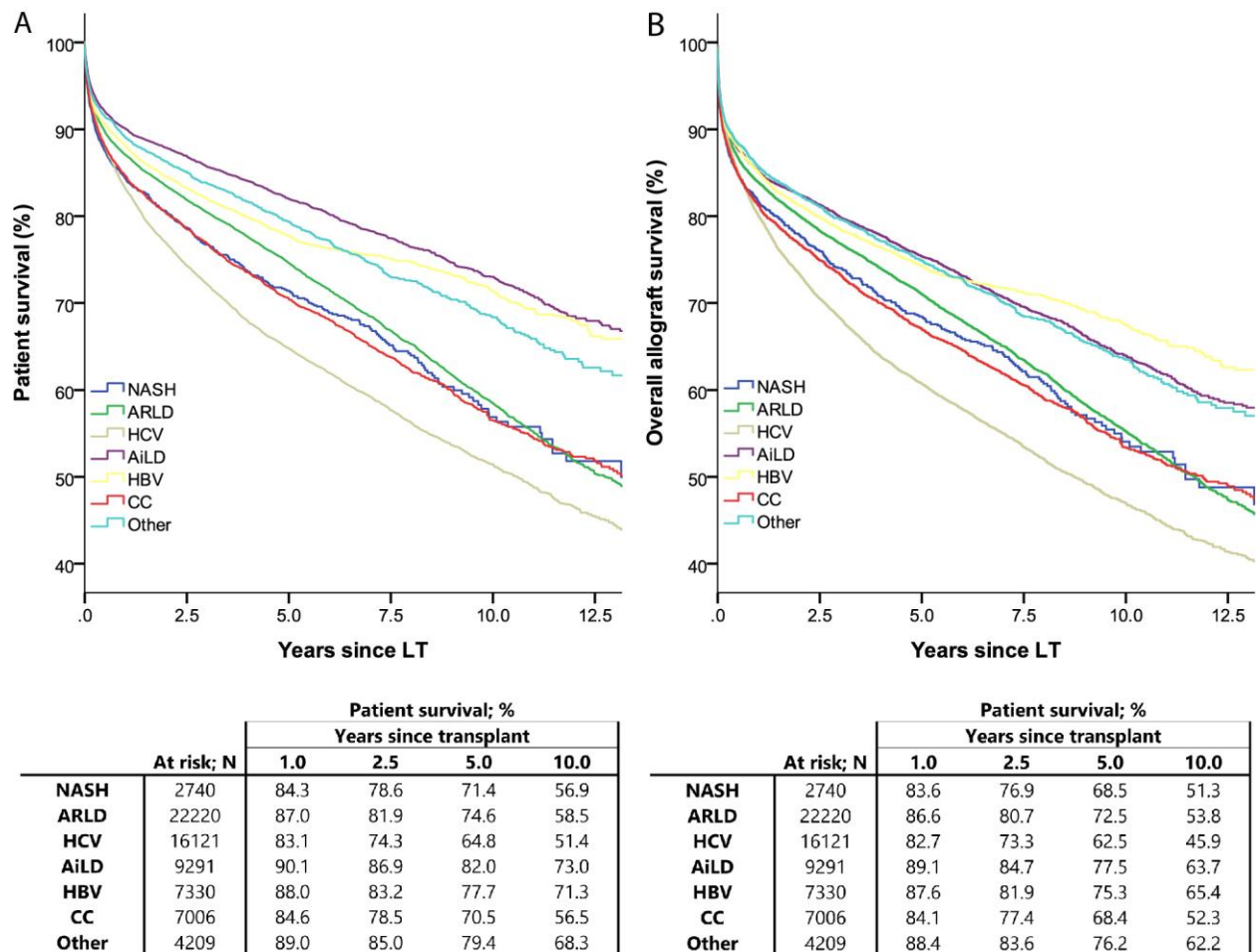


Fig. S2. Kaplan-Meier curves of patient survival (A) and overall allograft survival (B) analysis for all patients undergoing primary LT for different indications (log-rank: $P < 0.001$ for both).

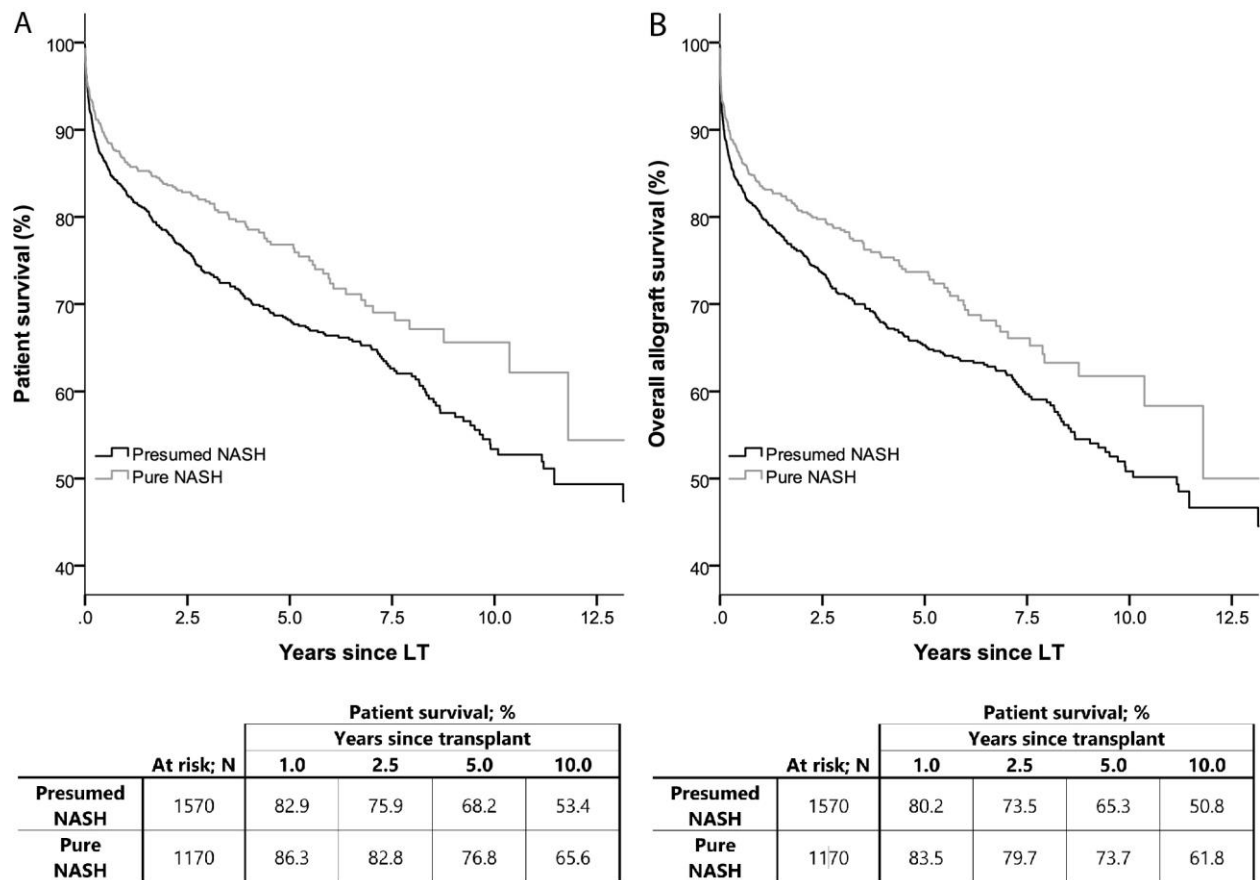


Fig. S3. Kaplan-Meier curves of patient survival (A) and overall allograft survival (B) analysis for patients with pure NASH and presumed NASH undergoing primary LT (log-rank: $P < 0.001$ for both).

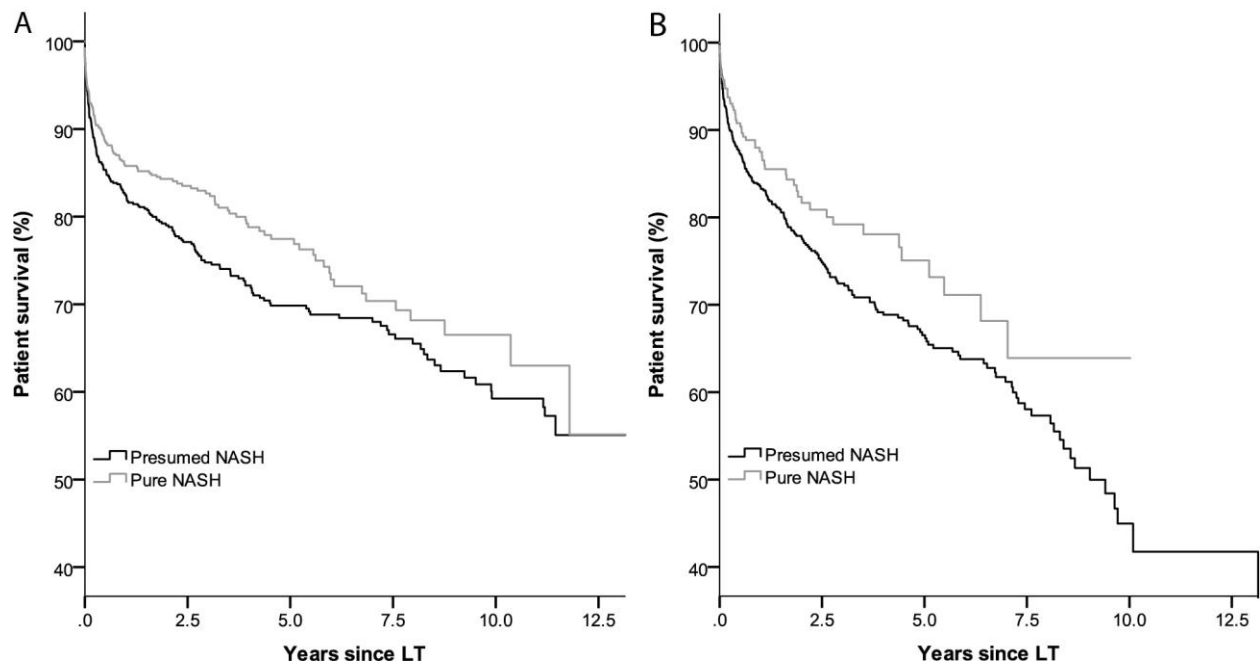


Fig. S4. Kaplan-Meier curves of patient survival comparing those transplanted for pure and presumed NASH stratified by the absence (A) and presence (B) of HCC (A: log-rank: $P=0.019$; B: log-rank $P=0.046$).

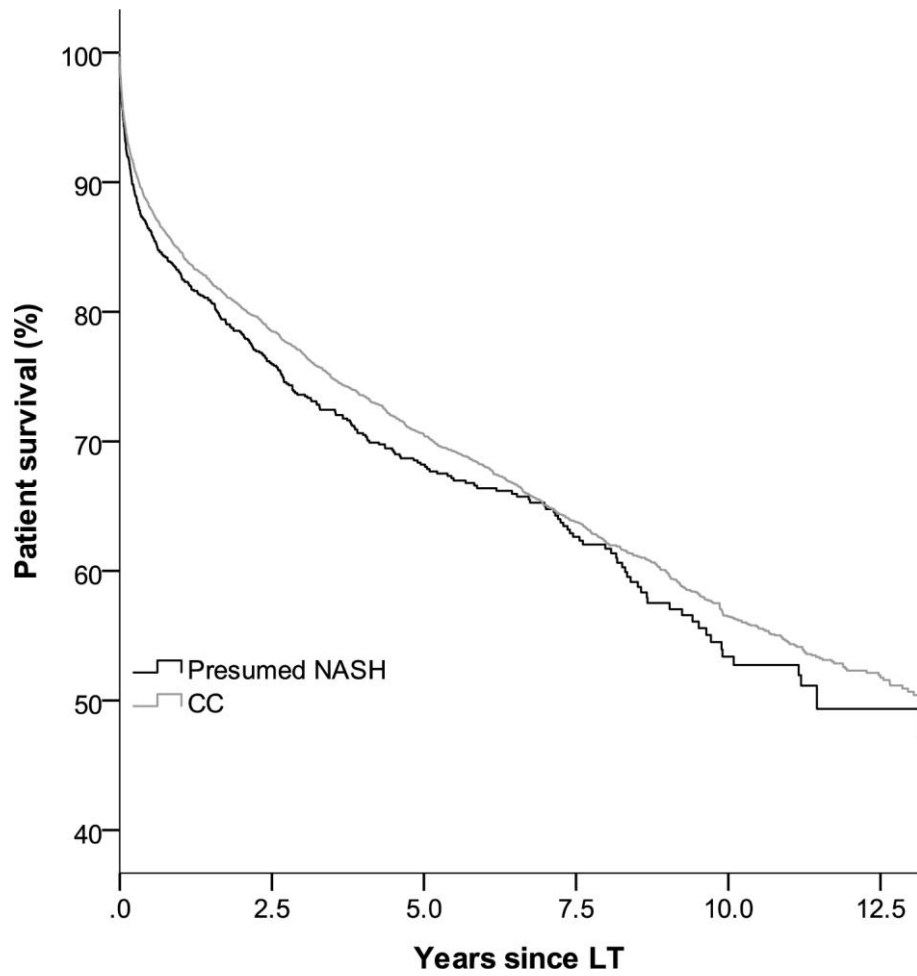


Fig. S5. Kaplan-Meier curves of patient survival comparing those transplanted for presumed NASH and those with CC (log-rank: $P=0.072$).

		Year of Transplant															
		2002	2003	2004	2005	2006	2007	2008	2009	2010	2011	2012	2013	2014	2015	2016*	Total
Indication for Transplant	NASH	45 (1.2)	53 (1.4)	44 (1.1)	72 (1.7)	106 (2.4)	132 (2.8)	175 (3.6)	178 (3.7)	205 (4.2)	219 (4.3)	232 (4.6)	274 (5.3)	331 (6.2)	343 (6.8)	332 (8.4)	2741
	ARLD	1135 (30.2)	1103 (29.8)	1246 (30.2)	1257 (29.4)	1297 (30.1)	1507 (32.5)	1540 (31.8)	1620 (33.8)	1611 (33.4)	1721 (33.7)	1713 (33.9)	1727 (33.5)	1717 (32.3)	1756 (34.6)	1276 (32.3)	22226
	HCV	994 (26.4)	1047 (28.2)	1077 (26.1)	1148 (26.8)	1110 (25.8)	1139 (24.5)	1184 (24.4)	1155 (24.1)	1106 (22.9)	1180 (23.1)	1111 (22.0)	1190 (23.1)	1176 (22.1)	977 (19.2)	533 (13.5)	16127
	AiLD	553 (14.7)	482 (13.0)	567 (13.7)	610 (14.2)	550 (12.8)	573 (12.4)	582 (12.0)	543 (11.4)	568 (11.8)	672 (13.1)	667 (13.2)	686 (13.3)	785 (14.7)	768 (15.1)	694 (17.6)	9300
	HBV	458 (12.2)	418 (11.3)	488 (11.8)	506 (11.8)	436 (10.1)	552 (11.9)	579 (12.0)	523 (10.9)	529 (10.9)	539 (10.5)	547 (10.8)	508 (9.9)	493 (9.3)	394 (7.8)	367 (9.3)	7337
	CC	342 (9.1)	361 (9.7)	442 (10.7)	462 (10.8)	563 (13.1)	462 (10.0)	469 (9.7)	505 (10.5)	509 (10.5)	477 (9.3)	463 (9.2)	466 (9.0)	486 (9.1)	525 (10.3)	477 (12.1)	7009
	Other	229 (6.1)	243 (6.6)	267 (6.4)	229 (5.3)	245 (5.7)	274 (5.9)	313 (6.5)	266 (5.6)	305 (6.3)	308 (6.0)	314 (6.2)	301 (5.9)	334 (6.3)	315 (6.2)	267 (6.8)	4210
	Total	3756	3707	4131	4284	4307	4639	4842	4790	4833	5116	5047	5152	5322	5078	3946	68950
	Pure NASH	7 (0.2)	7 (0.2)	11 (0.3)	18 (0.4)	28 (0.7)	26 (0.6)	40 (0.8)	56 (1.2)	66 (1.4)	106 (2.1)	98 (1.9)	144 (2.8)	186 (3.5)	194 (3.8)	184 (4.7)	1171
	Pres' NASH	38 (1.0)	46 (1.2)	33 (0.8)	54 (1.3)	78 (1.7)	106 (2.2)	135 (2.8)	122 (2.5)	139 (2.8)	113 (2.2)	134 (2.7)	130 (2.5)	145 (2.7)	149 (3.0)	148 (3.7)	1570

Table S1. Trends of annual primary LTs performed for different indications in the ELTR region. Both absolute numbers and percentages (in brackets) are reported. Additional figures for patients classified as “pure NASH” (patients coded as NASH in the ELTR) and “pres’ NASH” (presumed NASH = patients coded as cryptogenic cirrhosis with a BMI > 30kg.m⁻² in the ELTR) are also provided. *Data from 2016 is incomplete, as not all centres had entered data on to ELTR at the time of collection

	Odds ratio of receiving a DCD organ	
	OR (95% CI)	<i>P</i>
NASH	1.53 (0.21-11.11)	0.677
Era of transplant		<0.001
2002-2004	1.00	
2005-2007	2.12 (1.54-2.92)	<0.001
2008-2010	5.10 (3.81-6.83)	<0.001
2011-2013	7.60 (5.72-10.10)	<0.001
2014-2016	12.18 (9.20-16.12)	<0.001
Era of transplant * NASH (interaction term)		0.765
2002-2004*NASH	1.00	
2005-2007*NASH	1.99 (0.24-16.25)	0.521
2008-2010*NASH	1.19 (0.57-9.07)	0.867
2011-2013*NASH	1.23 (0.17-9.19)	0.839
2014-2016*NASH	1.32 (0.18-9.71)	0.787

Table S2. Interaction analysis between NASH and era of transplant on the rate of DCD transplants. Binary logistic model: the interaction term (Era of transplant*NASH) tests whether the difference in the DCD rate between NASH and non-NASH varies with time. Bold *P*-values are significant at $P<0.05$

	Recipients without HCC			Recipients with HCC		
	NASH N=1667	Non-NASH N=47087	<i>P</i>	NASH N=1073	Non-NASH N=19122	<i>P</i>
RECIPIENT CHARACTERISTICS						
Age; years; <i>median (IQR)</i>	58 (51-63)	53 (46-59)	<0.001	61 (57-65)	58 (53-63)	<0.001
Sex: male; %	64.4	67.3	0.011	81.6	83.8	0.061
Blood group; %			0.875			0.076
A	43.8	43.3		43.2	44.3	
AB	5.8	5.8		5.9	5.1	
B	12.4	13.1		14.0	11.7	
O	38.0	37.8		37.0	38.9	
BMI; kg.m ⁻² ; <i>mean (SD)</i>	32.6 (4.91)	25.6 (4.57)	<0.001	32.6 (4.98)	26.4 (4.05)	<0.001
MELD; <i>median (IQR)</i>	18 (14-23)	18 (13-26)	0.019	13 (9-17)	12 (9-16)	0.016
DONOR CHARACTERISTICS						
Age; <i>median (IQR)</i>	51 (38-62)	50 (36-63)	0.522	55 (41-68)	55 (44-67)	0.553
Sex: male; %	61.1	57.1	0.001	64.2	58.7	<0.001
Blood group; %			0.170			0.229
A	41.9	42.4		41.7	43.3	
AB	4.4	4.3		4.7	3.9	
B	10.4	12.0		12.5	11.0	
O	43.4	41.3		41.1	41.7	
BMI; kg.m ⁻² ; <i>mean (SD)</i>	26.8 (4.70)	25.4 (4.26)	<0.001	27.1 (4.96)	25.7 (4.38)	<0.001
Type of donor; %			<0.001			<0.001
DBD	82.4	90.4		88.0	90.3	
DCD	6.1	2.5		7.3	2.8	
Domino	0.5	0.7		1.2	1.6	
Living	10.9	6.4		3.5	5.2	

Table S3. Donor and recipient factors in patients transplanted for NASH and non-NASH indications described by the absence or presence of concomitant HCC. Bold

P-values are significant at $P<0.05$

	Univariable	Multivariable
	HR (95% CI)	HR (95% CI)
RECIPIENT CHARACTERISTICS		
NASH (vs non-NASH)	1.09 (0.97-1.23)	1.10 (0.97-1.24)
Cirrhosis aetiology	Overall**	n/a
NASH	1.00	
ARLD	0.87 (0.76-0.99)*	
HCV	1.07 (0.94-1.21)	
AiLD	0.76 (0.58-0.98)*	
HBV	0.68 (0.59-0.79)**	
CC	0.93 (0.81-1.06)	
Other	0.74 (0.62-0.88)*	
Age (years)	Overall**	Overall**
</=45	1.00	1.00
46-55	1.14 (1.01-1.29)*	1.18 (1.05-1.34)*
56-60	1.27 (1.13-1.44)**	1.33 (1.18-1.51)**
61-65	1.42 (1.26-1.60)*	1.51 (1.33-1.70)**
>65	1.52 (1.34-1.73)*	1.67 (1.46-1.91)**
Sex: male	0.97 (0.90-1.04)	not in final model
MELD	Overall**	Overall**
≤11	1.00	1.00
>11, ≤14	0.93 (0.84-1.02)	0.94 (0.85-1.03)
>14, ≤18	0.94 (0.85-1.03)	0.93 (0.85-1.03)
>18, ≤23	1.03 (0.92-1.16)	1.04 (0.92-1.17)
>23	1.40 (1.24-1.59)**	1.41 (1.25-1.60)**
Missing value	1.17 (1.09-1.25)**	1.24 (1.14-1.36)**
Blood group	Overall	not in final model
A	1.00	
AB	0.94 (0.83-1.06)	
B	0.95 (0.97-1.04)	
O	1.02 (0.96-1.08)	
BMI (kg.m⁻²)	Overall	not in final model
≤18.5	1.11 (0.81-1.51)	
>18.5, ≤25.0	1.00	
>25.0, ≤30.0	0.97 (0.89-1.05)	
>30.0, ≤35.0	1.02 (0.93-1.14)	
>35.0, ≤40.0	0.90 (0.74-1.10)	
>40.0	1.13 (0.77-1.67)	
Missing value	1.01 (0.94-1.09)	
DONOR CHARACTERISTICS		
Age (years)	Overall**	Overall**
</=34	1.00	1.00
35-47	1.03 (0.94-1.13)	1.03 (0.94-1.13)
48-57	1.09 (1.00-1.19)	1.10 (1.00-1.20)*
58-67	1.17 (1.07-1.27)**	1.18 (1.07-1.29)*

>68	1.19 (1.09-1.29)**	1.19 (1.09-1.30)**
Sex: male	0.95 (0.90-1.00)	not in final model
Blood group	Overall	not in final model
A	1.00	
AB	0.90 (0.78-1.04)	
B	0.96 (0.88-1.05)	
O	1.02 (0.97-1.08)	
BMI (kg.m⁻²)	Overall	Overall**
≤18.5	1.01 (0.82-1.26)	0.99 (0.79-1.24)
>18.5, ≤25.0	1.00	1.00
>25.0, ≤30.0	1.07 (0.99-1.14)	1.06 (0.99-1.14)
>30.0, ≤35.0	1.13 (1.01-1.26)*	1.13 (1.01-1.27)*
>35.0, ≤40.0	1.23 (1.00-1.51)*	1.28 (1.04-1.58)*
>40.0	1.05 (0.75-1.47)	1.11 (0.79-1.57)
Missing value	1.02 (0.95-1.09)	0.94 (0.87-1.01)
Type of donor	Overall**	Overall**
DBD	1.00	1.00
DCD	1.01 (0.85-1.20)	1.09 (0.91-1.29)
Domino	1.08 (0.89-1.31)	1.09 (0.90-1.32)
Living	1.25 (1.11-1.40)**	1.45 (1.28-1.64)**
OTHER SIGNIFICANT VARIABLES		
Re-transplant	1.78 (1.63-1.95)**	1.81 (1.65-1.98)**
Era of transplant	Overall**	Overall*
2002-2004	1.00	1.00
2005-2007	1.00 (0.93-1.08)	1.05 (0.96-1.13)
2008-2010	0.95 (0.87-1.03)	1.02 (0.93-1.11)
2011-2013	0.85 (0.78-0.93)**	0.93 (0.84-1.04)
2014-2016	0.77 (0.68-0.86)**	0.84 (0.73-0.95)*

Table S4. Recipient and donor factors that influence patient survival in transplant recipients with HCC. The final multivariable models were based on 19,514 patients.

* $P < 0.05$; ** $P < 0.001$

	Patient survival				Overall allograft survival			
	Univariable		Multivariable		Univariable		Multivariable	
	HR (95% CI)	P	HR (95% CI)	P	HR (95% CI)	P	HR (95% CI)	P
RECIPIENT CHARACTERISTICS								
NASH (vs non-NASH)	1.12 (1.04-1.22)	0.005	1.02 (0.93-1.11)	0.713	1.06 (0.98-1.14)	0.132	0.99 (0.91-1.08)	0.815
Aetiology of cirrhosis		<0.001				<0.001		
NASH	1.00				1.00			
ARLD	0.89 (0.82-0.97)	0.006			0.92 (0.85-0.99)	0.034		
HCV	1.19 (1.09-1.29)	<0.001	n/a		1.21 (1.12-1.31)	<0.001	n/a	
AiLD	0.58 (0.53-0.63)	<0.001			0.75 (0.69-0.81)	<0.001		
HBV	0.68 (0.62-0.75)	<0.001			0.73 (0.67-0.80)	<0.001		
CC	0.99 (0.91-1.09)	0.890			1.02 (0.93-1.11)	0.732		
Other	0.68 (0.61-0.76)	<0.001			0.76 (0.69-0.83)	<0.001		
Age (years)		<0.001		<0.001		<0.001		<0.001
<=45	1.00		1.00		1.00		1.00	
46-55	1.26 (1.20-1.32)	<0.001	1.25 (1.19-1.32)	<0.001	1.13 (1.08-1.17)	<0.001	1.08 (1.04-1.13)	<0.001
56-60	1.48 (1.41-1.56)	<0.001	1.48 (1.41-1.56)	<0.001	1.24 (1.19-1.30)	<0.001	1.18 (1.13-1.24)	<0.001
61-65	1.73 (1.65-1.82)	<0.001	1.72 (1.63-1.82)	<0.001	1.39 (1.33-1.46)	<0.001	1.31 (1.25-1.37)	<0.001
>65	1.90 (1.78-2.01)	<0.001	1.94 (1.82-2.07)	<0.001	1.49 (1.41-1.58)	<0.001	1.42 (1.34-1.51)	<0.001
Sex: male	1.12 (1.08-1.16)	<0.001	1.08 (1.04-1.12)	<0.001	1.09 (1.06-1.13)	<0.001	1.07 (1.03-1.10)	<0.001
MELD		<0.001		<0.001		<0.001		<0.001
<=11	1.00		1.00		1.00		1.00	
>11, <=14	0.90 (0.85-0.96)	0.002	0.96 (0.90-1.03)	0.230	0.91 (0.86-0.97)	0.003	0.95 (0.90-1.01)	0.091
>14, <=18	0.90 (0.85-0.96)	<0.001	1.00 (0.94-1.06)	0.913	0.91 (0.86-0.96)	<0.001	0.97 (0.92-1.03)	0.270
>18, <=23	0.91 (0.86-0.97)	0.005	1.05 (1.05-1.12)	0.164	0.90 (0.85-0.95)	<0.001	0.98 (0.92-1.04)	0.438
>23	1.30 (1.23-1.38)	<0.001	1.52 (1.52-1.62)	<0.001	1.24 (1.17-1.30)	<0.001	1.36 (1.29-1.44)	<0.001
Missing value	1.08 (1.03-1.13)	0.002	1.24 (1.24-1.32)	<0.001	1.06 (1.01-1.11)	0.010	1.25 (1.18-1.32)	<0.001
Blood group		0.393				0.763		0.012
A	1.00				1.00		1.00	
AB	0.96 (0.90-1.03)	0.246	not in final model		0.97 (0.91-1.04)	0.385	1.18 (1.05-1.33)	0.008
B	0.98 (0.93-1.02)	0.304			0.98 (0.94-1.03)	0.480	1.07 (0.95-1.22)	0.262
O	1.01 (0.97-1.04)	0.705			1.00 (0.97-1.03)	0.905	0.96 (0.88-1.06)	0.417
BMI (kg.m²)		0.002		<0.001		0.005		<0.001
<=18.5	1.15 (1.03-1.29)	0.017	1.30 (1.16-1.47)	<0.001	1.17 (1.05-1.30)	0.005	1.29 (1.15-1.44)	<0.001
>18.5, <=25.0	1.00		1.00		1.00		1.00	
>25.0, <=30.0	1.01 (0.97-1.06)	0.608	0.95 (0.91-0.99)	0.023	0.98 (0.94-1.02)	0.359	0.93 (0.89-0.97)	0.001
>30.0, <=35.0	1.09 (1.03-1.15)	0.003	1.02 (0.96-1.08)	0.582	1.03 (0.98-1.09)	0.232	0.99 (0.93-1.04)	0.601
>35.0, <=40.0	1.04 (0.94-1.16)	0.460	0.99 (0.89-1.11)	0.894	0.96 (0.87-1.06)	0.417	0.93 (0.84-1.03)	0.137
>40.0	1.30 (1.08-1.57)	0.005	1.26 (1.06-1.55)	0.010	1.21 (1.01-1.44)	0.038	1.19 (1.00-1.42)	0.056
Missing value	1.04 (1.00-1.08)	0.068	1.00 (0.94-1.05)	0.889	0.99 (0.95-1.02)	0.410	0.94 (0.89-0.99)	0.021
HCC	1.25 (1.21-1.29)	<0.001	1.18 (1.14-1.22)	<0.001	1.17 (1.14-1.21)	<0.001	1.13 (1.09-1.17)	<0.001
DONOR CHARACTERISTICS								
Age (years)		<0.001		<0.001		<0.001		<0.001
<=34	1.00		1.00		1.00		1.00	
35-47	1.15 (1.10-1.21)	<0.001	1.12 (1.07-1.18)	<0.001	1.16 (1.11-1.22)	<0.001	1.14 (1.09-1.20)	<0.001
48-57	1.24 (1.19-1.30)	<0.001	1.21 (1.15-1.27)	<0.001	1.26 (1.21-1.32)	<0.001	1.26 (1.20-1.32)	<0.001
58-67	1.39 (1.32-1.45)	<0.001	1.32 (1.26-1.39)	<0.001	1.40 (1.34-1.47)	<0.001	1.39 (1.33-1.46)	<0.001
>68	1.51 (1.44-1.58)	<0.001	1.40 (1.33-1.48)	<0.001	1.54 (1.47-1.61)	<0.001	1.53 (1.46-1.60)	<0.001
Sex: male	0.98 (0.95-1.01)	0.221	not in final model		0.97 (0.94-0.99)	0.031	not in final model	
Blood group		0.314				0.027		0.010
A	1.00				1.00		1.00	
AB	0.91 (0.84-0.98)	0.014	not in final model		0.91 (0.85-0.98)	0.017	0.82 (0.72-0.95)	0.006
B	0.96 (0.91-1.01)	0.091			0.97 (0.92-1.01)	0.149	0.93 (0.81-1.05)	0.238
O	1.02 (0.99-1.05)	0.272			1.01 (0.98-1.04)	0.590	1.04 (0.95-1.14)	0.421
BMI (kg.m²)		<0.001		<0.001		<0.001		<0.001

≤18.5	0.94 (0.84-1.06)	0.317	0.92 (0.82-1.06)	0.263	0.97 (0.87-1.08)	0.566	0.97 (0.86-1.09)	0.559
>18.5, ≤25.0	1.00		1.00		1.00		1.00	
>25.0, ≤30.0	1.09 (1.05-1.13)	<0.001	1.03 (0.99-1.08)	0.114	1.11 (1.11-1.07)	<0.001	1.06 (1.02-1.10)	0.004
>30.0, ≤35.0	1.11 (1.04-1.18)	0.001	1.05 (0.99-1.13)	0.111	1.11 (1.04-1.18)	0.001	1.06 (1.00-1.13)	0.044
>35.0, ≤40.0	1.15 (1.02-1.30)	0.022	1.10 (0.98-1.25)	0.106	1.12 (1.00-1.26)	0.049	1.10 (0.98-1.23)	0.126
>40.0	0.95 (0.77-1.16)	0.616	0.92 (0.76-1.14)	0.475	0.94 (0.78-1.14)	0.530	0.93 (0.77-1.13)	0.467
Missing value	0.96 (0.93-0.99)	0.037	0.89 (0.85-0.94)	<0.001	0.94 (0.91-0.98)	0.001	0.87 (0.83-0.91)	<0.001
Type of donor		<0.001		<0.001		<0.001		<0.001
DBD	1.00		1.00		1.00		1.00	
DCD	0.80 (0.71-0.89)	<0.001	0.85 (0.76-0.96)	0.006	0.98 (0.89-1.08)	0.719	1.07 (0.97-1.18)	0.191
Domino	1.19 (1.05-1.36)	0.009	1.14 (1.00-1.31)	0.052	1.20 (1.06-1.36)	0.005	1.24 (1.09-1.40)	0.001
Living	1.17 (1.10-1.25)	<0.001	1.47 (1.37-1.57)	<0.001	1.12 (1.06-1.19)	<0.001	1.36 (1.27-1.46)	<0.001
OTHER CHARACTERISTICS								
Re-transplant	1.74 (1.66-1.83)	<0.001	1.80 (1.72-1.89)	<0.001	n/a			
Era of transplant		<0.001		<0.001		<0.001		<0.001
2002-2004	1.00		1.00		1.00		1.00	
2005-2007	1.05 (1.01-1.10)	0.019	1.04 (0.99-1.09)	0.063	1.04 (1.00-1.09)	0.042	1.04 (0.99-1.08)	0.088
2008-2010	1.10 (1.05-1.15)	<0.001	1.05 (1.00-1.11)	0.047	1.07 (1.03-1.12)	0.001	1.04 (0.99-1.09)	0.110
2011-2013	0.98 (0.98-1.03)	0.427	0.93 (0.88-0.99)	0.021	0.98 (0.94-1.03)	0.443	0.94 (0.89-0.99)	0.034
2014-2016	0.85 (0.85-0.91)	<0.001	0.82 (0.76-0.88)	<0.001	0.87 (0.84-0.94)	<0.001	0.85 (0.80-0.91)	<0.001

Table S5. Recipient and donor factors that influence patient and overall allograft survival in all primary transplant recipients. Missing values were treated as a separate category for MELD, recipient BMI and donor BMI. Significant determinants of were analysed by univariable Cox regression, and independent predictors were sought in a multivariable Cox regression model with a backwards stepwise approach. NASH was not selected for inclusion in the final regression models, and so was entered into models alongside the factors identified as significant. The final multivariable models were based on 66,672 patients for patient survival, and 66,491 patients for graft survival. Bold *P* values are significant at $P<0.05$.

	Recipients without HCC				Recipients with HCC			
	Univariable		Multivariable		Univariable		Multivariable	
	HR (95% CI)	P	HR (95% CI)	P	HR (95% CI)	P	HR (95% CI)	P
RECIPIENT CHARACTERISTICS								
NASH (vs non-NASH)	1.06 (0.96-1.17)	0.082	0.98 (0.88-1.09)	0.644	1.02 (0.91-1.15)	0.156	1.02 (0.90-1.15)	0.797
Aetiology of cirrhosis		<0.001				<0.001		
NASH	1.00		n/a		1.00		n/a	
ARLD	0.95 (0.86-1.05)	0.291			0.93 (0.82-1.05)	0.240		
HCV	1.27 (1.14-1.40)	<0.001			1.14 (1.01-1.28)	0.040		
AiLD	0.78 (0.70-0.86)	<0.001			0.88 (0.69-1.11)	0.278		
HBV	0.72 (0.64-0.80)	<0.001			0.75 (0.65-0.86)	<0.001		
CC	1.01 (0.90-1.13)	0.892			0.99 (0.87-1.12)	0.842		
Other	0.76 (0.67-0.85)	<0.001			0.82 (0.70-0.98)	0.025		
Age (years)		<0.001		<0.001		<0.001		<0.001
<=45	1.00		1.00		1.00		1.00	
46-55	1.10 (1.05-1.16)	<0.001	1.07 (1.02-1.12)	0.009	1.08 (0.97-1.21)	0.167	1.09 (0.98-1.22)	0.126
56-60	1.23 (1.17-1.29)	<0.001	1.18 (1.12-1.25)	<0.001	1.14 (1.02-1.27)	0.024	1.14 (1.02-1.28)	0.023
61-65	1.40 (1.32-1.48)	<0.001	1.33 (1.26-1.41)	<0.001	1.22 (1.10-1.37)	<0.001	1.22 (1.09-1.37)	<0.001
>65	1.53 (1.43-1.64)	<0.001	1.48 (1.38-1.59)	<0.001	1.28 (1.13-1.44)	<0.001	1.30 (1.15-1.47)	<0.001
Sex: male	1.10 (1.06-1.14)	<0.001	1.09 (1.05-1.13)	<0.001	0.97 (0.91-1.03)	0.324	not in final model	
MELD		<0.001		<0.001		<0.001		<0.001
≤11	1.00		1.00		1.00		1.00	
>11, ≤14	0.95 (0.87-1.03)	0.183	0.94 (0.87-1.02)	0.142	0.93 (0.85-1.02)	0.118	0.94 (0.85-1.02)	0.133
>14, ≤18	0.94 (0.87-1.01)	0.078	0.95 (0.88-1.02)	0.164	0.97 (0.89-1.05)	0.420	0.96 (0.88-1.05)	0.341
>18, ≤23	0.93 (0.86-1.00)	0.061	0.94 (0.87-1.02)	0.144	1.00 (0.89-1.11)	0.964	0.99 (0.89-1.11)	0.862
>23	1.31 (1.31-1.40)	<0.001	1.31 (1.22-1.40)	<0.001	1.37 (1.22-1.54)	<0.001	1.36 (1.21-1.54)	<0.001
Missing value	1.07 (1.07-1.15)	0.032	1.20 (1.11-1.30)	<0.001	1.15 (1.08-1.23)	<0.001	1.26 (1.15-1.37)	<0.001
Blood group		0.967		0.002		0.565	not in final model	
A	1.00		1.00		1.00			
AB	0.99 (0.92-1.07)	0.803	1.21 (1.05-1.40)	0.008	0.94 (0.83-1.06)	0.314		
B	0.99 (0.94-1.05)	0.817	1.13 (0.97-1.30)	0.109	0.97 (0.89-1.05)	0.477		
O	0.99 (0.96-1.03)	0.628	0.94 (0.84-1.05)	0.252	1.01 (0.96-1.07)	0.690		
BMI (kg.m⁻²)		0.001		<0.001		0.359	not in final model	
≤18.5	1.69 (1.04-1.31)	0.007	1.26 (1.12-1.42)	<0.001	1.28 (0.97-1.70)	0.084		
>18.5, ≤25.0	1.00		1.00		1.00			
>25.0, ≤30.0	0.97 (0.92-1.01)	0.166	0.92 (0.88-0.97)	0.001	0.98 (0.91-1.05)	0.540		
>30.0, ≤35.0	1.03 (0.96-1.09)	0.444	0.98 (0.92-1.05)	0.642	1.02 (0.93-1.12)	0.683		
>35.0, ≤40.0	0.98 (0.87-1.10)	0.770	0.96 (0.85-1.08)	0.450	0.89 (0.73-1.07)	0.210		
>40.0	1.25 (1.03-1.53)	0.025	1.25 (1.02-1.53)	0.029	1.03 (0.70-1.51)	0.884		
Missing value	0.96 (0.92-0.99)	0.031	0.94 (0.88-1.00)	0.047	1.02 (0.95-1.09)	0.623		
DONOR CHARACTERISTICS								
Age (years)		<0.001		<0.001		<0.001		<0.001
<=34	1.00		1.00		1.00		1.00	
35-47	1.20 (1.13-1.27)	<0.001	1.18 (1.11-1.24)	<0.001	1.05 (0.96-1.14)	0.275	1.05 (0.97-1.15)	0.237
48-57	1.31 (1.24-1.38)	<0.001	1.30 (1.23-1.37)	<0.001	1.13 (1.04-1.23)	0.004	1.16 (1.06-1.26)	0.001
58-67	1.46 (1.46-1.54)	<0.001	1.45 (1.37-1.53)	<0.001	1.22 (1.12-1.33)	<0.001	1.25 (1.15-1.37)	<0.001
>68	1.65 (1.65-1.74)	<0.001	1.65 (1.56-1.75)	<0.001	1.26 (1.16-1.36)	<0.001	1.31 (1.20-1.42)	<0.001
Sex: male	0.97 (0.94-1.00)	0.051	not in final model		0.97 (0.92-1.02)	0.178	not in final model	
Blood group		0.145		0.003		0.334	not in final model	
A	1.00		1.00		1.00			
AB	0.93 (0.85-1.01)	0.087	0.81 (0.69-0.96)	0.013	0.89 (0.78-1.02)	0.097		
B	0.96 (0.91-1.02)	0.175	0.88 (0.76-1.03)	0.109	0.99 (0.91-1.07)	0.749		
O	1.01 (0.97-1.04)	0.748	1.06 (0.95-1.19)	0.278	1.01 (0.96-1.07)	0.698		
BMI (kg.m⁻²)		<0.001		<0.001		0.281		0.001
≤18.5	0.94 (0.83-1.07)	0.364	0.94 (0.82-1.08)	0.400	1.05 (0.85-1.28)	0.667	1.03 (0.84-1.27)	0.781
>18.5, ≤25.0	1.00		1.00		1.00		1.00	
>25.0, ≤30.0	1.12 (1.08-1.17)	<0.001	1.05 (1.01-1.10)	0.018	1.07 (0.99-1.14)	0.065	1.05 (0.98-1.13)	0.160

>30.0, ≤35.0	1.11 (1.03-1.19)	0.006	1.05 (0.98-1.13)	0.161	1.09 (0.98-1.21)	0.114	1.07 (0.97-1.19)	0.192
>35.0, ≤40.0	1.10 (0.96-1.27)	0.176	1.06 (0.92-1.22)	0.432	1.14 (0.94-1.39)	0.189	1.16 (0.95-1.42)	0.151
>40.0	0.88 (0.69-1.11)	0.277	0.85 (0.67-1.08)	0.192	1.07 (0.78-1.47)	0.687	1.12 (0.81-1.53)	0.500
Missing value	0.91 (0.87-0.95)	<0.001	0.84 (0.80-0.89)	<0.001	1.00 (0.94-1.07)	0.961	0.89 (0.83-0.96)	0.002
Type of donor		0.001		<0.001		0.078		<0.001
DBD	1.00		1.00		1.00		1.00	
DCD	0.91 (0.81-1.02)	0.123	0.98 (0.87-1.11)	0.783	1.12 (0.96-1.30)	0.147	1.23 (1.05-1.43)	0.010
Domino	1.21 (1.02-1.44)	0.032	1.30 (1.08-1.55)	0.004	1.10 (0.92-1.32)	0.287	1.15 (0.96-1.38)	0.127
Living	1.12 (1.04-1.20)	0.003	1.37 (1.26-1.48)	<0.001	1.13 (1.00-1.26)	0.046	1.30 (1.15-1.47)	<0.001
OTHER VARIABLES								
Era of transplant		<0.001		<0.001		<0.001		0.012
2002-2004	1.00		1.00		1.00		1.00	
2005-2007	1.04 (0.99-1.09)	0.125	1.03 (0.98-1.08)	0.251	1.00 (0.93-1.08)	0.908	1.04 (0.96-1.12)	0.361
2008-2010	1.10 (1.04-1.15)	<0.001	1.04 (0.98-1.10)	0.166	0.96 (0.89-1.04)	0.293	1.02 (0.94-1.11)	0.646
2011-2013	1.00 (0.95-1.06)	0.970	0.93 (0.87-0.99)	0.029	0.88 (0.81-0.95)	0.002	0.96 (0.87-1.06)	0.416
2014-2016	0.90 (0.85-0.97)	<0.001	0.85 (0.78-0.91)	<0.001	0.81 (0.73-0.89)	<0.001	0.87 (0.77-0.98)	0.019

Table S6. Recipient and donor factors that influence overall allograft survival in transplant recipients. Missing values were treated as a separate category for MELD, recipient BMI and donor BMI. Determinants of graft survival were analysed by univariable Cox regression. Independent predictors were sought in a multivariable Cox regression model with a backwards stepwise approach. NASH was not selected for inclusion in the final regression models, and so was entered into models alongside the factors identified as significant. The final multivariable models were based on 47,040 patients for those without HCC, and 19,514 patients for those with HCC. Bold *P* values are significant at $P<0.05$

Causes of deaths in transplant recipients (without HCC)										
N; (%)	ARLD N=4664	HCV N=3022	AiLD N=1523	HBV N=77 0	CC N=98 0	Other N=645	Non-NASH cumulative N=11604	NASH N=35 9	HR (CI)	P
Infection	1011 (21.7)	629 (20.8)	347 (22.8)	179 (23.2)	197 (20.1)	149 (23.1)	2512 (21.6)	86 (24.0)	1.15 (0.92-1.42)	0.216
Cardio/cerebrovascular complication	417 (8.9)	245 (8.1)	104 (6.8)	54 (7.0)	61 (6.2)	56 (8.7)	937 (8.1)	19 (5.3)	0.70 (0.44-1.10)	0.123
Primary non-function or dysfunction	128 (2.7)	96 (3.2)	63 (4.1)	37 (4.8)	33 (3.4)	21 (3.3)	378 (3.3)	16 (4.5)	1.26 (0.77-2.08)	0.360
Rejection (acute or chronic)	111 (2.4)	73 (2.4)	49 (3.2)	22 (2.9)	30 (3.1)	17 (2.6)	302 (2.6)	14 (3.9)	1.69 (0.99-2.89)	0.055
Gastrointestinal complications	132 (2.8)	102 (3.4)	35 (2.3)	19 (2.5)	30 (3.1)	15 (2.3)	333 (2.9)	10 (2.8)	0.73 (0.32-1.64)	0.967
Malignancy – solid organ extrahepatic	603 (12.9)	122 (4.0)	101 (6.6)	52 (6.8)	42 (4.3)	37 (5.7)	957 (8.2)	9 (2.5)	0.41 (0.21-0.79)	0.008
Other liver complication	116 (2.5)	68 (2.3)	47 (3.1)	20 (2.6)	27 (2.8)	20 (3.1)	298 (2.6)	7 (1.9)	0.79 (0.37-1.67)	0.534
Biliary complications	93 (2.0)	55 (1.8)	46 (3.0)	28 (3.6)	14 (1.4)	10 (1.6)	246 (2.1)	6 (1.7)	0.84 (0.37-1.88)	0.663
Vascular complications	115 (2.5)	46 (1.5)	31 (2.0)	31 (4.0)	24 (2.4)	13 (2.0)	260 (2.2)	6 (1.7)	0.73 (0.32-1.64)	0.444
Malignancy – recurrence of HCC	55 (1.2)	66 (2.2)	42 (2.8)	19 (2.5)	16 (1.6)	7 (1.1)	205 (1.8)	6 (1.7)	1.11 (0.49-2.51)	0.798
Malignancy – lymphoproliferative	40 (0.9)	34 (1.1)	25 (1.6)	6 (0.8)	5 (0.5)	13 (2.0)	123 (1.1)	5 (1.4)	1.65 (0.67-4.03)	0.274
Intraoperative	49 (1.1)	39 (1.3)	16 (1.1)	13 (1.7)	10 (1.0)	9 (1.4)	136 (1.2)	5 (1.4)	1.06 (0.43-2.58)	0.902
Recurrence of 1° liver pathology (non-malignant)	190 (4.1)	651 (21.5)	42 (2.8)	28 (3.6)	12 (1.2)	12 (1.9)	935 (8.1)	2 (0.6)	0.08 (0.02-0.33)	<0.001
Other	146 (3.1)	112 (3.7)	45 (3.0)	35 (4.5)	44 (4.5)	24 (3.7)	406 (3.5)	9 (2.5)	0.76 (0.39-1.47)	0.418
Unknown	1458 (31.3)	684 (22.6)	530 (34.8)	227 (29.5)	435 (44.4)	242 (37.5)	3576 (30.8)	159 (44.3)	1.61 (1.38-1.89)	<0.001

Table S7. Causes of death in patients without HCC undergoing primary LT.

Univariable Cox regression models were used to compare cause-specific mortality rates between NASH and non-NASH recipients. Causes of death were grouped into 15 categories: 1) Intraoperative deaths; 2) Primary non- or dysfunction; 3) Vascular complications (hepatic artery/vein thrombosis, early portal vein thrombosis, outflow impairment); 4) Biliary complications; 5) Recurrence of primary non-malignant liver pathology; 6) Rejection; 7) Other liver complications (massive hemorrhagic necrosis, de-novo viral hepatitis, other); 8) Malignancy: HCC; 9) Malignancy: extra-hepatic solid organ; 10) Malignancy: lymphoproliferative; 11) Gastrointestinal complications (visceral

perforation, pancreatitis, other); 12) Infection; 13) Cardio/cerebrovascular complication (myocardial infarction, ischaemic stroke, intracranial hemorrhage, other); 14) Other (including any complication with an overall burden of <1% of deaths – kidney failure, venous thromboembolism, trauma, suicide, bone marrow depression, neurological complication, other); 15) Unknown. Causes of death listed in order of frequency in patients transplanted for NASH. Bold *P* values are significant at $P<0.05$.

Causes of deaths in transplant recipients (with HCC)										
N; (%)	ARLD N=1228	HCV N=2250	AiLD N=73	HBV N=609	CC N=1015	Other N=210	Non-NASH cumulative N=5385	NASH N=272	HR (CI)	P
Malignancy – recurrence of HCC	178 (14.5)	407 (18.1)	7 (9.6)	166 (27.3)	146 (14.4)	33 (15.7)	937 (17.4)	53 (19.5)	1.24 (0.94-1.64)	0.123
Infection	187 (15.2)	376 (16.7)	17 (23.3)	74 (12.2)	128 (12.6)	47 (22.4)	829 (15.4)	28 (10.3)	0.69 (0.47-1.00)	0.049
Malignancy – solid organ extrahepatic	216 (17.6)	146 (6.5)	6 (8.2)	48 (7.9)	126 (12.4)	22 (10.5)	564 (10.5)	18 (6.6)	0.77 (0.48-1.23)	0.277
Cardio/cerebrovascular complication	83 (6.8)	124 (5.5)	4 (5.5)	40 (6.6)	44 (4.3)	14 (6.7)	309 (5.7)	13 (4.8)	0.89 (0.51-1.56)	0.693
Other liver complication	16 (1.3)	29 (1.3)	1 (1.4)	12 (2.0)	17 (1.7)	5 (2.4)	80 (1.5)	11 (4.0)	2.76 (1.47-5.19)	0.002
Primary non-function or dysfunction	31 (2.5)	55 (2.4)	4 (5.5)	22 (3.6)	28 (2.8)	2 (1.0)	142 (2.6)	8 (2.9)	1.02 (0.50-2.08)	0.960
Gastrointestinal complications	34 (2.8)	49 (2.2)	2 (2.7)	19 (3.1)	24 (2.4)	5 (2.4)	133 (2.5)	7 (2.6)	1.11 (0.52-2.38)	0.788
Recurrence of 1° liver pathology (non-malignant)	85 (6.9)	468 (20.8)	3 (4.1)	32 (5.3)	63 (6.2)	6 (2.9)	657 (12.2)	6 (2.2)	0.21 (0.09-0.46)	<0.001
Vascular complications	22 (1.8)	44 (2.0)	1 (1.4)	13 (2.1)	15 (1.5)	4 (1.9)	99 (1.8)	4 (1.5)	0.76 (0.28-2.07)	0.596
Rejection (acute or chronic)	19 (1.5)	36 (1.6)	1 (1.4)	7 (1.1)	11 (1.1)	7 (3.3)	81 (1.5)	4 (1.5)	1.05 (0.38-2.86)	0.928
Malignancy – lymphoproliferative	11 (0.9)	25 (1.1)	3 (4.1)	10 (1.6)	3 (0.3)	4 (1.9)	56 (1.0)	3 (1.1)	1.28 (0.40-4.09)	0.681
Biliary complications	22 (1.8)	34 (1.5)	1 (1.4)	6 (1.0)	9 (0.9)	2 (1.0)	74 (1.4)	1 (0.4)	0.28 (0.04-2.01)	0.205
Intraoperative	9 (0.7)	24 (1.1)	0 (0.0)	4 (0.7)	10 (1.0)	0 (0.0)	47 (0.9)	2 (0.7)	0.79 (0.19-3.26)	0.748
Other	38 (3.1)	63 (2.8)	1 (1.4)	11 (1.8)	37 (3.6)	4 (1.9)	154 (2.9)	7 (2.6)	1.09 (0.48-2.47)	0.846
Unknown	277 (22.6)	370 (16.4)	22 (30.1)	145 (23.8)	354 (34.9)	55 (26.2)	1223 (22.7)	107 (39.3)	1.89 (1.55-2.30)	<0.001

Table S8. Causes of death in patients with HCC undergoing primary LT. Univariable

Cox regression models were used to compare cause-specific mortality rates between NASH and non-NASH recipients. Causes of death were grouped into 15 categories: 1) Intraoperative deaths; 2) Primary non- or dysfunction; 3) Vascular complications (hepatic artery/vein thrombosis, early portal vein thrombosis, outflow impairment); 4) Biliary complications; 5) Recurrence of primary non-malignant liver pathology; 6) Rejection; 7) Other liver complications (massive hemorrhagic necrosis, de-novo viral hepatitis, other); 8) Malignancy: HCC; 9) Malignancy: extra-hepatic solid organ; 10) Malignancy:

lymphoproliferative; 11) Gastrointestinal complications (visceral perforation, pancreatitis, other); 12) Infection; 13) Cardio/cerebrovascular complication (myocardial infarction, ischaemic stroke, intracranial hemorrhage, other); 14) Other (including any complication with an overall burden of <1% of deaths – kidney failure, venous thromboembolism, trauma, suicide, bone marrow depression, neurological complication, other); 15) Unknown. Causes of death listed in order of frequency in patients transplanted for NASH. Bold *P* values are significant at $P<0.05$.

	Univariable	Multivariable
	HR (95% CI)	
RECIPIENT CHARACTERISTICS		
Age (years)	Overall	
≤45	1.00	not in final model
46-55	1.94 (0.82-4.56)	
56-60	2.30 (1.00-5.29)	
61-65	2.20 (0.96-5.05)	
>65	2.85 (1.23-6.59)	
Sex: male	1.03 (0.76-1.40)	not in final model
MELD	Overall	
≤11	1.00	not in final model
>11, ≤14	0.59 (0.40-0.86)	
>14, ≤18	0.85 (0.61-1.18)	
>18, ≤23	0.88 (0.57-1.36)	
>23	1.23 (0.80-1.89)	
Missing value	0.75 (0.47-1.19)	
Blood group	Overall	
A	1.00	not in final model
AB	1.22 (0.75-1.98)	
B	0.85 (0.58-1.24)	
O	0.93 (0.72-1.22)	
BMI (kg.m⁻²)	Overall	
≤18.5	n/a	not in final model
>18.5, ≤25.0	1.94 (0.63-5.95)	
>25.0, ≤30.0	1.00	
>30.0, ≤35.0	1.98 (1.13-3.47)	
>35.0, ≤40.0	1.63 (0.87-3.06)	
>40.0	2.58 (1.15-5.75)	
Missing value	1.94 (0.63-5.95)	
DONOR CHARACTERISTICS		
Age (years)	Overall	
≤45	1.00	not in final model
46-55	1.26 (0.82-1.93)	
56-60	1.06 (0.71-1.60)	
61-65	1.15 (0.75-1.75)	
>65	1.33 (0.89-1.99)	
Sex: male	0.97 (0.76-1.24)	not in final model
Blood group	Overall	
A	1.00	not in final model
AB	1.28 (0.76-2.15)	
B	0.74 (0.49-1.12)	
O	0.96 (0.74-1.25)	
BMI (kg.m⁻²)	Overall	
≤18.5	1.23 (0.30-4.96)	not in final model

>18.5, ≤25.0	0.99 (0.75-1.30)	
>25.0, ≤30.0	1.00	
>30.0, ≤35.0	0.74 (0.49-1.12)	
>35.0, ≤40.0	1.14 (0.64-2.03)	
>40.0	1.85 (0.90-3.78)	
Missing value	0.66 (0.39-1.09)	
Type of donor	Overall	
DBD	1.00	not in final model
DCD	0.78 (0.45-1.34)	
Domino	0.77 (0.25-2.41)	
Living	1.54 (0.84-1.82)	
OTHER VARIABLES		
Era of transplant	Overall	
2002-2004	1.00	n/a
2005-2007	0.76 (0.43-1.32)	
2008-2010	1.05 (0.62-1.78)	
2011-2013	0.72 (0.41-1.26)	
2014-2016	0.56 (0.31-1.02)	

Table S9. Recipient and donor factors that significantly affect post-transplant survival in patients transplanted for NASH without HCC. The final multivariable models were based on 1,043 patients. * $P < 0.05$; ** $P < 0.001$

	Pure NASH N=1171	Presumed NASH N=1570	<i>P</i>
RECIPIENT CHARACTERISTICS			
Age; years; median (IQR)	60 (54-65)	59 (53-64)	<0.001
Sex: male; %	68.7	72.9	0.017
Blood group; %			0.002
A	43.6	43.5	
AB	4.0	7.2	
B	12.7	13.3	
O	39.7	36.0	
BMI; kg.m⁻²; mean (SD)	31.2 (5.2)	33.5 (3.8)	<0.001
MELD; median (IQR)	16 (13-21)	15 (11-21)	0.002
HCC; %	28.5	47.1	<0.001
DONOR CHARACTERISTICS			
Age; years; median (IQR)	53 (41-64)	52 (39-63)	0.139
Sex: male; %	59.9	64.1	0.030
Blood group; %			0.003
A	41.6	42.0	
AB	2.9	5.7	
B	10.9	11.5	
O	44.6	40.9	
BMI; kg.m⁻²; mean (SD)	26.8 (4.7)	27.0 (4.9)	0.719
Type of donor; %			<0.001
DBD	80.5	87.6	
DCD	12.1	2.5	
Domino	1.1	0.6	
Living	6.3	9.2	

Table S10. Donor and recipient factors in patients transplanted for pure NASH and presumed NASH. Comparisons between groups were performed using Mann-Whitney U tests, chi-squared tests and t-tests, as applicable, and bold *P*-values are significant at *P*<0.05.

	HCC N (%)
NASH	1073 (39.1)
ARLD	4717 (21.2)
HCV	7118 (44.1)
AiLD	320 (3.4)
HBV	2857 (38.9)
CC	3229 (46.1)
Other	881 (20.9)
Total	20195 (29.3)

Table S11. The prevalence of HCC in patients transplanted with liver disease of different aetiologies.

	Complete cases N=38,084	Cases with missing values* N=30,886	P
RECIPIENT CHARACTERISTICS			
Age; years; median (IQR)	55 (48-61)	55 (48-61)	<0.001
Sex: male; %	71.1	73.3	<0.001
Aetiology			<0.001
NASH	6.1	1.3	
ARLD	30.9	33.9	
HCV	17.7	30.4	
AiLD	15.2	11.4	
HBV	11.1	10.0	
CC	11.0	9.1	
Other	8.0	3.8	
Blood group; %			<0.001
A	43.2	44.1	
AB	6.0	5.2	
B	13.3	11.9	
O	37.5	38.8	
HCC; %	28.6	30.1	<0.001
DONOR CHARACTERISTICS			
Age; median (IQR)	52 (38-64)	52 (38-65)	0.241
Sex: male; %	56.7	59.1	<0.001
Blood group; %			0.001
A	42.1	43.3	
AB	4.3	4.2	
B	12.0	11.2	
O	41.6	41.2	
Type of donor; % **			<0.001
DBD	86.2	95.1	
DCD	4.7	0.3	
Domino	0.5	1.5	
Living	8.6	3.1	

Table S12. Comparison of donor and recipient factors in patients transplanted for NASH and non-NASH indications. *Missing data points in one of MELD, recipient BMI or donor BMI.

	Missing indicator analysis N = 47,040	Available case analysis N = 28,643
HR (95% CI)		
RECIPIENT CHARACTERISTICS		
NASH (vs non-NASH)	0.97 (0.86-1.09)	1.02 (0.90-1.16)
Age (years)	Overall**	Overall**
</=45	1.00	1.00
46-55	1.24 (1.18-1.31)**	1.37 (1.27-1.48)**
56-60	1.49 (1.41-1.59)**	1.63 (1.50-1.77)**
61-65	1.78 (1.67-1.89)**	1.99 (1.82-2.17)**
>65	2.04 (1.89-2.20)**	2.19 (1.97-2.42)**
Sex: male	1.11 (1.06-1.15)**	1.12 (1.06-1.18)**
MELD	Overall**	Overall**
≤11	1.00	1.00
>11, ≤14	0.98 (0.89-1.07)	0.97 (0.88-1.06)
>14, ≤18	1.02 (0.94-1.11)	1.01 (0.92-1.10)
>18, ≤23	1.05 (0.96-1.15)	1.05 (0.95-1.15)
>23	1.52 (1.40-1.64)**	1.54 (1.41-1.67)**
Missing value	1.22 (1.12-1.33)**	n/a
Blood group	Overall*	Overall*
A	1.00	1.00
AB	1.18 (1.01-1.38)*	1.27 (1.06-1.54)*
B	1.12 (0.95-1.31)	1.23 (1.01-1.50)*
O	0.94 (0.84-1.07)	1.05 (0.90-1.23)
BMI (kg.m⁻²)	Overall**	Overall**
≤18.5	1.34 (1.18-1.52)**	1.30 (1.13-1.51)**
>18.5, ≤25.0	1.00	1.00
>25.0, ≤30.0	0.95 (0.90-1.01)	0.95 (0.89-1.01)
>30.0, ≤35.0	1.04 (0.97-1.12)	1.02 (0.95-1.11)
>35.0, ≤40.0	1.06 (0.93-1.21)	1.01 (0.88-1.16)
>40.0	1.35 (1.09-1.67)*	1.38 (1.10-1.73)*
Missing value	1.04 (0.98-1.11)	n/a
DONOR CHARACTERISTICS		
Age (years)	Overall**	Overall**
</=34	1.00	1.00
35-47	1.16 (1.09-1.23)**	1.16 (1.07-1.26)**
48-57	1.25 (1.18-1.33)**	1.25 (1.15-1.36)**
58-67	1.38 (1.29-1.47)**	1.38 (1.26-1.50)**
>68	1.52 (1.43-1.62)**	1.54 (1.41-1.68)**
Sex: male	not in final model	not in final model
Blood group	Overall*	Overall*
A	1.00	1.00
AB	0.82 (0.68-0.97)*	0.75 (0.60-0.93)*
B	0.90 (0.76-1.06)	0.78 (0.64-0.96)*
O	1.07 (0.95-1.21)	0.96 (0.82-1.12)

BMI (kg.m⁻²)	Overall**	
≤18.5	0.91 (0.79-1.06)	not in final model
>18.5, ≤25.0	1.00	
>25.0, ≤30.0	1.02 (0.97-1.07)	
>30.0, ≤35.0	1.02 (0.94-1.11)	
>35.0, ≤40.0	1.02 (0.88-1.19)	
>40.0	0.85 (0.66-1.10)	
Missing value	0.85 (0.80-0.90)**	n/a
Type of donor	Overall**	Overall**
DBD	1.00	1.00
DCD	0.73 (0.62-0.85)**	0.73 (0.62-0.85)**
Domino	1.20 (0.99-1.45)	1.22 (0.88-1.68)
Living	1.43 (1.31-1.56)**	1.59 (1.44-1.76)**
OTHER VARIABLES		
Re-transplant	1.80 (1.71-1.91)**	1.95 (1.81-2.11)**
Era of transplant	Overall**	Overall**
2002-2004	1.00	1.00
2005-2007	1.03 (0.98-1.09)	1.18 (1.06-1.30)**
2008-2010	1.07 (1.00-1.13)*	1.20 (1.09-1.33)**
2011-2013	0.93 (0.87-0.99)*	1.03 (0.93-1.15)
2014-2016	0.81 (0.75-0.89)**	0.90 (0.80-1.01)*

Table S13. Multivariable analyses by different methods to determine recipient and donor factors that influence patient survival in transplant recipients without HCC.

* $P < 0.05$; ** $P < 0.001$

Missing indicator analysis N = 1,628	Available case analysis N = 1,493
--	---

RECIPIENT CHARACTERISTICS		
Age (years)	Overall**	Overall**
≤45	1.00	1.00
46-55	1.31 (0.87-1.98)	1.33 (0.87-2.04)
56-60	1.23 (0.81-1.87)	1.37 (0.89-2.12)
61-65	2.07 (1.39-3.08)**	2.20 (1.46-3.31)**
>65	1.72 (1.10-2.71)*	1.70 (1.07-2.71)*
Sex: male	0.79 (0.63-0.98)*	0.78 (0.62-0.98)*
MELD	Overall**	Overall**
≤11	1.00	1.00
>11, ≤14	1.03 (0.66-1.62)	1.03 (0.67-1.59)
>14, ≤18	0.66 (0.44-1.06)	0.66 (0.44-1.01)
>18, ≤23	0.71 (0.47-1.15)	0.71 (0.46-1.10)
>23	1.48 (1.04-2.30)*	1.49 (1.01-2.19)*
Missing value	0.93 (0.57-1.51)	n/a
Blood group	not in final model	not in final model
A		
AB		
B		
O		
BMI (kg.m⁻²)	Overall*	Overall*
≤18.5	4.29 (1.01-18.21)*	4.71 (1.11-20.11)*
>18.5, ≤25.0	2.24 (1.27-3.96)*	2.13 (1.99-3.80)*
>25.0, ≤30.0	1.00	1.00
>30.0, ≤35.0	1.38 (0.95-2.01)	1.34 (0.92-1.94)
>35.0, ≤40.0	1.43 (0.93-2.18)	1.30 (0.85-1.99)
>40.0	1.96 (1.16-3.32)*	1.82 (1.07-3.11)*
Missing value	1.13 (0.49-2.63)	n/a
DONOR CHARACTERISTICS		
Age (years)	not in final model	not in final model
≤45		
46-55		
56-60		
61-65		
>65		
Sex: male	not in final model	not in final model
Blood group	Overall*	Overall*
A	1.00	1.00
AB	0.99 (0.58-1.70)	1.20 (0.67-1.59)
B	0.37 (0.22-0.63)**	0.45 (0.27-0.75)**
O	1.06 (0.85-1.32)	1.06 (0.84-1.34)
BMI (kg.m⁻²)	not in final model	not in final model
≤18.5		

>18.5, ≤25.0		
>25.0, ≤30.0		
>30.0, ≤35.0		
>35.0, ≤40.0		
>40.0		
Missing value		
OTHER VARIABLES		
Type of donor		
DBD		
DCD	not in final model	not in final model
Domino		
Living		

Table S14. Multivariable analyses by different methods to determine recipient and donor factors that significantly affect post-transplant survival in patients transplanted for NASH without HCC. * $P < 0.05$; ** $P < 0.001$