

1 **Evaluation of reference genes for real-time quantitative PCR analysis in southern corn**
2 **rootworm, *Diabrotica undecimpunctata howardi* (Barber)**

3

4 Saumik Basu ^a, Adriano E. Pereira ^{a,*}, Daniele H. Pinheiro ^c, Haichuan Wang ^d, Arnubio Valencia-
5 Jiménez ^e, Blair D. Siegfried ^f, Joe Louis ^{a,b}, Xuguo ‘Joe’ Zhou ^g, and Ana Maria Vélez ^a

6 (Saumik Basu and Adriano E. Pereira contributed equally to the manuscript)

7

8 ^a Department of Entomology, University of Nebraska-Lincoln, Lincoln, NE 68583

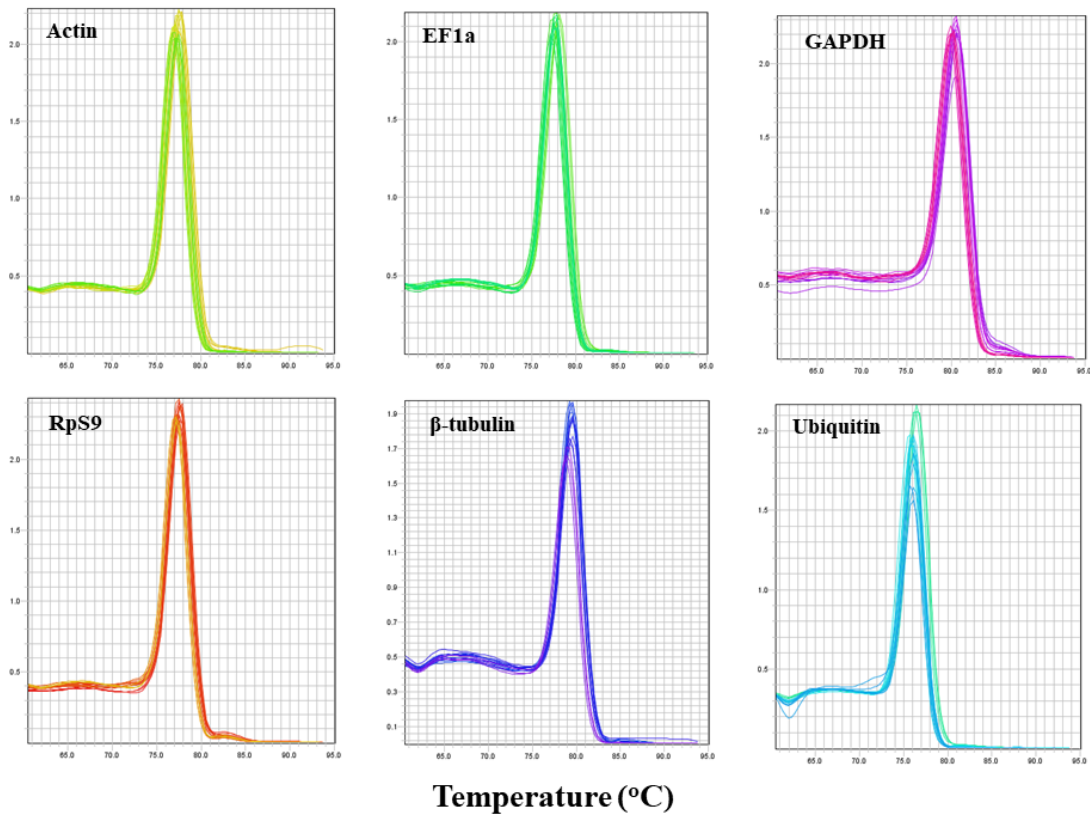
9 ^b Department of Biochemistry, University of Nebraska-Lincoln, Lincoln, NE 68583

10 ^c Federal University of Lavras, Lavras, MG, Brazil

11 ^d Department of Agronomy and Horticulture, University of Nebraska-Lincoln, Lincoln, NE, 68583-
12 0915

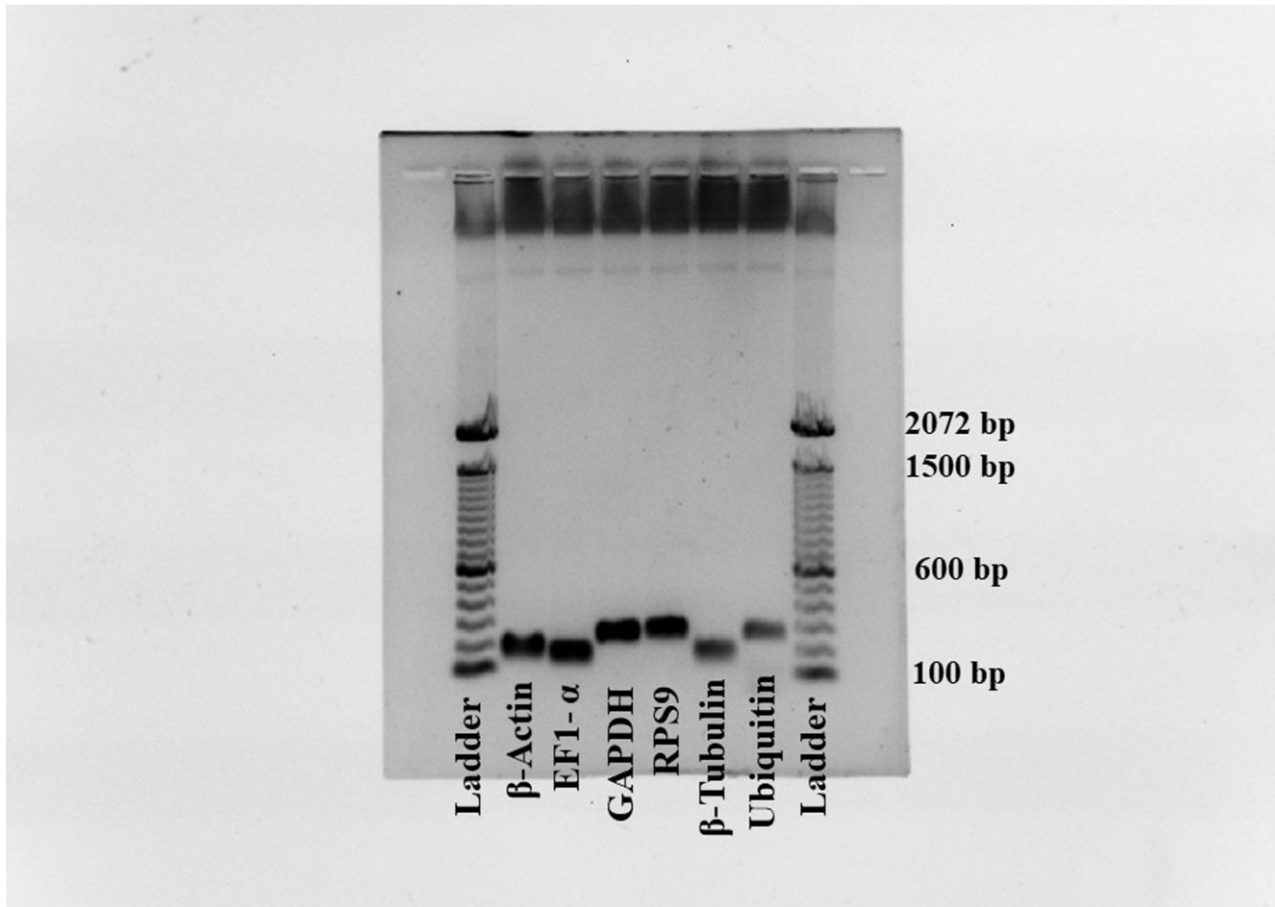
13

14 **Supporting information**



15

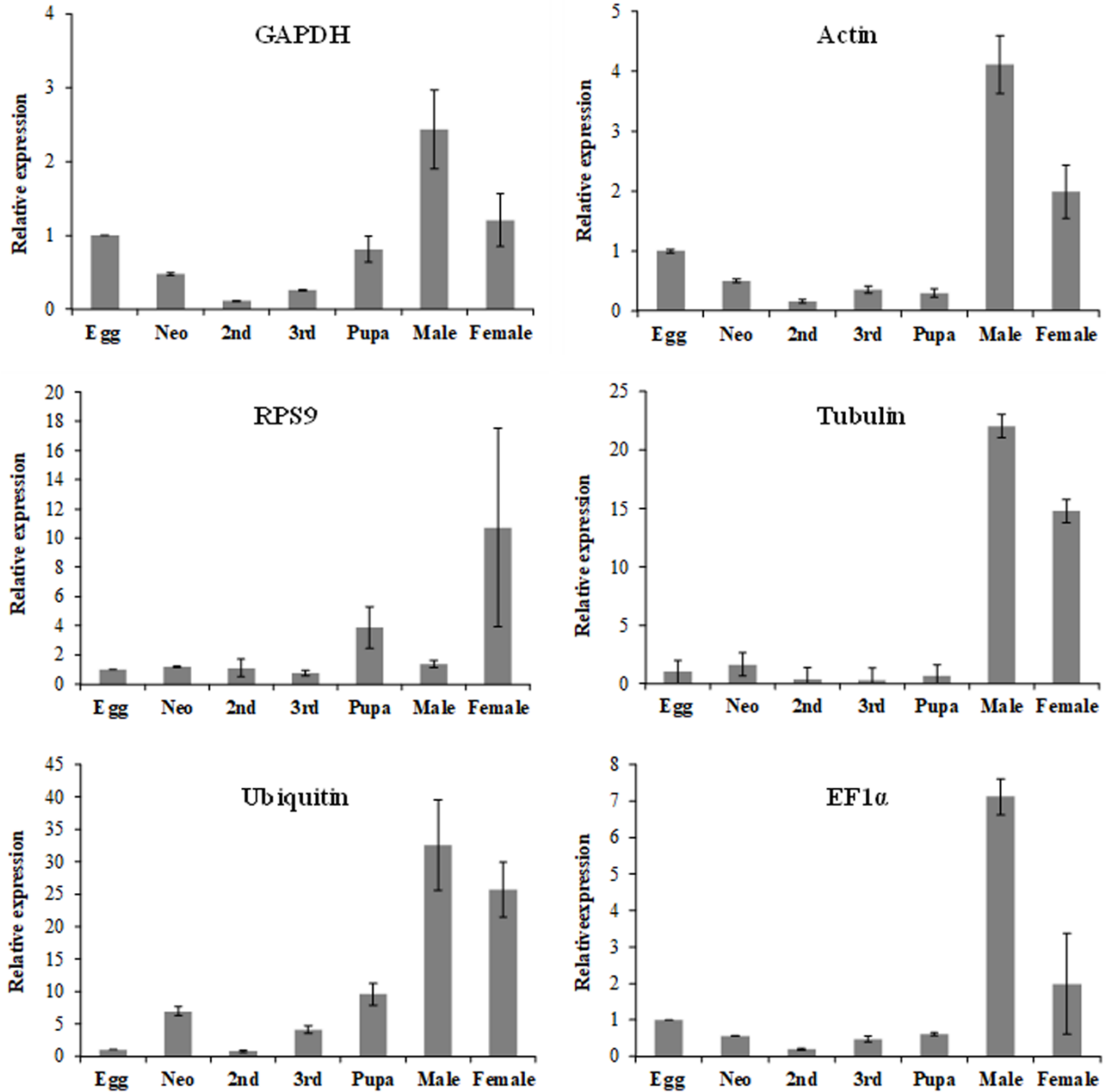
16 **Supplemental Figure 1.** Melting curve analyses showing the presence of single peak for the six
17 genes evaluated (*Actin*, *EF1 α* , *GAPDH*, *RpS9*, *Tubulin* and *Ubi*) in SCR which confirmed RT-
18 qPCR amplification by their specific primers.



20

21 **Supplemental Figure 2.** PCR amplification of six SCR HKGs, *Actin*, *EF1 α* , *GAPDH*, *RpS9*,22 *Tubulin* and *Ubi* using gene-specific primers.

23



24

25 **Supplemental Figure 3.** Relative gene expression of SCR HKGs *Actin*, *EF1α*, *GAPDH*, *RpS9*,

26 *Tubulin* and *Ubi* performed in the different life stages egg, neonate, second instar, third instar,

27 pupa, adult male and female, using RT-qPCR.

28

29