

Table S1. HER2^{a)} scoring methods proposed by ASCO/CAP^{b)}

Score	Description
3+	Circumferential membrane staining that is complete, intense, and in >10% of tumor cells
2+	Circumferential membrane staining that is incomplete and/or weak/moderate and in >10% of tumor cells or Complete and circumferential membrane staining that is intense and in <10% of tumor cells
1+	Incomplete membrane staining that is faint/barely perceptible and in >10% of tumor cells
0	No staining is observed or Membrane staining that is incomplete and is faint/barely perceptible and in <10% of tumor cells.

a) HER2: Human epidermal growth factor receptor 2

b) ASCO/CAP: American Society of Clinical Oncology/College of American Pathologists

Fig. S1. Human epidermal growth factor receptor 2 (HER2) scoring of canine anal sac gland carcinoma (ASGC) based on American Society of Clinical Oncology/College of American Pathologists. (A, B, C) Representative images of the staining pattern of HER2 in canine ASGC. Scale bar, 100 μ m. (D, E, F) Higher magnification of the representative images. Scale bar, 50 μ m.

Fig. S1.

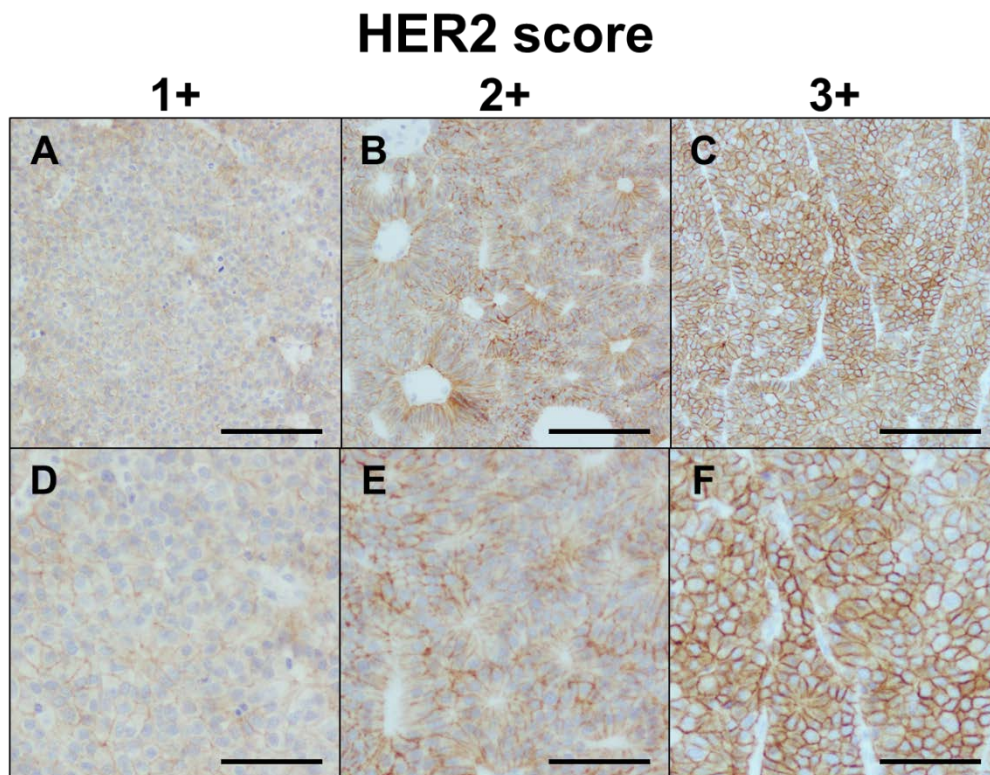


Fig. S2. Human epidermal growth factor receptor 2 (HER2) expression in canine normal anal tissues. (A) Representative images of the staining pattern of HER2 in canine normal anal sac tissues. Scale bar, 200 μm . (B, C) Higher magnification of the apocrine glands (B) and squamous epithelia (C). Scale bar, 100 μm .

