

Bias (mean error) and imprecision (root mean squared error) when the data was simulated with the Cosine model

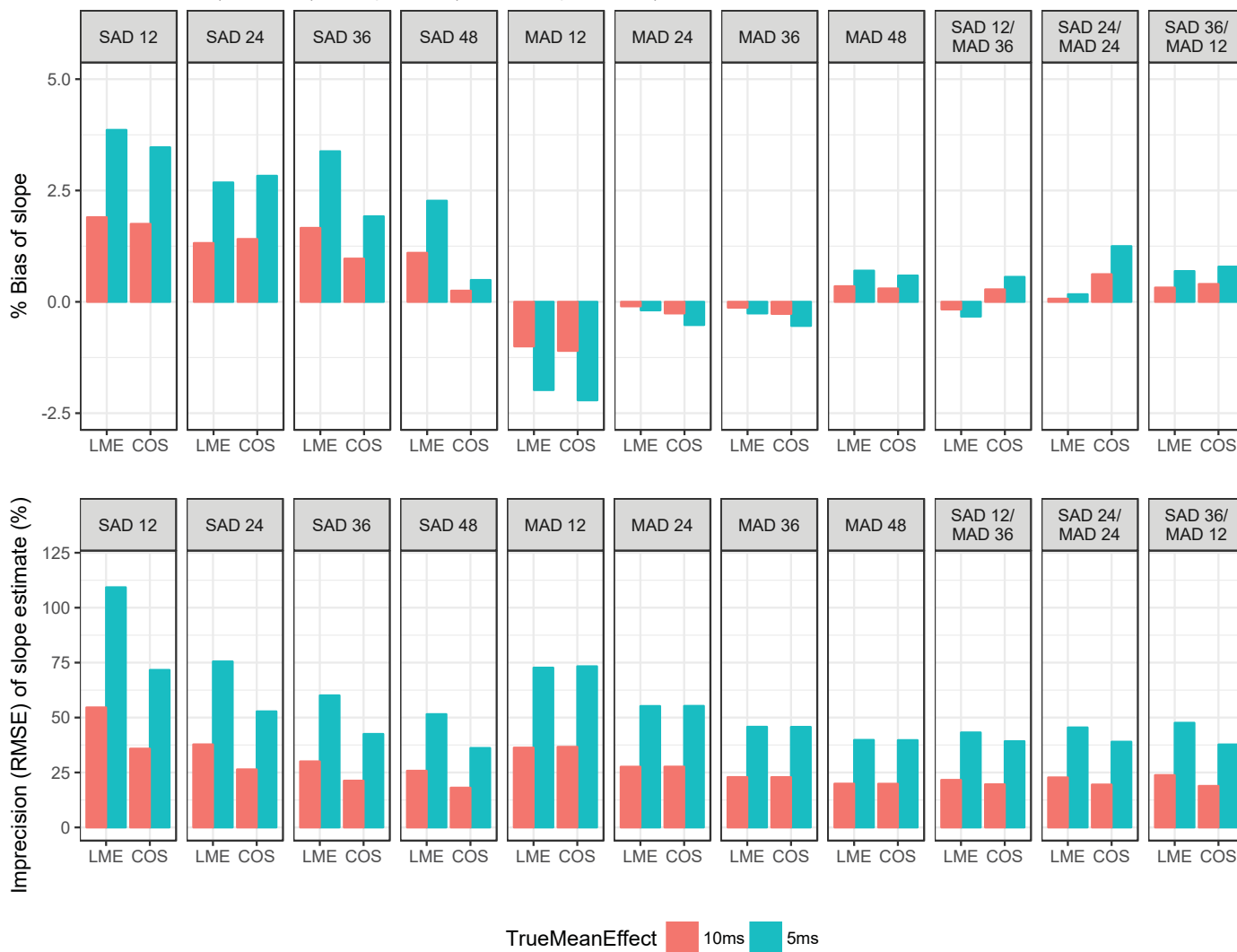


Figure S5: Bias (mean error) and imprecision (root mean squared error) when the data was simulated with the Cosine model (COS) and a true slope corresponding to an increase in QTcF of 5 or 10 ms at the Cmax following twice daily dosing of 2.4 mg. The labels on each panel indicate the design (single ascending dose [SAD] or multiple ascending dosing [MAD]) and the number of subjects.