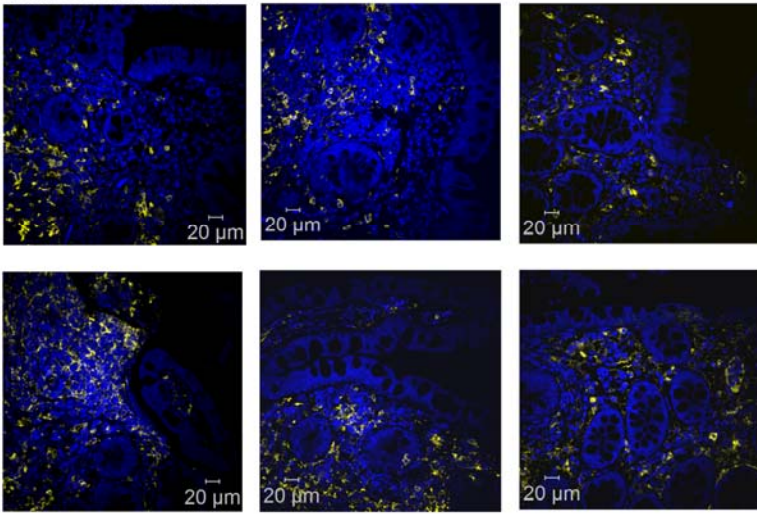
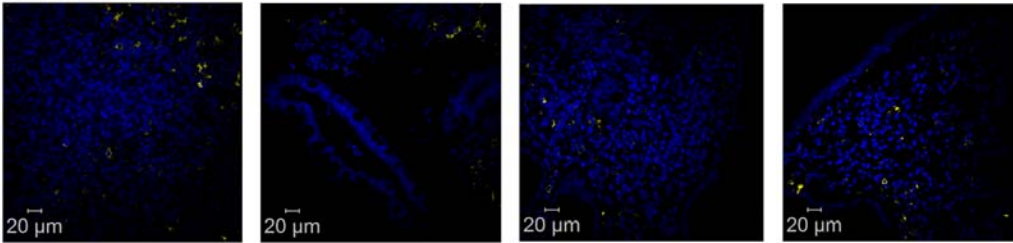


### Supplementary Figure 1

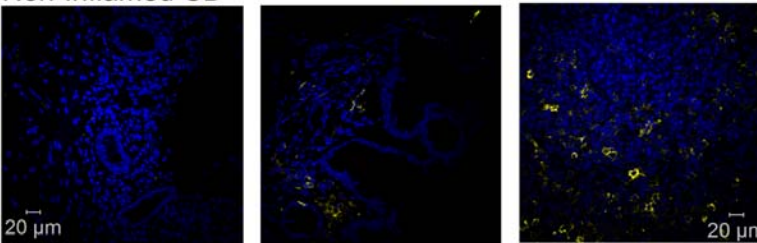
#### Non-CD Controls



#### Inflamed CD



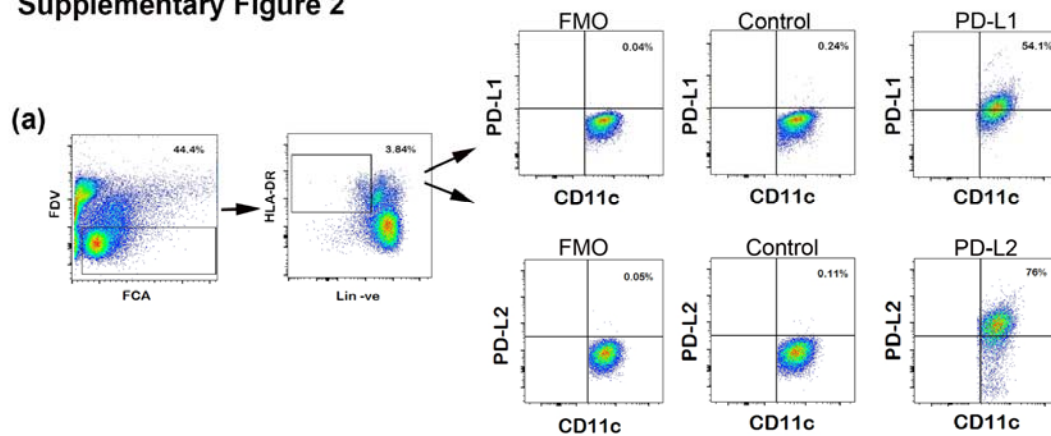
#### Non-Inflamed CD



### Supplementary Figure 1: Loss of DCs in the ileum during CD.

Additional representative examples of ileal tissue labelled for CD11c (yellow) and DAPI (blue) from control or inflamed and non-inflamed ileum tissue from CD patients. Replicate examples highlight the loss of CD11c<sup>+</sup> DCs (yellow) between disease and non-diseased tissue. Scale bar represents 20 µm.

## Supplementary Figure 2



### Supplementary Figure 2: Loss of DCs in the ileum during CD.

Representative gating strategy used to assess PD-L1 and PD-L2 expression on CD11c<sup>+</sup> DCs from blood by flow cytometry of a CD patient compared to the isotype control and Fluorescence Minus One (FMO).