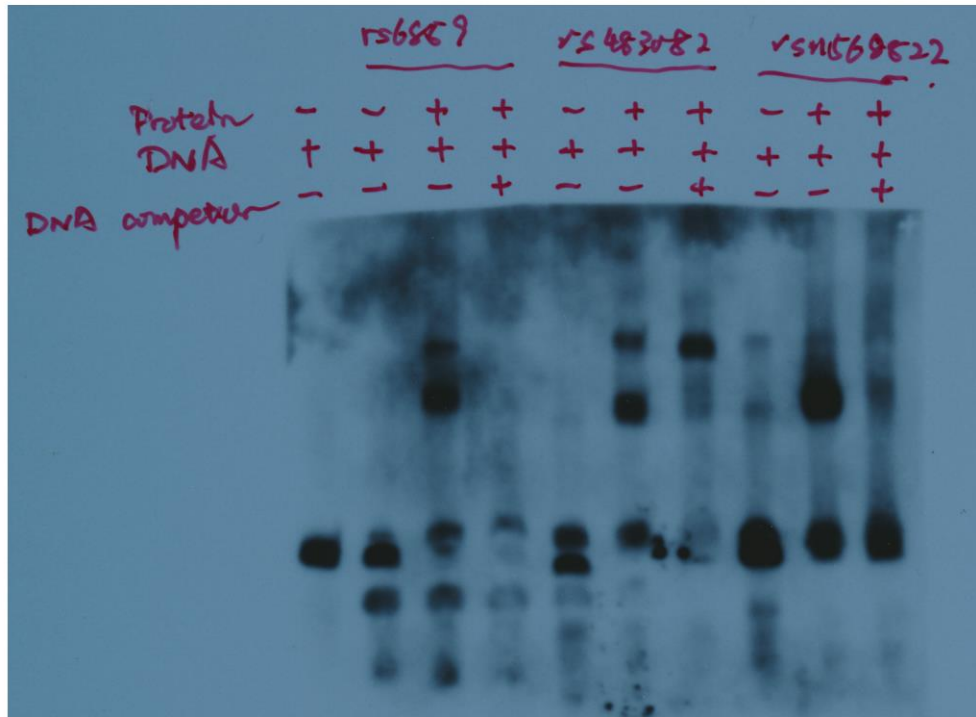


Source data

- 1. Raw gel image for Supplementary Figure 14a: EMSA**
- 2. Raw gel images for Supplementary Figure 14b: western blots for nuclear proteins**

1. Raw gel image for Supplementary Figure 14a: EMSA

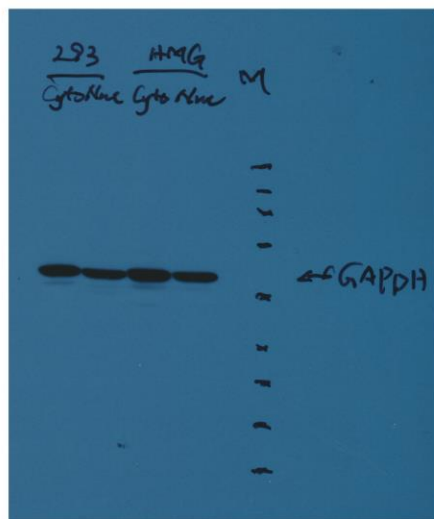
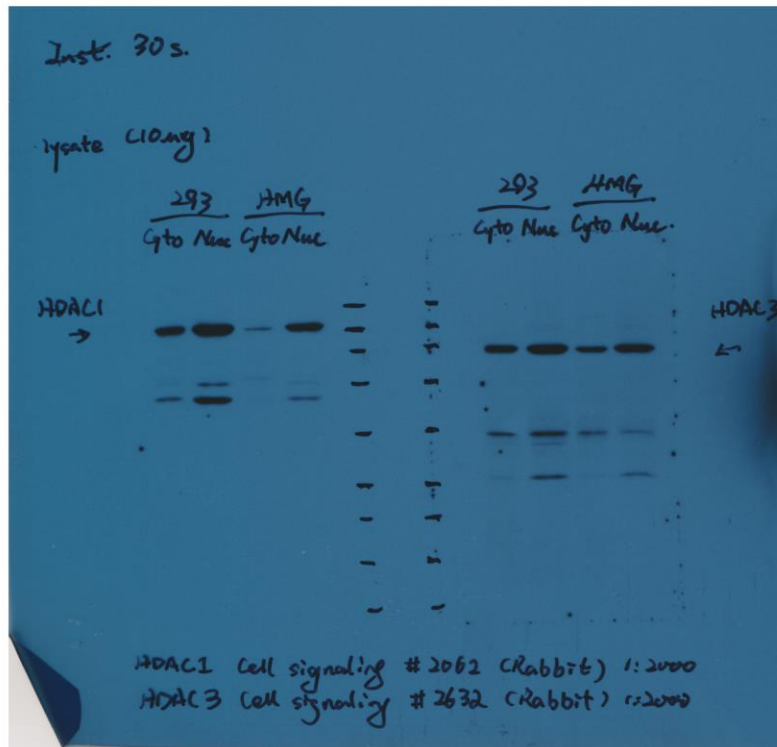


Associated kits:

LightShift Chemiluminescent EMSA Kit (Thermo Scientific, 20148);

Chemiluminescent Nucleic Acid Detection Module Kit (Thermo Scientific, 89880)

2. **Raw gel images for Supplementary Figure 14b: western blots for nuclear proteins.**
 Western blots of HDAC1 and HDAC3 (upper panel) and GAPDH (lower panel) in HEK293T nuclear and cytoplasmic fractions.



Associated kits and antibodies:

NE-PER Nuclear and Cytoplasmic Extraction Reagents (Thermo Scientific, 78833).
 Cell Signaling Technology (HDAC1: #2062 and HDAC3: #2632);
 Thermo Scientific (GAPDH: AM4300).