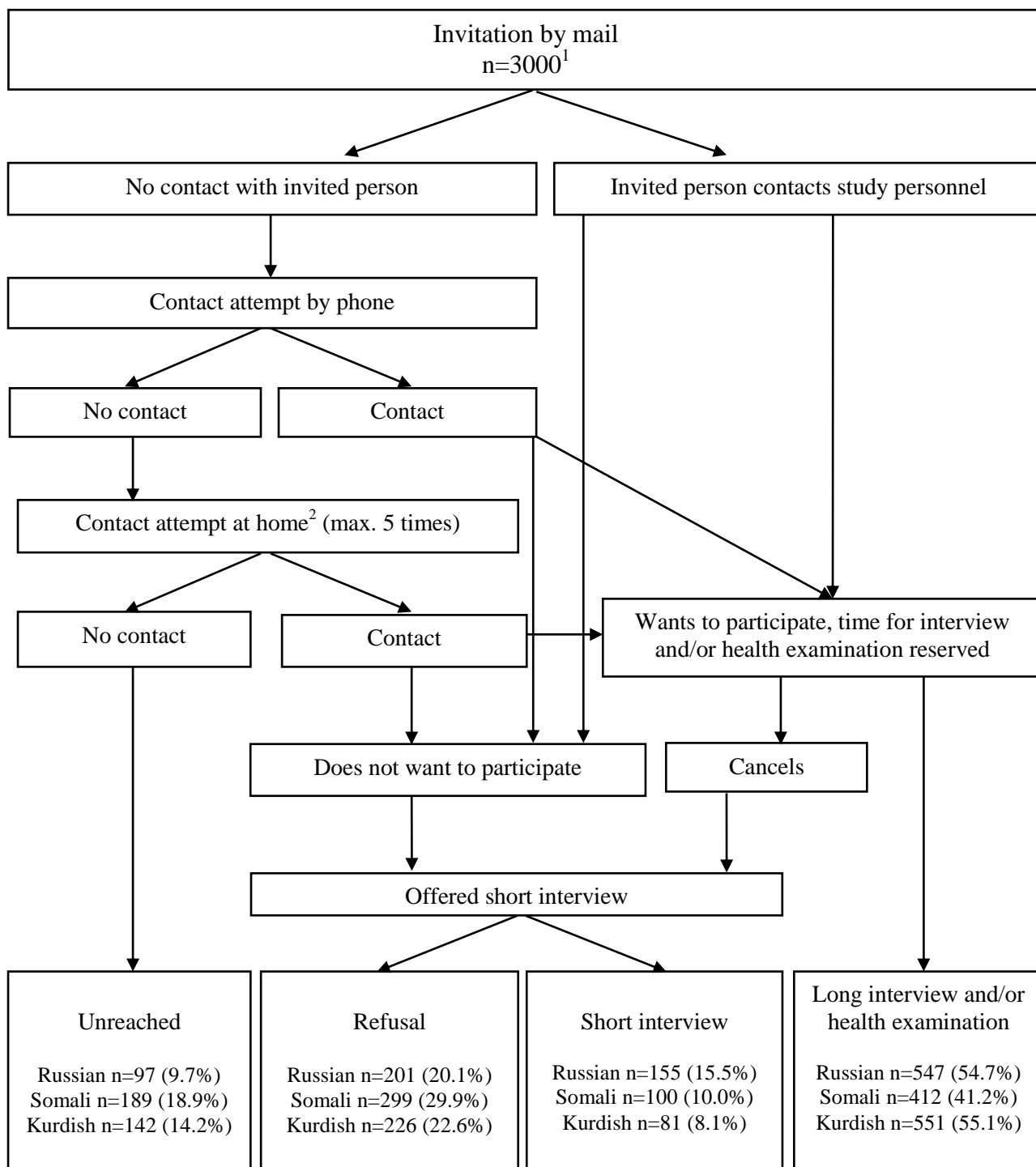


Supplementary Figure 1. Flow chart of the Maamu Study



<sup>1</sup> A sample size of 1 000 persons per population group was considered to provide a sufficient sampling ratio; the sizes of the studied population groups in Finland were 60 000 Russian-speakers, 14 000 Somali-speakers and 9 000 Kurdish-speakers. The sampling method was stratified random sampling by municipality and ethnic group. The sample size of each of the six municipalities was determined according to the sizes of the populations living in the municipality.

<sup>2</sup> If the invitation mail was returned, contact attempts at home were not conducted and the person was considered unreached.

Source: Castaneda A, Rask S, Koponen P, Mölsä M, Koskinen S editors. Migrant Health and Wellbeing. A study on persons of Russian, Somali and Kurdish origin in Finland. (in Finnish, with English abstract). Report 61. Helsinki: National Institute for Health and Welfare (THL); 2012.