

## Supplementary Online Content

Kazandjian D, Gong Y, Keegan P, Pazdur R, Blumenthal GM. Prognostic value of the lung immune prognostic index for patients treated for metastatic non–small cell lung cancer. *JAMA Oncol*. Published online July 25, 2019. doi:10.1001/jamaoncol.2019.1747

**eTable 1.** Summary of Selected Clinical Studies

**eTable 2.** Summary of Key Demographics and Disease Characteristics of Pooled Cohorts

**eFigure 1.** Flow Chart of Clinical Studies and Patients Selected for Analysis

**eFigure 2.** Progression-Free Survival Based on LIPI Score and Treatment: ICI Studies

**eFigure 3.** Progression-Free Survival Based on LIPI Score and Treatment: TT Studies

**eFigure 4.** Kaplan Meier Progression-Free Survival Estimates by Treatment Arm for Each of the LIPI Categories

**eFigure 5.** Kaplan Meier Overall Survival Estimates by Treatment Arm for Each of the LIPI Categories

This supplementary material has been provided by the authors to give readers additional information about their work.

**eTable 1.** Summary of Selected Clinical Studies

Study	EXPERIMENTAL DRUG	CONTROL	# OF PATIENTS	PATIENT POPULATION
<b>LUX-Lung 3</b>	afatinib	platinum doublet	345	1L EGFRm
<b>Oak</b>	atezolizumab	docetaxel	850	2L
<b>Poplar</b>	atezolizumab	docetaxel	287	2L
<b>ALTa</b>	brigatinib	brigatinib	222	2L ALK+
<b>Profile 1007</b>	crizotinib	pemetrexed/docetaxel	347	2L ALK+
<b>Profile 1014</b>	crizotinib	platinum doublet	343	1L ALK+
<b>checkmate 017</b>	nivolumab	docetaxel	272	2L squamous histology
<b>checkmate 057</b>	nivolumab	docetaxel	582	2L non-squamous histology
<b>aura3</b>	osimertinib	platinum doublet	419	2L T790M EGFRm
<b>flaura</b>	osimertinib*	gefitinib/erlotinib	556	1L EGFRm
<b>Keynote 010</b>	pembrolizumab	docetaxel	691	2L PD-L1+

\*For the FLAURA study, both experimental and control arms were pooled in the targeted therapy arm for the purpose of the pooled analysis.

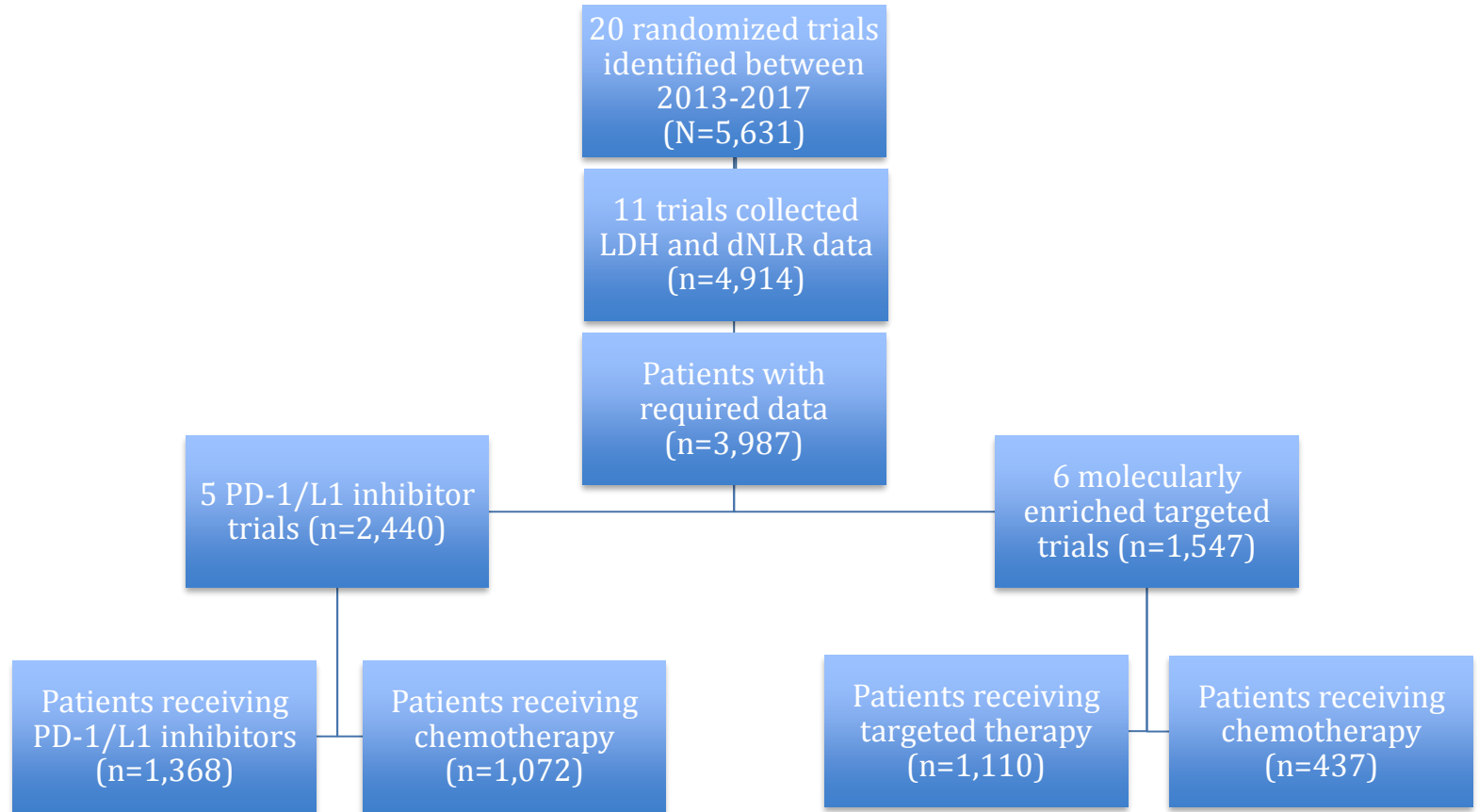
Abbreviations: 1L: first-line treatment; EGFRm: patients with metastatic non-small cell lung cancer (NSCLC) whose tumors have activating epidermal growth factor receptor (EGFR) mutations; 2L: second-line treatment; ALK+: patients with NSCLC whose tumors are anaplastic lymphoma kinase (ALK) positive; T790M EGFRm: patients with metastatic EGFR T790M mutation-positive NSCLC; PD-L1+: patients with metastatic NSCLC whose tumors express PD-L1 (TPS  $\geq$ 1%).

**eTable 2.** Summary of Key Demographics and Disease Characteristics of Pooled Cohorts

Variable	ICI Studies		TT Studies	
	ICI (n=1,368)	CCT (n=1,072)	TT (n=1,110)	CCT (n=437)
Age ≥ 65	561 (41%)	475 (44%)	341 (31%)	102 (23%)
Male	834 (61%)	657 (61%)	430 (39%)	164 (38%)
Smoker	1,036 (76%)	773 (72%)	407 (37%)	136 (31%)
Squamous	363 (27%)	294 (27%)	Not applicable	
ECOG 0	425 (31%)	351 (33%)	518 (47%)	248 (57%)
ECOG 1	940 (69%)	719 (67%)	562 (51%)	178 (41%)
ECOG ≥2	3 (0%)	1 (0%)	29 (3%)	11 (3%)
ECOG unknown	0 (0%)	1 (0%)	1 (0%)	0 (0%)
EGFRm	Not applicable		587 (53%)	140 (32%)
ALK+			523 (47%)	297 (68%)

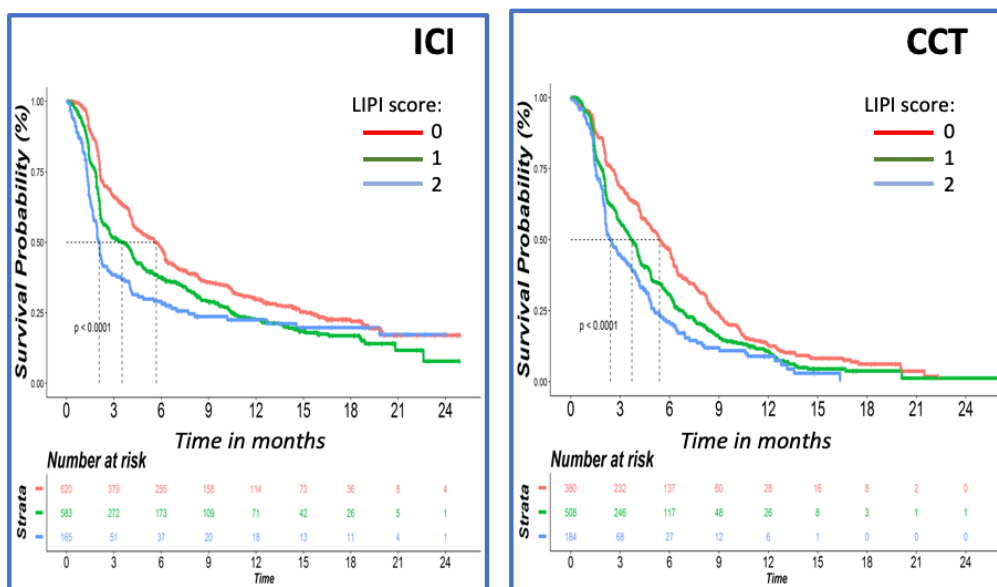
Abbreviations: ICI: Immune checkpoint inhibitor; TT: targeted therapy; CCT: cytotoxic chemotherapy; ECOG PS: Eastern Cooperative Oncology Group performance status; EGFRm: patients with metastatic non-small cell lung cancer (NSCLC) whose tumors have activating epidermal growth factor receptor (EGFR) mutations; ALK+: patients with NSCLC whose tumors are anaplastic lymphoma kinase (ALK) positive.

**eFigure 1.** Flow Chart of Clinical Studies and Patients Selected for Analysis



**eFigure 2.** Progression-Free Survival Based on LIPI Score and Treatment: ICI Studies

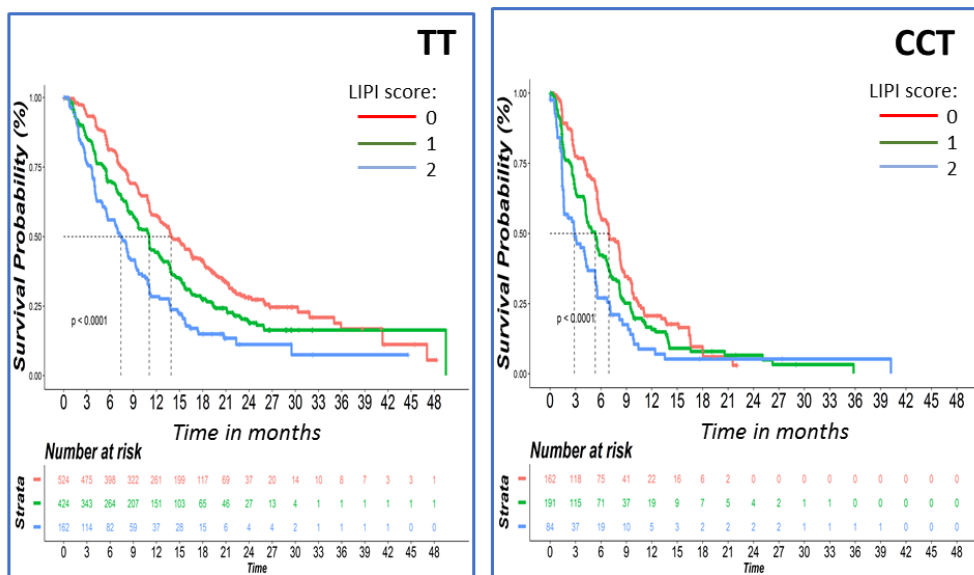
Abbreviations: LIPI, lung immune prognostic index; ICI, immune checkpoint inhibitor; CCT, cytotoxic chemotherapy; HR, hazard ratio; PFS, progression-free survival.



		ICI			CCT		
	LIPI	0	1	2	0	1	2
	(n)	620	583	165	380	508	184
PFS	HR (95%CI)	0.59 (0.48, 0.72)	0.79 (0.64, 0.98)	1	0.56 (0.45, 0.68)	0.78 (0.64, 0.95)	1
	Median months (95%CI)	5.7 (4.6, 6.2)	3.5 (2.7, 4.2)	2.1 (1.7, 2.3)	5.4 (4.7, 6.1)	3.7 (3.2, 4.1)	2.4 (2.1, 3.4)
Global Log Rank		P <0.0001			P <0.0001		

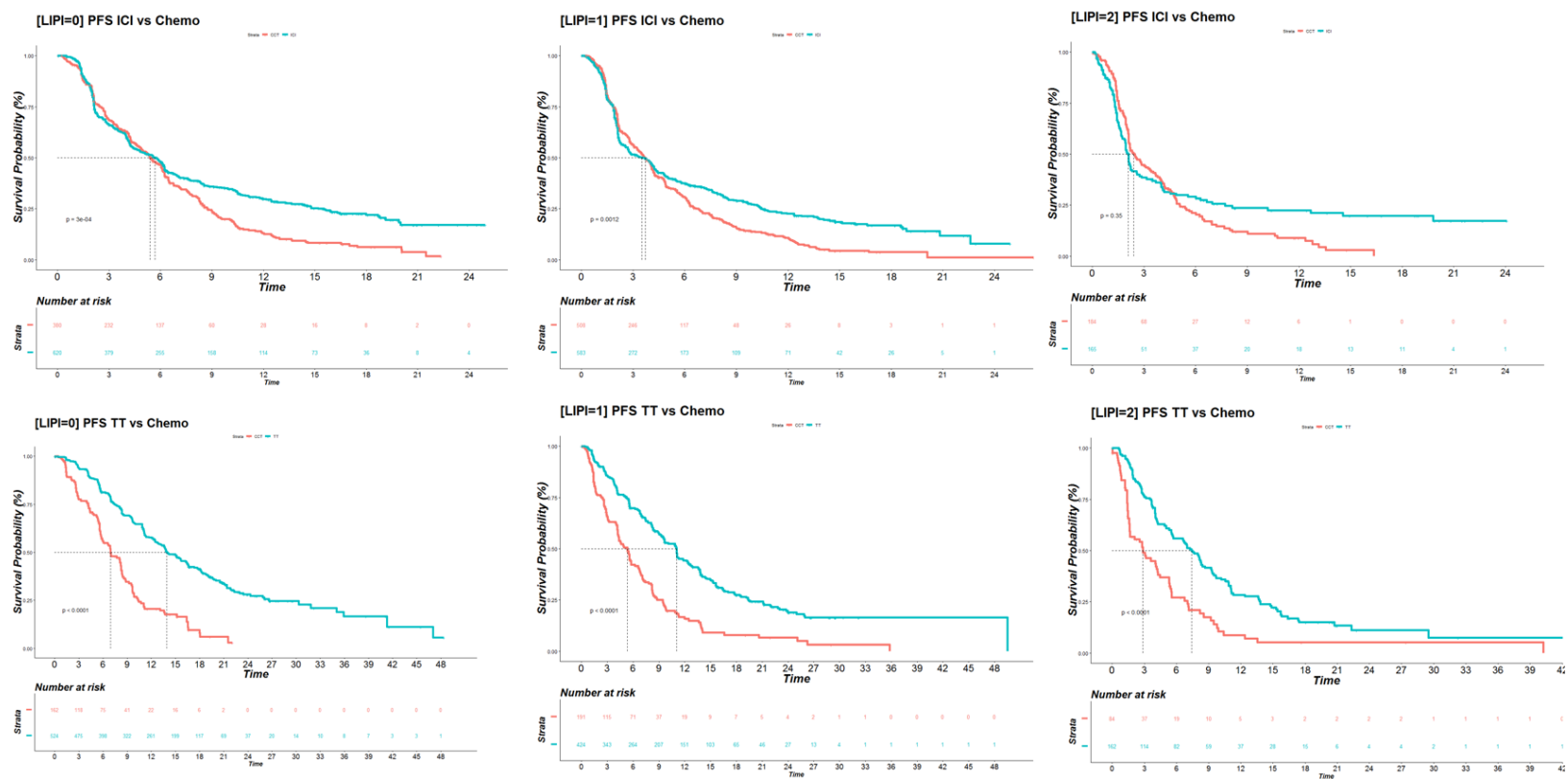
**eFigure 3.** Progression-Free Survival Based on LIPI Score and Treatment: TT Studies

Abbreviations: LIPI, lung immune prognostic index; TT, targeted therapy; CCT, cytotoxic chemotherapy; HR, hazard ratio; PFS, progression-free survival.



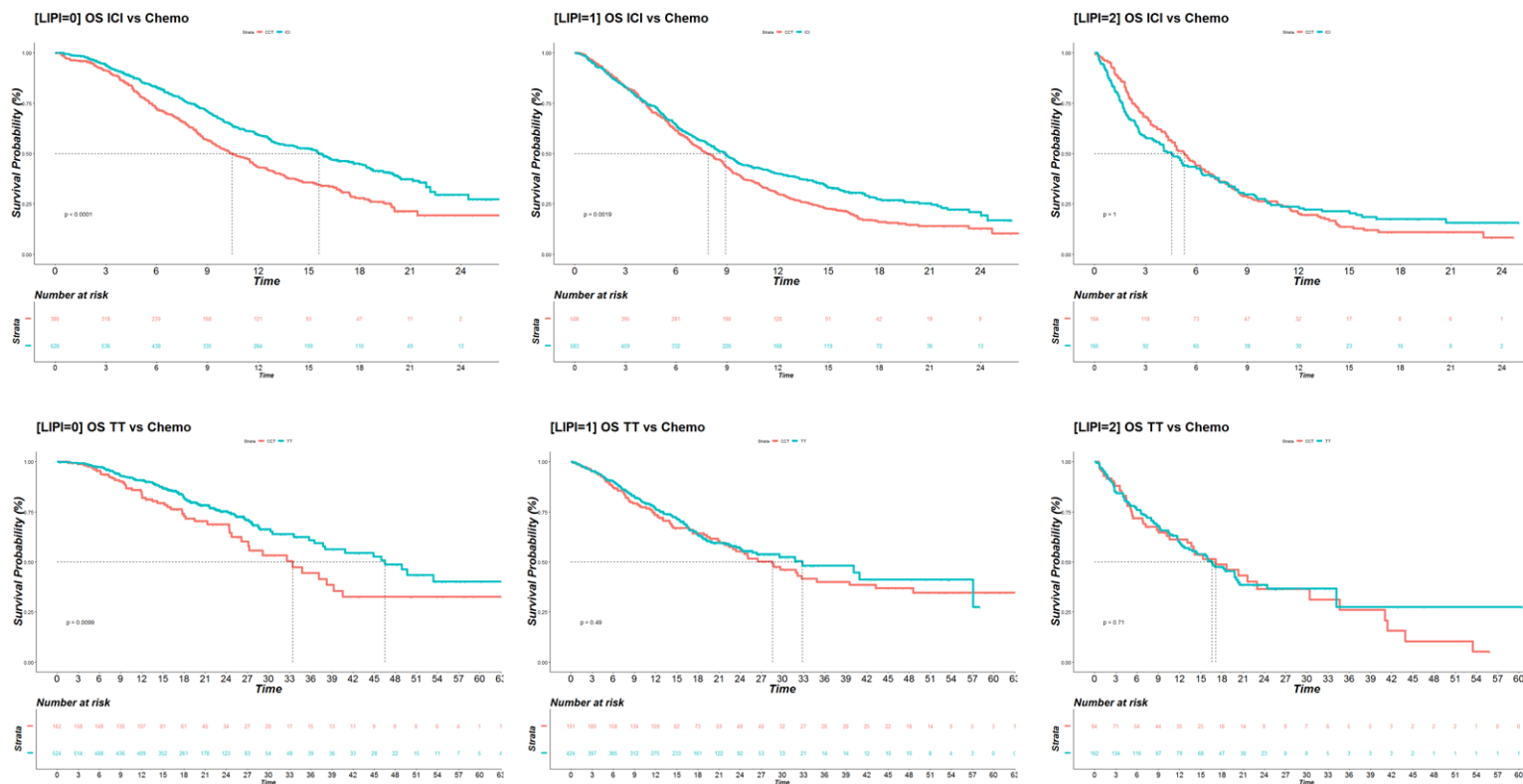
		TT			CCT		
	LIPI	0	1	2	0	1	2
	(n)	524	424	162	162	191	84
PFS	HR (95%CI)	0.46 (0.37, 0.57)	0.67 (0.54, 0.83)	1	0.51 (0.38, 0.69)	0.70 (0.53, 0.93)	1
	Median months (95%CI)	13.9 (12.9, 15.7)	11.1 (9.6, 11.8)	7.4 (5.5, 8.6)	6.9 (5.8, 8.2)	5.3 (4.2, 5.8)	2.9 (1.6, 4.3)
	Global Log Rank	P < 0.0001			P < 0.0001		

**eFigure 4.** Kaplan Meier Progression-Free Survival Estimates by Treatment Arm for Each of the LIPI Categories



Abbreviations: LIPI, lung immune prognostic index; PFS, progression-free survival; ICI, immune checkpoint inhibitor; chemo, chemotherapy; TT, targeted therapy; Time, time in months.

**eFigure 5.** Kaplan Meier Overall Survival Estimates by Treatment Arm for Each of the LIPI Categories



Abbreviations: LIPI, lung immune prognostic index; PFS, overall survival; ICI, immune checkpoint inhibitor; chemo, chemotherapy; TT, targeted therapy; Time, time in months.