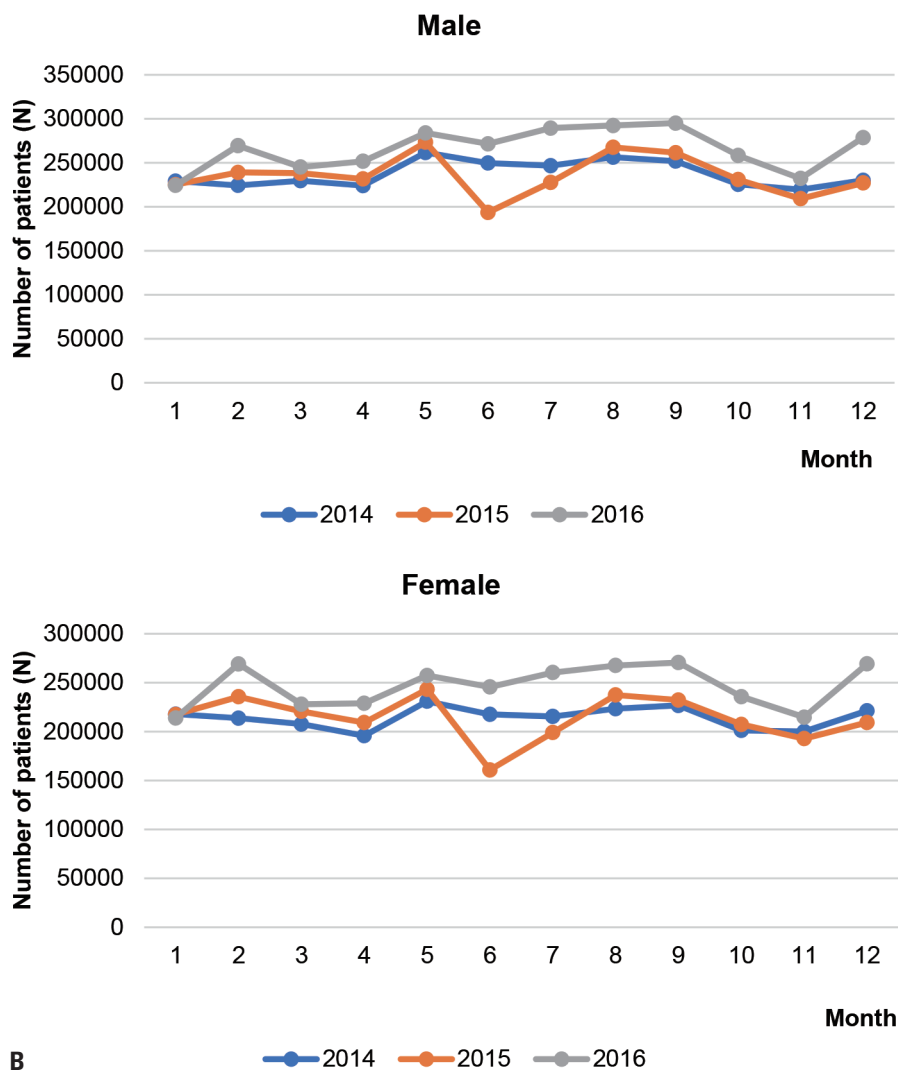
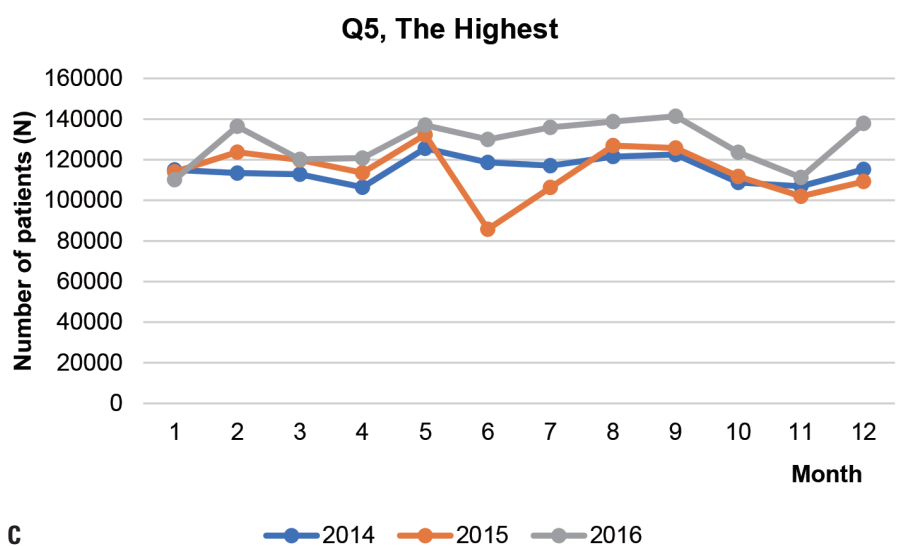
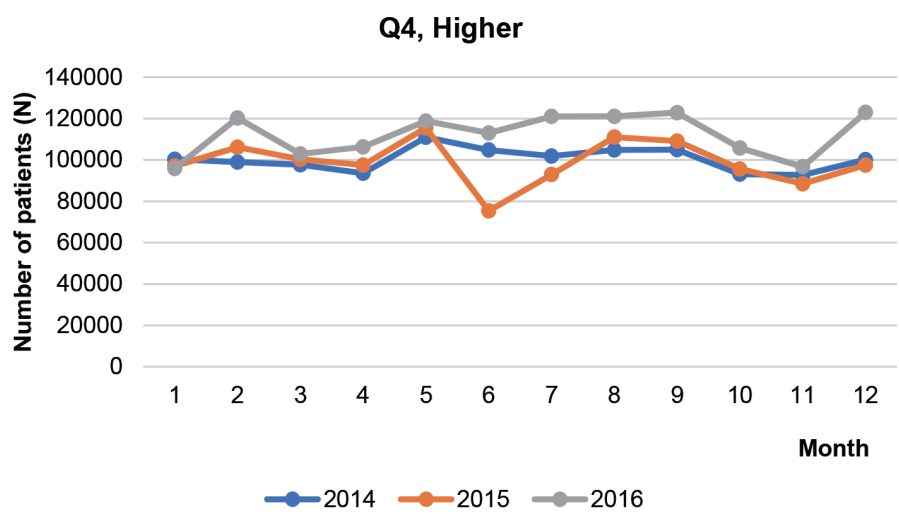
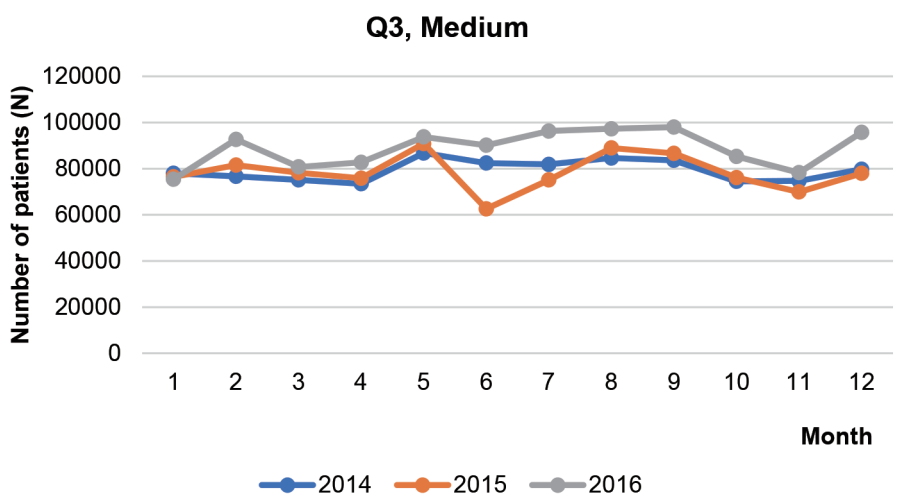
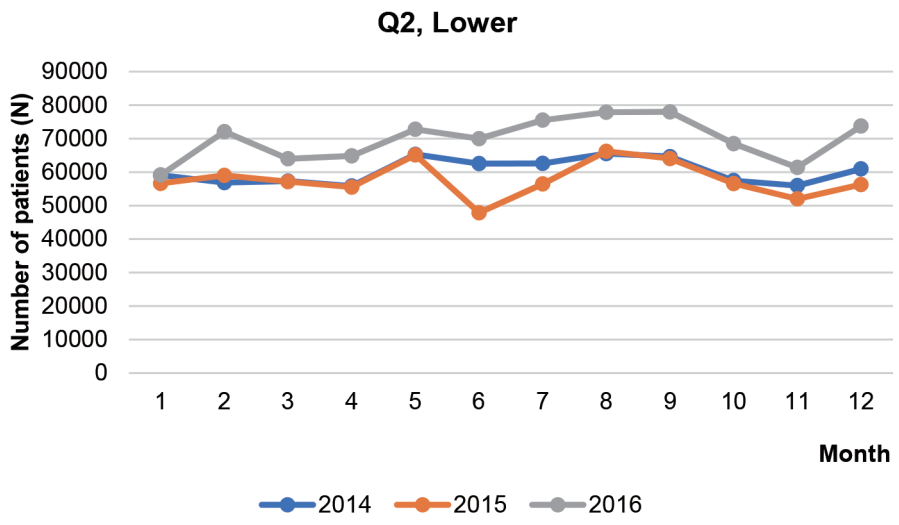
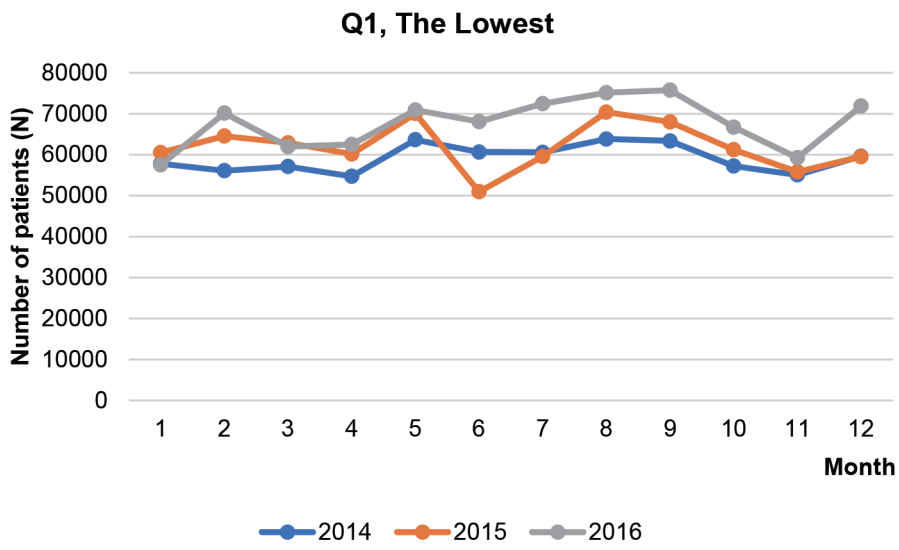


A **Supplementary Fig. 1.** Trends in emergency room visits between 2014 and 2016 according to the age, sex, and socioeconomic position. (A) Monthly number of emergency room visits by age.



B **Supplementary Fig. 1.** Trends in emergency room visits between 2014 and 2016 according to the age, sex, and socioeconomic position. (B) Monthly number of emergency room visits by sex.



C

Supplementary Fig. 1. Trends in emergency room visits between 2014 and 2016 according to the age, sex, and socioeconomic position. (C) Monthly number of emergency room visits by socioeconomic position.



Supplementary Fig. 1. Trends in emergency room visits between 2014 and 2016 according to the age, sex, and socioeconomic position. (D) The ratio of emergency room visits in 2015 compared with averages of 2014 and 2016 according to the age, sex, and socioeconomic position.