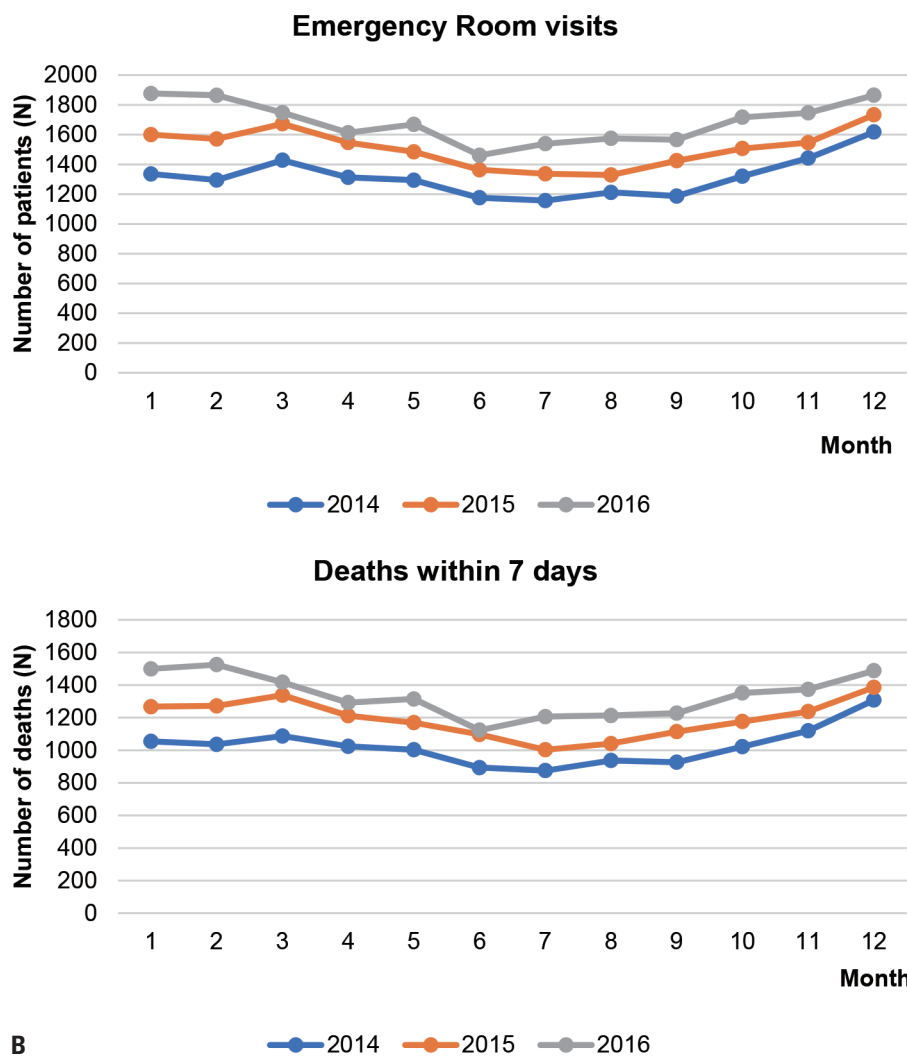
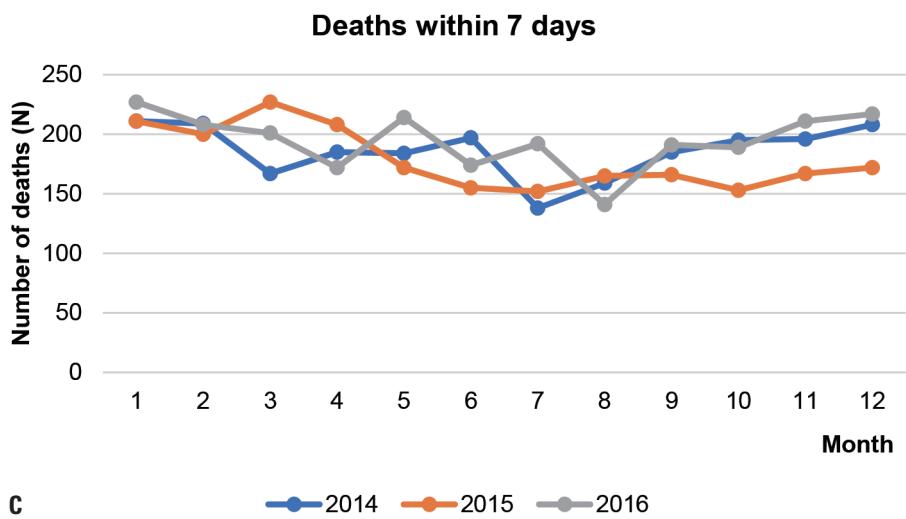
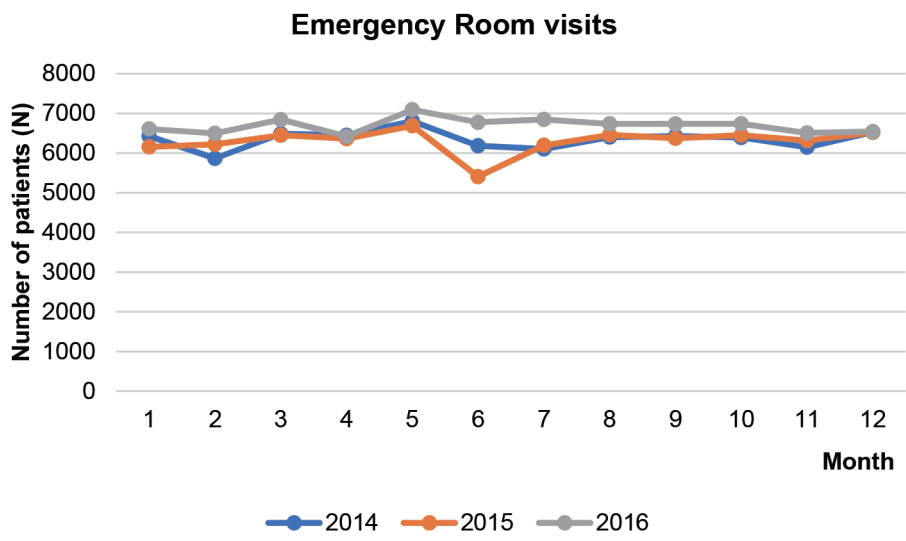


A ● 2014 ● 2015 ● 2016

Supplementary Fig. 2. Trends in emergency room visits and deaths within 7 days between 2014 and 2016 according to the diseases. (A) Monthly number of emergency room visits and deaths within 7 days of myocardial infarction.

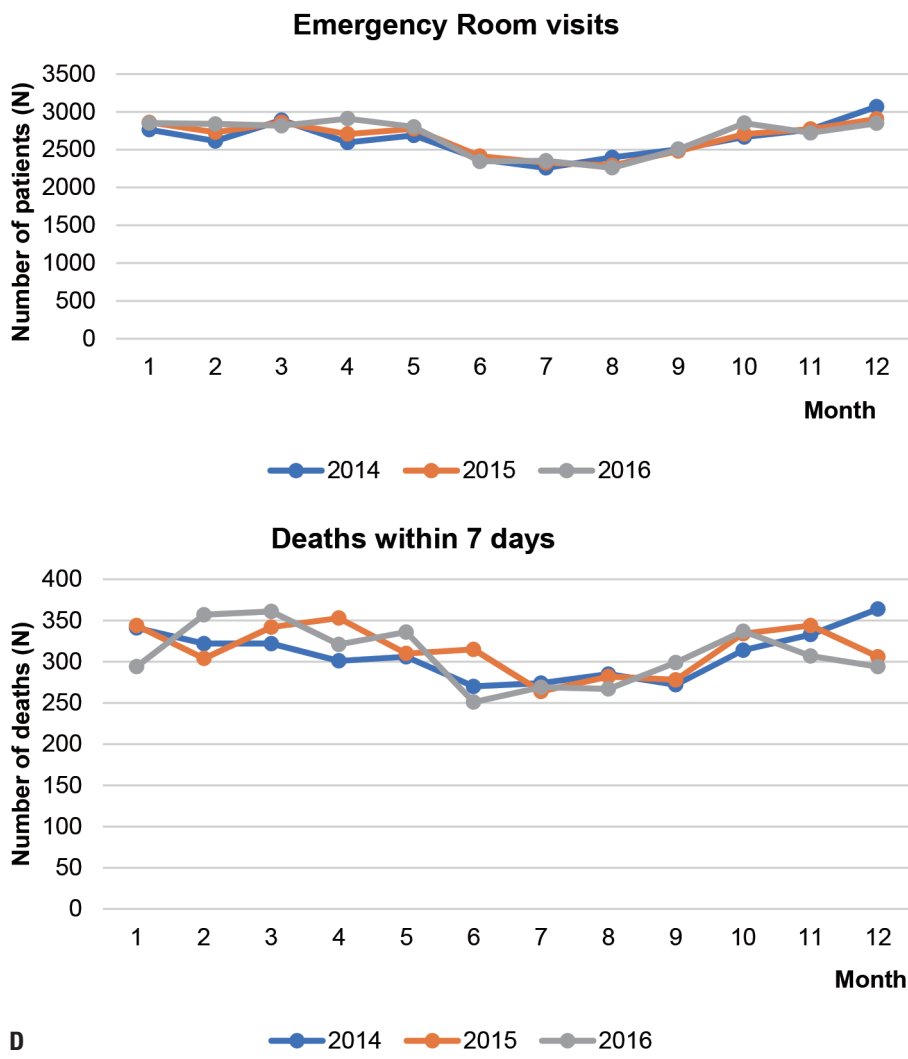


B **Supplementary Fig. 2.** Trends in emergency room visits and deaths within 7 days between 2014 and 2016 according to the diseases. (B) Monthly number of emergency room visits and deaths within 7 days of cardiac arrest.

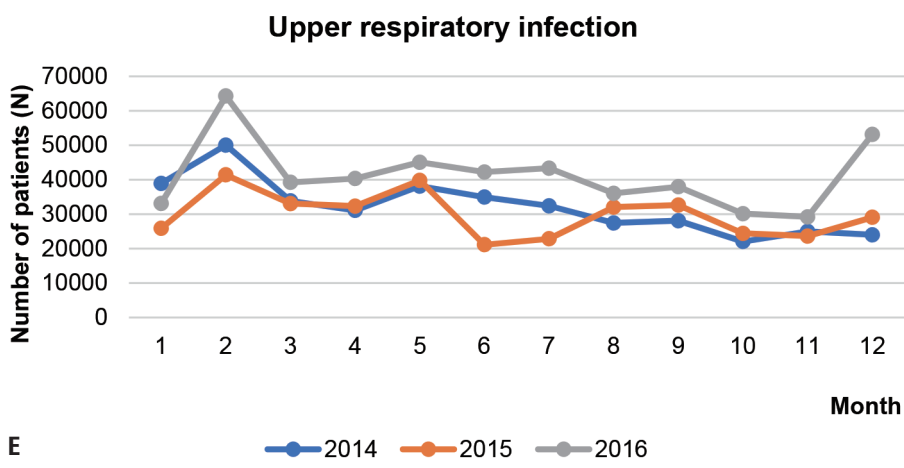
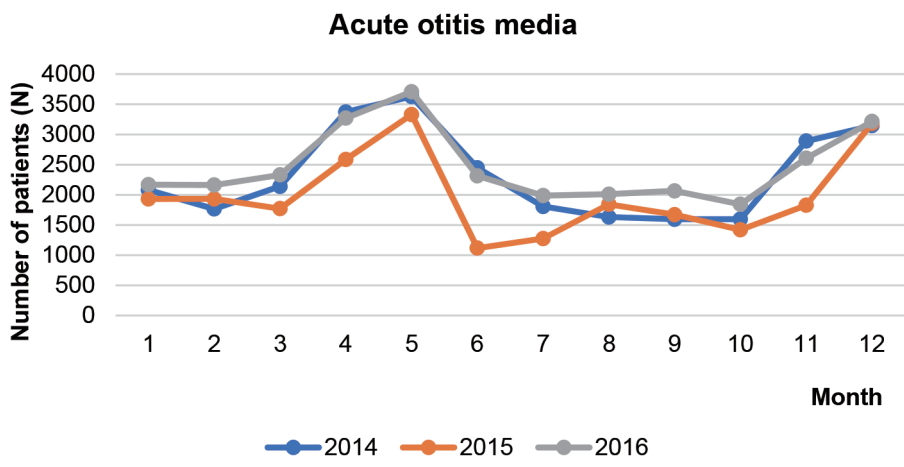
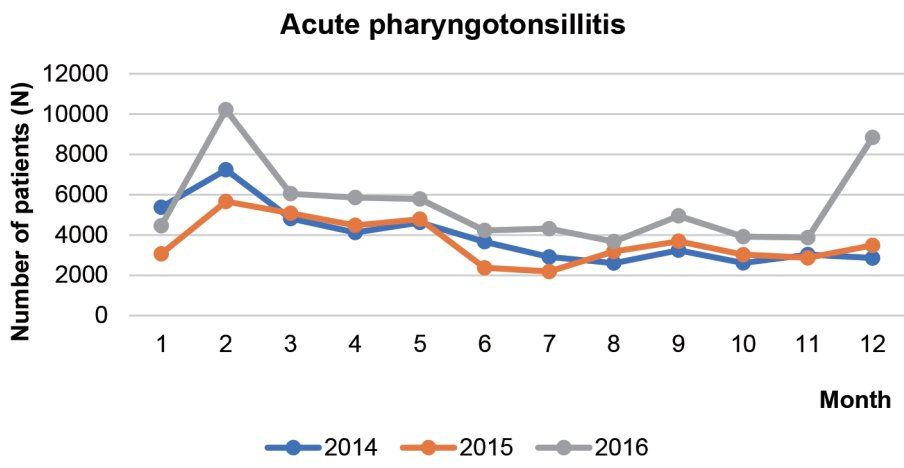
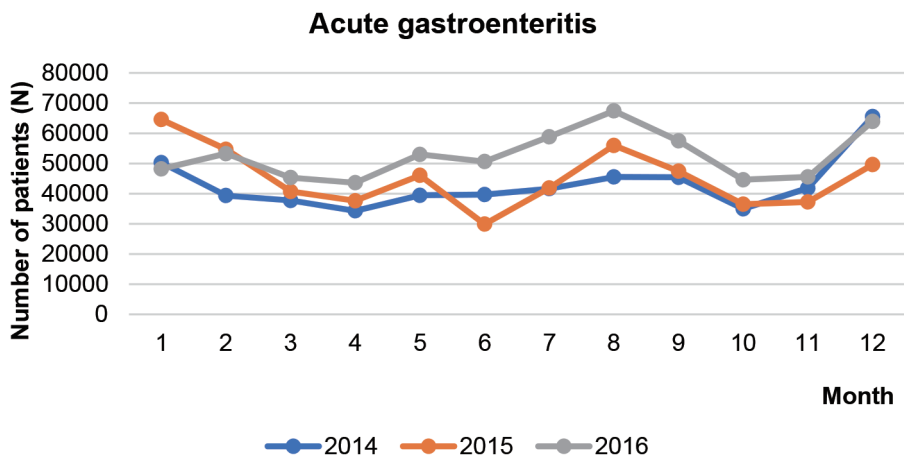


C 2014 2015 2016

Supplementary Fig. 2. Trends in emergency room visits and deaths within 7 days between 2014 and 2016 according to the diseases. (C) Monthly number of emergency room visits and deaths within 7 days of ischemic stroke.



D **Supplementary Fig. 2.** Trends in emergency room visits and deaths within 7 days between 2014 and 2016 according to the diseases. (D) Monthly number of emergency room visits and deaths within 7 days of hemorrhagic stroke.



E

Supplementary Fig. 2. Trends in emergency room visits and deaths within 7 days between 2014 and 2016 according to the diseases. (E) Monthly number of emergency room visits of low acuity diseases.