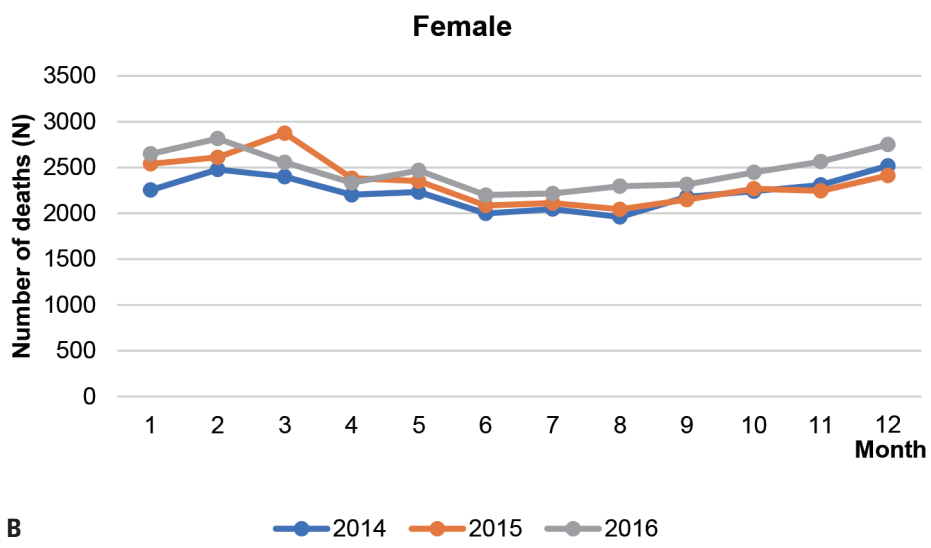
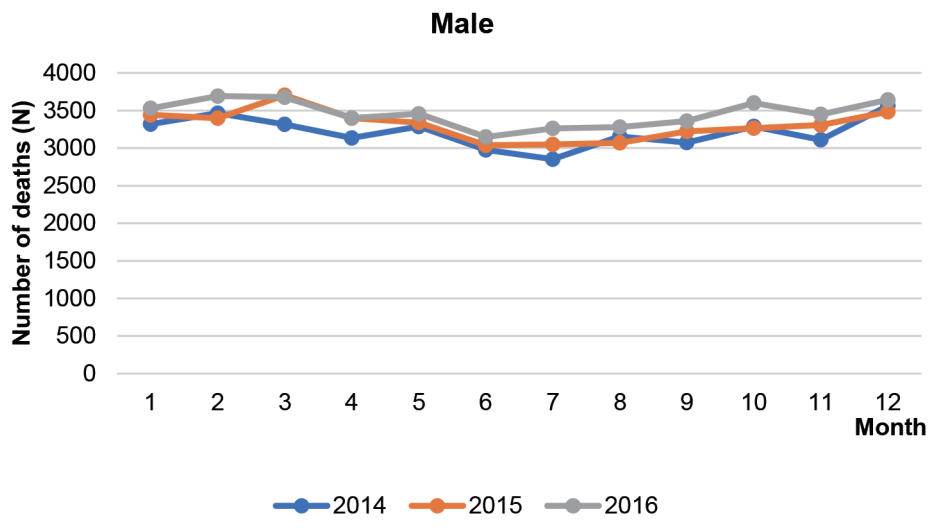
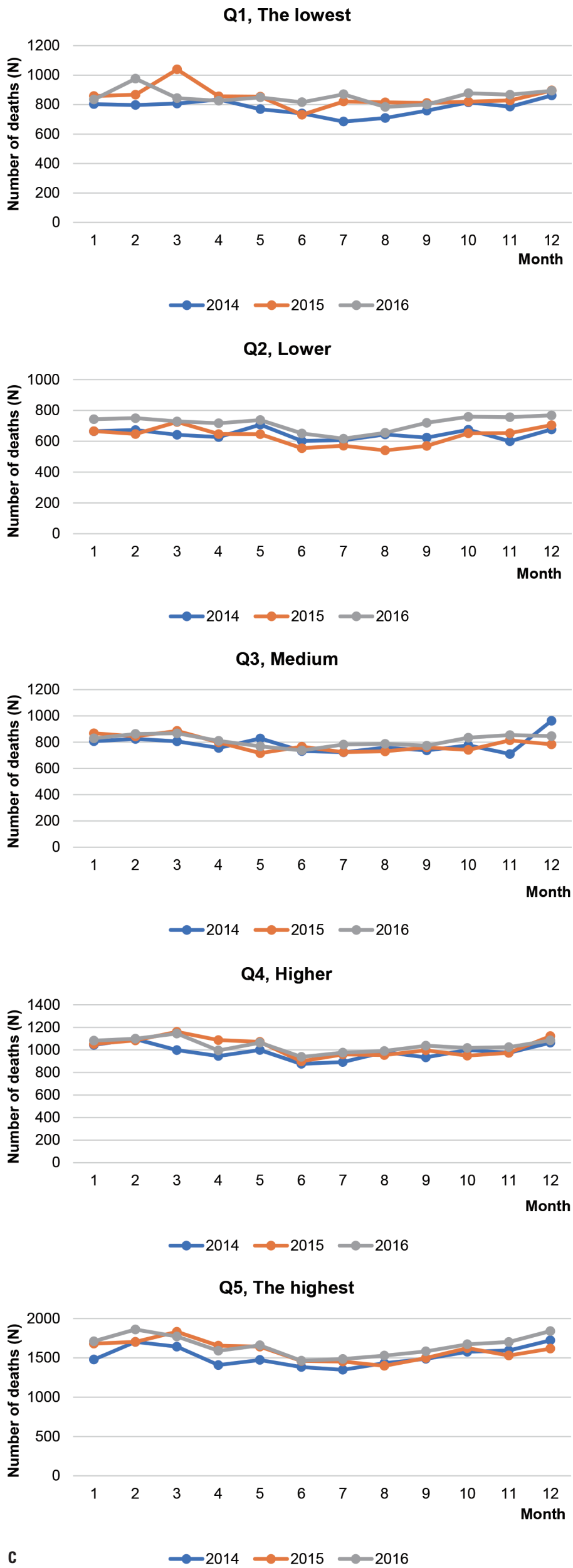


**Supplementary Fig. 4.** Trends in deaths within 7 days of an emergency room visit between 2014 and 2016 according to the age, sex, and socioeconomic position. (A) Monthly number of deaths within 7 days of an emergency room visit by age.

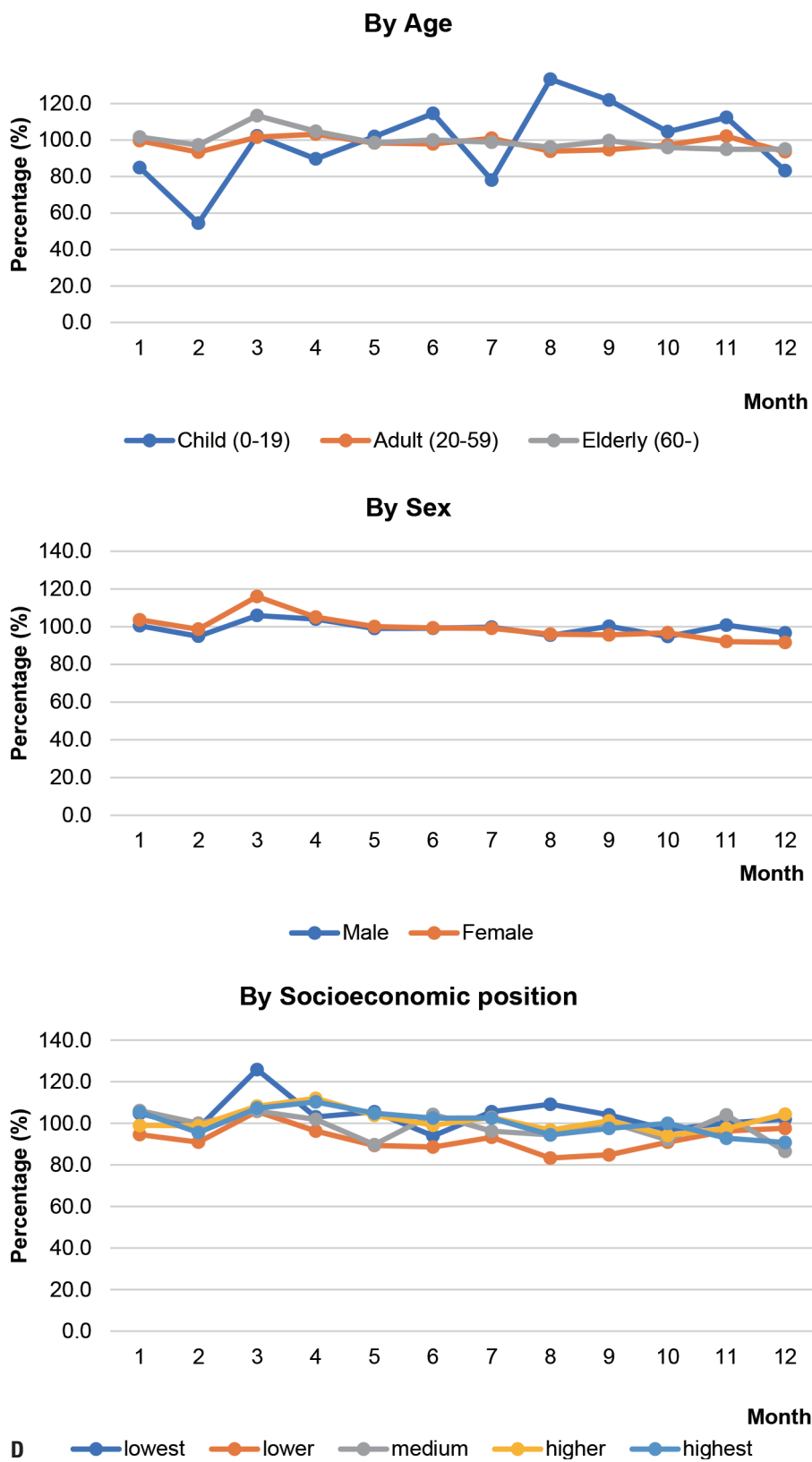


B      ● 2014    ● 2015    ● 2016

**Supplementary Fig. 4.** Trends in deaths within 7 days of an emergency room visit between 2014 and 2016 according to the age, sex, and socioeconomic position. (B) Monthly number of deaths within 7 days of an emergency room visit by sex.



**C** **Supplementary Fig. 4.** Trends in deaths within 7 days of an emergency room visit between 2014 and 2016 according to the age, sex, and socioeconomic position. (C) Monthly number of deaths within 7 days of an emergency room visit by socioeconomic position.



**Supplementary Fig. 4.** Trends in deaths within 7 days of an emergency room visit between 2014 and 2016 according to the age, sex, and socioeconomic position. (D) The ratio of deaths within 7 days of an emergency room visit in 2015 compared with averages of 2014 and 2016 according to the age, sex, and socioeconomic position. The socioeconomic position was categorized for patients who had data on insurance contributions (91.45% of total emergency room visits).