

Supplemental Material

Table S1. Definitions of covariates-Interventions.

Covariates	ICD-9 codes	ICD-10 codes	CCI	Intervention CCP	Code d'Acte (Act Code)
Radiotherapy	V580 V661 V671	Z510 Z541 Z081	1.xx.27.xx	0639	8510,8511,8507,8508,8553,8509,9477,200,8518,8519,8520,8554,7648,8516,746,635,8564,8565,9150,9162,9134,9144,9152,9164,9141,9146,9160,9170,9168,9143,8504
Chemotherapy	V66.2 V67.2	Z54.2 Z08.2		13.55	583,603, 734,94,95,15012,15013,470,472,475,476,7000,15272,15403,15699,15702

CCI: Canadian Classification of Health Interventions, CCP: Canadian Classification of Diagnostic, Therapeutic and Surgical Procedures

Table S2. Definitions of covariates-Comorbidities and Outcomes.

Covariates	ICD-9 codes	Disease	ICD-10 codes
Atrial Fibrillation	427.31	Atrial fibrillation	148.0
Hypertension	401.x	Essential hypertension	I10.x
Diabetes (DM)	250.x	Diabetes mellitus	
		Type I DM	E09.x
		Type II DM	E10.x
		Malnutrition-related DM	E11.x
		Other specified diabetes mellitus	E12.x
		Unspecified diabetes mellitus	E13.x
			E14.x
Dyslipidemia	272.0	Pure hypercholesterolemia	E78.x
Coronary artery disease	414.0X	Coronary atherosclerosis	I25.1x
	414.2X	Chronic total occlusion of coronary artery	
	414.3X	Coronary atherosclerosis due to lipid rich plaque	
	414.8X	Other specified forms of chronic ischemic heart disease	
	414.9X	Chronic ischemic heart disease, unspecified	I25.9x
		Atherosclerosis of coronary artery bypass graft(s) and coronary artery of transplanted heart with angina pectoris	I25.7x
		Other forms of chronic ischemic heart disease	I25.8x
Myocardial infarct	410.x	Acute myocardial infarction	
		ST elevation (STEMI) and non-ST elevation (NSTEMI) myocardial infarction	I21.x
		Subsequent ST elevation (STEMI) and non-ST elevation (NSTEMI) myocardial infarction	I22.x
	411	Other acute and subacute of ischemic heart disease	I24
Heart failure	428.0	Heart failure, unspecified	
	428.1	Left heart failure	150.1
	428.2x	Systolic heart failure	150.2x
	428.3x	Diastolic heart failure	150.3x
	428.4x	Combined systolic and diastolic heart failure	150.4x
	428.9	Heart failure, unspecified	150.9

Peripheral Arterial Disease	443.9	Peripheral vascular disease, unspecified	I73.9
Stroke	433	Occlusion and stenosis of precerebral arteries	I63, I65
	434	Occlusion of cerebral arteries	I66
	434.1	Cerebral embolism	
	434.9	Unspecified occlusion	
	436	Acute but ill-defined cerebrovascular disease	I67.89
	438	Late effects of cerebrovascular disease	I69
TIA	435	Transient cerebral ischemia	G45
Chronic Kidney Disease	585	Chronic kidney disease (CKD)	N18
Heart Failure	428	Heart Failure	I50

Table S3. Definition of Statin side effects.

	ICD code 9	ICD code 10
Hepatitis	070, 573.3	K71.6, K75.9
Transaminitis	790.4	R74.0, R94.5
Myopathy	359.4-359.9, 728	G71, G72, M60, M63
Myositis/Myalgia	729.1	M60.9, M79.1
Sleep disorders	780.50- 780.59	G47
Rhabdomyolysis	728.88	M62.82

Table S4. Multivariate MI free survival analysis of patients with thorax, head or neck cancer treated with radiotherapy by the Cox proportional hazard model (age continuous).

	Hazard Ratio	95% Confidence Interval	P Value
Age	1.04	1.03-1.06	<0.0001
Sex*	1.62	1.31-20..	<.0001
Atrial fibrillation	0.87	0.67-1.13	0.2928
CAD/MI	1.69	1.04-2.73	0.0334
CVD	1.14	0.84-1.56	0.4024
CKD	1.17	0.88-1.55	0.2910
Diabetes	1.33	1.07-1.66	0.0101
Dyslipidemia	1.14	0.90-1.45	0.2692
Heart Failure	1.55	1.22-1.96	0.0003
Hypertension	0.93	0.74-1.18	0.5449
Statin use	0.91	0.72-1.16	0.4562

CAD: coronary artery disease, CVD: cerebrovascular disease, CKD: chronic kidney disease, MI: myocardial infarction

*Reference female sex

Figure S1. Adjusted Kaplan Meier Survival Curves for the Outcome of Myocardial Infarction between Statin users and non-Statin users.

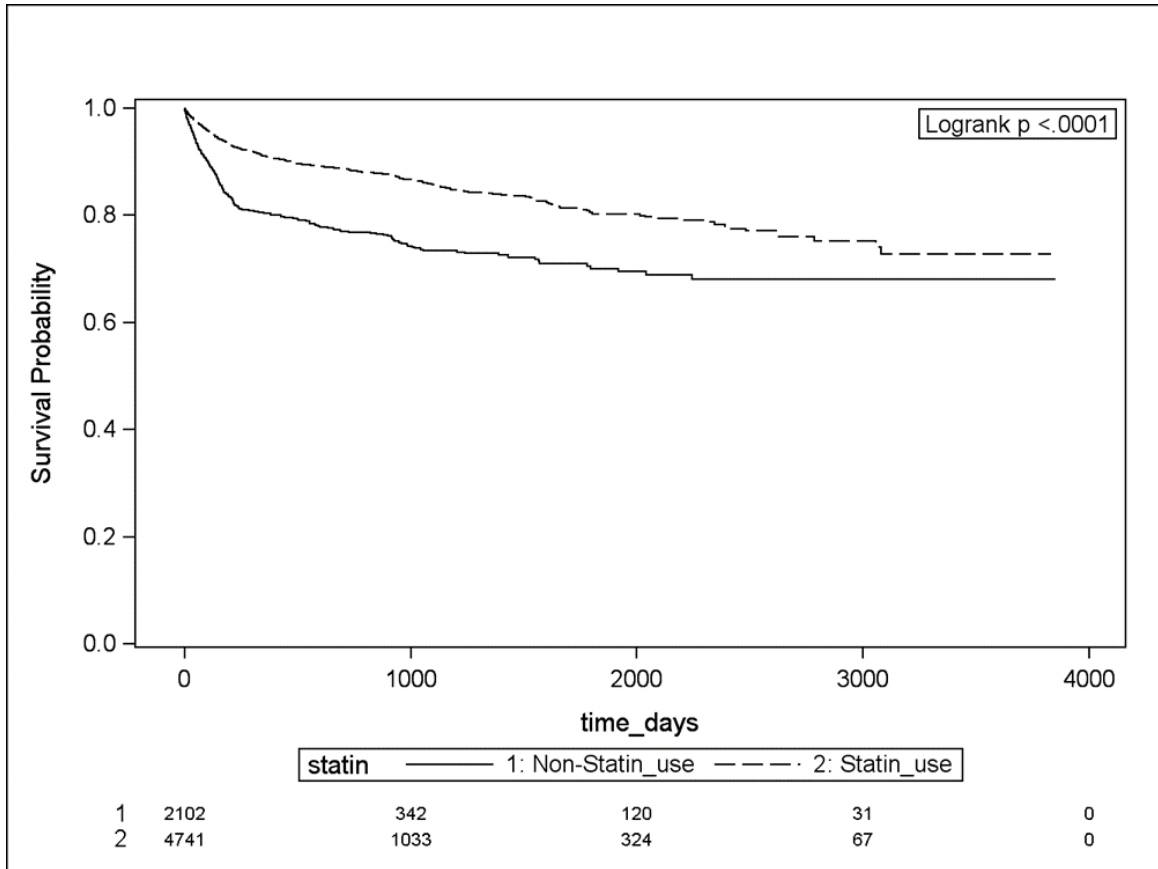
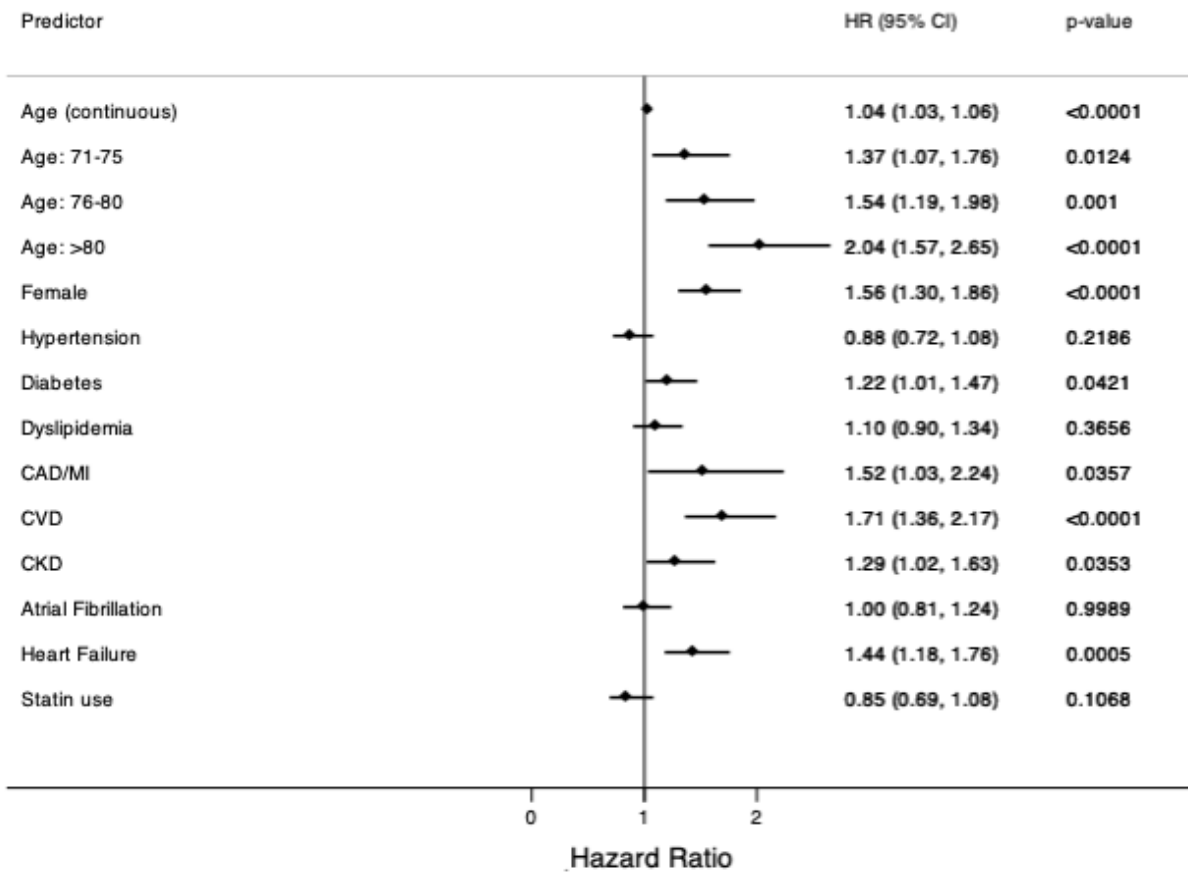
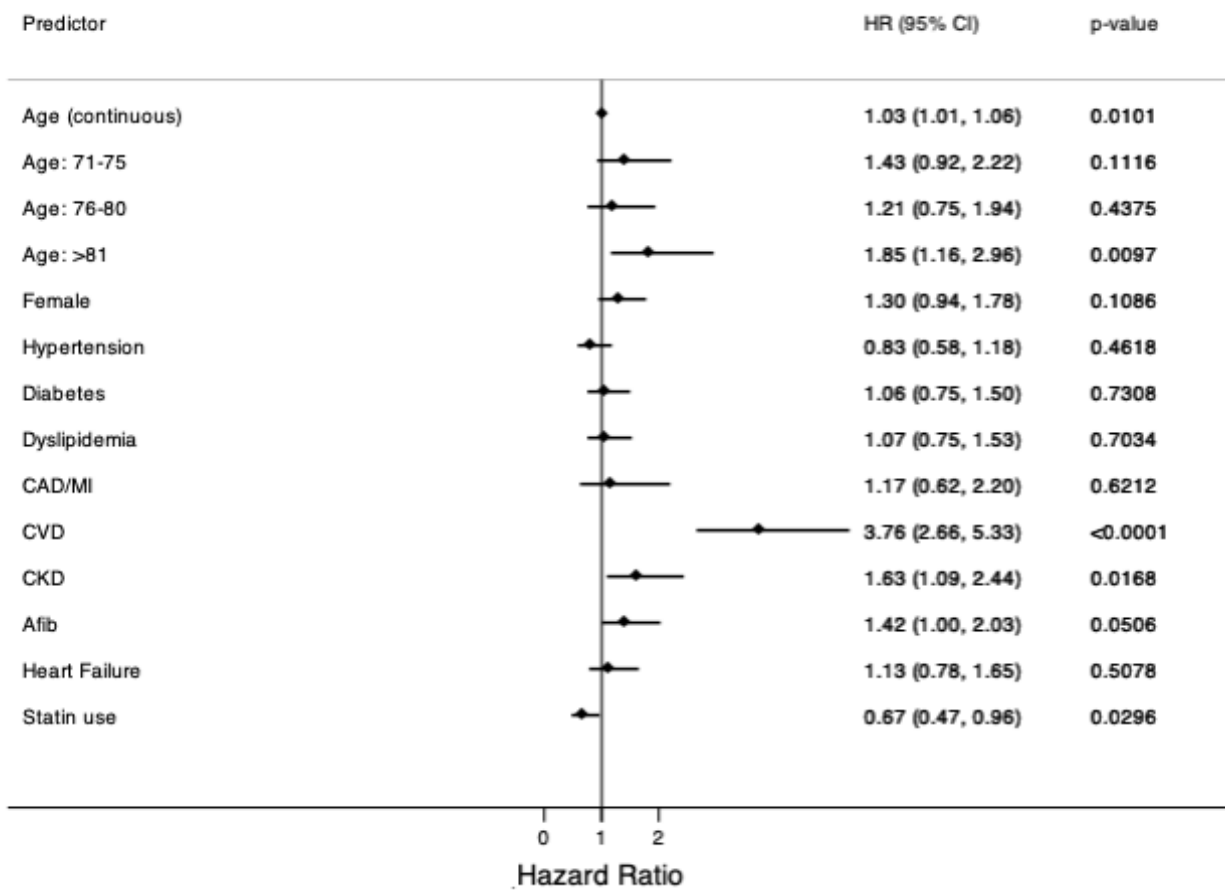


Figure S2. Forest Plot of Hazard Ratio for the Combined Outcome of Stroke and Myocardial Infarction according to Baseline Covariates.



CAD: coronary artery disease, CKD: chronic kidney disease, CVD: cerebrovascular disease, MI: myocardial infarction

Figure S3. Forest Plot of Hazard Ratio for the Outcome of Stroke according to Baseline Covariates



CAD: coronary artery disease, CKD: chronic kidney disease, CVD: cerebrovascular disease, MI: myocardial infarction