

Supporting information

Aptamer-Functionalized Exosomes: Elucidating the Cellular Uptake Mechanism and the Potential for Cancer-Targeted Chemotherapy

Jianmei Zou¹, Muling Shi^{1,3}, Xiaojing Liu¹, Cheng Jin¹, Xiaojing Xing¹, Liping Qiu^{*,1}, Weihong Tan^{1,2}

¹Molecular Science and Biomedicine Laboratory, State Key Laboratory for Chemo/Bio-Sensing and Chemometrics, College of Chemistry and Chemical Engineering, College of Life Sciences, and Aptamer Engineering Center of Hunan Province, Hunan University, Changsha, Hunan 410082, China

²Center for Research at Bio/Nano Interface, Department of Chemistry and Department of Physiology and Functional Genomics, University Health Cancer Center, UF Genetics Institute and McKnight Brain Institute, University of Florida, Gainesville, Florida 32611-7200, United States

³Hunan Provincial Key Laboratory of Forestry Biotechnology, College of Life Science and Technology, Central South University of Forestry & Technology, Changsha 410004, China

* To whom correspondence should be addressed.

E-mail: qiuliping@hnu.edu.cn

Tel: +86-731-88821894

Table of Content

Table S1. DNA sequences designed in this work.....	S-3
Figure S1. Western blot analysis of specific Exos marker proteins (CD63).....	S-3
Figure S2. Fluorescence spectra of the precipitant solution in different samples.....	S-4
Figure S3. CEM cells or Ramos cells were treated with TAMRA-labeled diacylipid-sgc8 conjugates.....	S-4
Figure S4. Relative fluorescence intensity of Dil remained in the Exos.....	S-5
Figure S5. CLSM images of CEM cells incubated with Dil-labeled Exos or sgc8-Exos for different time.....	S-5
Figure S6. CLSM images of CEM cells incubated with Dil-labeled sgc8-Exos at different conditions.....	S-6
Figure S7. CLSM images of CEM cells incubated with cy5-labeled sgc8 at different conditions.....	S-6
Figure S8. CLSM images of CEM cells incubated with Dil-labeled Exos at different conditions.....	S-7
Figure S9. Fluorescence spectra of Dox after incubation with different concentration of Exos or BSA.....	S-7
Figure S9. Release profiles of free Dox and Dox from Exos-D in PBS.....	S-7
Figure S10. CLSM images of CEM cells or Ramos cells treated with sgc8-Exos-D or lib-Exos-D.....	S-8

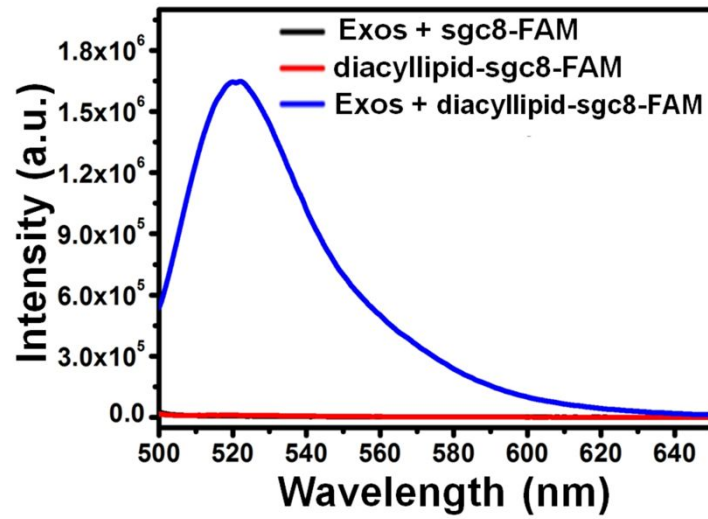


Figure S2. Fluorescence spectra of the precipitant solution in different samples.

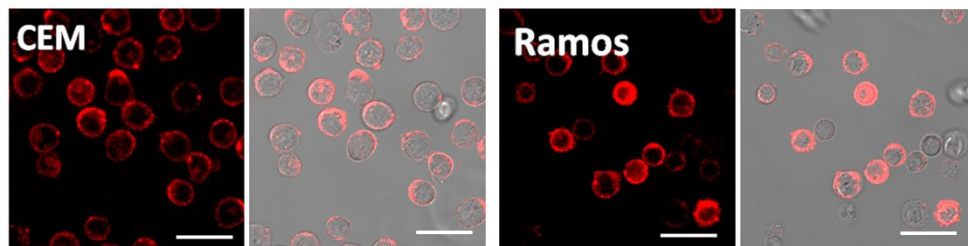


Figure S3. CLSM images of CEM cells or Ramos cells treated with TAMRA-labeled diacyllipid-sgc8 conjugates (500 nM) at 37 °C for 0.5 h. The scale bar represents 20 μm .

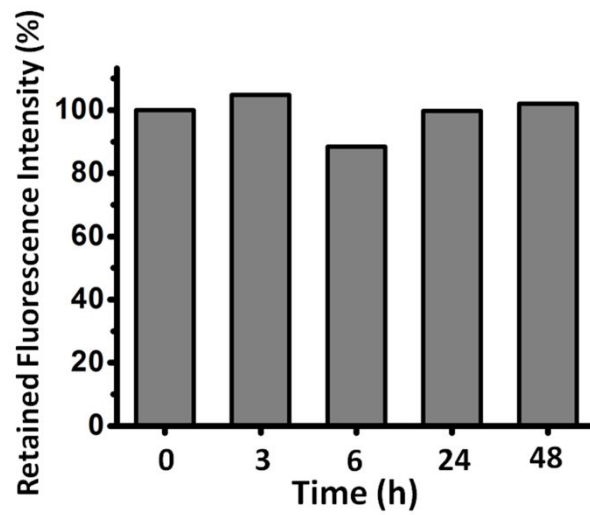


Figure S4. Relative fluorescence intensity of Dil remained in the Exos after incubation in PBS (pH 7.4) for different time spans.

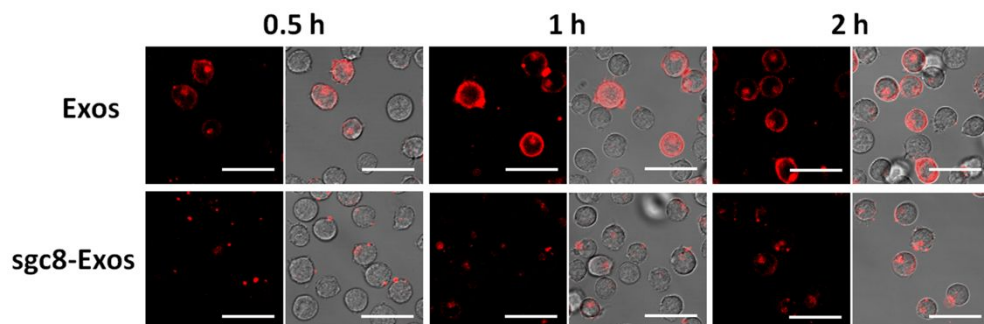


Figure S5. CLSM images of CEM cells incubated with Dil-labeled Exos or Dil-labeled sgc8-Exos for different lengths of time. The scale bar represents 30 μm .

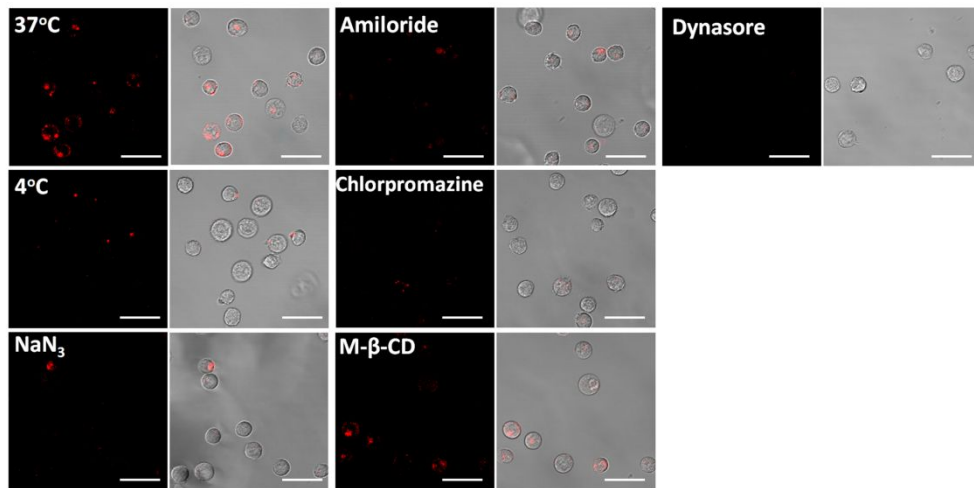


Figure S6. CLSM images of CEM cells incubated with Dil-labeled sgc8-Exos at different conditions. The scale bar represents 30 μm .

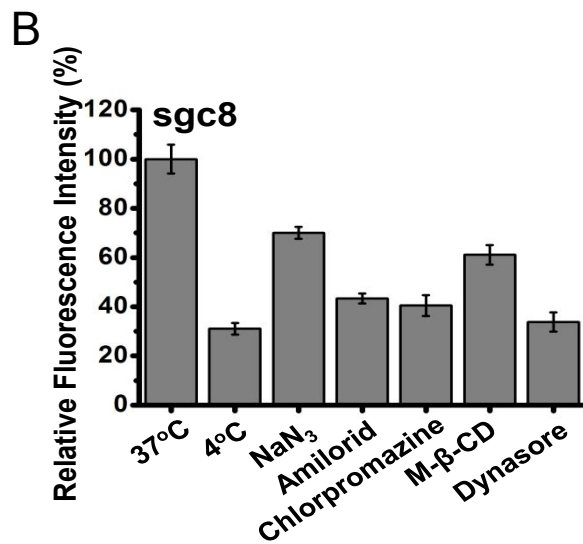
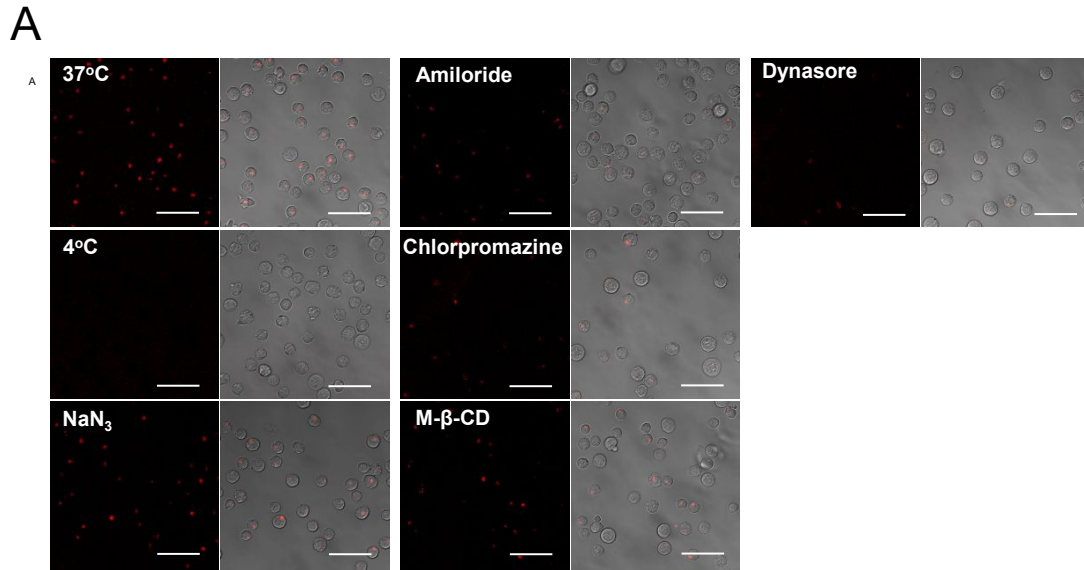


Figure S7. (A) CLSM images of CEM cells incubated with Cy5-labeled *sgc8* at different conditions. The scale bar represents 30 μm . (B) Histogram analysis of the corresponding fluorescence signal.

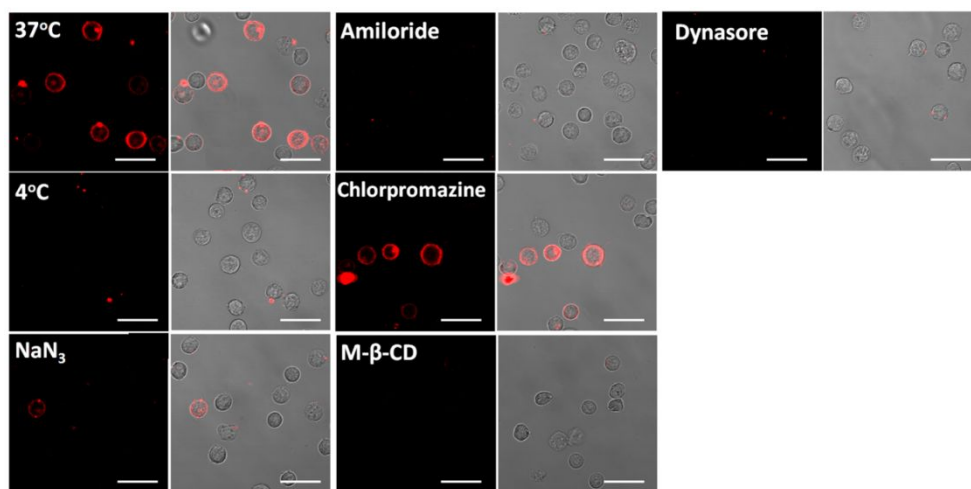


Figure S8. CLSM images of CEM cells incubated with Dil-labeled Exos at different conditions. The scale bar represents 30 μm .

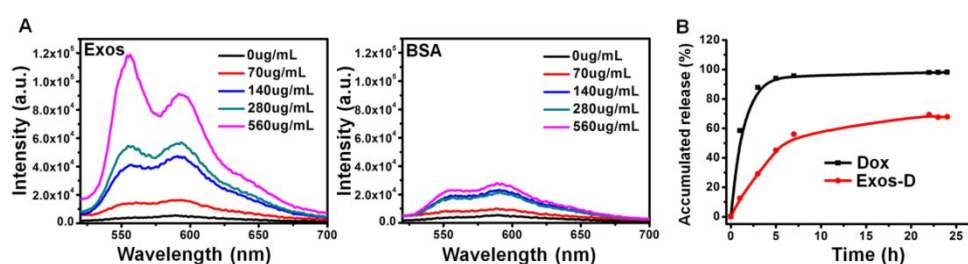


Figure S9. (A) Fluorescence spectra of Dox after incubation with different concentration of Exos or BSA. (B) Release profiles of free Dox and Dox from Exos-D in PBS (pH 7.4).

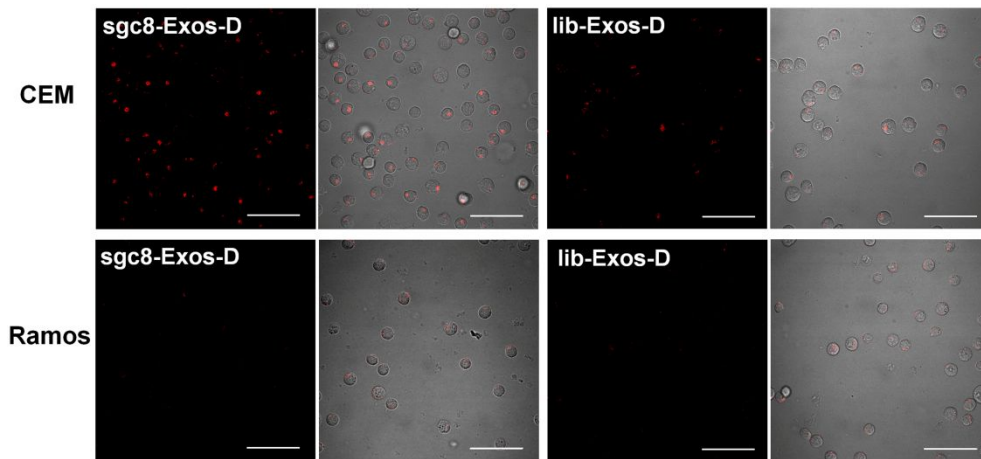


Figure S10. CLSM images of CEM cells or Ramos cells treated with sgc8-Exos-D (A) or lib-Exos-D (B) at 37 °C for 1 h. The scale bar represents 50 μ m.

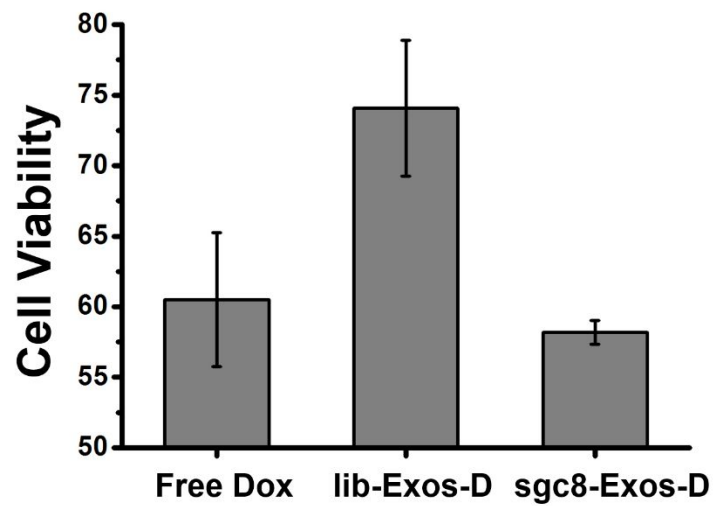


Figure S11. Cytotoxicity assay of CEM cells incubated with free Dox, lib-Exos-D or sgc8-Exos-D at 37 °C for 48 h. The corresponding concentration of Dox was fixed at 1 μ M.