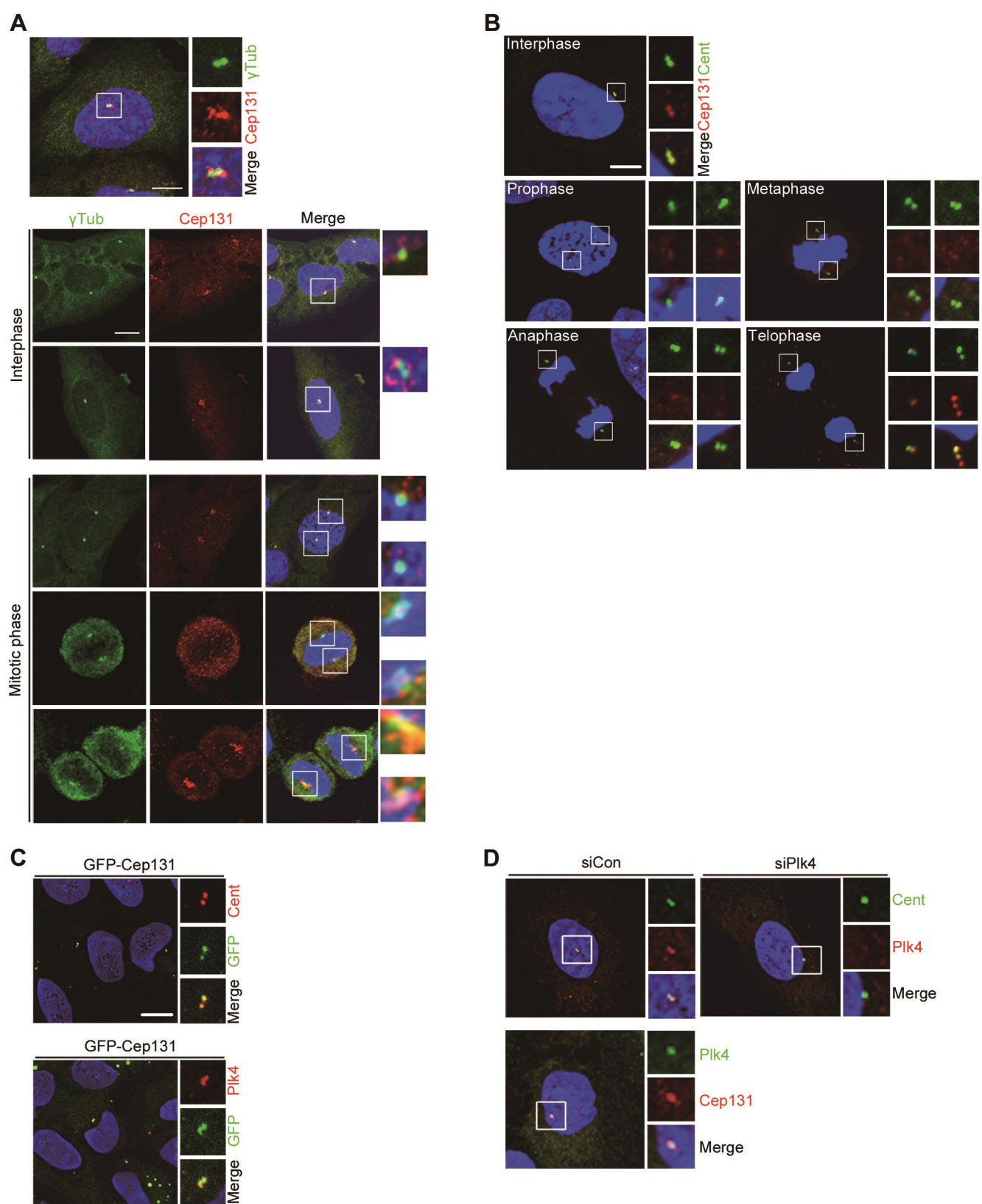
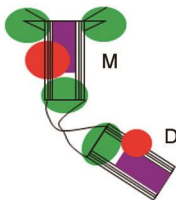
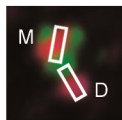
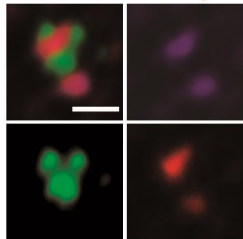
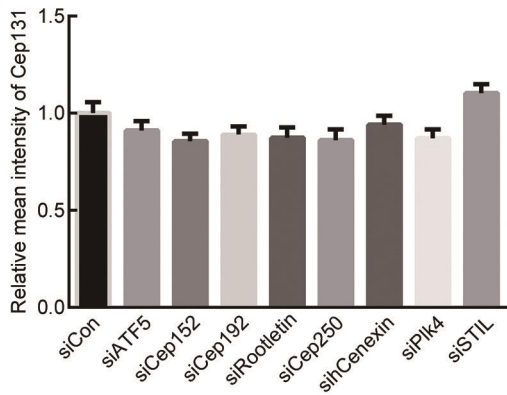
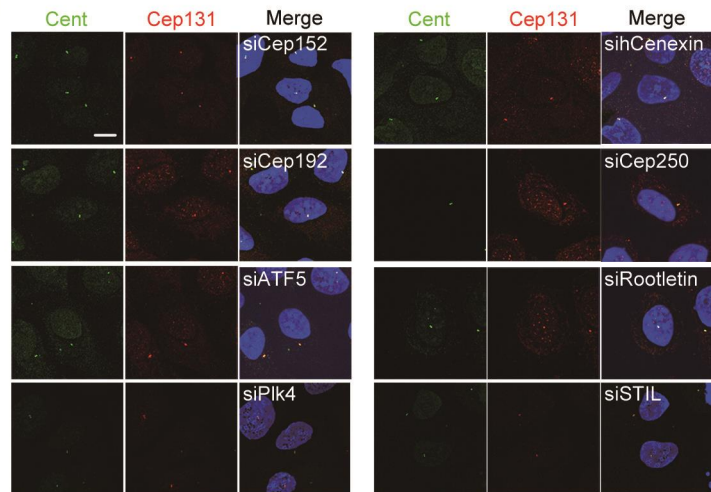


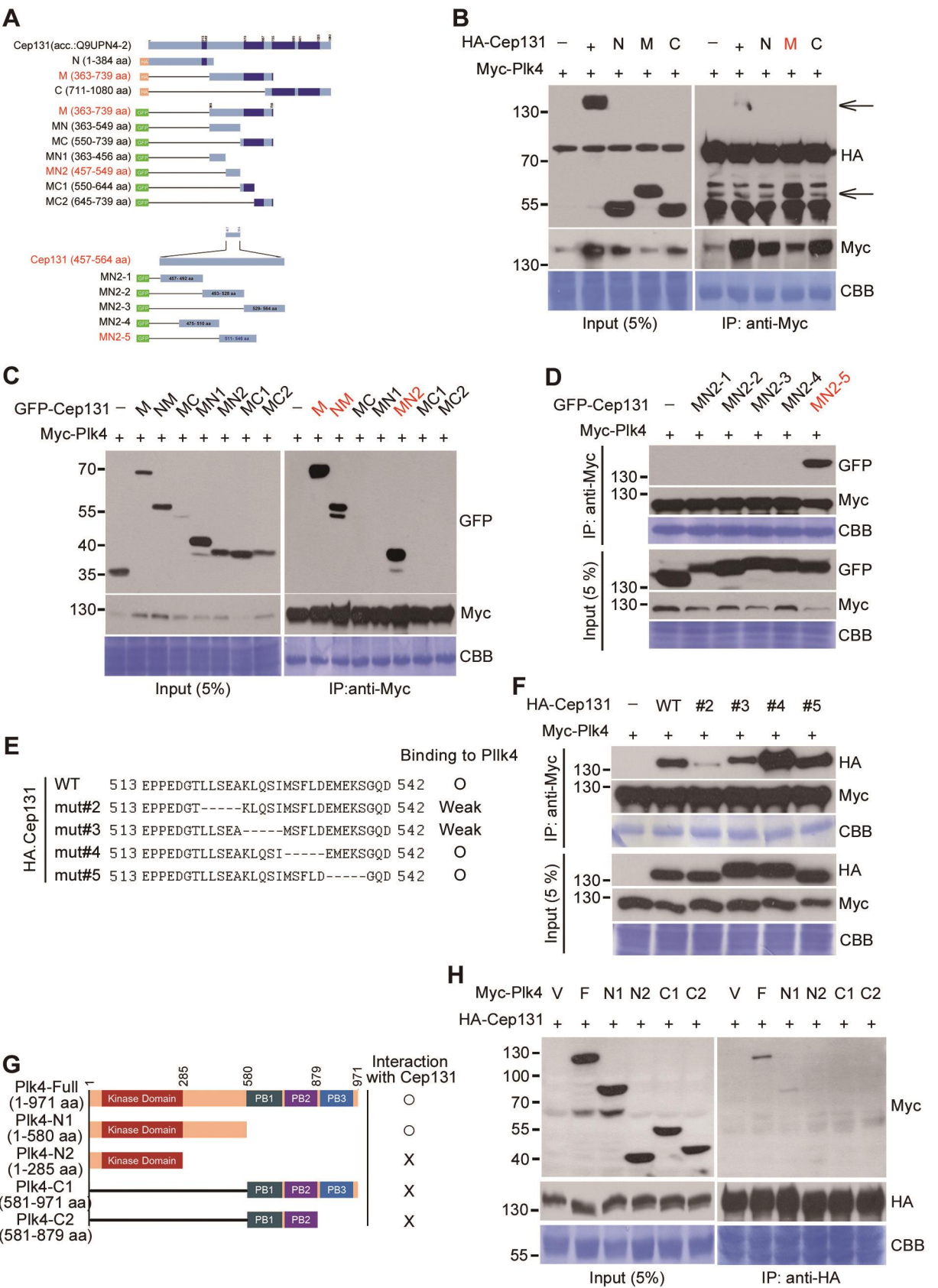
**Figure S1**



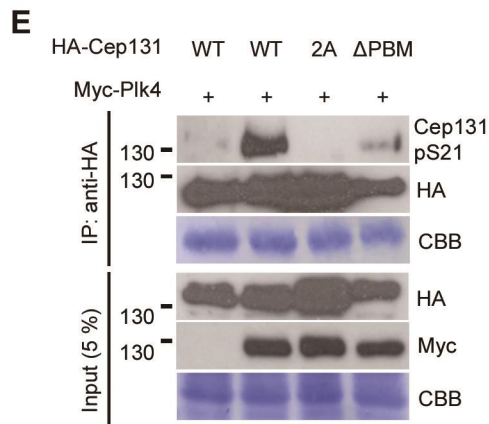
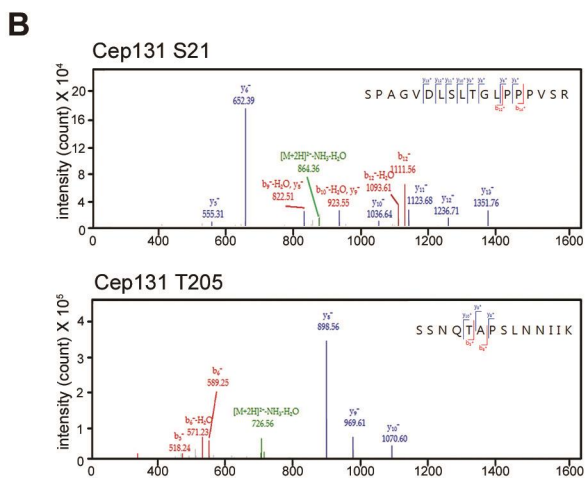
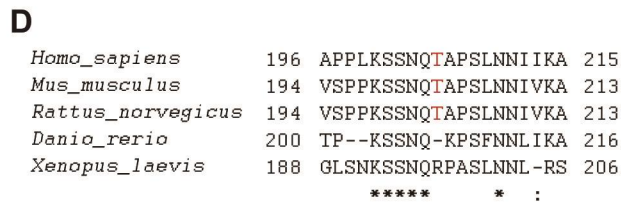
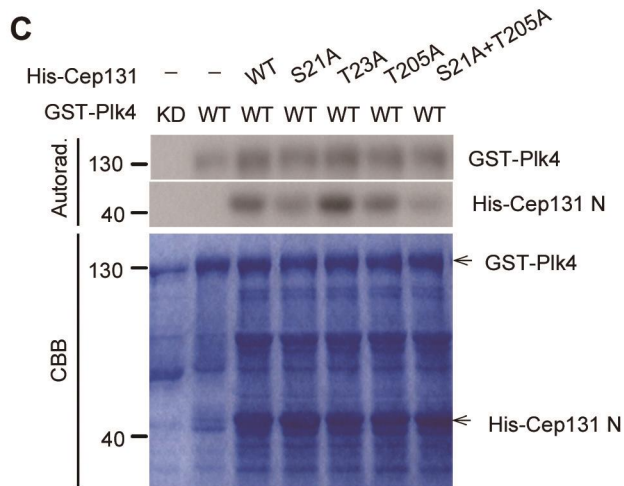
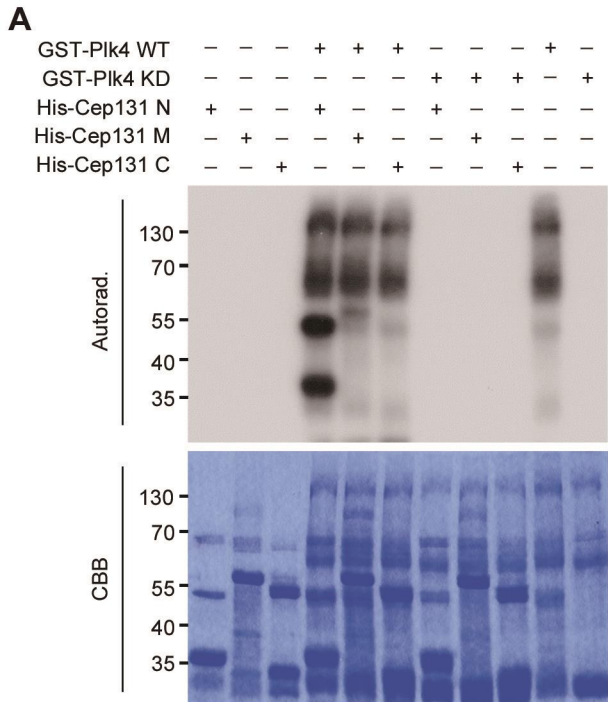
**A**

Cent+Ninein+Cep131

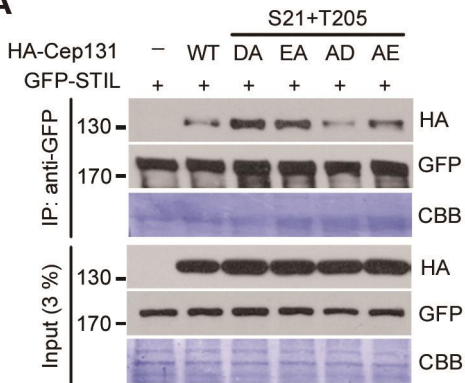
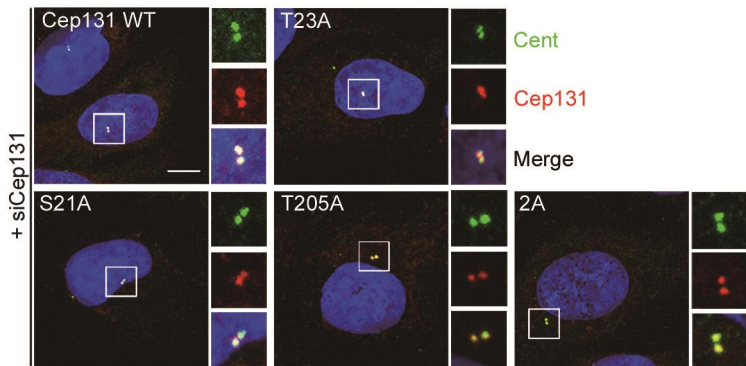
**B****C****Figure S3**

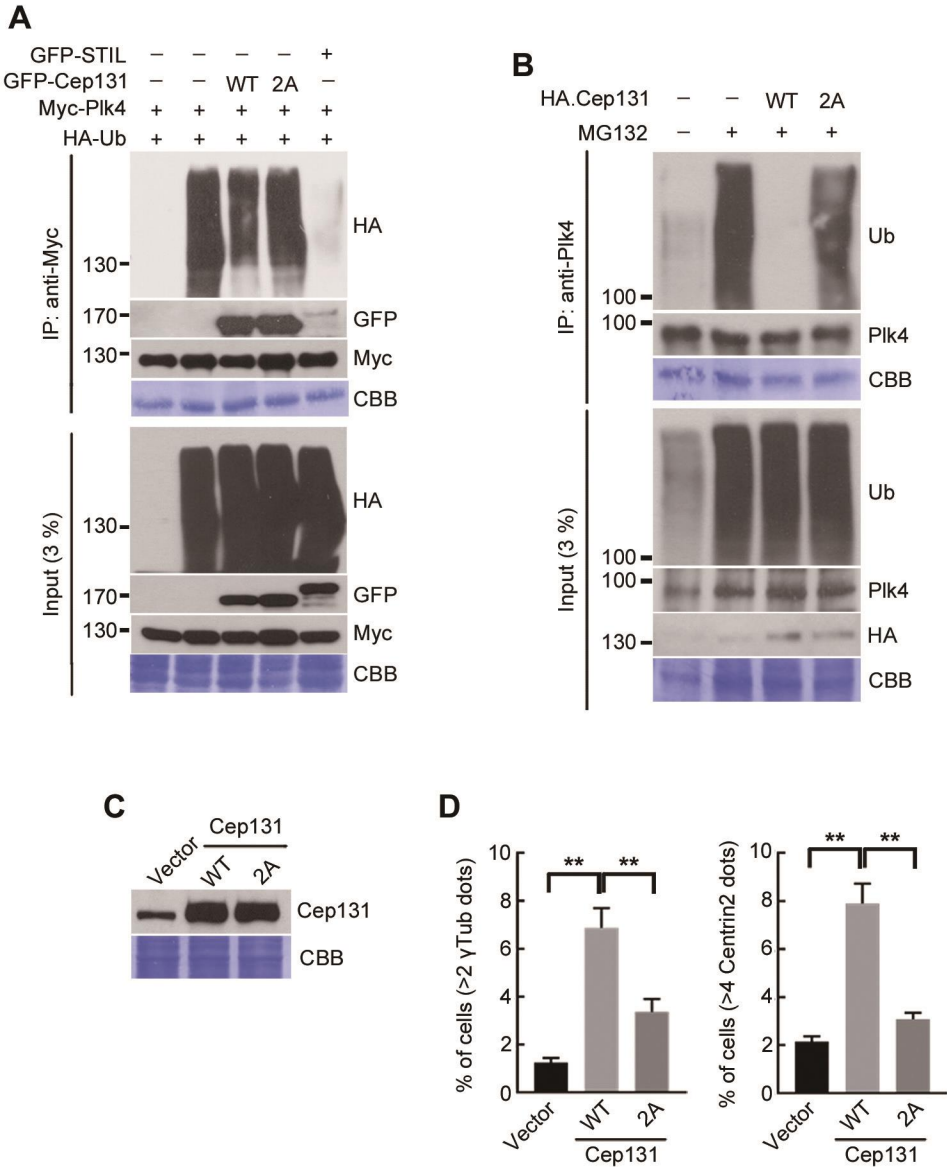


**Figure S4**



**Figure S5**

**A****B****Figure S6**



**Figure S7**

# A Disease summary for Cep131 (mRNA)

Analysis Type by Cancer	Cancer Vs. Normal	Cancer vs. Cancer				
		Cancer Histology		Multi-cancer		
Bladder Cancer	6			1		
Brain and CNS Cancer		1	1	1		
Breast Cancer	2	1			1	
Cervical Cancer	2					
Colorectal Cancer	9					
Esophageal Cancer						
Gastric Cancer	1					
Head and Neck Cancer					2	
Kidney Cancer			1	1		
Leukemia			1	1		
Liver Cancer						
Lung Cancer	1	1				
Lymphoma						
Melanoma			1	1		
Myeloma						
Other Cancer						
Ovarian Cancer						
Pancreatic Cancer						
Prostate Cancer						
Sarcoma				1		
Significant Analyses	21	3	4	4	2	2
Total Unique Analyses	271		467		142	



Cell color is determined by the best gene rank percentile for the analyses within the cell.

NOTE: An analysis may be counted in more than one cancer type.

# B

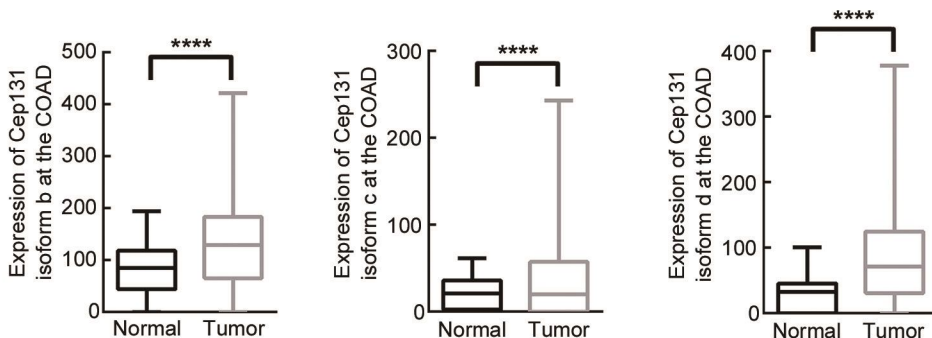


Figure S8



**A** Experimental schedule for Xenograft assay

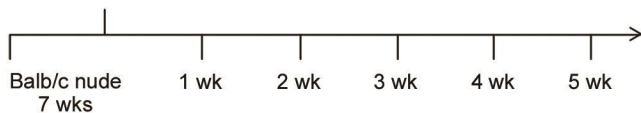
Inject HCT116 cells (4 groups)

-Vec + shGL2

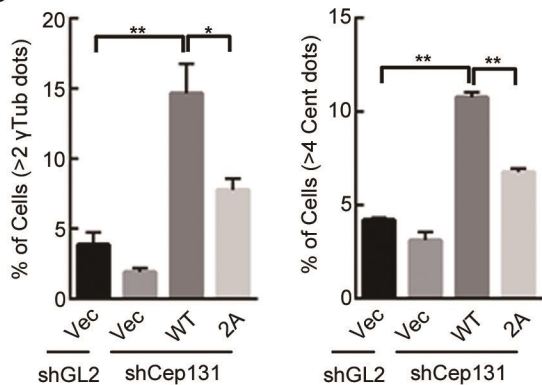
-Vec + shCep131

-Cep131 WT + shCep131

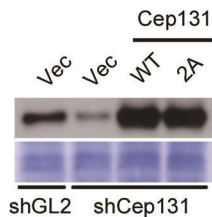
-Cep131 2A + shCep131



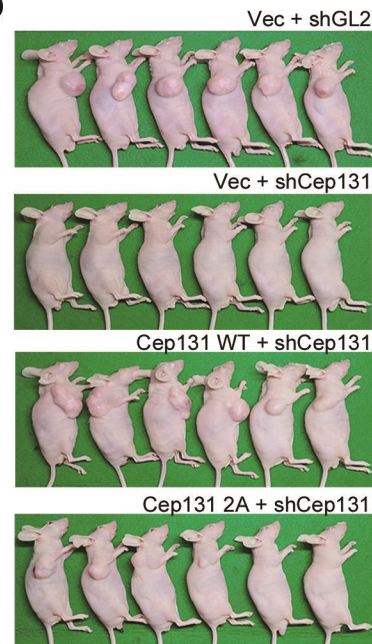
**C**



**B**



**D**



**Figure S9**