

Supplementary Information

Deletion of NFKB1 enhances canonical NF- κ B signaling and increases macrophage and myofibroblast content during tendon healing

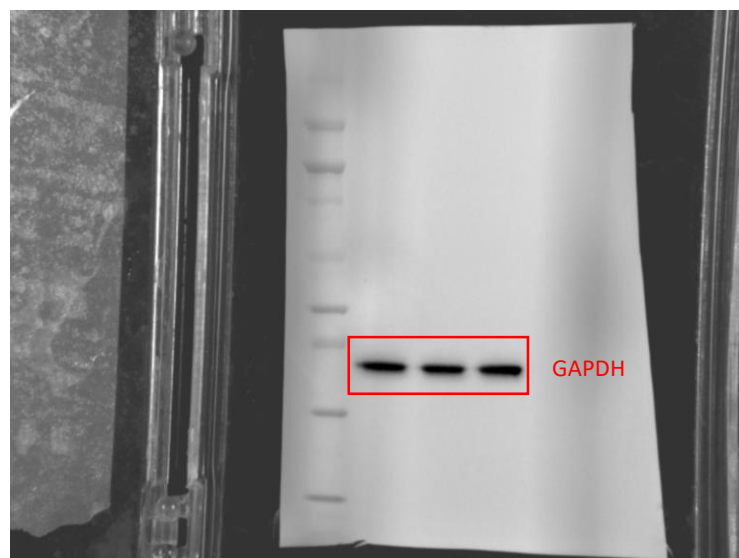
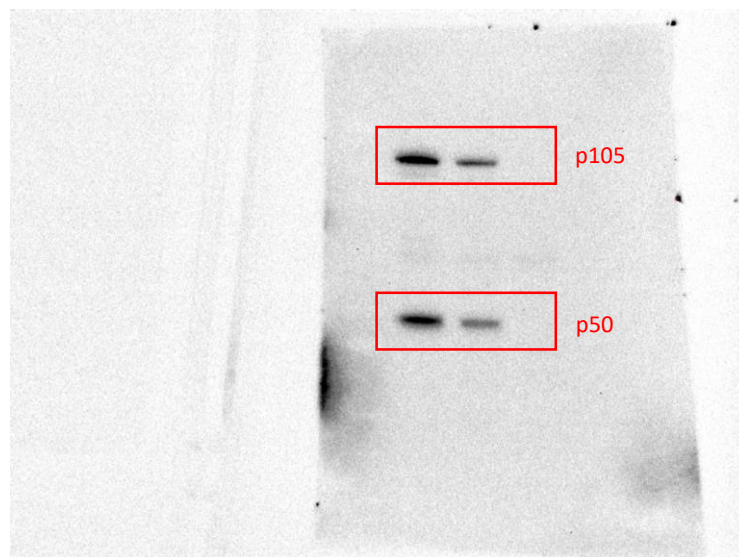
Katherine T. Best, Fredella K. Lee, Emma Knapp, Hani A. Awad, Alayna E. Loiselle

WT				<i>NFKB1</i> ^{Het}				<i>NFKB1</i> ^{KO}				
	1	2	3	4	5	6	7	8	9	10	11	12
A	Acta2 1	Acta2 1	S100a4 9	S100a4 9	Acta2 1	Acta2 1	S100a4 9	S100a4 9	Acta2 1	Acta2 1	S100a4 9	S100a4 9
B	Ccl2 2	Ccl2 2	Tnf 10	Tnf 10	Ccl2 2	Ccl2 2	Tnf 10	Tnf 10	Ccl2 2	Ccl2 2	Tnf 10	Tnf 10
C	Ccl5 3	Ccl5 3	Gapdh 11	Gapdh 11	Ccl5 3	Ccl5 3	Gapdh 11	Gapdh 11	Ccl5 3	Ccl5 3	Gapdh 11	Gapdh 11
D	Col1a1 4	Col1a1 4	Rplp0 12/Ref	Rplp0 12/Ref	Col1a1 4	Col1a1 4	Rplp0 12/Ref	Rplp0 12/Ref	Col1a1 4	Col1a1 4	Rplp0 12/Ref	Rplp0 12/Ref
E	Col3a1 5	Col3a1 5	Rps18 13/Ref	Rps18 13/Ref	Col3a1 5	Col3a1 5	Rps18 13/Ref	Rps18 13/Ref	Col3a1 5	Col3a1 5	Rps18 13/Ref	Rps18 13/Ref
F	Emr1 6	Emr1 6	gDNA gDNA	PCR PCR	Emr1 6	Emr1 6	gDNA gDNA	PCR PCR	Emr1 6	Emr1 6	gDNA gDNA	PCR PCR
G	Hif1a 7	Hif1a 7	RQ1 RQ 1	RQ2 RQ 2	Hif1a 7	Hif1a 7	RQ1 RQ 1	RQ2 RQ 2	Hif1a 7	Hif1a 7	RQ1 RQ 1	RQ2 RQ 2
H	Il1b 8	Il1b 8	RT RT	Empty	Il1b 8	Il1b 8	RT RT	Empty	Il1b 8	Il1b 8	RT RT	Empty
	1	2	3	4	5	6	7	8	9	10	11	12

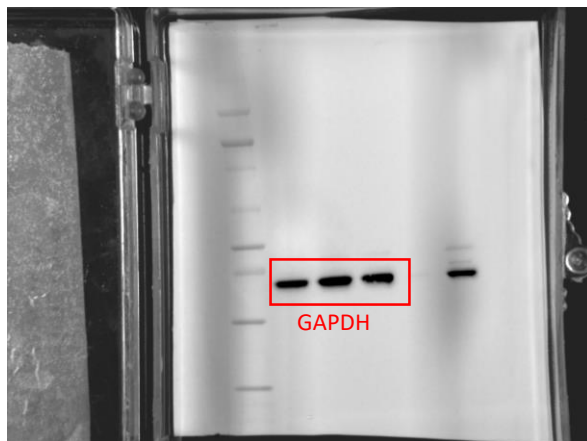
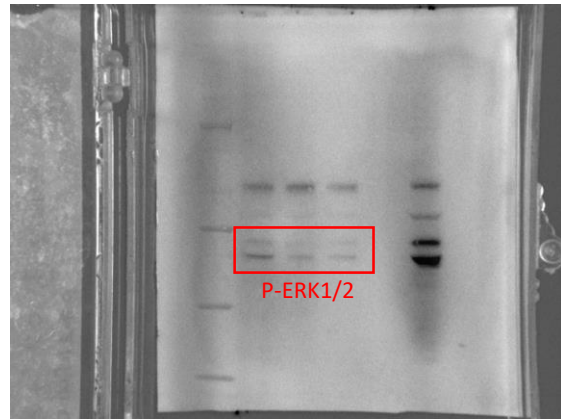
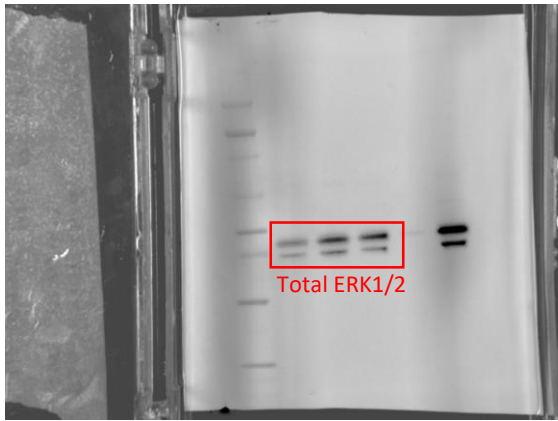
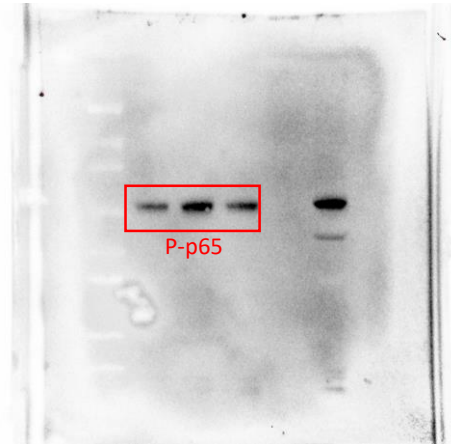
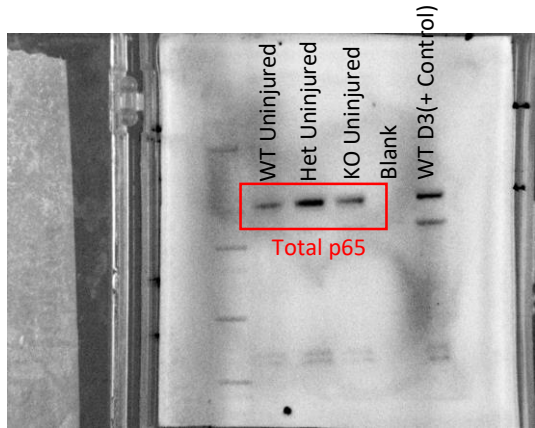
Emr1 is also known as *Adgre1* and is referred to as such in text.

Supplemental Figure 1. Custom PCR Array Plate. Custom Biorad PrimePCR array plate containing genes related to matrix deposition, macrophages, myofibroblasts, and inflammation. Three housekeeping genes (*Gapdh*, *Rplp0*, and *Rps18*) were included.

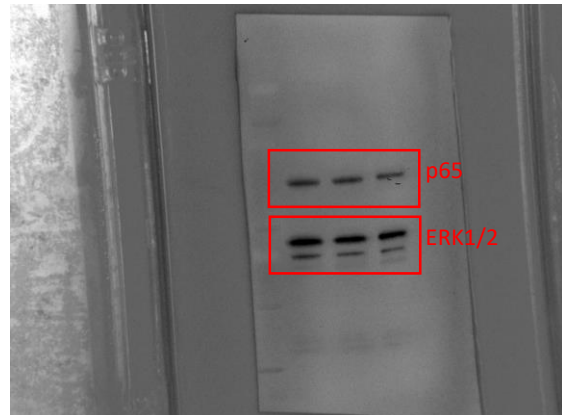
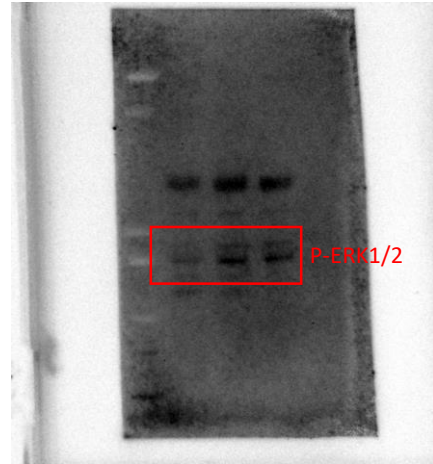
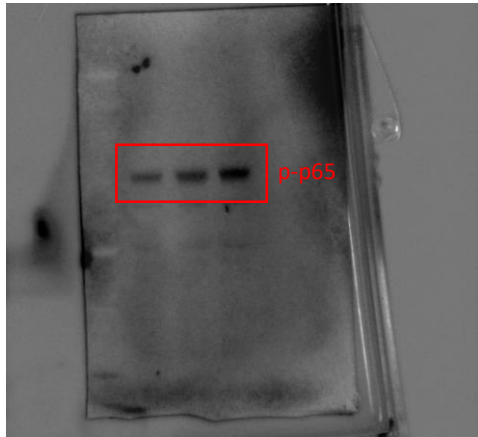
Full Unedited Gels for Figure 1



Full Unedited Gels for Figure 2 (Uninjured)



Full Unedited Gels for Figure 2 (Day 3 Repair)



Full Unedited Gels for Figure 2 (Day 14 Repair)

