

Supplementary Information

**Establishment of a Murine Salivary Pro-Acinar Cell Line to Characterize Roles
for FGF2 and $\alpha 3\beta 1$ Integrin in Regulating Pro-Acinar Characteristics**

Renée F. Thiemann¹, Deirdre A. Nelson², C. Michael DiPersio³,
Melinda Larsen² and Susan E. LaFlamme^{1*}

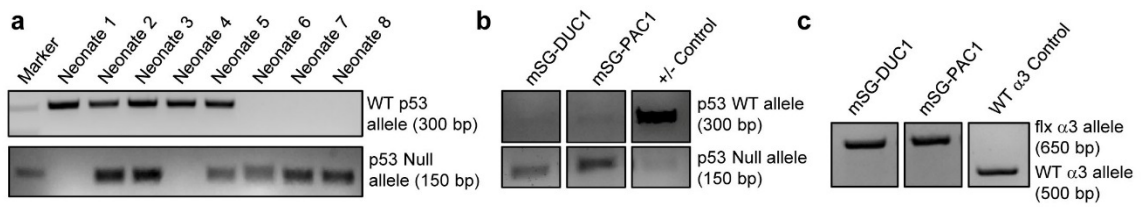


Figure S1. Ductal & pro-acinar cell lines are homozygous for the floxed (flx) integrin α 3 subunit allele and p53 null allele. (A) PCR analysis of genomic DNA from P2 neonates used for SMG isolation and dissection. **(B)** PCR analysis of genomic DNA from the ductal and pro-acinar cell lines for **(B)** the p53 null allele, and **(C)** the integrin α 3 floxed allele.

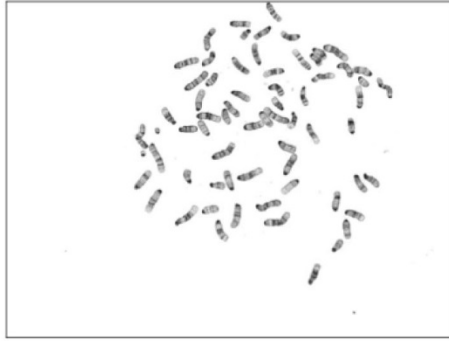


Figure S2. G-banded karyotype of mSG-PAC1 cell line.

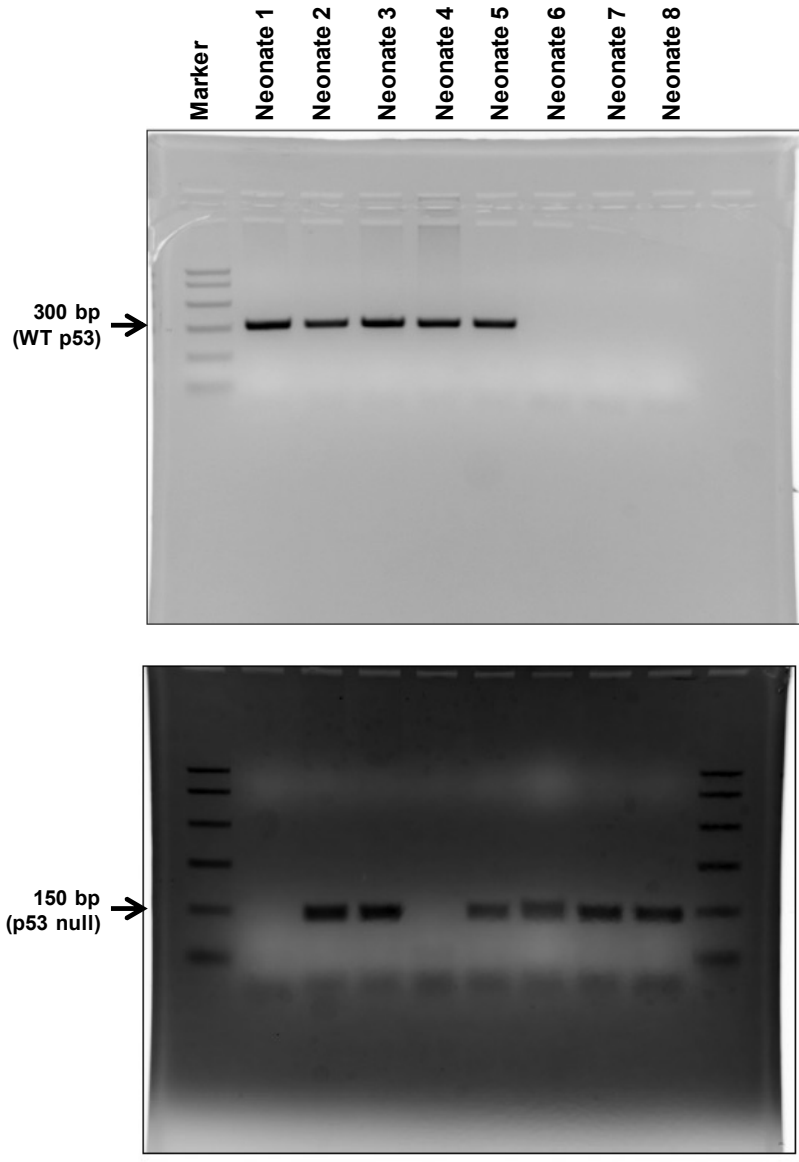


Figure S3. Images of full-length gels for Fig. S1A.

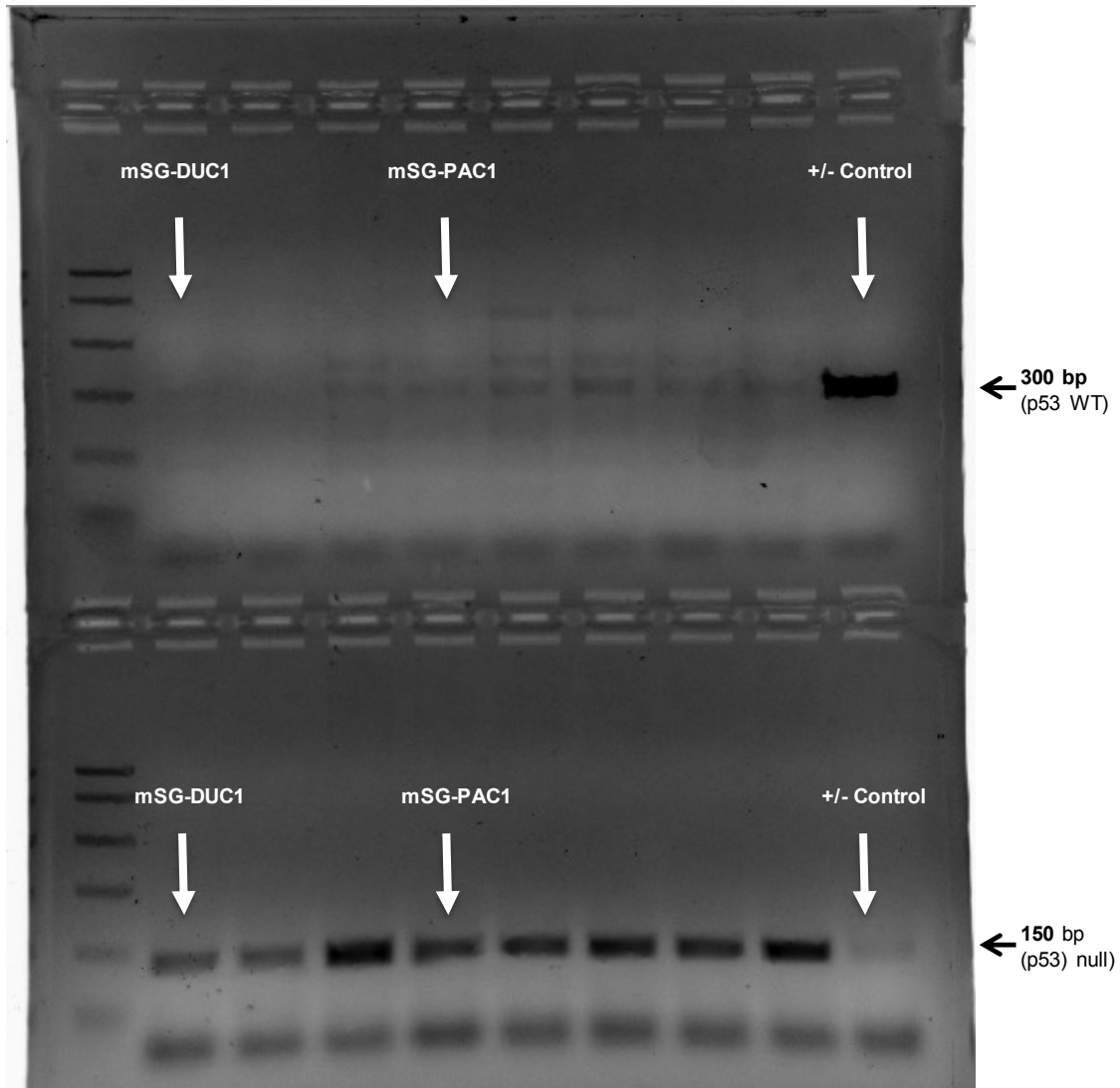


Figure S4. Images of full-length gels for Fig. S1B. The lanes representing cell lines used in this study are indicated by arrows and labeled.

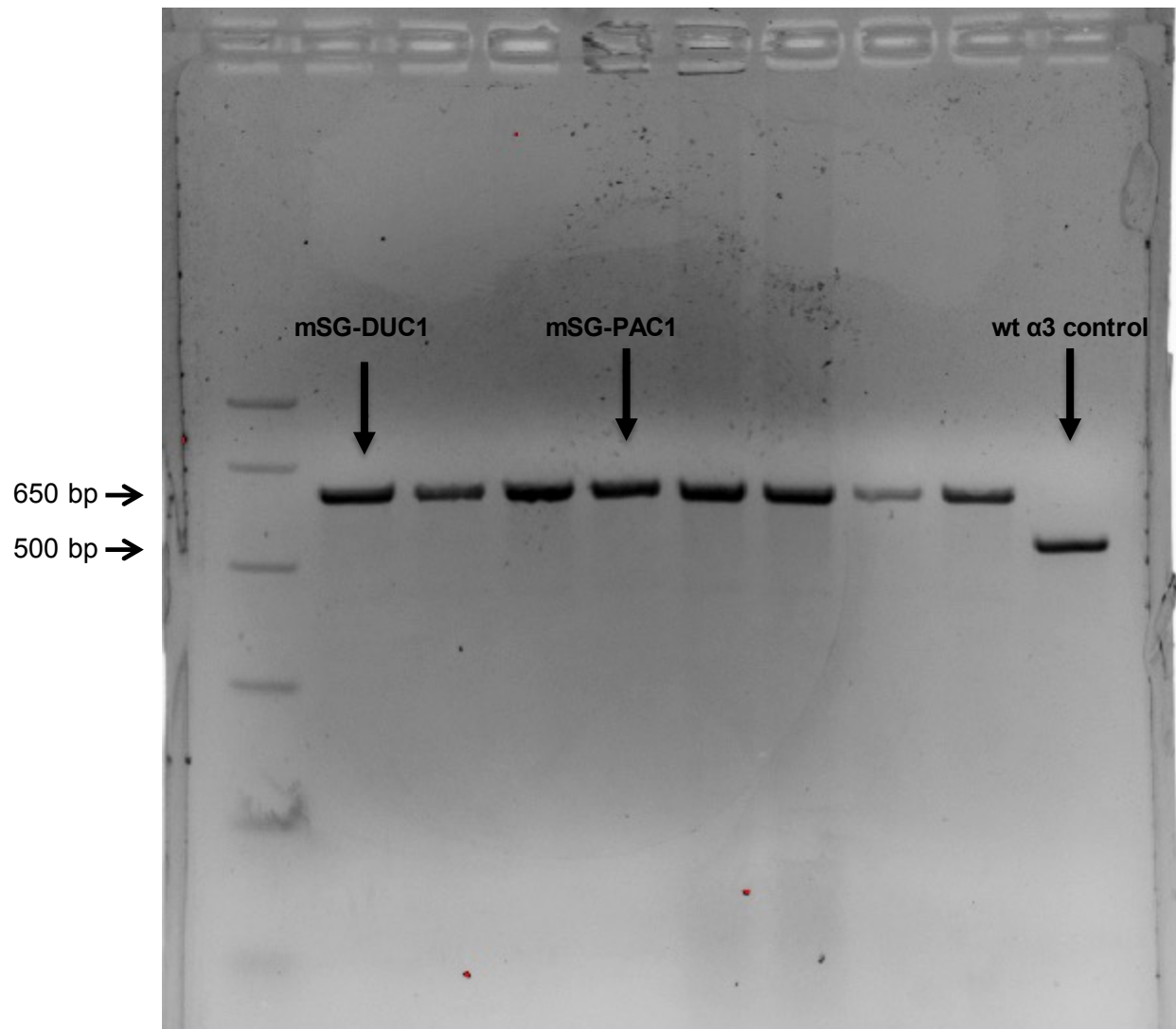


Figure S5. Images of full-length gels for Fig. S1C. The lanes representing cell lines used in this study are indicated by arrows and labeled.

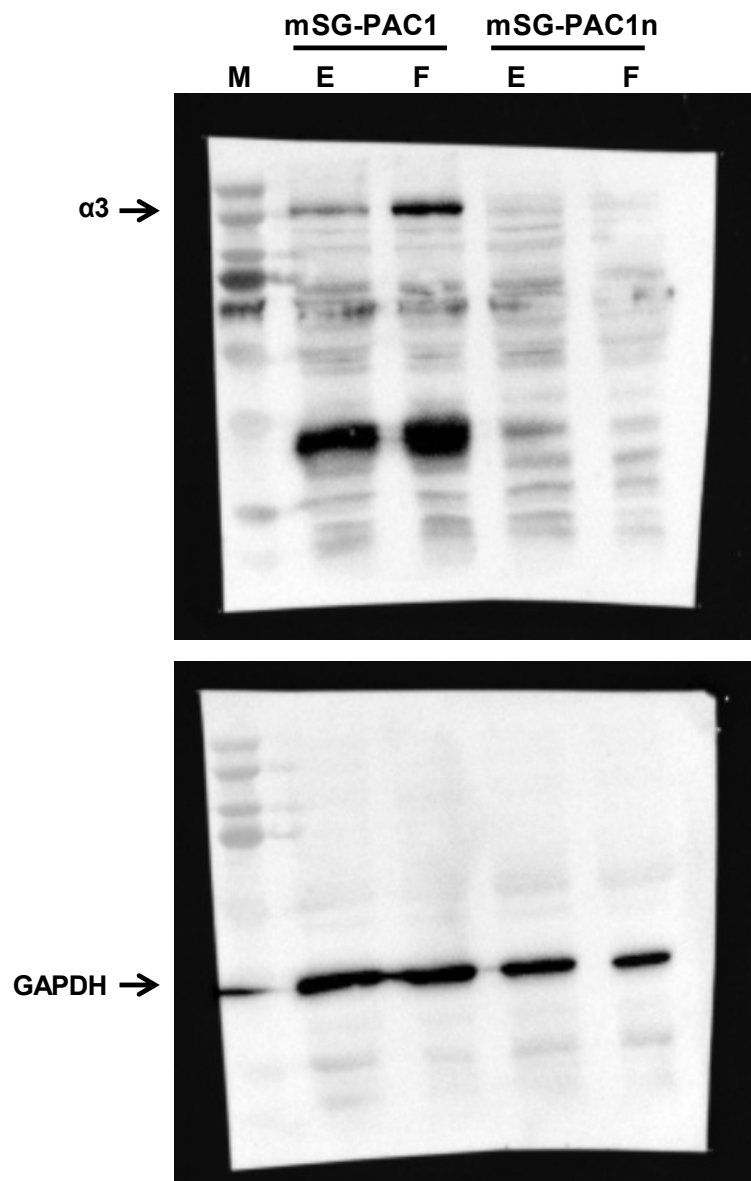


Figure S6. Images of full-length blots for Fig. 5C.

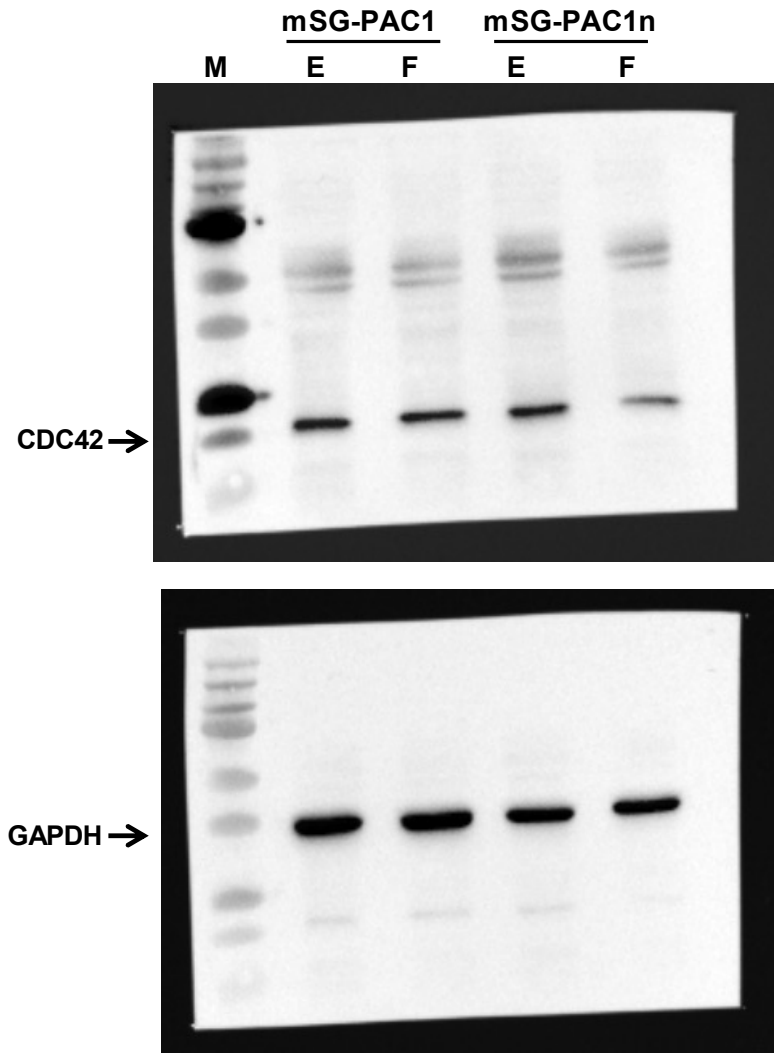


Figure S7. Images of full-length blots for Fig. 6C.

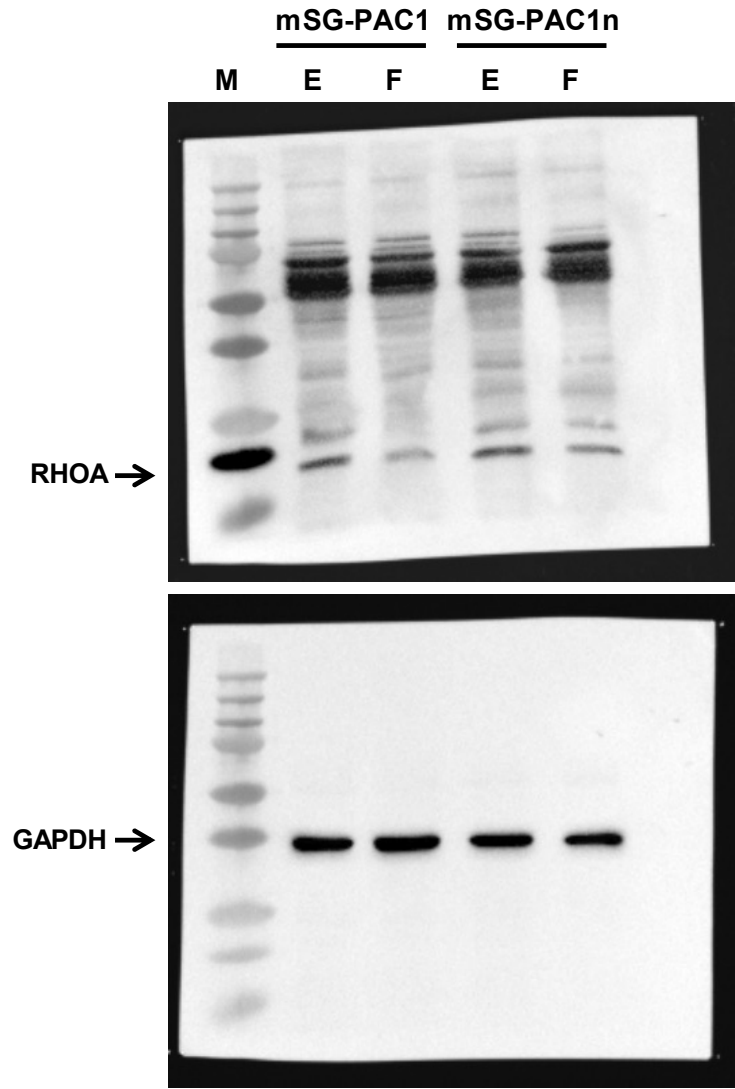


Figure S8. Images of full-length blots for Fig. 6D.