

Figure S1. Transfection efficiencies. RT-qPCR results confirmed elevated miR-198 after (A) mimic transfection and (B) stable lentivirus transduction. Values relative to samples with control mimic/lentivirus, with RNU6-2 used as a reference gene for normalization. (C) RT-qPCR and (D) western blot results demonstrating knockdown of MIB1 using siRNA. PCR abundance relative to samples transfected with control siRNA and normalized to GAPDH. MIB1, mindbomb E3 ubiquitin protein ligase 1.

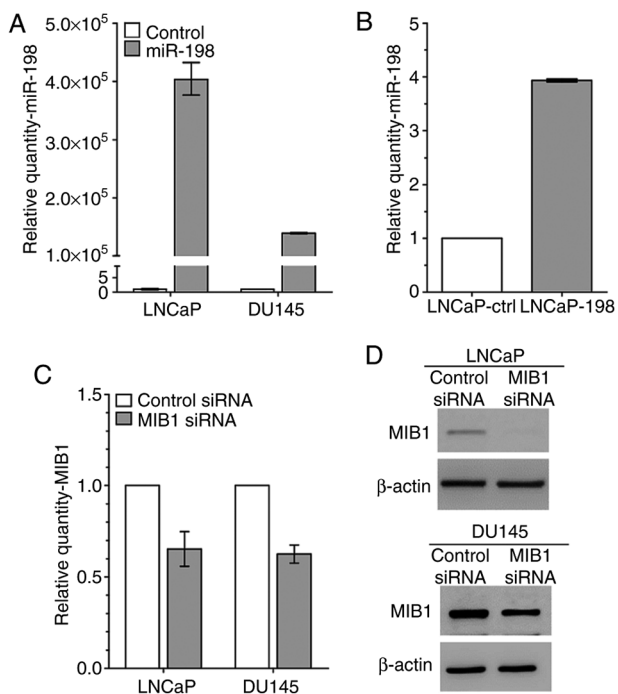


Figure S2. Notch-luciferase activity in LS174T cells. Treatment with Notch inhibitor DAPT suppressed Notch-luciferase reporter activity in the colon cancer cell line LS174T, however, corresponding with their effects in LNCaP cells, luciferase activity remained unchanged by miR-198 mimic and MIB1 siRNA. Fold change was normalized to the respective experimental control. MIB1, mindbomb E3 ubiquitin protein ligase 1.

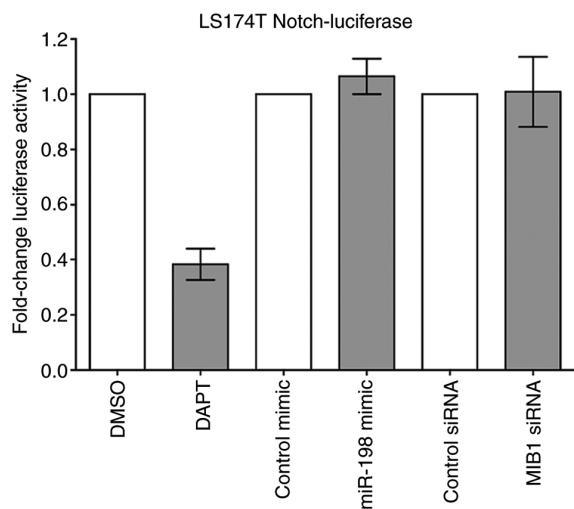


Table SI. Mimic and siRNA sequences.

Product	Sense	Antisense
Negative control mimic	UUCUCCGAACGUGUCACGUTT	ACGUGACACGUUCGGAGAATT
miR-198 mimic	GGUCCAGAGGGGAGAUAGGUUC	ACCUAUCUCCCCUCUGGACCUU
Control siRNA	UUCUCCGAACGUGUCACGUTT	ACGUGACACGUUCGGAGAATT
MIB1 siRNA	GGAUAAAGAUGGUGAUAGATT	UCUAUCACCAUCUUUAUCCTT
	GCAUUUGAGUGUAGAGAAATT	UUUCUCUACACUCAAUGCTT
	GCAUAAGUGUCCACAUCUATT	UAGAUGUGGACACUUAUGCTT

MIB1, mindbomb E3 ubiquitin protein ligase 1.

Table SII. qRT-PCR primer sequences.

Primer	Sequence
RNU6-2	Qiagen cat. no. MS00033740
miR-198	Qiagen cat. no. MS00033824; GGUCCAGAGGGGAGAUAGGUUC
GAPDH	Forward: CAGCCTCAAGATCATCAGCA Reverse: GTCTTCTGGGTGGCAGTGAT
MIB1	Forward: ACCGGGAAGTGAGAGGGTT Reverse: GCTATGTGGGCTTGATGCAC
MIB1, mindbomb E3 ubiquitin protein ligase 1.	

Table SIII. Abundance of previously validated miR-198 targets.

Gene symbol	Identified in	qRT-PCR		Gene Array	
		DU145	LNCaP	DU145	LNCaP
Livin (BIRC7)	Prostate and lung cancer	0.6	>1	1.07	0.82
SHMT1	Lung cancer	0.9	1.25	1.12	1.01
FUT8	Colorectal cancer	0.9	1.2	0.95	1.04
CDCP1	Breast cancer	1.0	0.9	0.93	0.97
CCND2	Epithelial cells	0.75	1.25	1.1	1.03
MET	Hepatocellular carcinoma	1.0	1.15	0.96	0.95
FGFR1	Lung cancer	Nt	Nt	1.01	1.1
ROCK1	Osteosarcoma	Nt	Nt	0.82	0.99
MGMT	Glioblastoma	Nt	Nt	0.9	1.14
MSLN	Pancreatic cancer	Nt	Nt	1.25	0.91

Nt, not tested.