

Supplementary Online Content

Liu C-M, Lee CT-C. Association of hearing loss with dementia. *JAMA Netw Open*. 2019;2(7):e198112. doi:10.1001/jamanetworkopen.2019.8112

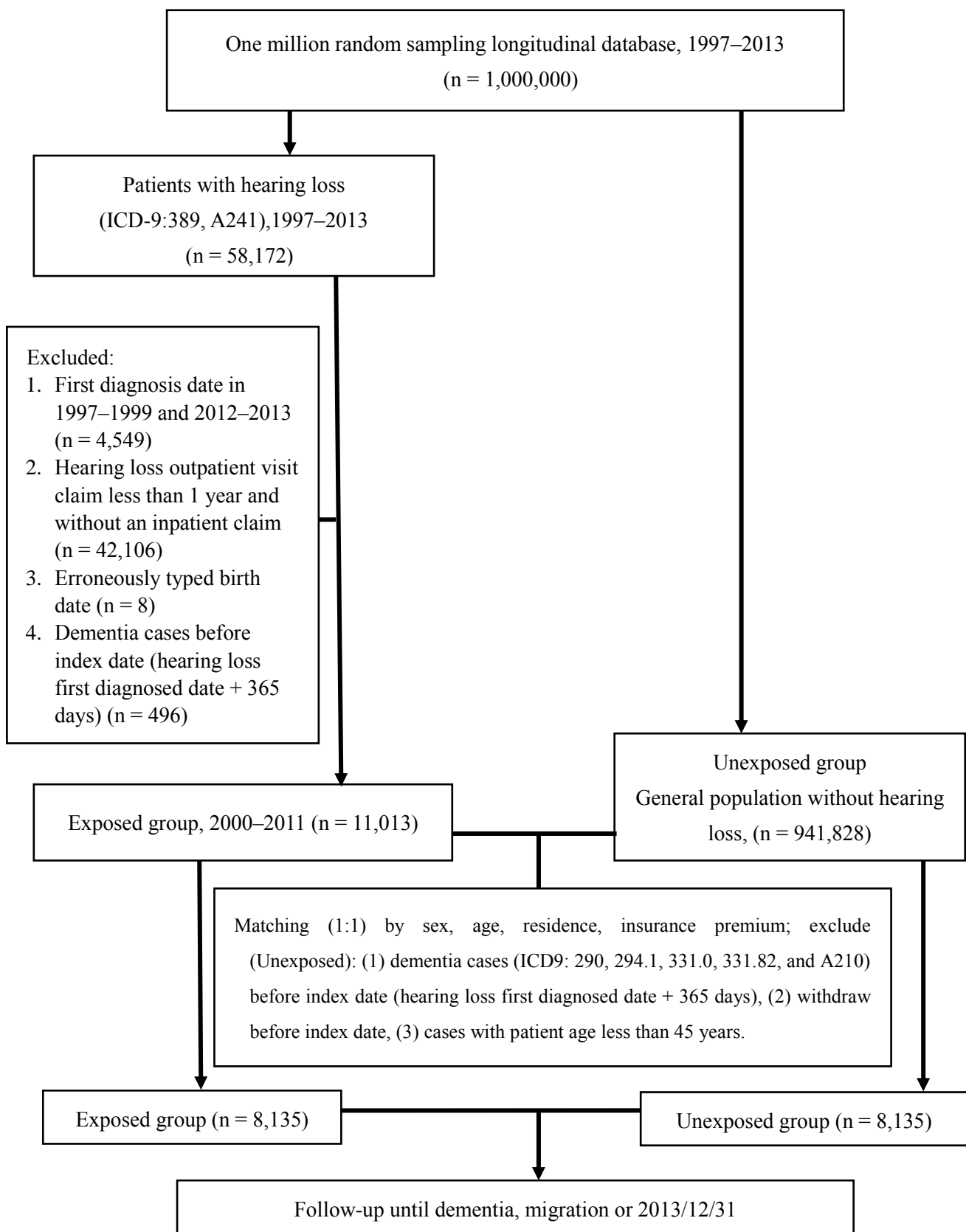
eFigure 1. Flowchart of Database Assembly and Cohort Study Cases Selection

eFigure 2. Age Distribution in Non-Hearing Loss and Hearing Loss Groups

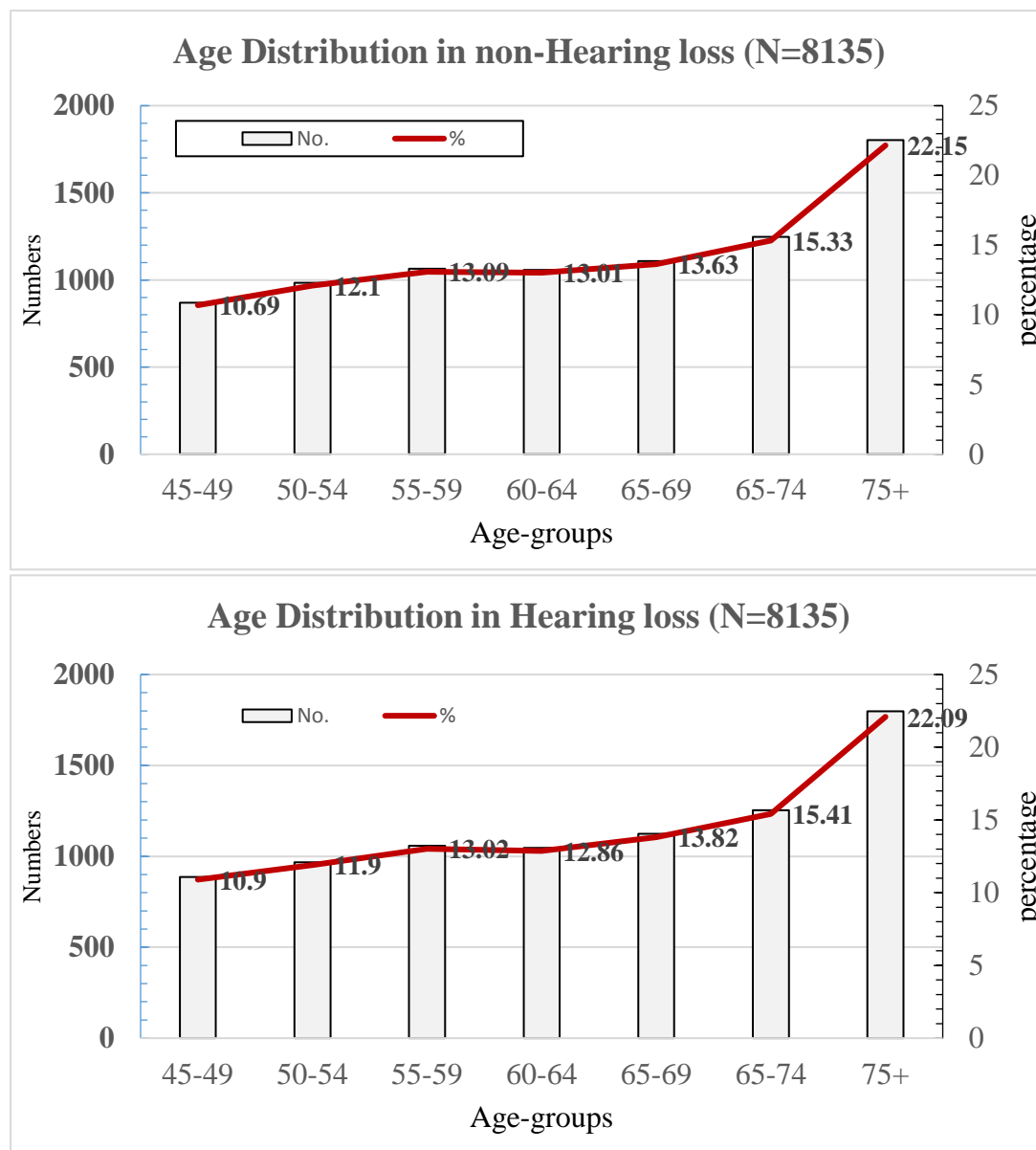
eTable. Effect of Hearing Loss on Dementia in Taiwan by Sex and Age Groups, Cohort Study, 2000 to 2011

This supplementary material has been provided by the authors to give readers additional information about their work.

eFigure 1. Flowchart of Database Assembly and Cohort Study Cases Selection



eFigure 2. Age Distribution in Non-Hearing Loss and Hearing Loss Groups



eTable. Effect of Hearing Loss on Dementia in Taiwan by Sex and Age Groups, Cohort Study, 2000 to 2011

Subgroup analysis	Exact matching					Propensity score matching		
	Incidence rate (95% CI) (1,000 person-years)		Adjusted ^a analysis		FDR,	Adjusted ^a analysis		FDR,
	HL	non-HL	HR (95% CI)	<i>P</i>	<i>P</i>	HR (95% CI)	<i>P</i>	<i>P</i>
Total	19.38 (18.25-20.57)	13.98(13.01-15.00)	1.17 (1.07 - 1.29)	0.001	0.003	1.11 (1.01 - 1.22)	0.02	0.05
Gender								
Female	17.74 (16.10-19.50)	13.53 (12.10-15.09)	1.13 (0.97 - 1.30)	0.11	0.21	1.18 (1.02 - 1.35)	0.02	0.05
Male	20.62 (19.08-22.25)	14.32 (13.03-15.71)	1.20 (1.06 - 1.36)	0.003	0.008	1.07 (0.95 - 1.21)	0.29	0.42
Age group(years)								
45-64	5.46 (4.53-6.53)	2.12 (1.56-2.83)	2.21(1.57 - 3.12)	<0.001	<0.001	1.40 (1.12 - 1.75)	0.004	0.01
65-74	20.00 (18.27-21.86)	15.49 (13.95-17.14)	1.13 (0.99 - 1.30)	0.07	0.13	1.09 (0.94 - 1.27)	0.25	0.41
≥75+	48.20 (44.01-52.68)	38.36 (34.48-42.57)	1.07 (0.93 - 1.24)	0.32	0.46	1.01 (0.88 - 1.15)	0.89	0.93

^aAdjusted for sex, age, residence, insurance premium, coronary artery disease, chronic obstructive pulmonary disease, cerebrovascular disease, diabetes, chronic kidney disease, hypertension, hyperlipidemia, anxiety, depression, alcohol related illness, head injury, rheumatoid arthritis, asthma, length of hospital stay.

Abbreviation HR: hazard ratio; CI = confidence interval; FDR=False discovery rate HL= Hearing Loss.