

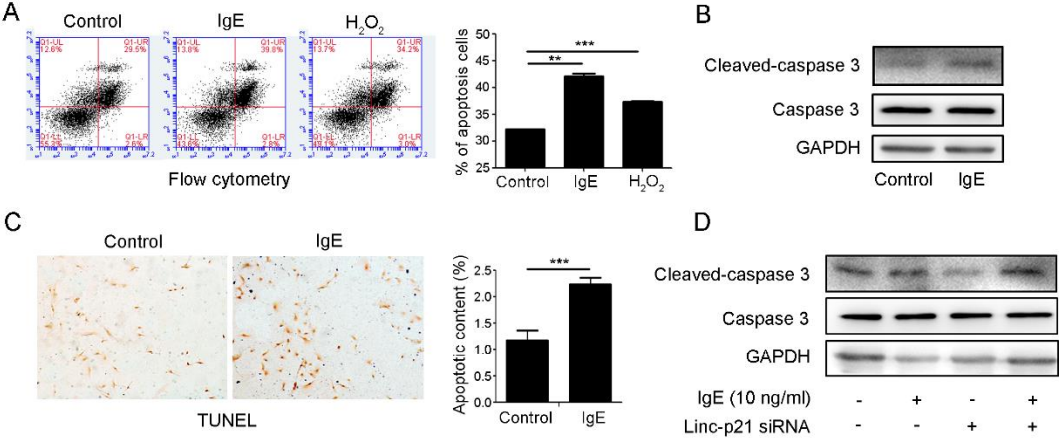
SUPPLEMENTARY DATA

IgE Aggravates the Senescence of Smooth Muscle Cells in Abdominal Aortic Aneurysm by Upregulating LincRNA-p21

Wenjun Guo[#], Ran Gao[#], Wei Zhang[#], Weipeng Ge, Meng Ren, Bolun Li, Hongmei Zhao, Jing Wang^{*}

State Key Laboratory of Medical Molecular Biology, Institute of Basic Medical Sciences, Chinese Academy of Medical Sciences, Department of Pathophysiology, Peking Union Medical College, Beijing, China

SUPPLEMENTARY DATA



Supplementary Figure 1. IgE effect on apoptosis of vascular SMCs *in vitro*. (A) Flow cytometry detection of apoptosis of human vascular smooth muscle cells. (B) Western blotting analysis of cleaved-caspase 3 and caspase 3 expression in human vascular smooth muscle cells stimulated by IgE. (C) Representative images from TUNEL staining of human vascular smooth muscle cells. (D) Western blotting analysis of cleaved-caspase 3 and caspase 3 expression in human vascular smooth muscle cells stimulated by IgE and Linc-p21 siRNA. Data information: Data are presented as mean ± SEM. *P < 0.05; **P < 0.01; ***P < 0.001.