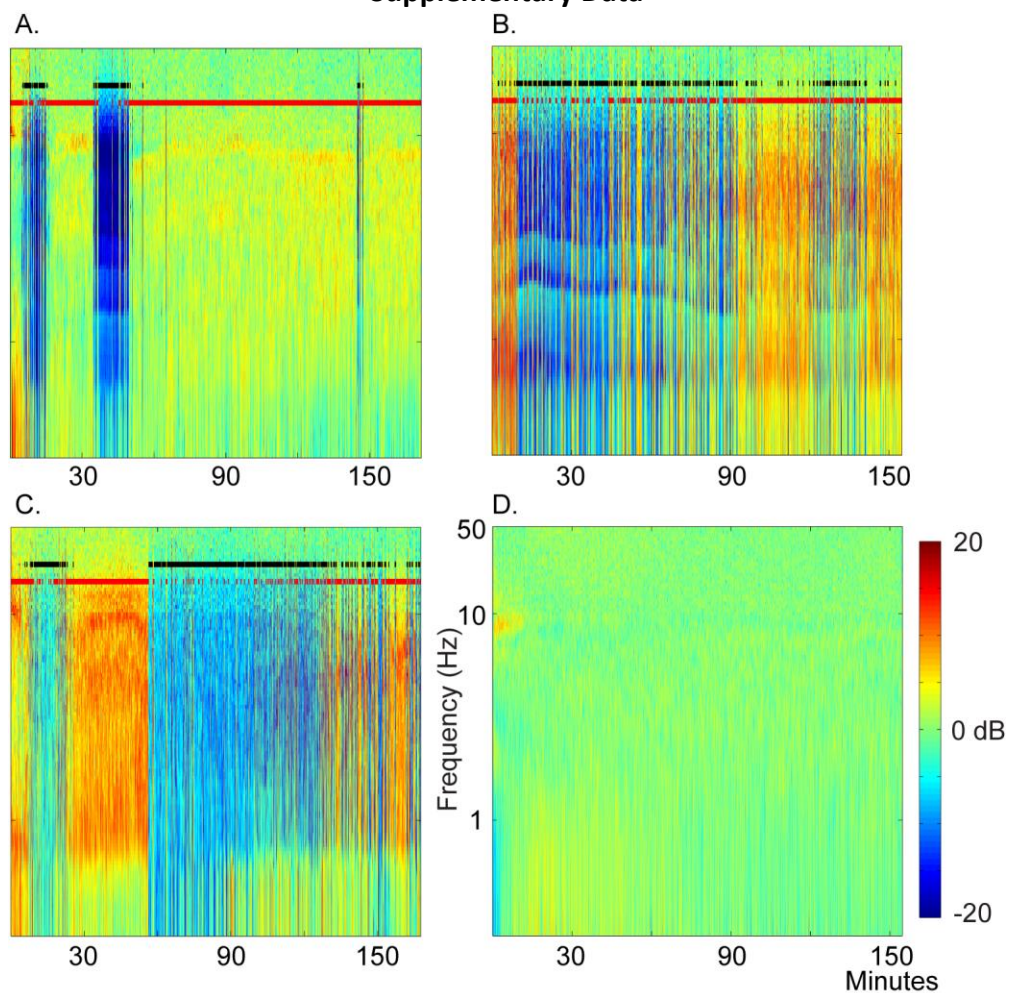
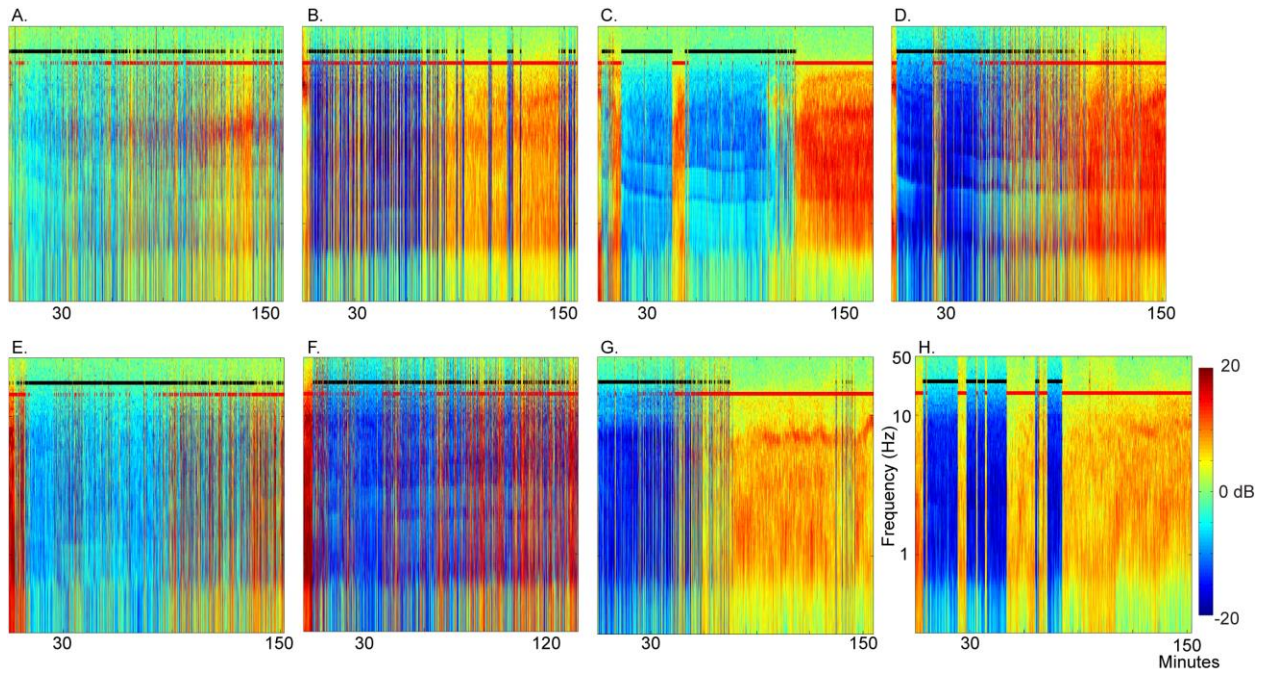


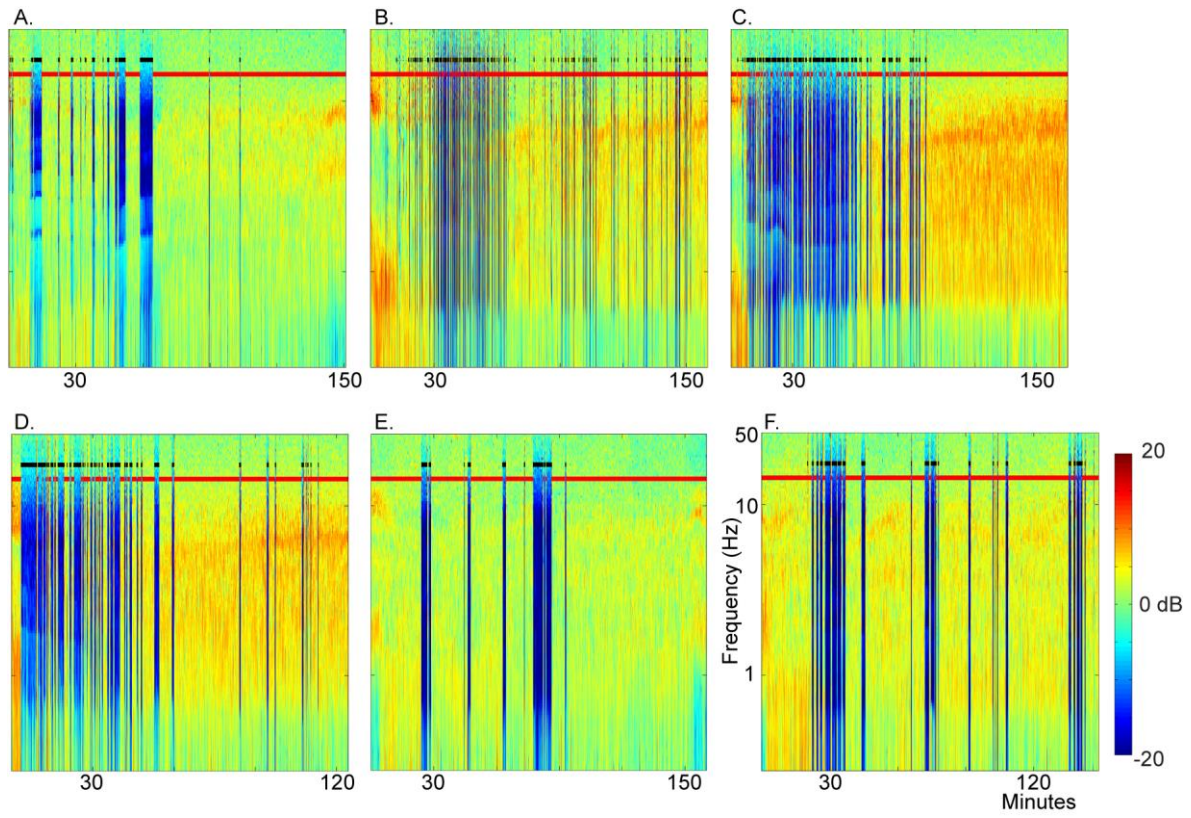
Supplementary Data



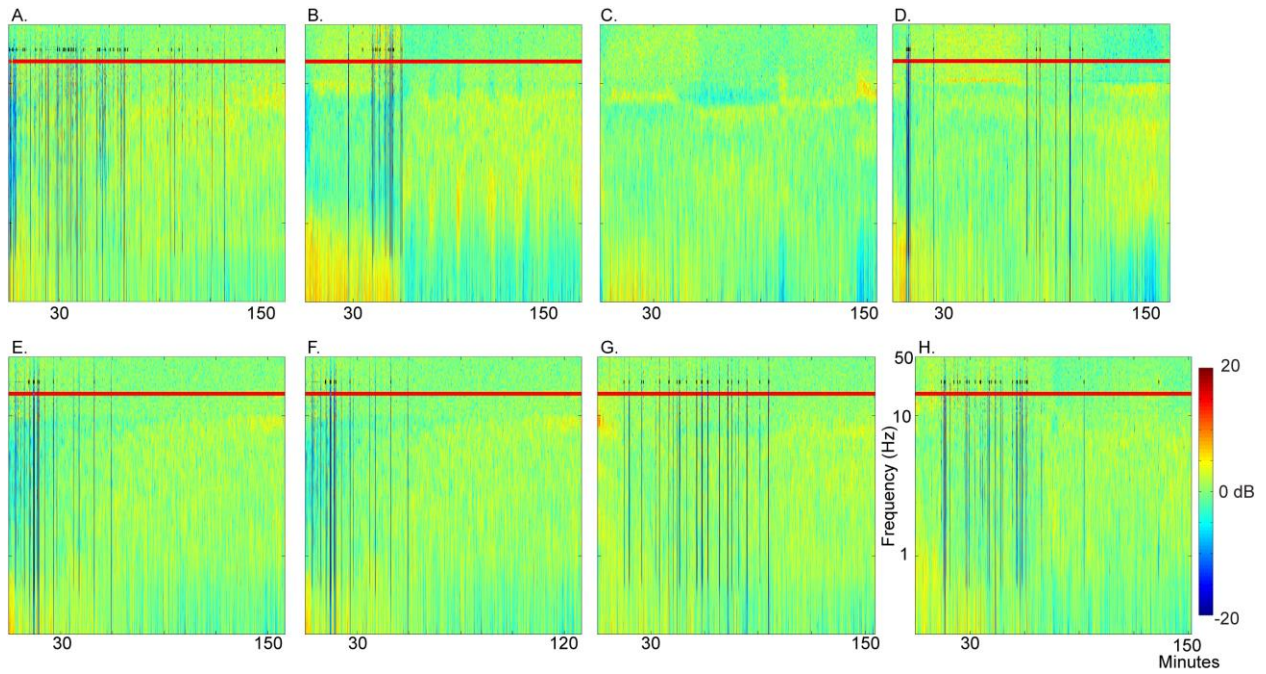
Supplementary Figure 1. Subjects from Figure 3 with the addition of suppression (black) and non-suppression (red) classification times overlaid on their respective spectrograms for subjects in A-C. The subject in D does not show any suppression.



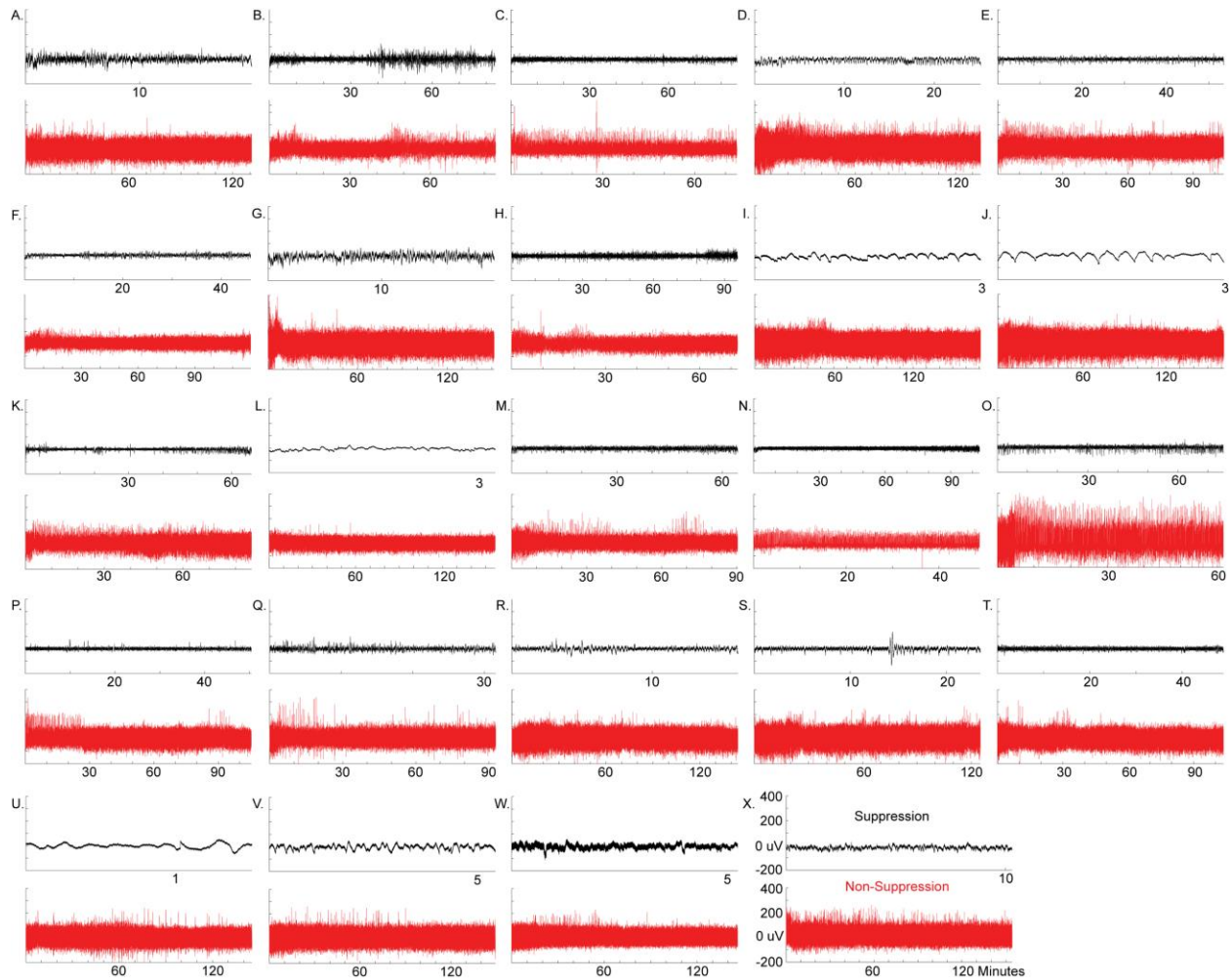
Supplementary Figure 2. Spectrograms with suppression (black) and non-suppression (red) classification times overlaid for subjects with >30% of their recording spent in suppression.



Supplementary Figure 3. Spectrograms with suppression (black) and non-suppression (red) classification times overlaid for subjects with 10-30% of their recording spent in suppression.



Supplementary Figure 4. Spectrograms with suppression (black) and non-suppression (red) classification times overlaid for subjects with <10% of their recording spent in suppression. The subject in C did not show any suppression.



Supplementary Figure 5. Time series data underlying spectrograms corresponding to suppression (black traces) or non-suppression (red traces) classification times. Seconds classified as either suppression or non-suppression are concatenated together in each trace. Note that the relative amount of suppression or non-suppression varies from subject-to-subject. For each subject, the traces corresponding to suppression times are lower in amplitude than the traces corresponding to non-suppression times.