

SUPPLEMENTARY FIGURES

(Incidence of Ductal Carcinoma in Situ in the United States, 2000-2014, Ryser et al.)

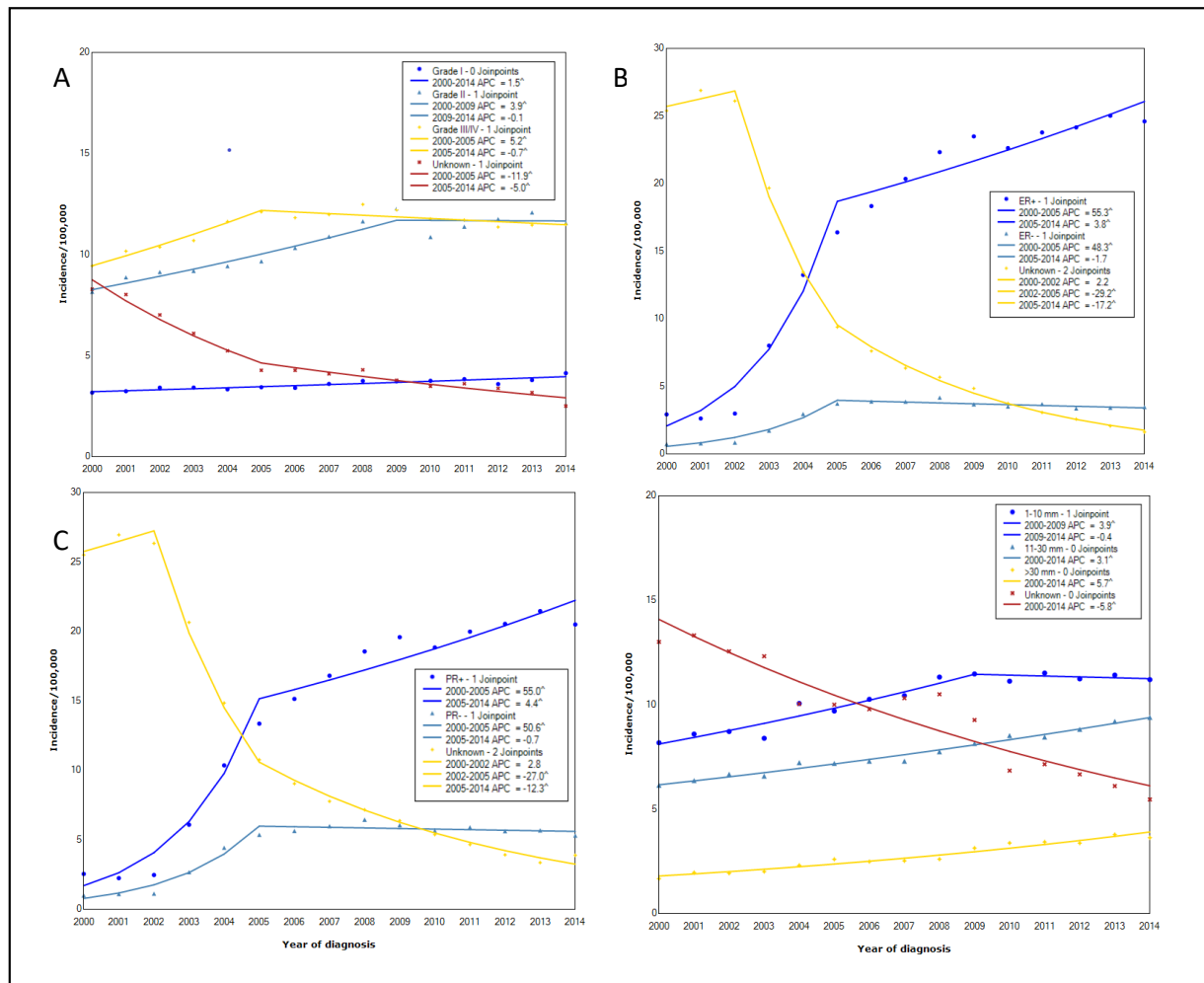


Figure S1: Age-adjusted ductal carcinoma in situ (DCIS) incidence trends, by grade (A), estrogen receptor (ER) status (B), progesterone (PR) status (C) and tumor size (D), 2000-2014.