

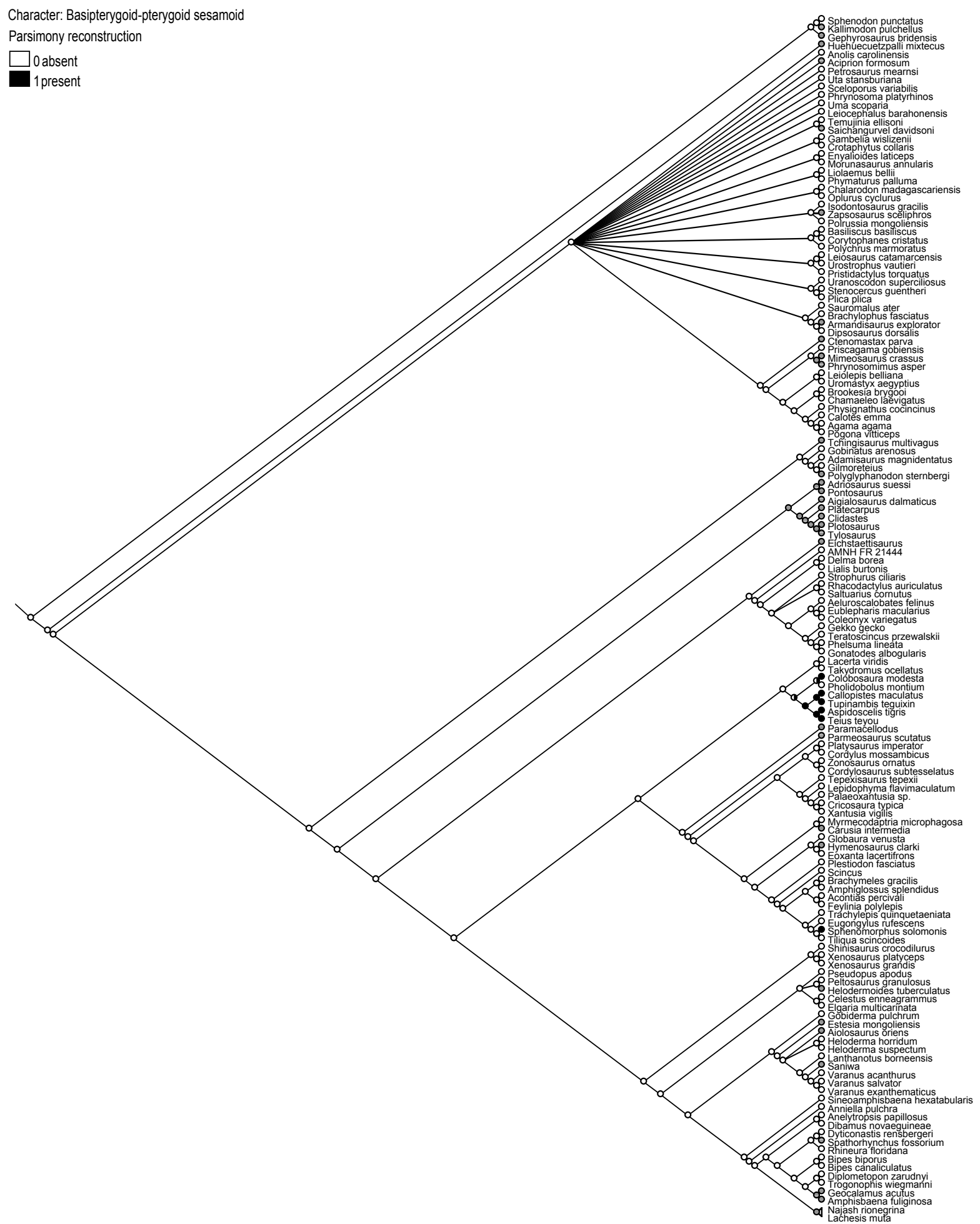
Parsimony ancestral state reconstructions of sesamoids and lunulae, using MESQUITE version 3.10

Reconstructions over the morphology-based strict consensus tree of Gauthier et al. (2012)

Character: Basipterygoid-pterygoid sesamoid

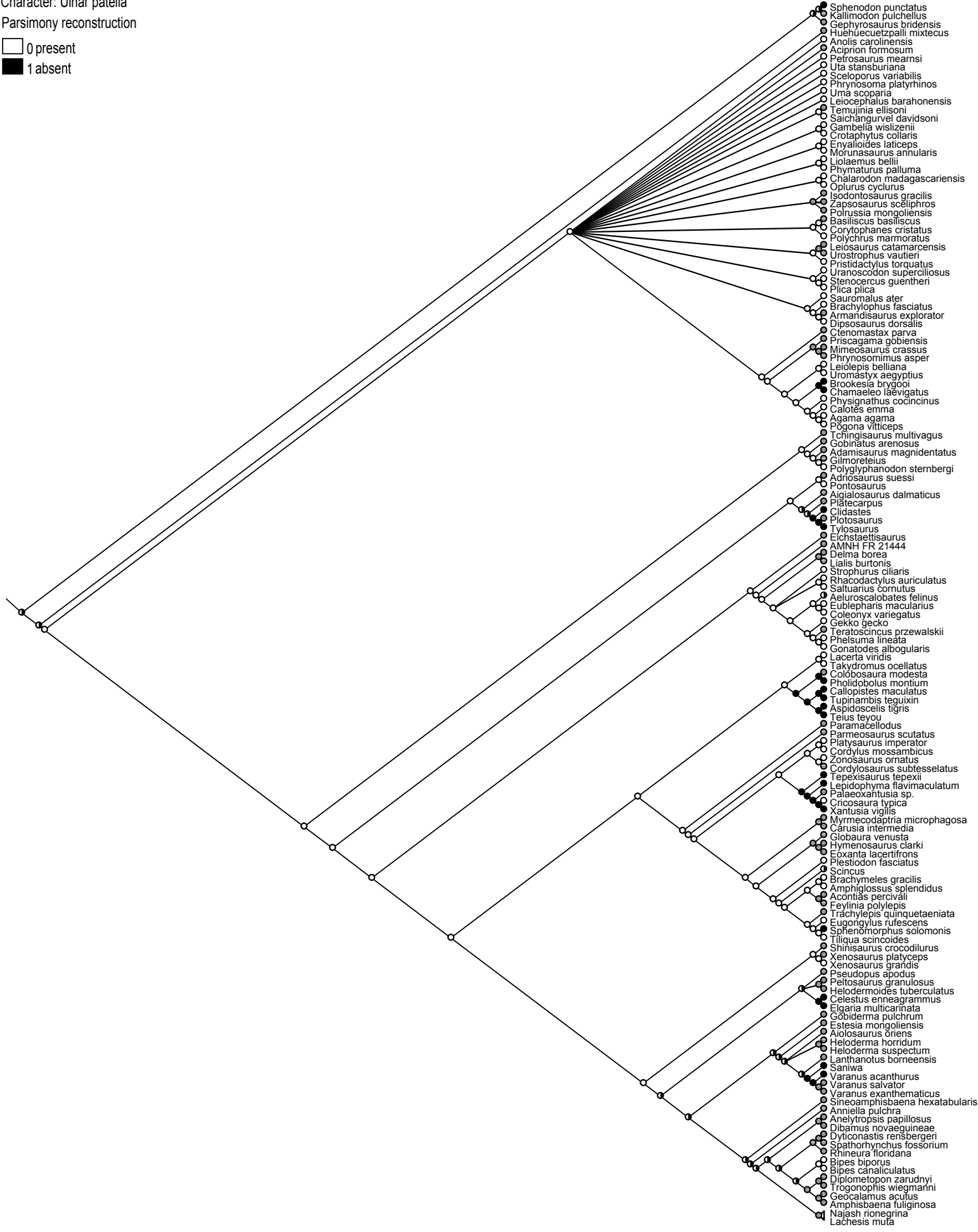
Parsimony reconstruction

□ 0 absent  
■ 1 present



Character: Ulnar patella  
Parsimony reconstruction

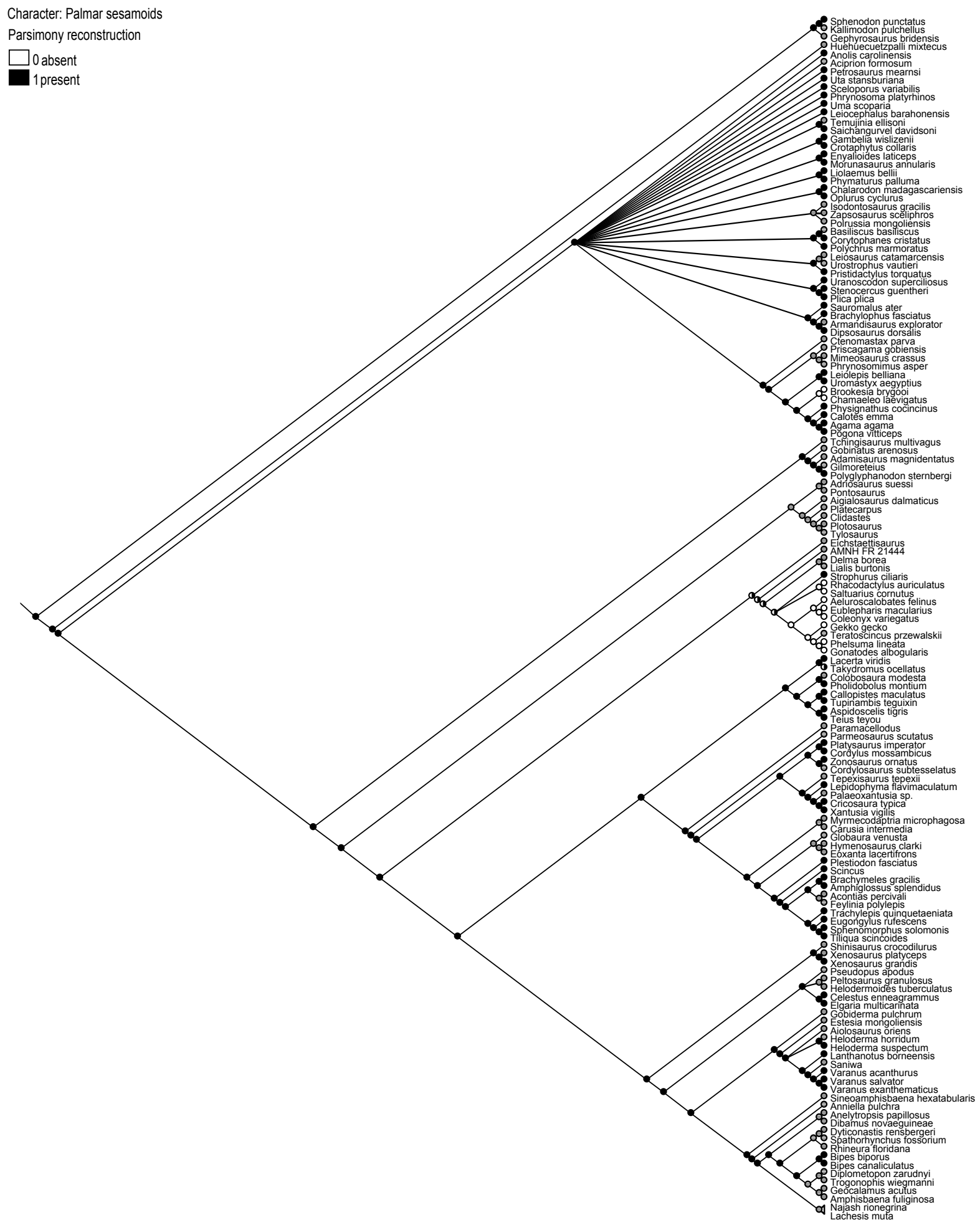
0 present  
1 absent



Character: Palmar sesamoids

Parsimony reconstruction

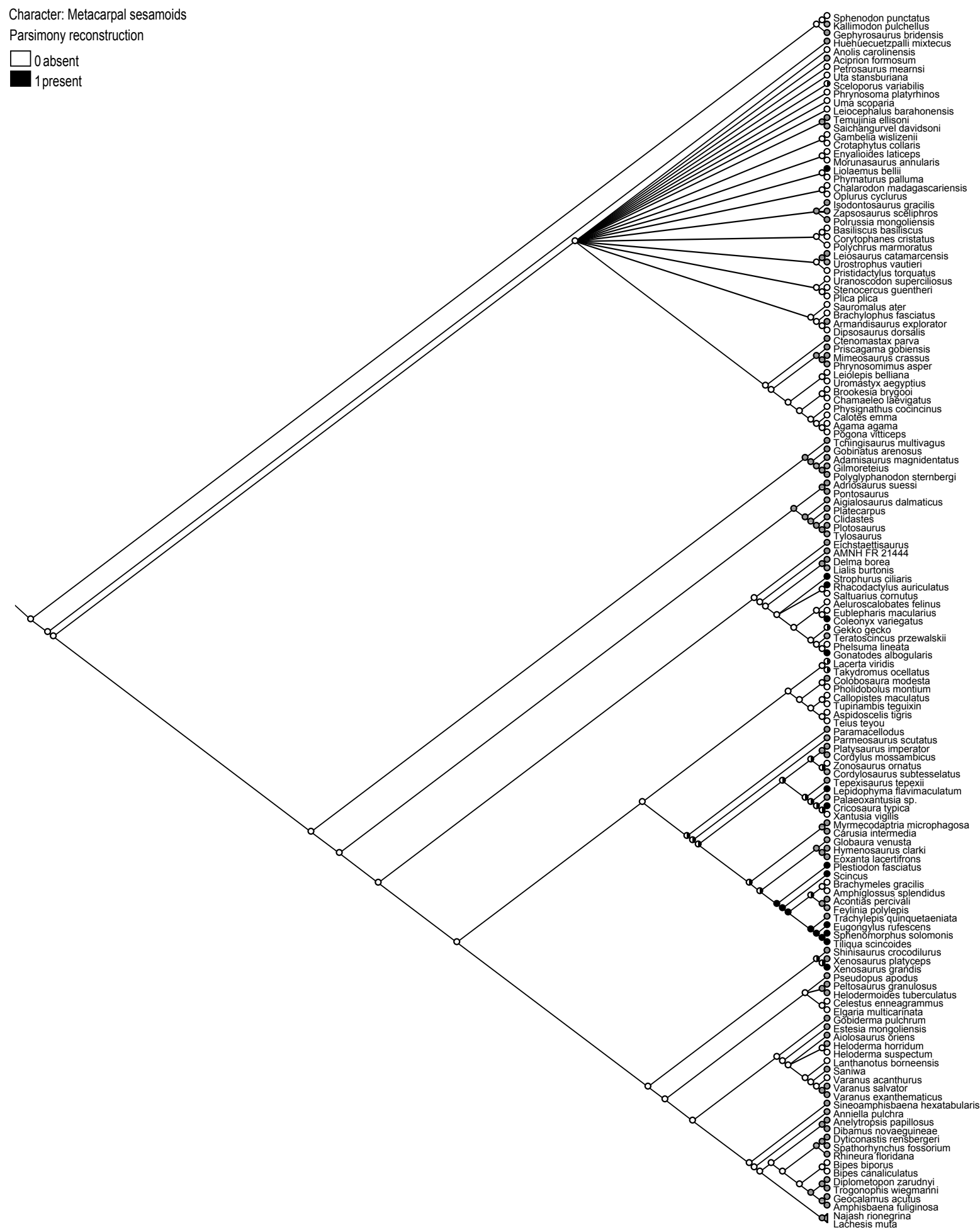
0 absent  
1 present



Character: Metacarpal sesamoids

Parsimony reconstruction

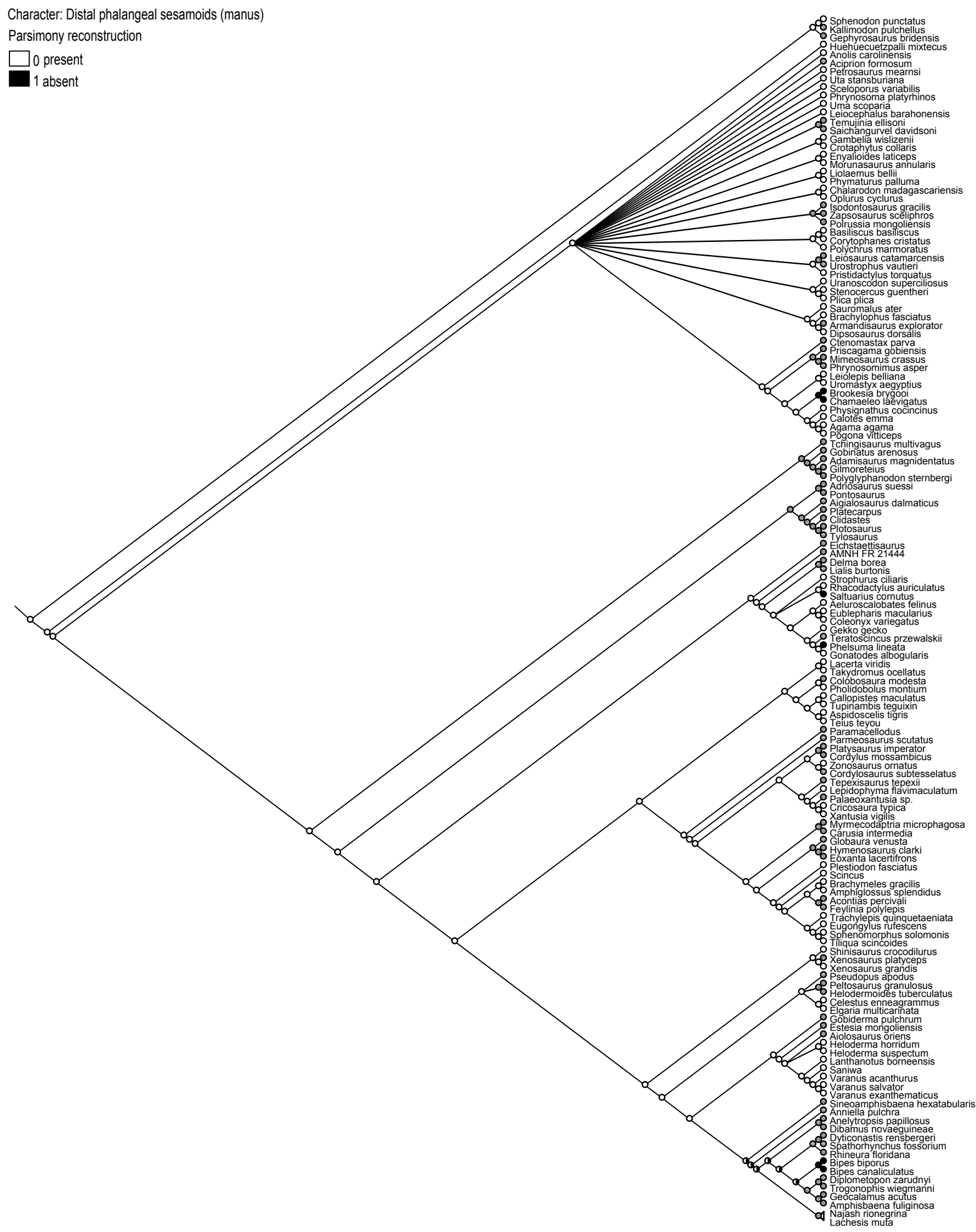
□ 0 absent  
■ 1 present



Character: Distal phalangeal sesamoids (manus)

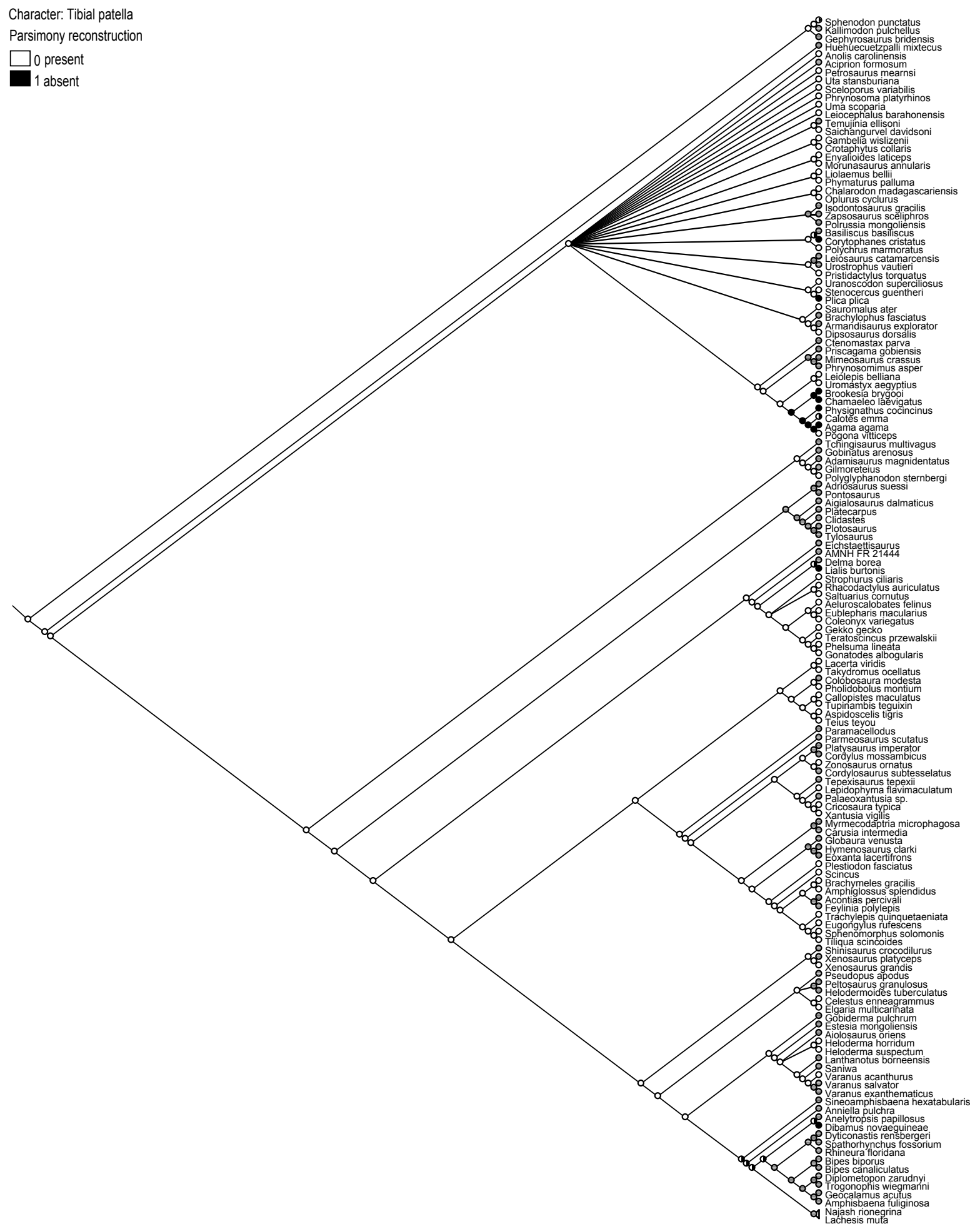
Parsimony reconstruction

□ 0 present  
■ 1 absent



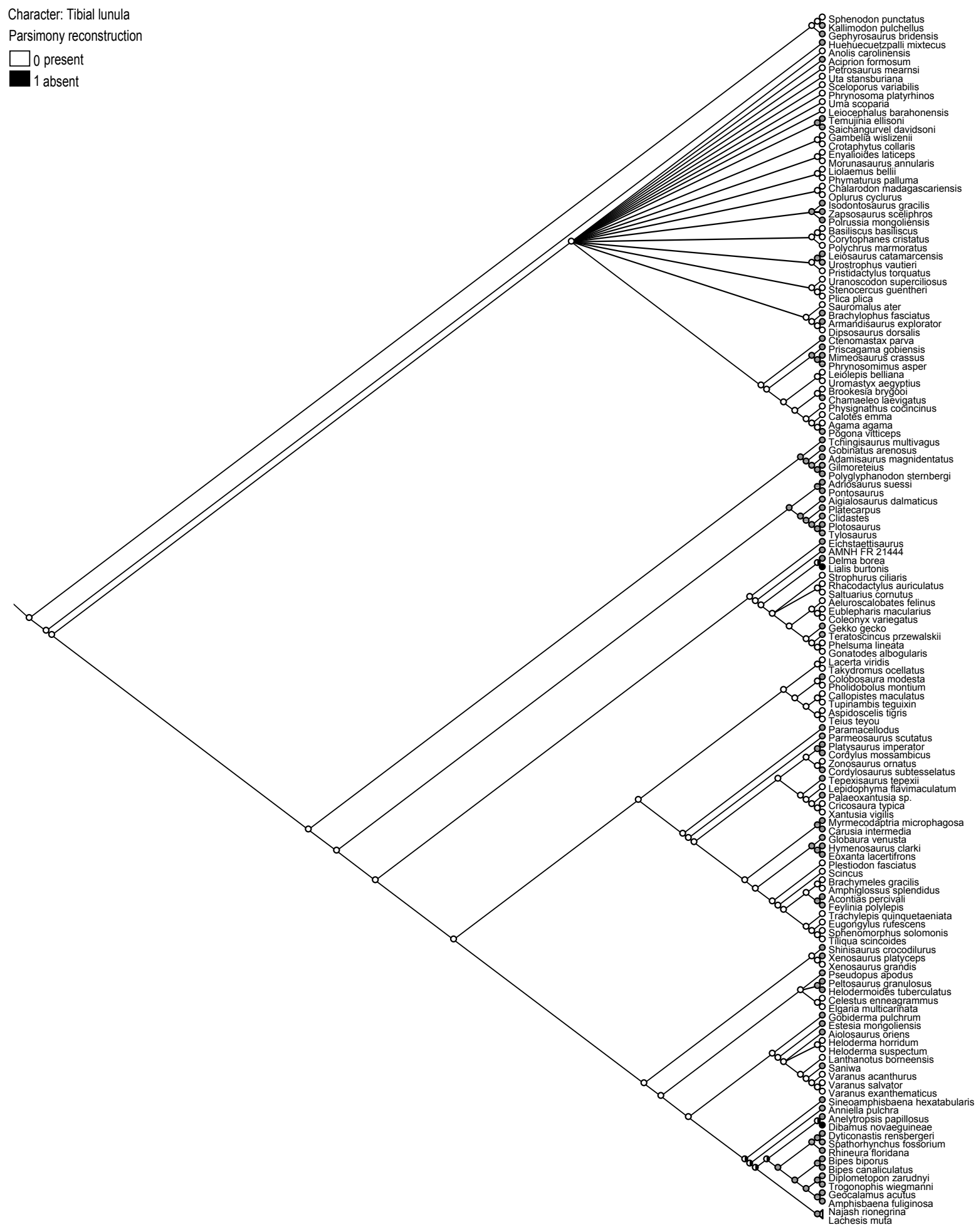
Character: Tibial patella  
Parsimony reconstruction

□ 0 present  
■ 1 absent



Character: Tibial lunula  
Parsimony reconstruction

□ 0 present  
■ 1 absent

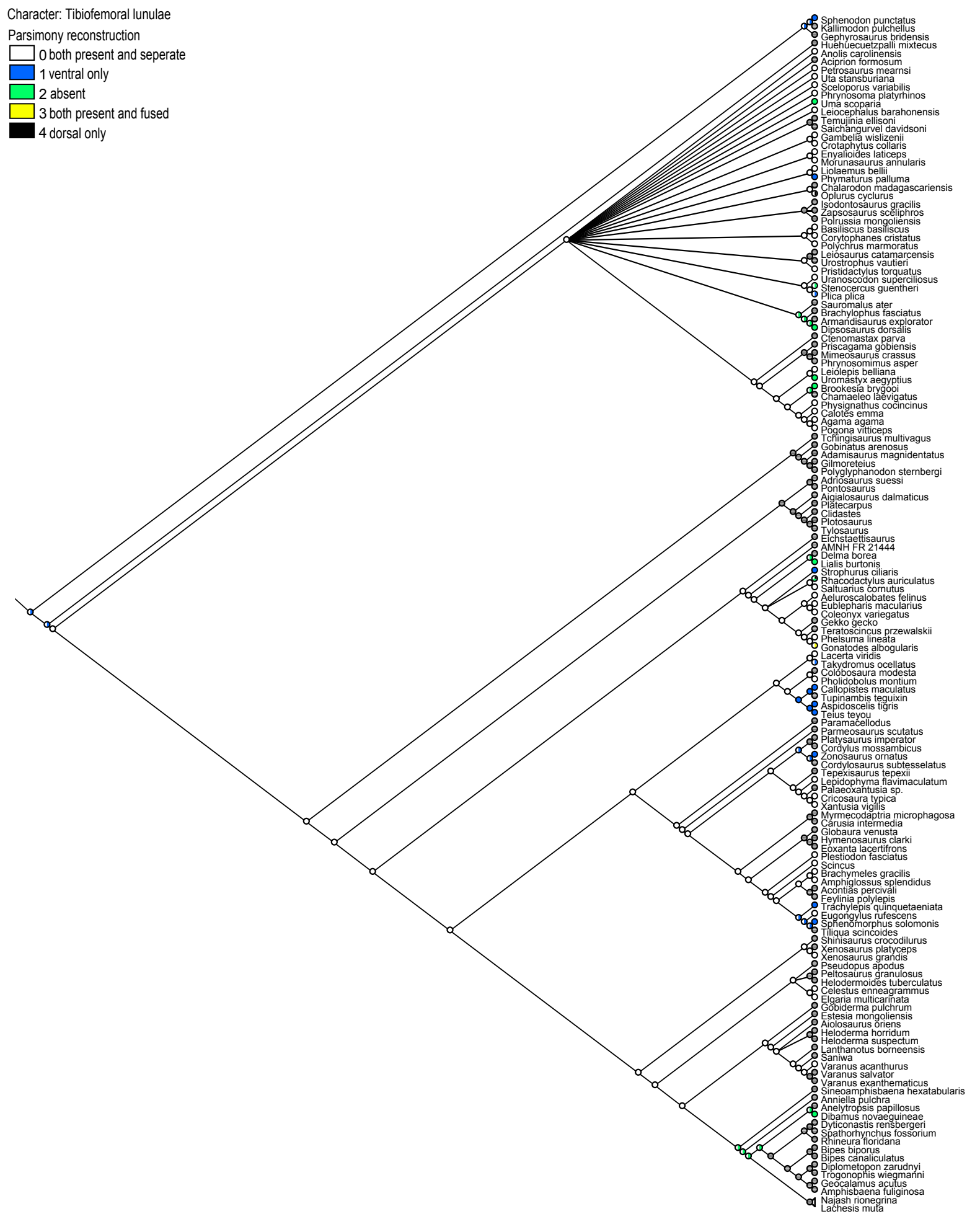






Character: Tibiofemoral lunulae

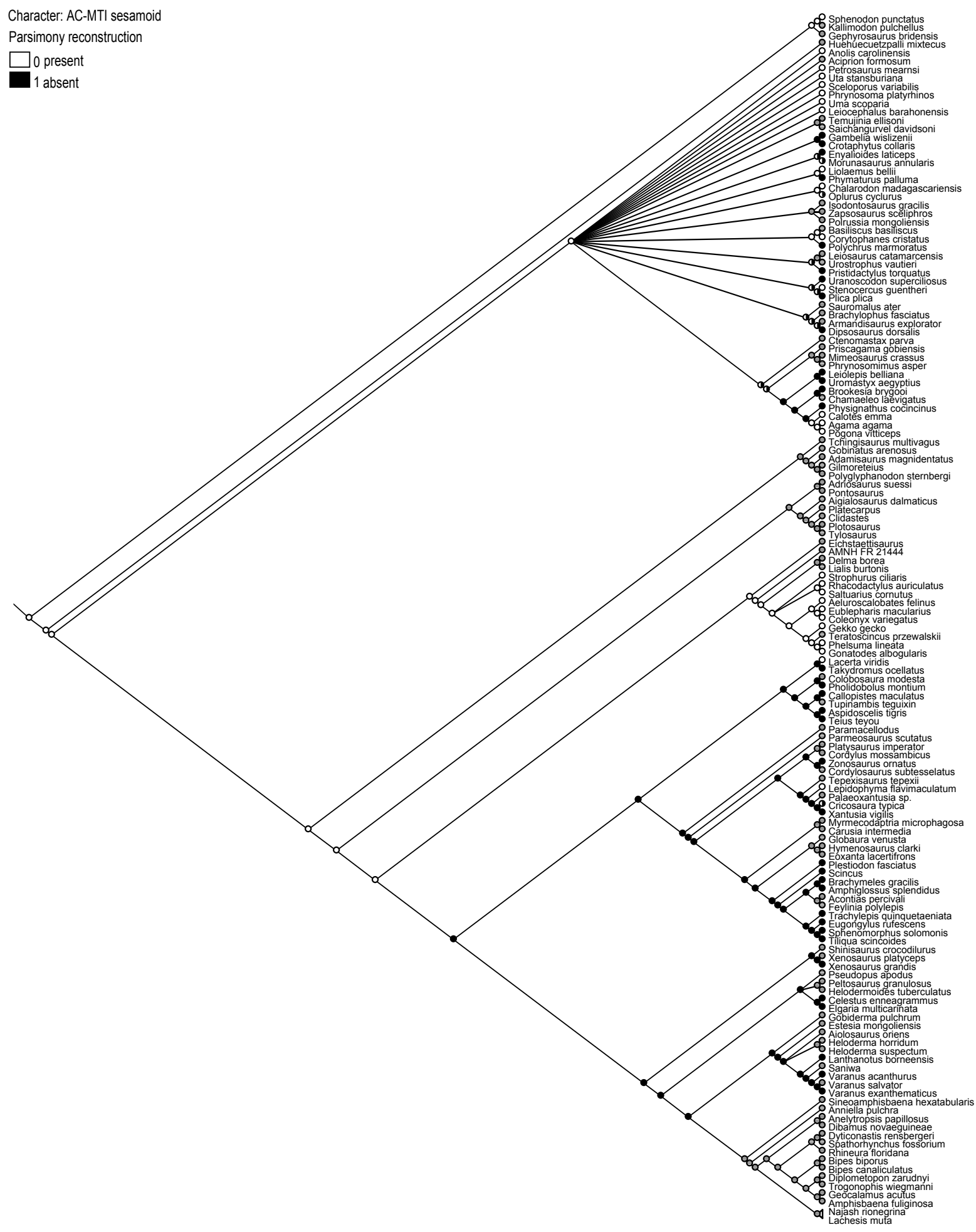
- Parsimony reconstruction
- 0 both present and separate
  - 1 ventral only
  - 2 absent
  - 3 both present and fused
  - 4 dorsal only



Character: AC-MTI sesamoid

Parsimony reconstruction

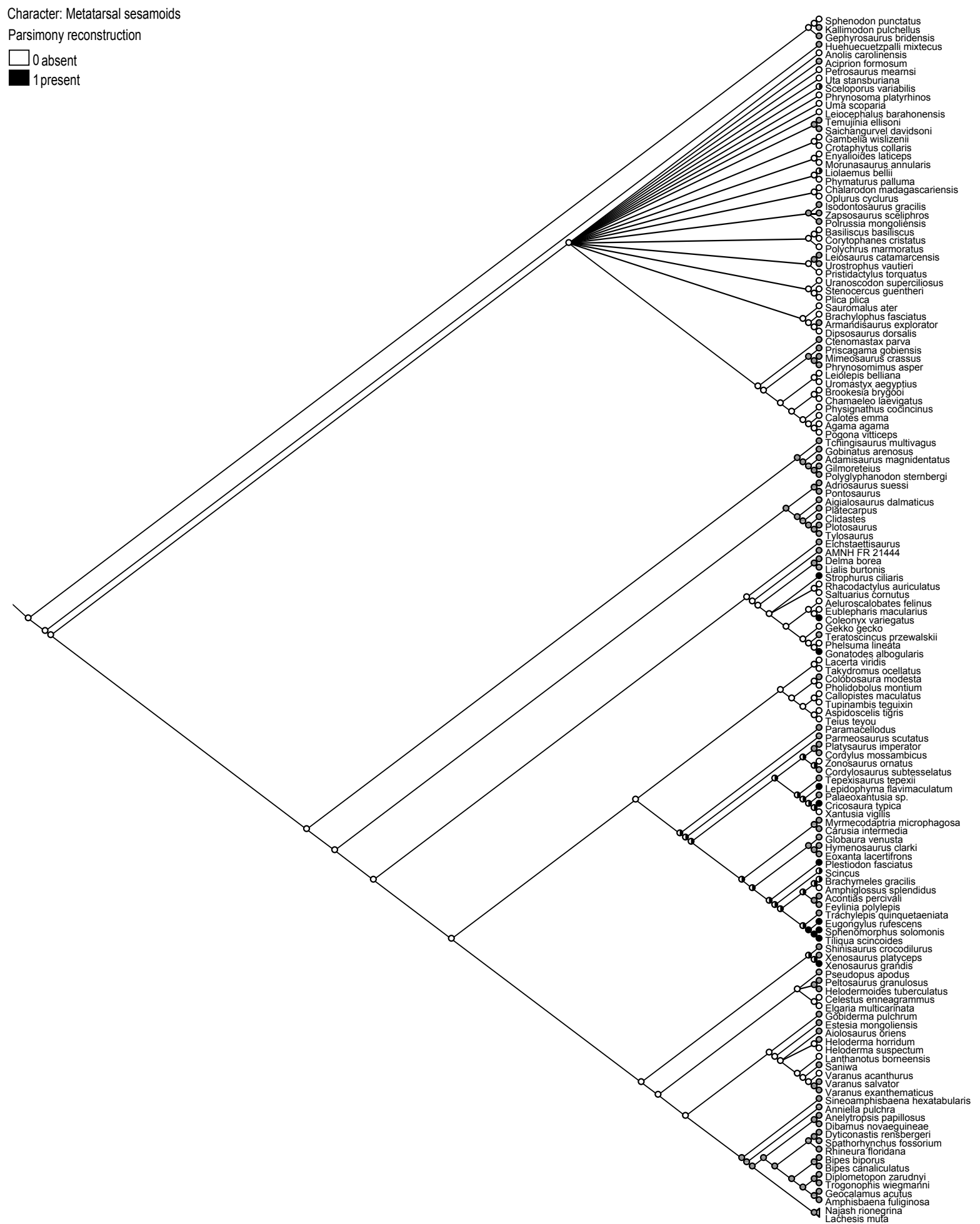
◻ 0 present  
◼ 1 absent



Character: Metatarsal sesamoids

Parsimony reconstruction

0 absent  
1 present



Character: Distal phalangeal sesamoids (pes)

Parsimony reconstruction

□ 0 present  
■ 1 absent

