

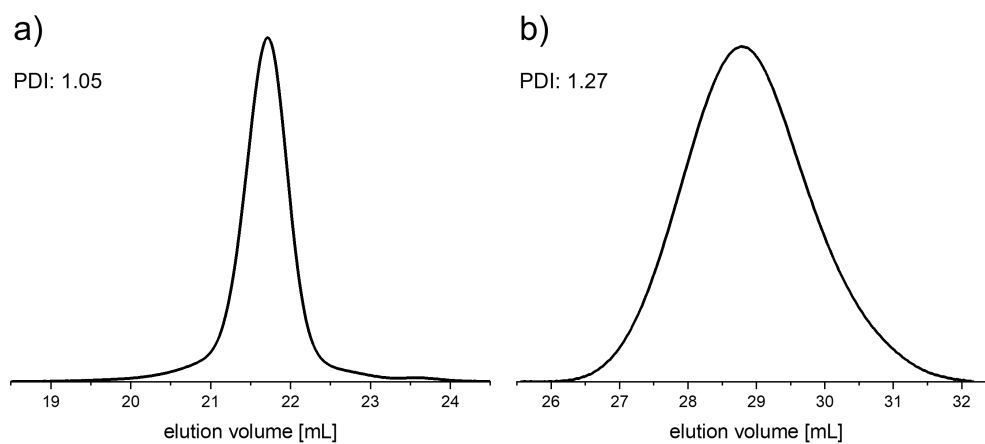
*Supporting Information*

*to*

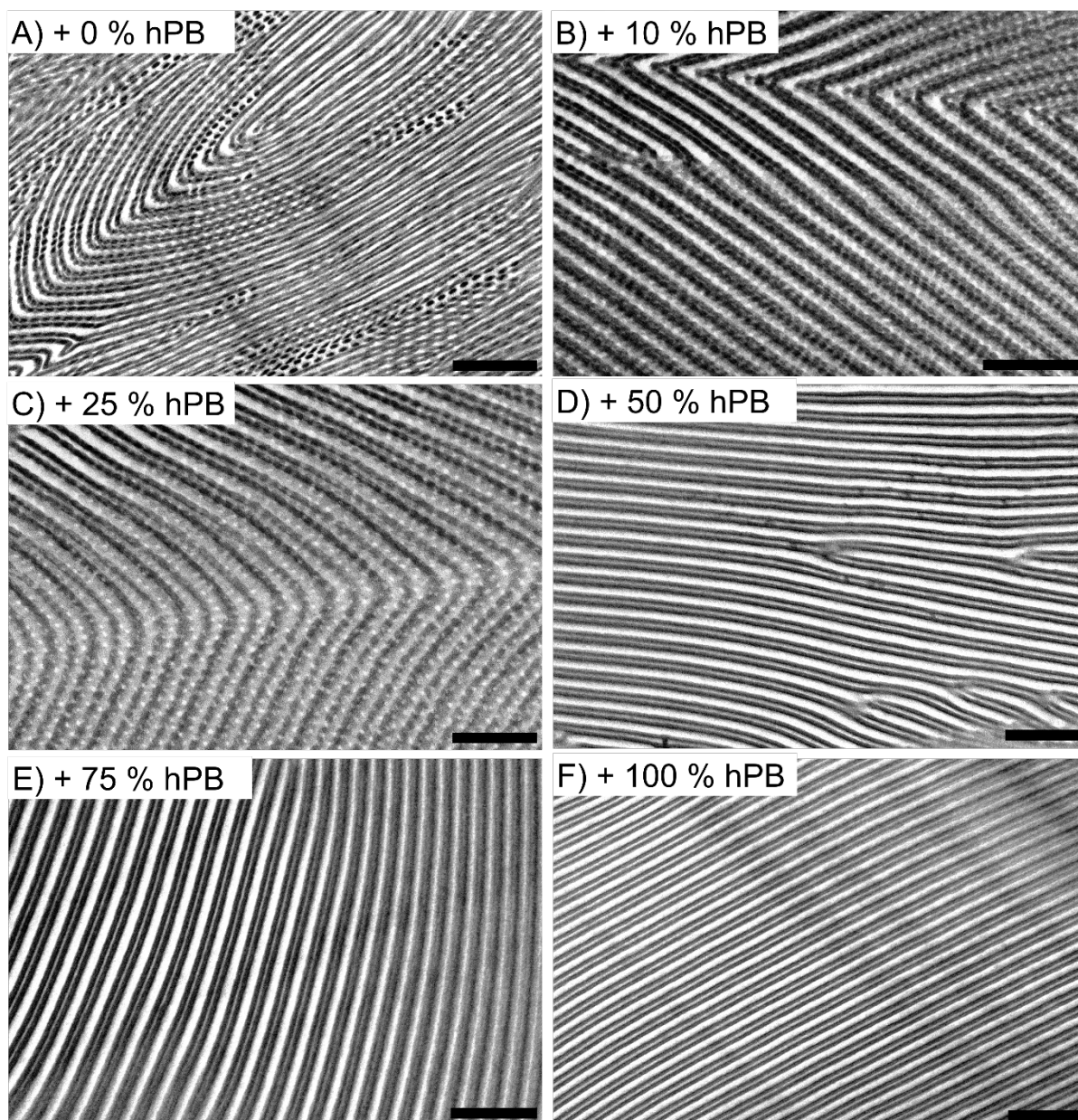
**Janus nanostructures from ABC/B triblock terpolymer blends**

Andrea Steinhaus, Deepika Srivastva, Arash Nikoubashman, André H. Gröschel

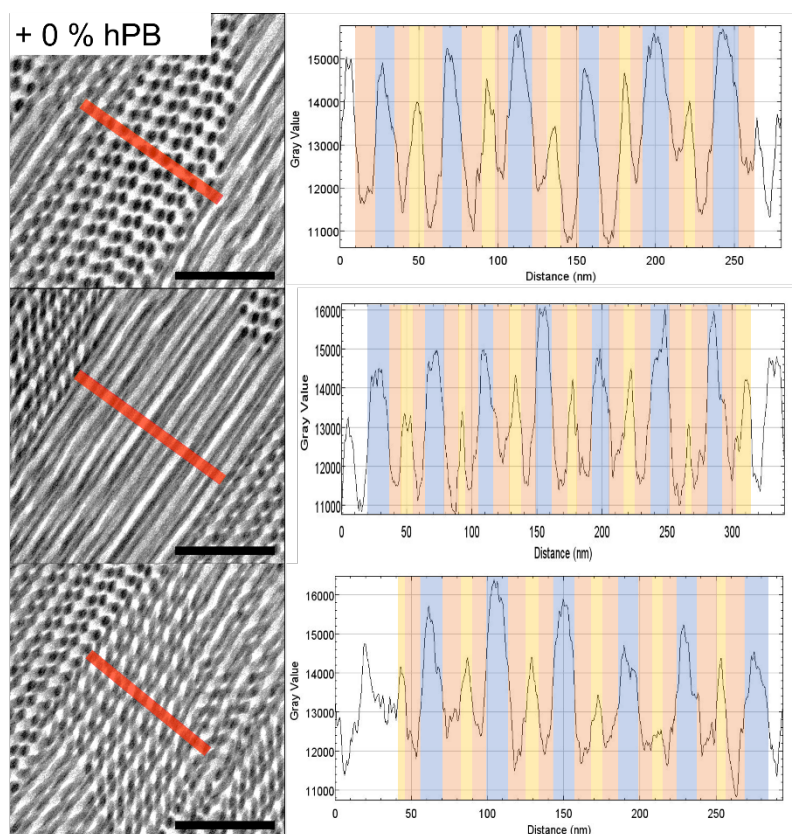
**Supporting Figures**



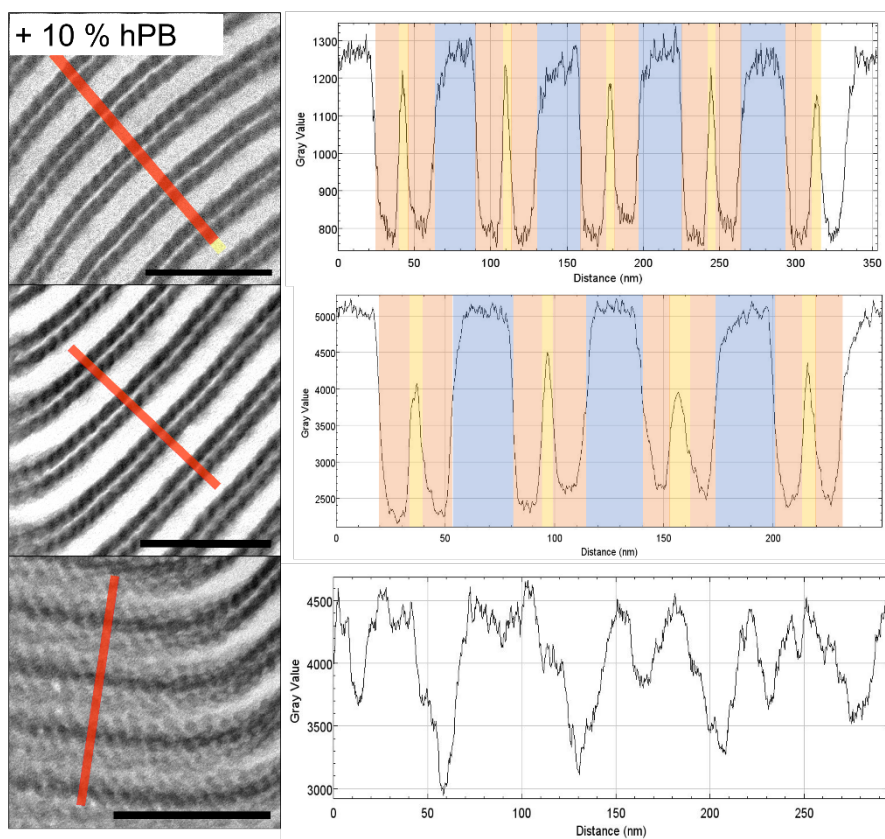
**Figure S1: SEC elugrams of the used polymers. a) SBM triblock terpolymer and b) the polybutadiene homopolymer hPB.**



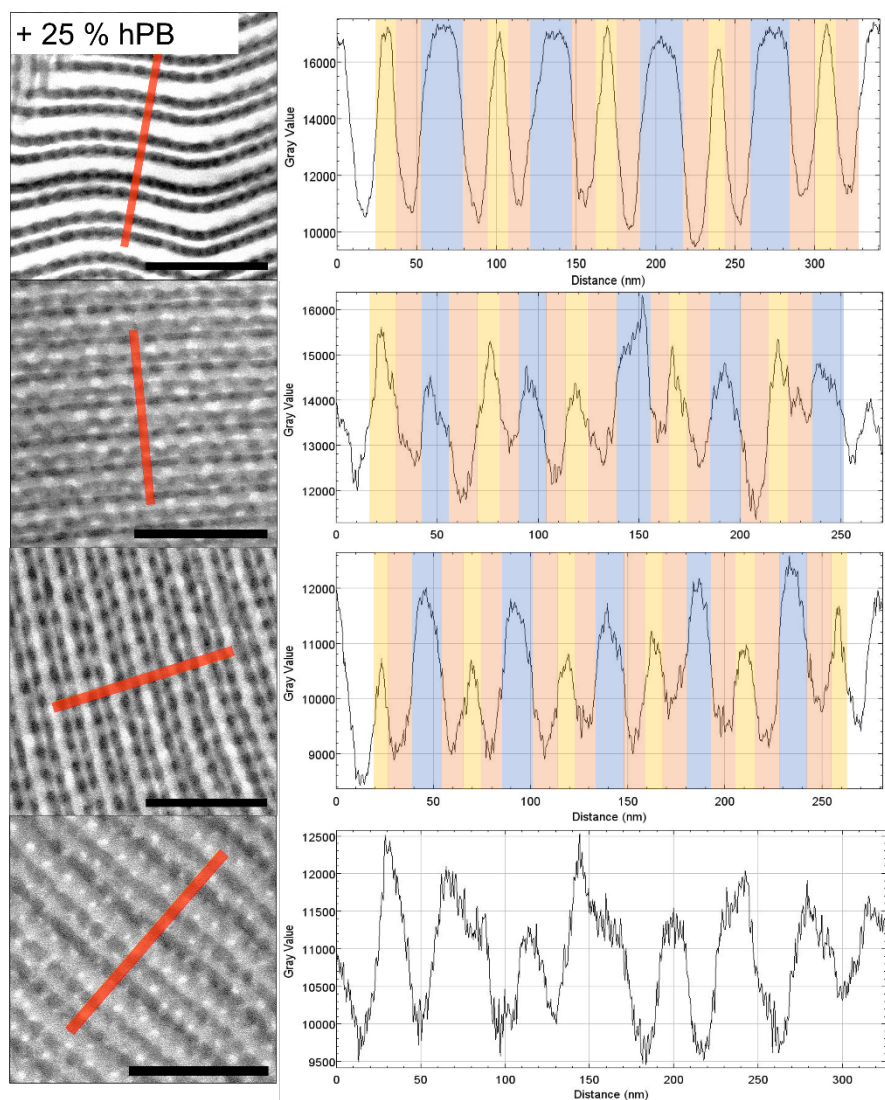
**Figure S2: TEM overview images of morphologies cross-linked with S<sub>2</sub>Cl<sub>2</sub>. Added content of hPB indicated in the figure labels. Scale bar 200 nm.**



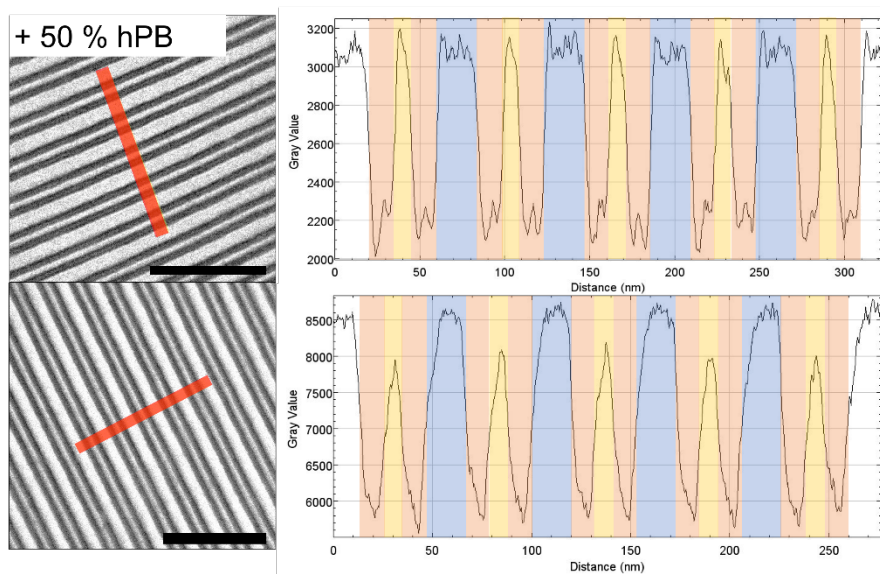
**Figure S3:** Grey scale analysis of selected locations of the bulk morphology with 0% hPB blending. Scale bar 200 nm.



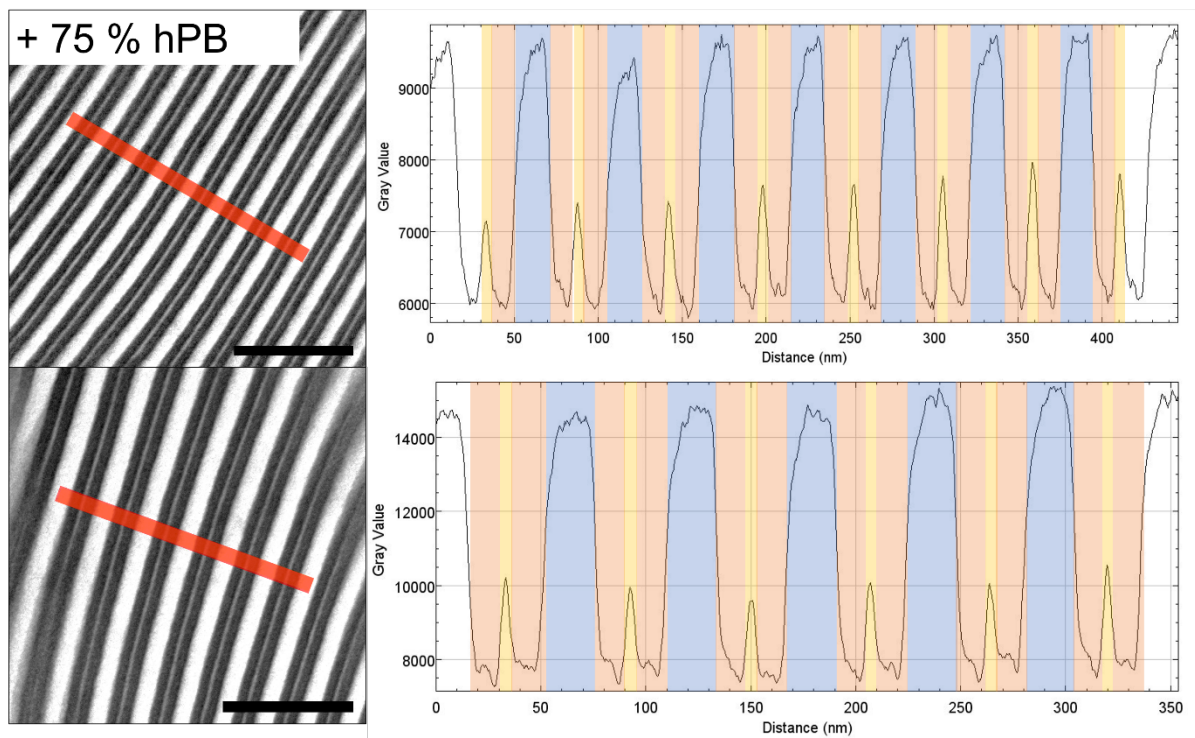
**Figure S4:** Grey scale analysis of selected locations of the bulk morphology with 10% hPB blending. Scale bar 200 nm.



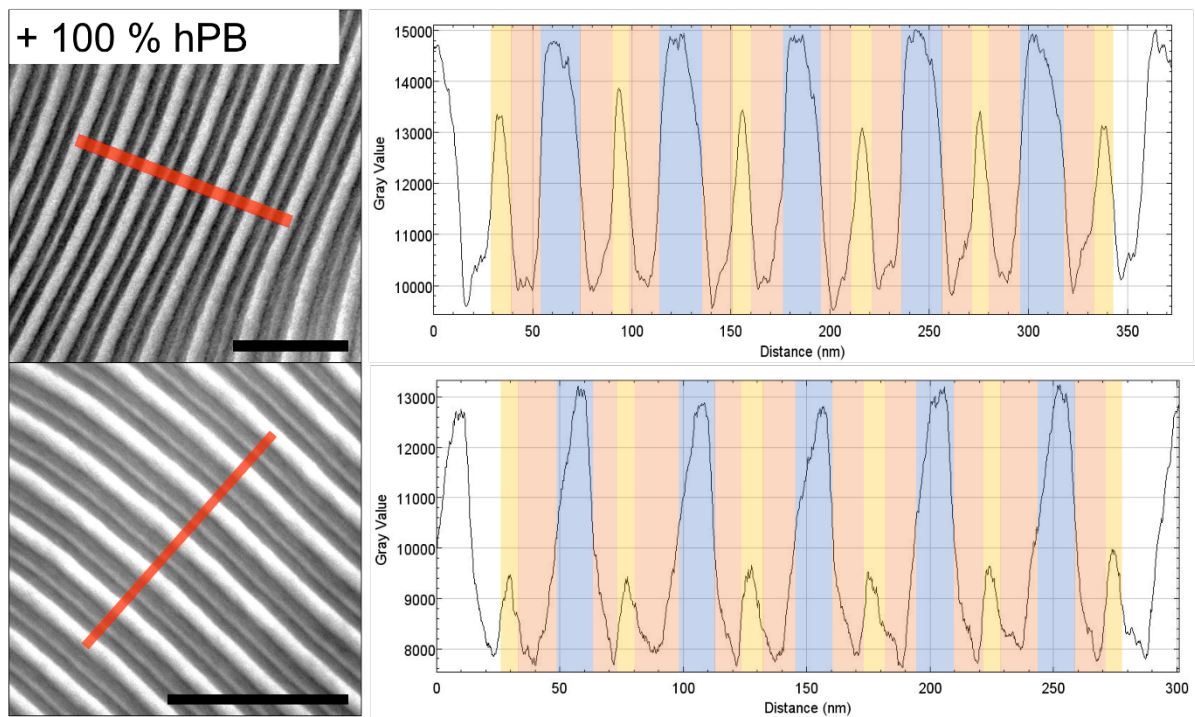
**Figure S5:** Grey scale analysis of selected locations of the bulk morphology with 25% hPB blending. Scale bar 200 nm.



**Figure S6:** Grey scale analysis of selected locations of the bulk morphology with 50% hPB blending. Scale bar 200 nm.



**Figure S7:** Grey scale analysis of selected locations of the bulk morphology with 75% hPB blending. Scale bar 200 nm.



**Figure S8:** Grey scale analysis of selected locations of the bulk morphology with 100% hPB blending. Scale bar 200 nm.