

## Supplementary Material

Article

# Antidiabetic Potential of *Mangifera indica* L. cv. Anwar Ratol Leaves: Medicinal Application of Food Wastes

Mohammad Saleem <sup>1,\*</sup>, Muiz Tanvir <sup>2</sup>, Muhammad Furqan Akhtar <sup>3,\*</sup>, Mazhar Iqbal <sup>4</sup> and Ammara Saleem <sup>2</sup>

<sup>1</sup> Punjab University College of Pharmacy, University of the Punjab, Lahore, Pakistan

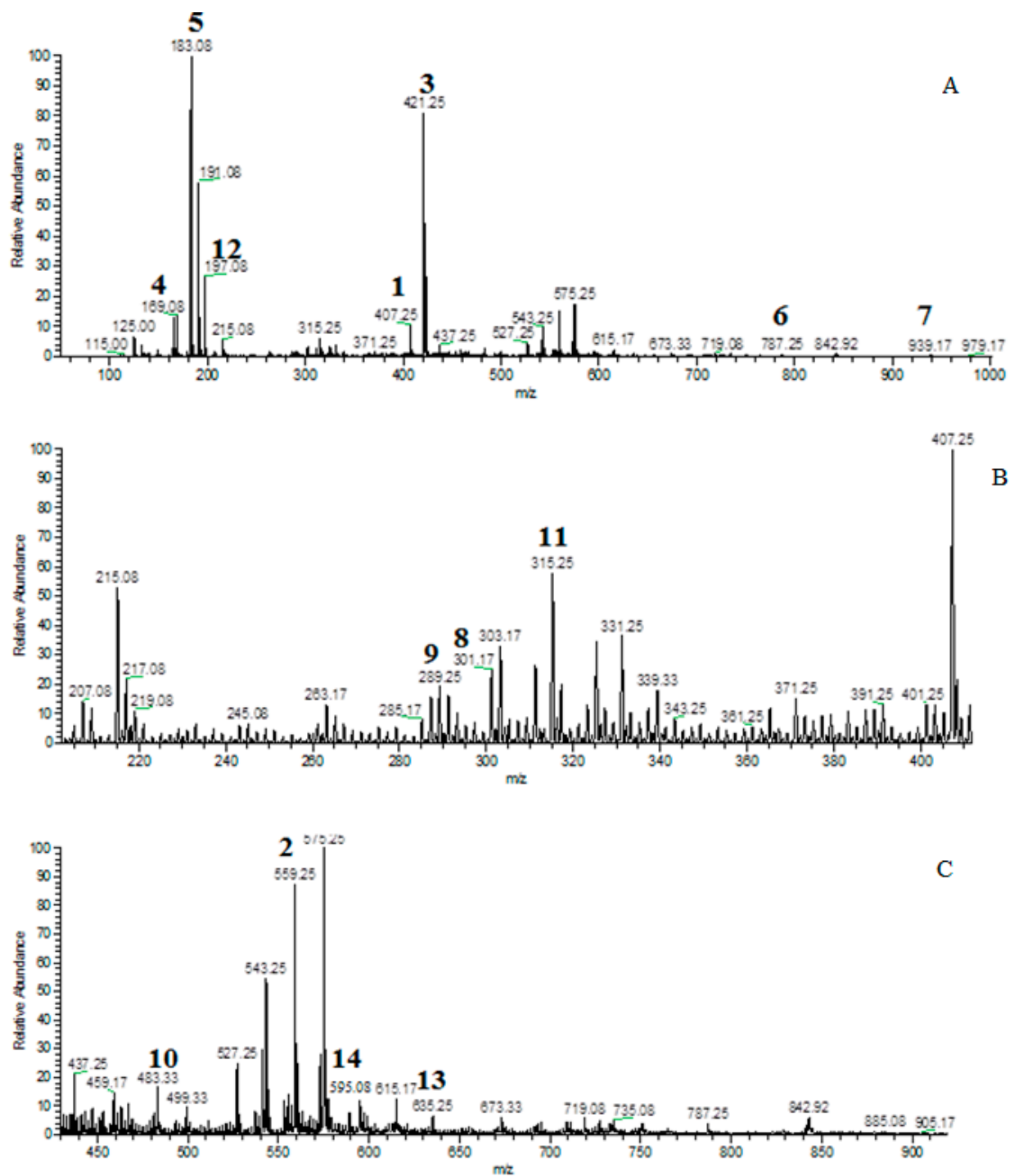
<sup>2</sup> Department of Pharmacology, Faculty of Pharmaceutical Sciences, Government College University Faisalabad, Faisalabad, Pakistan, muiztanvir@gmail.com (M.T), amarafurqan786@hotmail.com (A.S)

<sup>3</sup> Riphah Institute of Pharmaceutical Sciences, Riphah International University, Lahore Campus, Lahore, Pakistan

<sup>4</sup> Department of Health Biotechnology, NIBGE, Jhang Road, Faisalabad, Pakistan migondal@nibge.org (M.I)

\* Correspondence: saleem2978@hotmail.com (M.S.), furqan.pharmacist@gmail.com (M.F.A.)

ESI-MS Spectrum of *Mangifera indica* leaf extract



**Figure S1.** Magnification of peak between the mass ranges of 100–1000, 200–450 and 450–900 m/z.