

Supporting Information

Gene source screening as a tool for naringenin production in engineered *Saccharomyces cerevisiae*

Rita Mark¹, Xiaomei Lyu¹, Kuan Rei Ng¹, Wei Ning Chen^{1*}

¹School of Chemical and Biomedical Engineering, Nanyang Technological University,
Singapore

* Corresponding author: Wei Ning Chen

Address: School of Chemical and Biomedical Engineering, College of Engineering, Nanyang Technological University, 62 Nanyang Drive, Singapore 637459, Singapore

Email: WNCHEN@NTU.EDU.SG (WNC)

Tel: (+65)6316 2870

Supplementary results

Western Blot

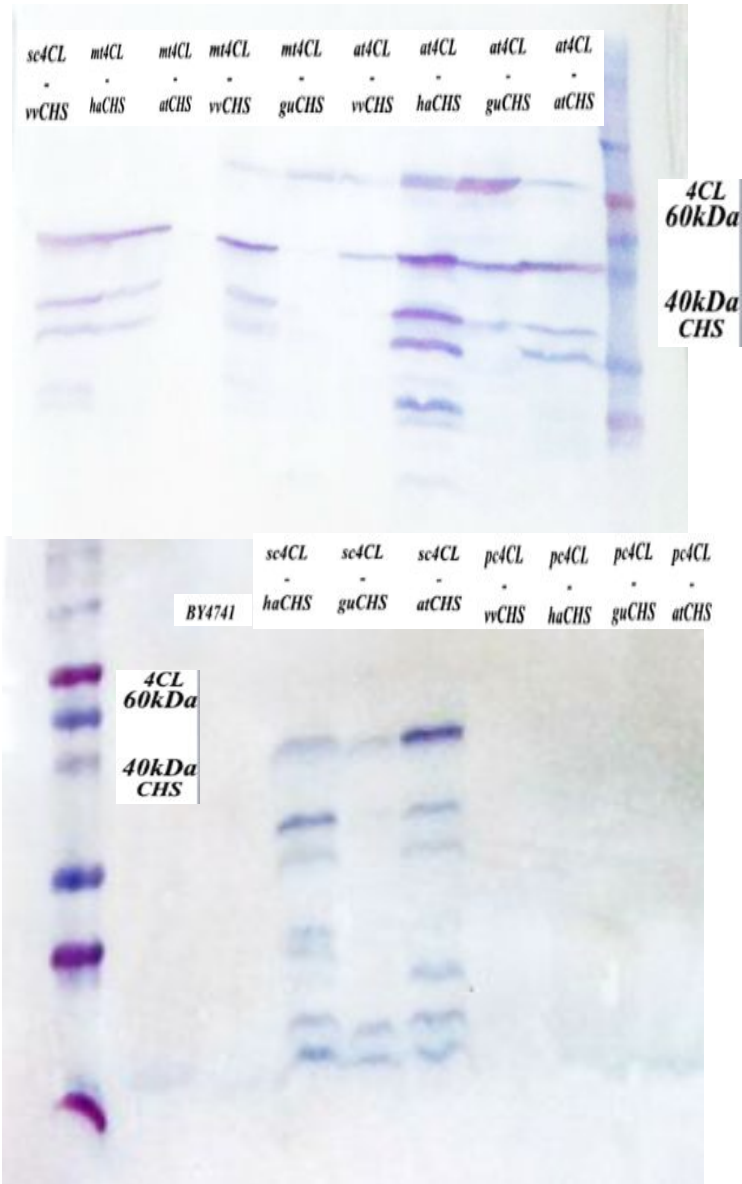


Figure S1. Western blot results of the sixteen strains expressed in *S. cerevisiae*

GC-MS Chromatography

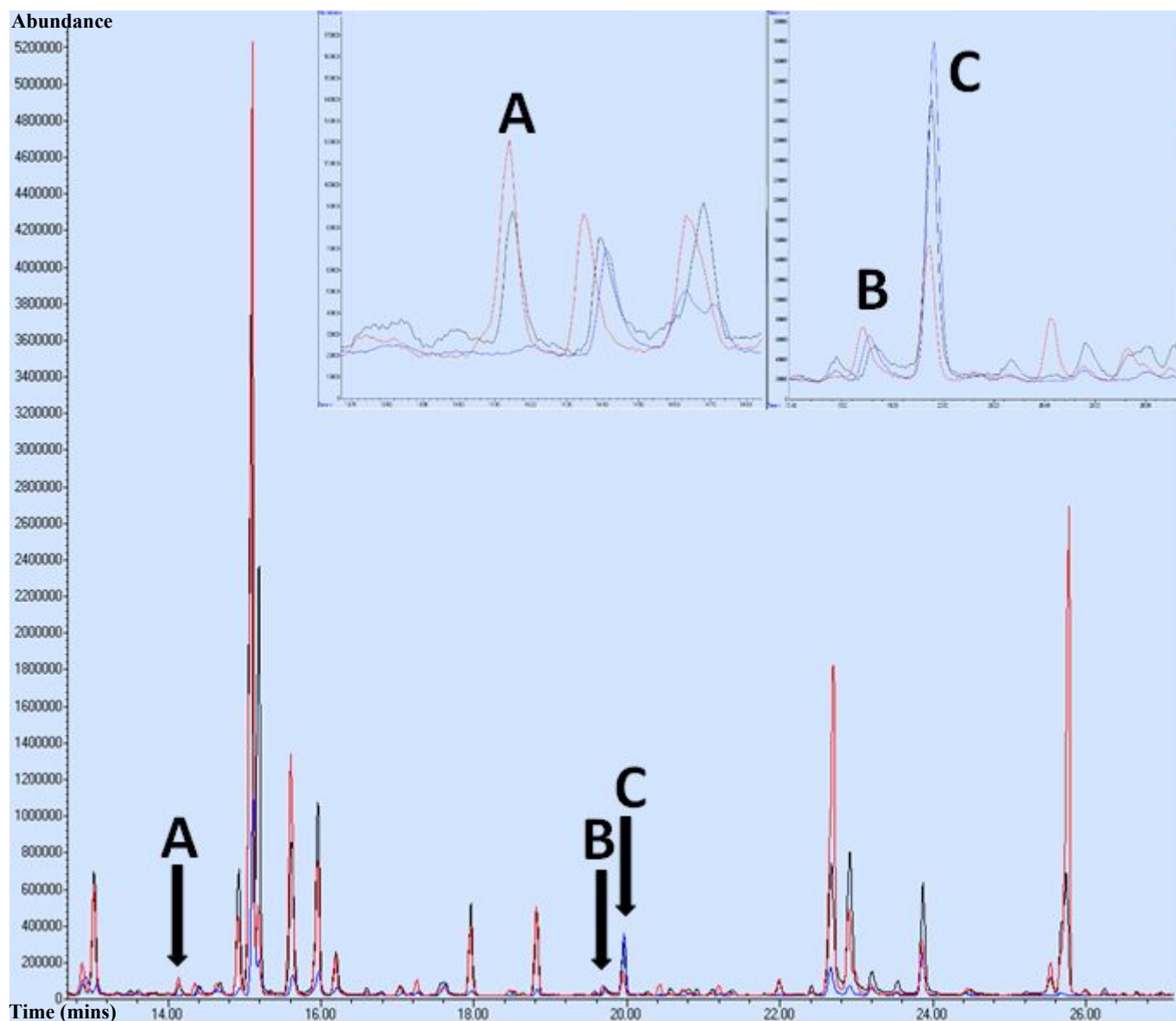


Figure S2. GC-MS chromatography overlay example for two naringenin producing strains and a control. A: Serine (retention time: 14.35 mins) B: L-Aspartate (retention time: 19.7 mins) C: Glycine (retention time: 19.95 mins) Black chromatograph: pCEV-G1-Km-at4CL-haCHS. Blue chromatograph: pCEV-G1-Km-rt4CL-vvCHS. Red chromatograph: Control.