

Supplementary Online Content

Gyamfi-Bannerman C, Zupancic JAF, Sandoval G, et al; Eunice Kennedy Shriver National Institute of Child Health and Human Development Maternal-Fetal Medicine Units Network. Cost-effectiveness of antenatal corticosteroid therapy vs no therapy in women at risk of late preterm delivery: a secondary analysis of a randomized clinical trial. *JAMA Pediatr*. Published online March 11, 2019.
doi:10.1001/jamapediatrics.2019.0032

eFigure 1. Decision Tree

eFigure 2. Incremental costs, effectiveness, and associated sampling uncertainty

eFigure 3. Difference in total cost by change in cost of betamethasone

eTable. Sensitivity Analyses Varying the Cost of Betamethasone and All Other Health Care Costs

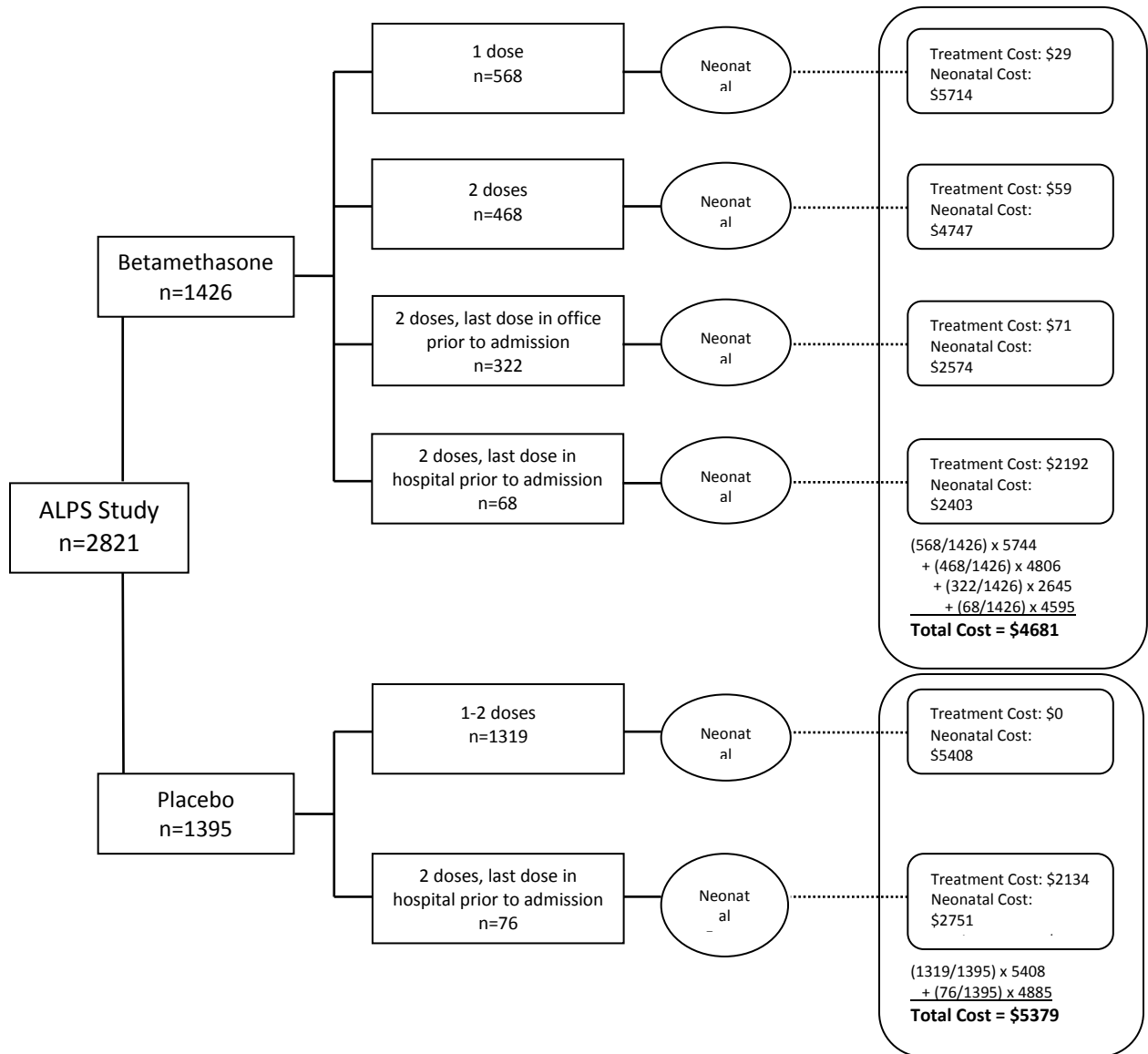
This supplementary material has been provided by the authors to give readers additional information about their work.

eTable 1. Sensitivity Analyses Varying the Cost of Betamethasone and All Other Health Care Costs

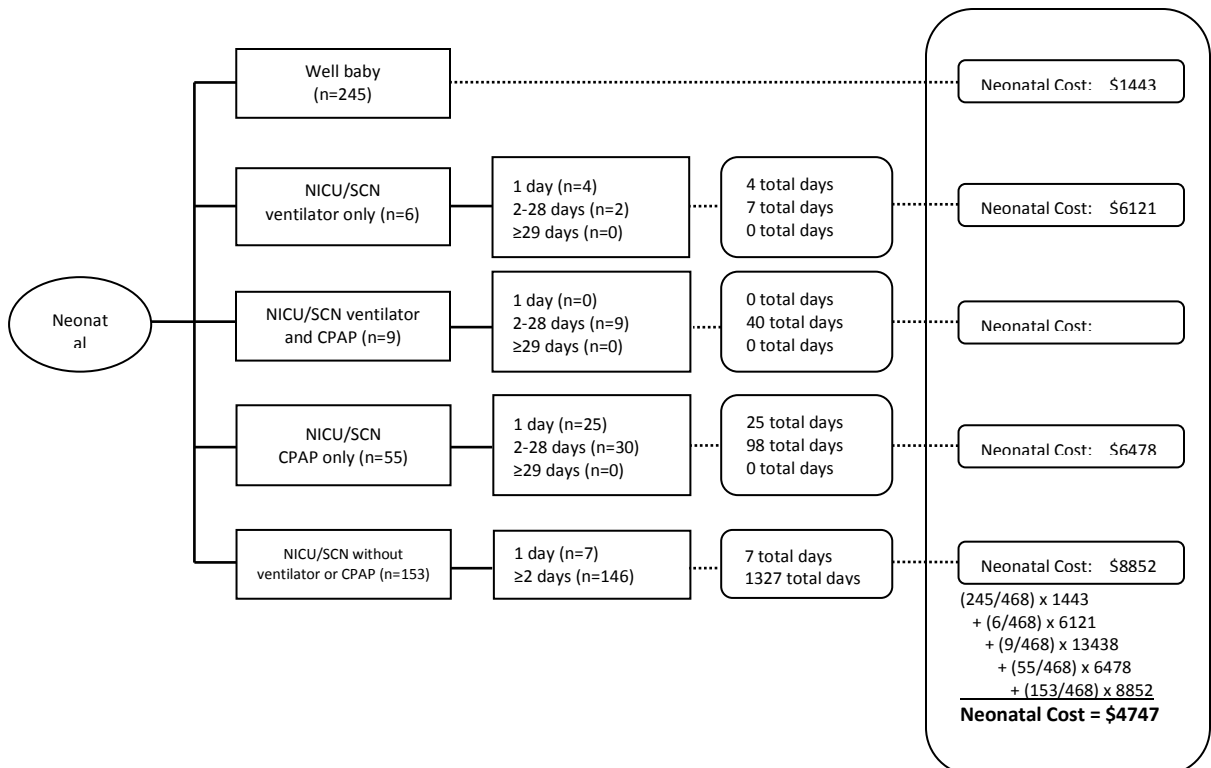
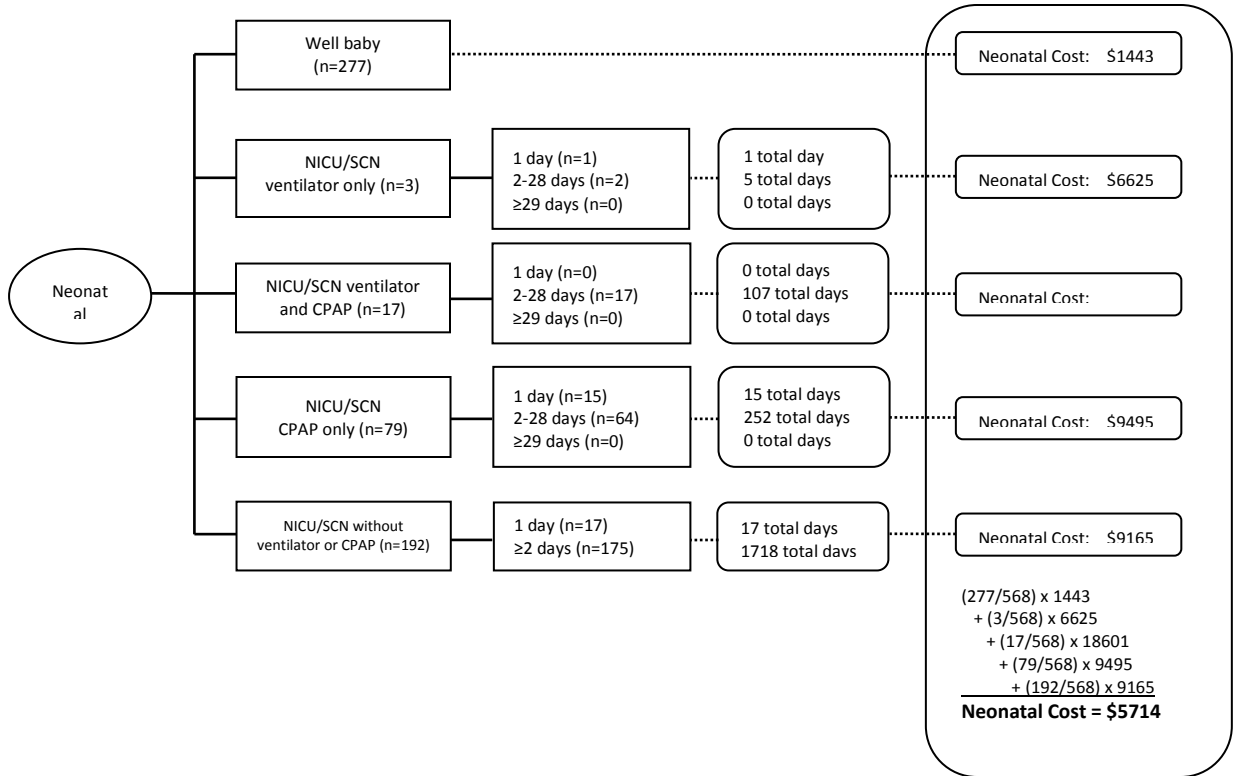
Parameter	Mean Total Cost Betamethasone (n=1,426)	Mean Total Cost Placebo (n=1,395)	ΔCost	ΔEffectiveness	ICER	% Dominated	% Dominant
Betamethasone cost, base							
All Costs, 50%	2,364	2,690	-325	0.029	-11,185	0.04	98.6
All Costs, base	4,681	5,379	-698	0.029	-23,986	0.04	98.8
All Costs, 200%	9,316	10,759	-1443	0.029	-49,588	0.02	98.8
Betamethasone cost, 125%							
All Costs, 50%	2,376	2,690	-314	0.029	-10,781	0.04	98.3
All Costs, base	4,693	5,379	-686	0.029	-23,582	0.04	98.7
All Costs, 200%	9,328	10,759	-1431	0.029	-49,184	0.02	98.8
Betamethasone cost, 150%							
All Costs, 50%	2,388	2,690	-302	0.029	-10,377	0.04	98.1
All Costs, base	4,705	5,379	-674	0.029	-23,178	0.04	98.7
All Costs, 200%	9,339	10,759	-1419	0.029	-48,780	0.02	98.8
Betamethasone cost, 175%							
All Costs, 50%	2,400	2,690	-290	0.029	-9,973	0.04	97.8
All Costs, base	4,717	5,379	-663	0.029	-22,774	0.04	98.6
All Costs, 200%	9,351	10,759	-1407	0.029	-48,376	0.04	98.8
Betamethasone cost, 200%							
All Costs, 50%	2,411	2,690	-278	0.029	-9,569	0.06	97.5
All Costs, base	4,728	5,379	-651	0.029	-22,370	0.04	98.6
All Costs, 200%	9,363	10,759	-1396	0.029	-47,972	0.04	98.8

All costs include maternal (non-treatment), hospital, physician, and well-baby costs.

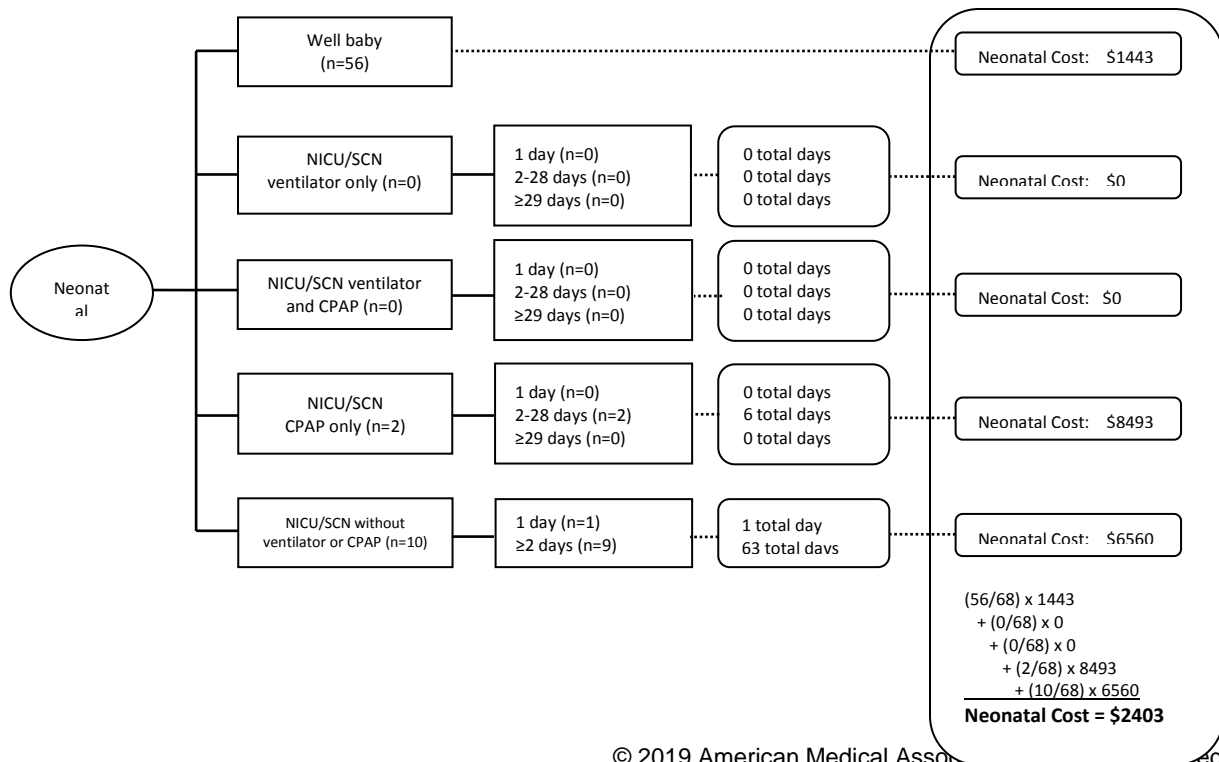
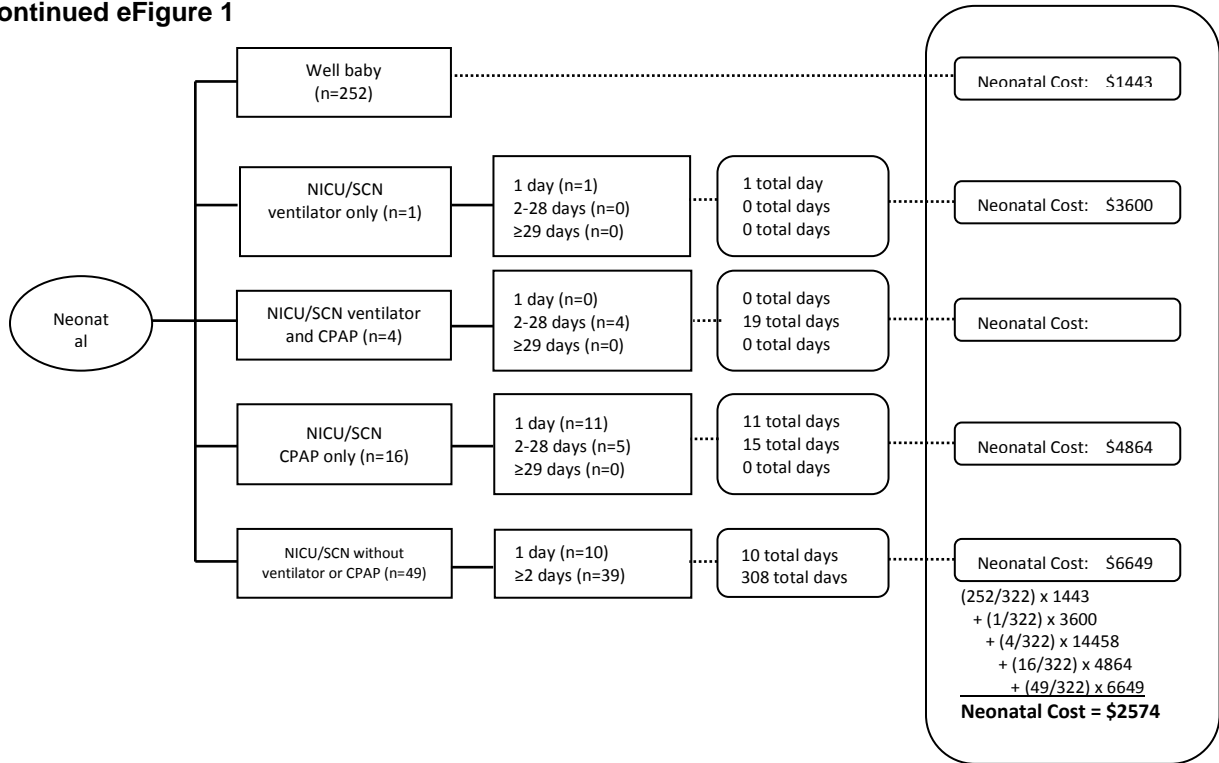
eFigure 1. Decision Tree



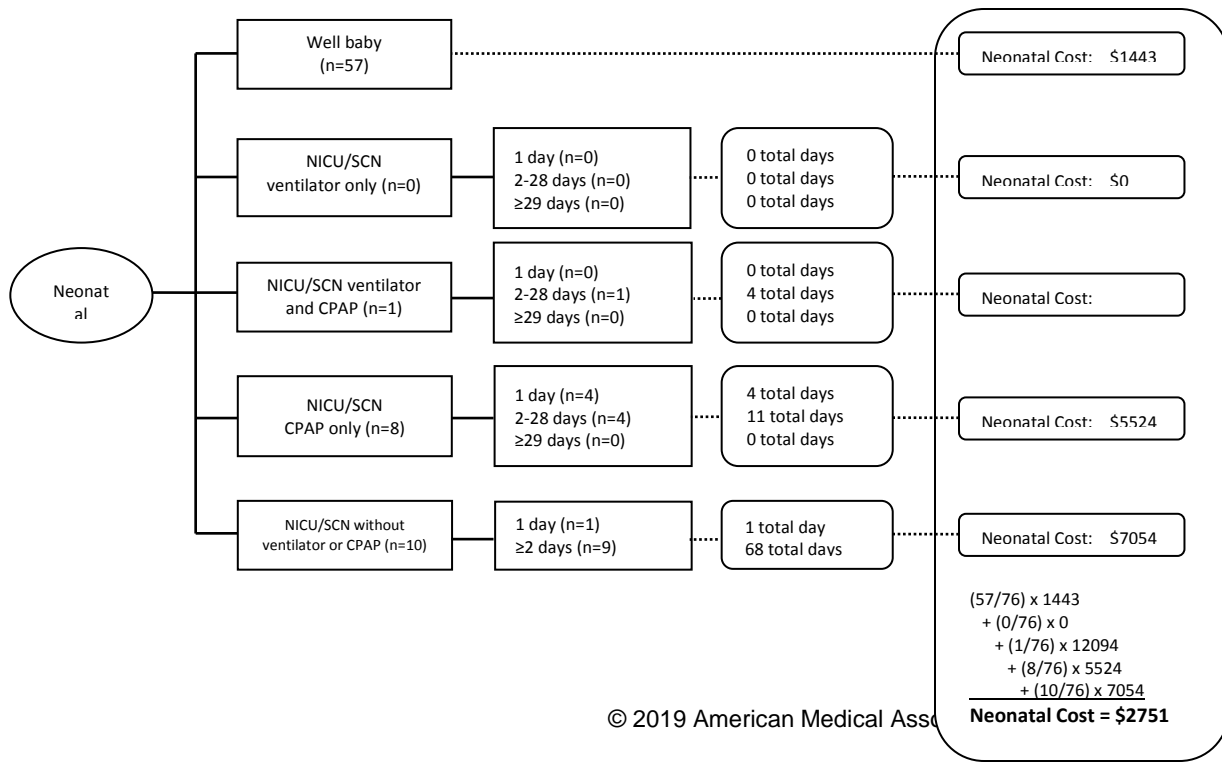
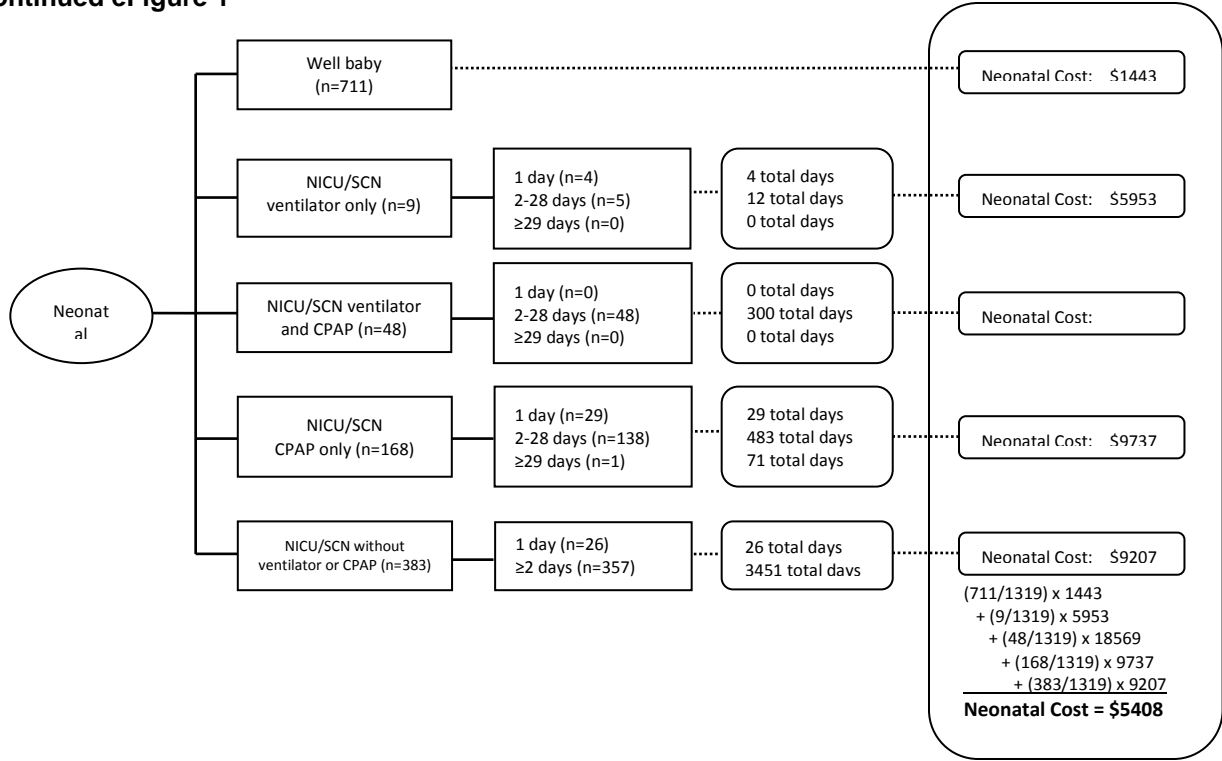
continued eFigure 1



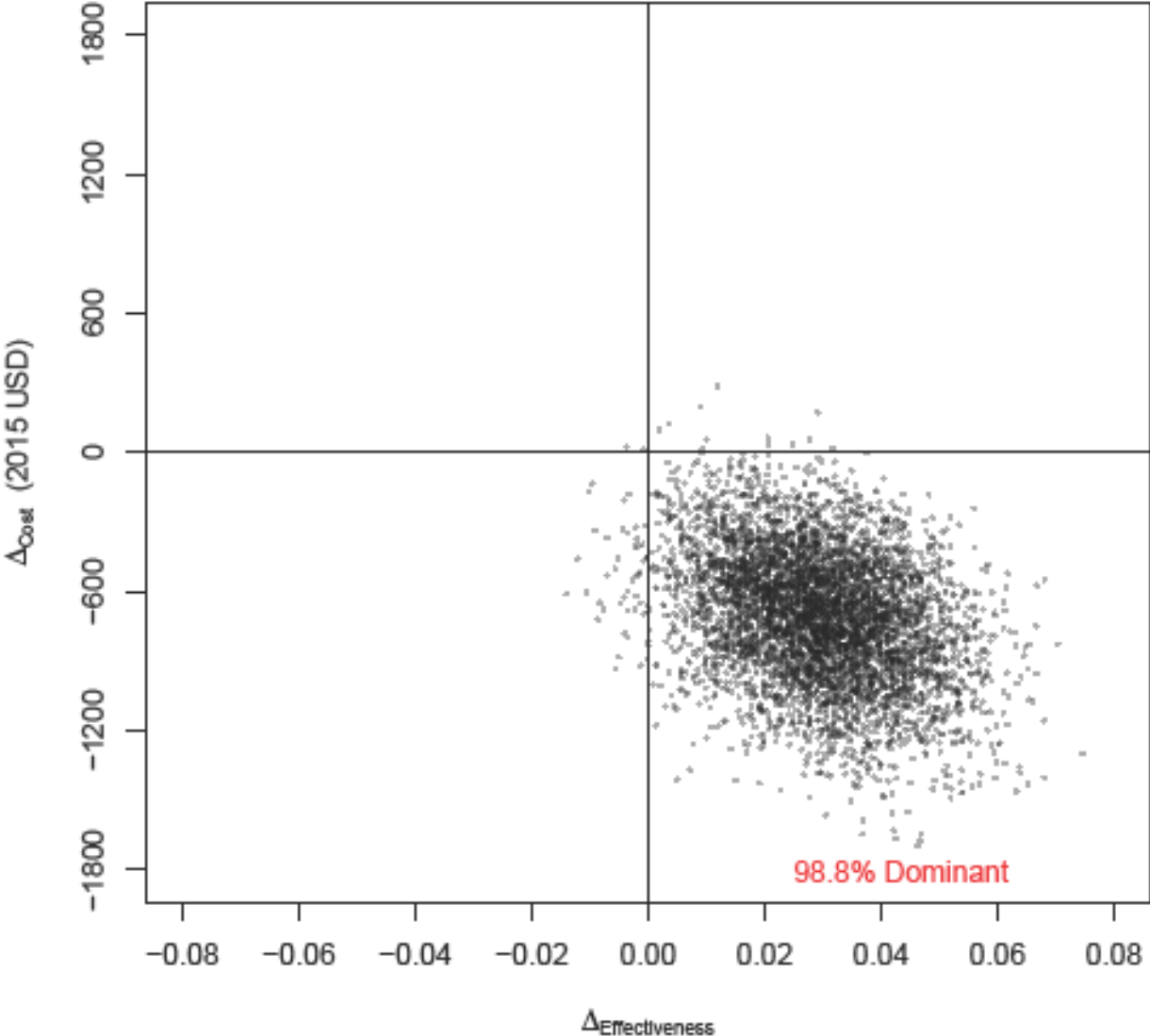
continued eFigure 1



continued eFigure 1



eFigure 2. Incremental costs, effectiveness, and associated sampling uncertainty



eFigure 3. Difference in total cost by change in cost of betamethasone

