

Trends in incidence and survival in patients with melanoma, 1974

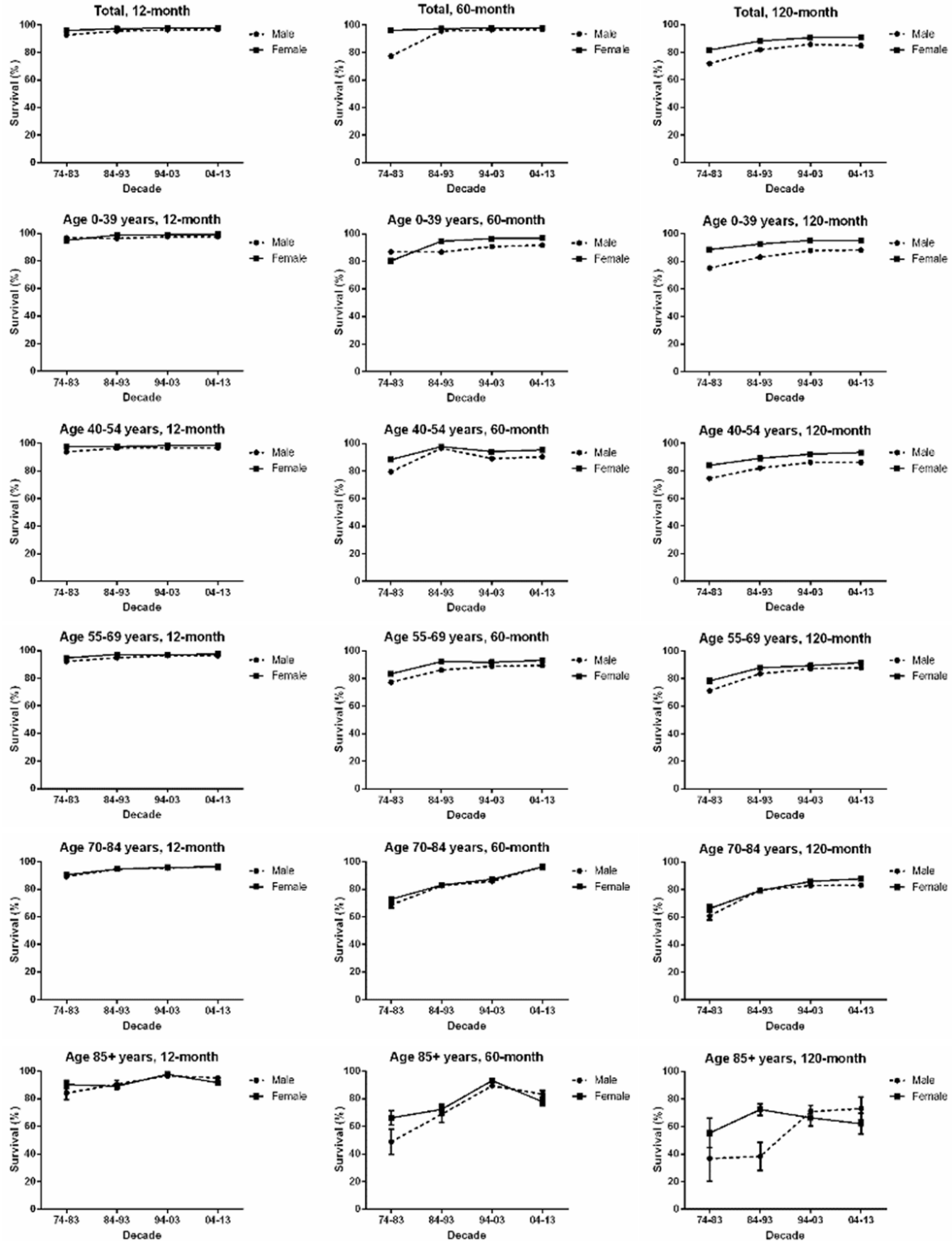


Figure S1. 12, 60 and 120-month relative survival rates of cutaneous melanoma from 1974 to 2013 at eighteen SEER sites by age group (total and ages 0-39, 40-54, 55-69, 70-84 and 85+ years).

Trends in incidence and survival in patients with melanoma, 1974

Table S1. 12-month, 60-month and 12-month relative survival rates of melanoma patients according to race, age group, and calendar period from 1974 to 2013 at eighteen SEER sites. Data are means \pm standard error of the mean, with number of patients in parentheses

Decade	Age Group	Race		
		White	Black	Other
74-83	12-Mo RS			
	All	94.50 \pm 0.20 (15994)	79.5 \pm 3.9 (124) ^{***}	88.0 \pm 3.1 (122)
	0-39	96.70 \pm 0.30 (4698)	100 \pm 0.0 (15)	94.3 \pm 4.0 (35)
	40-54	95.70 \pm 0.30 (4421)	79.4 \pm 7.2 (33) ^{***}	91.8 \pm 5.7 (24)
	55-69	93.50 \pm 0.40 (4338)	77.60 \pm 6.9 (41) ^{***}	89.90 \pm 5.0 (38)
	70-84	90.3 \pm 0.8 (2122)	61.9 \pm 10.7 (24) ^{***}	75.5 \pm 9.9 (22)
	85+	88.40 \pm 2.50 (415)	93.0 \pm 13.20 (11)	37.2 \pm 30.4 (3)
	60-Mo RS			
	All	81.7 \pm 0.40 (15994)	58.3 \pm 5.3 (124) ^{***}	63.4 \pm 4.7 (122)
	0-39	86.60 \pm 0.50 (4698)	87.6 \pm 8.9 (15)	85.5 \pm 6.2 (35)
	40-54	83.80 \pm 0.60 (4421)	61.1 \pm 9.1 (33) ^{**}	67.4 \pm 9.7 (24)
	55-69	80.2 \pm 0.7 (4338)	49.5 \pm 8.7 (41) ^{***}	58.3 \pm 8.5 (38)
	70-84	71.40 \pm 1.50 (2122)	46.2 \pm 13.3 (24)	38.5 \pm 12.0 (22)
	85+	61.90 \pm 5.30 (415)	50.0 \pm 24.6 (11)	0.00 \pm 0.00 (3)
	120-Mo RS			
	All	76.9 \pm 0.50 (15994)	47.1 \pm 6.0 (124) ^{***}	55.9 \pm 5.1 (122)
	0-39	82.40 \pm 0.60 (4698)	75.1 \pm 11.7 (15)	82.8 \pm 6.7 (35)
	40-54	79.2 \pm 0.7 (4421)	51.2 \pm 10.0 (33) ^{***}	65.1 \pm 10.3 (24)
	55-69	74.70 \pm 0.90 (4338)	36.0 \pm 9.3 (41) ^{**}	41.5 \pm 8.8 (38)
	70-84	65.1 \pm 2.0 (2122)	37.3 \pm 17.0 (24)	25.9 \pm 11.7 (22)
	85+	53.5 \pm 9.4 (415)	0.00 \pm 0.00 (11)	0.00 \pm 0.00 (3)
84-93	12-Mo RS			
	All	96.40 \pm 0.10 (27344)	86.60 \pm 3.10 (153) ^{***}	89.70 \pm 2.20 (231)
	0-39	97.80 \pm 0.20 (7064)	89.1 \pm 6.1 (27) ^{**}	92.9 \pm 3.4 (57)
	40-54	97.00 \pm 0.20 (7373)	84.80 \pm 7.40 (25) ^{***}	96.50 \pm 2.60 (54)
	55-69	95.80 \pm 0.80 (7458)	88.8 \pm 5.2 (46)	92.6 \pm 3.5 (61)
	70-84	94.90 \pm 0.50 (4601)	81.4 \pm 6.5 (45) ^{**}	79.90 \pm 6.40 (47)
	85+	89.70 \pm 1.70 (848)	84.8 \pm 13.4 (10)	65.2 \pm 15.9 (12)
	60-Mo RS			
	All	87.60 \pm 0.30 (27344)	66.50 \pm 4.90 (153)	69.5 \pm 3.4 (231)
	0-39	91.10 \pm 0.40 (7064)	78.30 \pm 8.0 (27)	86.0 \pm 4.7 (57)
	40-54	88.80 \pm 0.40 (7373)	62.3 \pm 10.2 (25)	84.0 \pm 5.20 (57)
	55-69	86.80 \pm 0.50 (7458)	73.6 \pm 8.1 (46)	75.2 \pm 6.0 (61)
	70-84	83.30 \pm 1.00 (4601)	46.5 \pm 9.8 (45)	37.5 \pm 8.7 (47)
	85+	71.1 \pm 3.4 (848)	72.4 \pm 18.7 (10)	0.00 \pm 0.00 (12)
	120-Mo RS			
	All	84.70 \pm 0.30 (27344)	62.0 \pm 5.2 (153) ^{***}	65.2 \pm 3.7 (231)
	0-39	88.20 \pm 0.40 (7064)	78.3 \pm 8.0 (27)	82.7 \pm 5.2 (57)
	40-54	85.00 \pm 0.50 (7373)	62.3 \pm 10.2 (25) ^{**}	75.7 \pm 6.2 (57)
	55-69	85.0 \pm 0.6 (7458)	65.6 \pm 10.0 (46) [*]	71.3 \pm 6.7 (61)
	70-84	79.8 \pm 1.4 (4601)	35.6 \pm 9.9 (45) ^{**}	31.3 \pm 8.8 (47)
	85+	67.0 \pm 8.1 (848)	42.5 \pm 40.3 (10)	0.00 \pm 0.00 (12)
94-03	12-Mo RS			
	All	96.90 \pm 0.10 (71630)	87.30 \pm 1.70 (452) ^{***}	92.10 \pm 1.10 (750) [*]
	0-39	98.40 \pm 0.10 (13115)	91.20 \pm 3.0 (89) ^{***}	97.00 \pm 1.40 (163) [*]

Trends in incidence and survival in patients with melanoma, 1974

	40-54	97.50±0.10 (21675)	88.70±3.40 (93)***	93.8±1.7 (207)
	55-69	96.70±0.20 (19379)	88.00±3.10 (131)***	91.10±2.20 (188)
	70-84	95.60±0.20 (14712)	86.9±3.7 (107)***	86.20±3.10 (154)
	85+	93.40±0.90 (2749)	64.50±10.10 (32)***	90.05±7.00 (38)*
	60-Mo RS			
	All	90.00±0.20 (71630)	70.00±2.60 (452)***	75.90±1.80 (750)
	0-39	94.10±0.20 (13115)	77.0±4.5 (89)***	89.0±2.5 (163)***
	40-54	91.20±0.20 (21675)	73.7±5.0 (93)***	82.40±2.80 (207)
	55-69	90.00±0.30 (19379)	70.1±4.7 (131)***	68.0±3.7 (188)
	70-84	86.50±0.50 (14712)	67.10±6.60 (107)***	63.2±4.7 (154)
	85+	75.60±2.20 (2749)	36.40±13.20 (32)	62.40±13.30 (38)
	120-Mo RS			
	All	87.80±0.20 (71630)	65.8±0.3 (452)***	67.70±2.10 (750)
	0-39	92.00±0.30 (13115)	73.4±4.9 (89)***	88.00±2.70 (163)**
	40-54	88.60±0.30 (21675)	67.3±5.5 (93)***	76.7±3.2 (207)
	55-69	88.0±0.4 (19379)	67.6±5.2 (131)***	56.6±4.1 (188)
	70-84	84.3±0.8 (14712)	57.6±8.3 (107)**	49.5±5.8 (154)
	85+	69.80±4.60 (2749)	33.50±18.30 (32)	15.00±14.00 (38)
04-13	12-Mo RS			
	All	97.00±0.10 (129972)	87.90±1.4 (734)***	90.00±0.90 (1259)
	0-39	98.50±0.10 (17395)	96.9±1.8 (100)	94.10±1.60 (230)
	40-54	97.50±0.10 (34409)	89.20±2.50 (166)***	93.80±1.40 (339)
	55-69	96.80±0.10 (43089)	89.80±2.20 (234)***	89.20±1.80 (361)
	70-84	96.40±0.20 (28375)	83.60±3.20 (187)***	86.20±2.40 (284)
	85+	93.60±0.60 (6704)	70.10±8.60 (47)**	74.30±6.50 (65)
	60-Mo RS			
	All	90.90±0.10 (129972)	64.1±2.3 (734)***	71.00±1.70 (1259)*
	0-39	94.90±0.20 (17395)	84.7±4.1 (100)***	82.6±6.9 (230)
	40-54	96.20±0.20 (34409)	64.9±4.3 (166)****	79.9±2.6 (339)**
	55-69	90.70±0.20 (43089)	59.60±4.10 (234)***	66.3±3.1 (361)
	70-84	87.90±0.40 (28375)	56.20±5.60 (187)***	59.00±4.50 (284)
	85+	80.10±1.80 (6704)	48.2±9.9 (47)	49.7±11.3 (65)
	120-Mo RS			
	All	87.60±0.24 (129972)	53.00±3.80 (734)***	61.00±2.65 (1259)
	0-39	93.20±0.35 (17395)	74.00±7.10 (100)***	79.80±3.45 (230)
	40-54	89.15±0.34 (34409)	57.00±6.00 (166)***	71.00±4.25 (339)
	55-69	88.40±0.46 (43089)	49.80±6.80 (234)***	57.00±4.50 (361)
	70-84	85.70±1.00 (28375)	47.20±12.10 (187)**	46.30±7.50 (284)
	85+	69.80±7.30 (6704)	0.00±0.00 (47)	38.00±6.50 (65)***

Abbreviations: Mo, month; RS, relative survival; SEM, standard error of the mean. * $P < 0.01$, ** $P < 0.001$, and *** $P < 0.0001$ for comparisons with the White group.

Trends in incidence and survival in patients with melanoma, 1974

Table S2. 12-month, 60-month and 120-month relative survival rates of melanoma patients according to SES, age group, and calendar period from 1974 to 2013 at eighteen SEER sites. Data are means \pm standard error of the mean, with number of patients in parenthesis

Decade	Age Group	SES		
		Low Poverty	Medium Poverty	High Poverty
74-83	12-Mo RS			
	All	94.80 \pm 0.30 (9899)	94.00 \pm 0.30 (6248)	90.50 \pm 1.90 (291)*
	0-39	97.20 \pm 0.20 (2829)	96.30 \pm 0.40 (1961)*	91.3 \pm 3.4 (69)*
	40-54	95.90 \pm 0.40 (2857)	95.00 \pm 0.60 (1589)	93.6 \pm 2.8 (78)
	55-69	93.50 \pm 0.50 (2711)	93.30 \pm 0.70 (1649)	92.1 \pm 3.1 (87)
	70-84	90.40 \pm 1.00 (1263)	89.50 \pm 1.30 (869)	81.80 \pm 6.70 (44)
	85+	88.10 \pm 3.30 (239)	88.8 \pm 3.80 (180)	80.90 \pm 14.90 (13)
	60-Mo RS			
	All	82.40 \pm 0.50 (9899)	80.8 \pm 0.6 (6248)*	71.6 \pm 3.1 (291)**
	0-39	87.50 \pm 0.60 (2829)	96.40 \pm 0.80 (1961)***	75.4 \pm 5.3 (69)***
	40-54	84.60 \pm 0.70 (2857)	82.70 \pm 1.00 (1589)	76.8 \pm 5.0 (78)
	55-69	80.10 \pm 0.90 (2711)	79.80 \pm 1.20 (1649)	72.0 \pm 5.6 (87)
	70-84	73.00 \pm 1.90 (1263)	68.4 \pm 2.3 (869)	46.9 \pm 9.8 (44)*
	85+	60.60 \pm 6.50 (239)	56.60 \pm 7.80 (180)	74.0 \pm 22.2 (13)
	120-Mo RS			
	All	77.40 \pm 0.60 (9899)	76.4 \pm 0.7	65.2 \pm 3.6***
	0-39	82.80 \pm 0.70 (2829)	82.90 \pm 0.90	74.1 \pm 5.4
	40-54	79.6 \pm 0.90 (2857)	78.7 \pm 1.2	70.9 \pm 5.6
	55-69	75.1 \pm 1.20 (2711)	73.7 \pm 1.5	62.4 \pm 6.6
	70-84	65.8 \pm 2.60 (1263)	63.6 \pm 2.9	37.4 \pm 12.0*
	85+	52.1 \pm 12.4 (239)	46.1 \pm 13.9	44.2 \pm 28.7
84-93	12-Mo RS			
	All	96.60 \pm 0.20 (16611)	96.00 \pm 0.20 (11281)	92.50 \pm 1.40 (460)
	0-39	97.90 \pm 0.20 (4277)	97.70 \pm 0.30 (3032)	98.2 \pm 1.3 (108)
	40-54	97.10 \pm 0.30 (4616)	97.00 \pm 0.30 (2928)	94.6 \pm 2.3 (105)
	55-69	96.40 \pm 0.30 (4520)	95.20 \pm 0.40 (3036)	90.4 \pm 2.9 (120)
	70-84	95.10 \pm 0.60 (2703)	94.30 \pm 0.70 (1925)	90.40 \pm 3.60 (106)
	85+	92.30 \pm 2.20 (495)	87.20 \pm 2.70 (360)	71.30 \pm 12.20 (21)
	60-Mo RS			
	All	88.30 \pm 0.30 (16611)	87.00 \pm 0.40 (11281)	79.6 \pm 2.4 (460)
	0-39	91.4 \pm 0.4 (4277)	91.30 \pm 0.50 (3032)	89.4 \pm 3.0 (108)
	40-54	89.60 \pm 0.50 (4616)	88.10 \pm 0.70 (2928)	85.5 \pm 3.7 (105)
	55-69	88.00 \pm 0.60 (4520)	86.0 \pm 0.8 (3036)	68.8 \pm 4.8 (120)
	70-84	82.80 \pm 1.30 (2703)	82.90 \pm 1.5 (1925)	79.2 \pm 5.6 (106)
	85+	76.50 \pm 4.60 (495)	65.40 \pm 5.0 (360)	49.7 \pm 17.2 (21)
	120-Mo RS			
	All	85.60 \pm 0.40 (16611)	84.4 \pm 0.5	73.0 \pm 2.9
	0-39	88.80 \pm 0.50 (4277)	87.90 \pm 0.60	89.4 \pm 3.0
	40-54	86.00 \pm 0.60 (4616)	84.4 \pm 0.8	75.7 \pm 4.7
	55-69	86.30 \pm 0.8	84.5 \pm 1.0	62.3 \pm 5.7
	70-84	79.0 \pm 1.7	79.8 \pm 2.2	63.0 \pm 9.1
	85+	72.20 \pm 11.30	60.6 \pm 11.6	38.8 \pm 20.8
94-03	12-Mo RS			
	All	97.50 \pm 0.10 (33990)	96.50 \pm 0.10 (37949)	95.50 \pm 0.40 (3369)
	0-39	98.60 \pm 0.20 (6445)	98.40 \pm 0.20 (7097)	97.30 \pm 0.70 (546)

Trends in incidence and survival in patients with melanoma, 1974

	40-54	98.00±0.10 (10531)	97.10±0.2 (11382)	97.30±0.60 (946)
	55-69	97.40±0.20 (9152)	96.20±0.20 (10084)	95.70±0.70 (958)
	70-84	96.60±0.30 (6632)	94.90±0.40 (7872)	93.20±1.20 (764)
	85+	92.20±1.40 (1230)	94.30±1.20 (1514)	87.5±4.0 (155)
	60-Mo RS			
	All	91.70±0.20 (33990)	89.20±0.20 (37949)	84.20±0.80 (3369)
	0-39	94.90±0.30 (6445)	93.90±0.30 (7097)	90.40±1.30 (546)
	40-54	92.70±0.30 (10531)	90.40±0.30 (11382)	87.6±1.2 (946)
	55-69	92.00±0.40 (9152)	88.60±0.40 (10084)	85.30±1.40 (958)
	70-84	88.5±0.7 (6632)	85.50±0.70 (7872)	76.10±2.40 (764)
	85+	77.90±2.8 (1230)	74.10±2.90 (1514)	63.4±7.8 (155)
	120-Mo RS			
	All	90.2±0.3	86.70±0.30	79.00±1.00
	0-39	93.00±0.40	92.00±0.40	87.0±1.5
	40-54	90.60±0.40	87.80±0.40	83.7±1.4
	55-69	90.6±0.5	86.50±0.50	78.9±1.8
	70-84	87.2±1.1	82.40±1.10	69.60±3.40
	85+	74.70±7.40	64.4±5.4	27.4±10.9
04-13	12-Mo RS			
	All	97.70±0.10 (60030)	96.70±0.10 (70552)	95.00±0.30 (8396)
	0-39	98.90±0.10 (8208)	98.40±0.10 (9617)	97.10±0.50 (1068)
	40-54	98.10±0.10 (16522)	97.30±0.10 (18470)	95.90±0.50 (2063)
	55-69	97.60±0.10 (19687)	96.50±0.10 (23364)	95.10±0.50 (2857)
	70-84	97.30±0.20 (12672)	96.10±0.20 (15358)	93.00±0.80 (1987)
	85+	94.90±0.90 (2941)	92.40±0.80 (3743)	94.20±2.30 (421)
	60-Mo RS			
	All	93.20±0.20 (60030)	90.00±0.20 (70552)	84.10±0.60 (8396)
	0-39	95.90±0.30 (8208)	94.6±0.3 (9617)	90.6±1.1 (1068)
	40-54	94.40±0.20 (16522)	91.80±0.30 (18470)	87.60±0.90 (2063)
	55-69	93.30±0.30 (19687)	89.80±0.30 (23364)	83.40±1.00 (2857)
	70-84	91.30±0.60 (12672)	86.50±0.60 (15358)	79.7±1.7 (1987)
	85+	83.0±2.6 (2941)	80.90±2.40 (3743)	63.10±6.90 (421)
	120-Mo RS			
	All	92.0±0.35	87.50±0.35	79.60±0.96
	0-39	94.60±0.5	82.80±0.46	88.80±1.35
	40-54	93.0±0.45	89.6±0.45	84.8±1.40
	55-69	92.6±0.45	87.00±0.58	78.00±1.45
	70-84	90.00±1.2	83.60±1.5	71.60±2.90
	85+	72.50±5.3	65.8±6.9	56.80±13.20

Abbreviations: Mo, month; RS, relative survival; SEM, standard error of the mean. * $P < 0.01$, ** $P < 0.001$, and *** $P < 0.0001$ for comparisons with the Low Poverty group.

Trends in incidence and survival in patients with melanoma, 1974

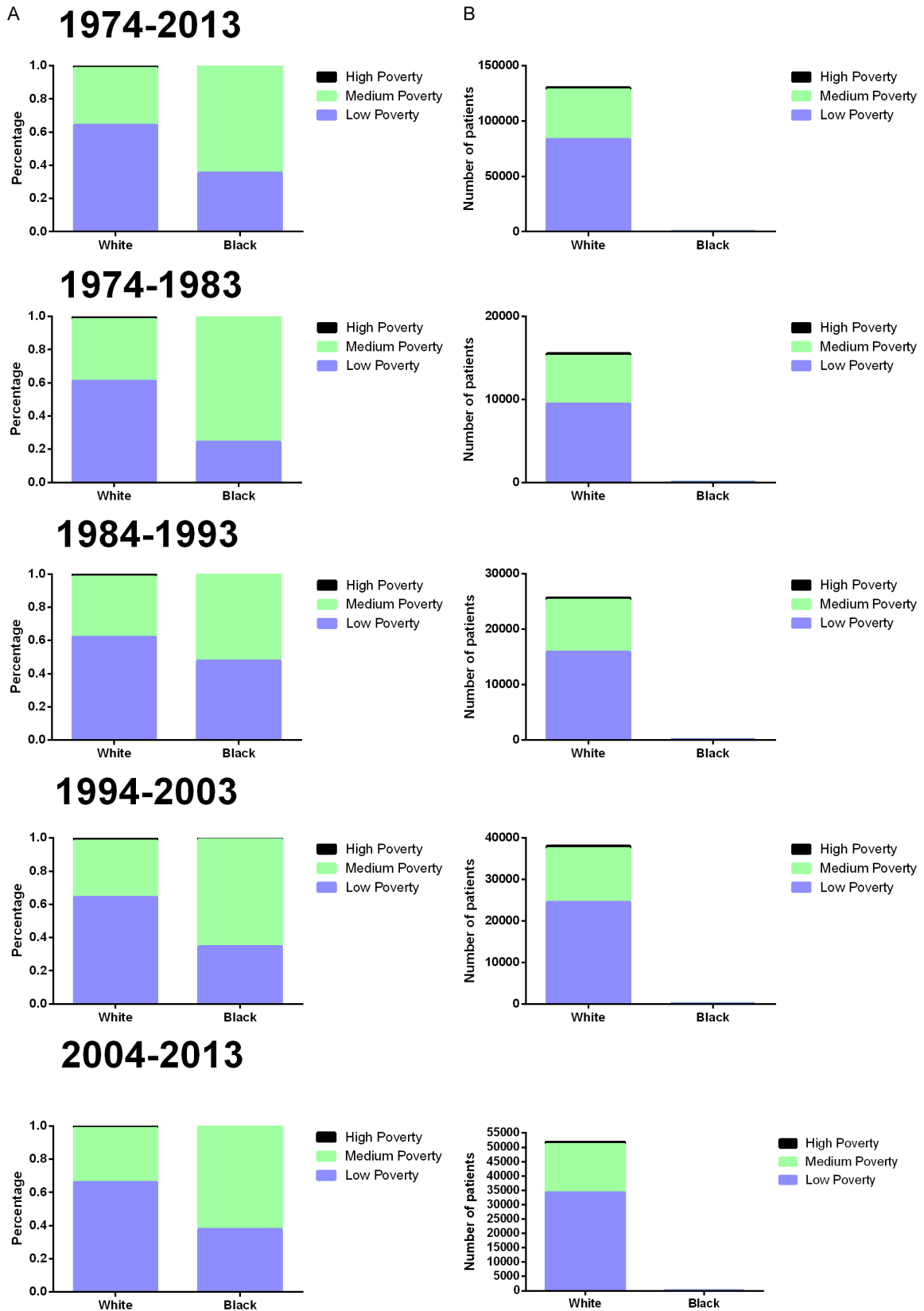


Figure S2. Changes of the distribution of SES in different races across four decades (A); and the numbers of patients with cutaneous melanoma of SES in different races across four decades (B).

Trends in incidence and survival in patients with melanoma, 1974

Table S3. Summary data for race distribution by SES and calendar period in patients with melanoma from 1974 to 2013 at eighteen SEER sites

Decades	SES	Number	White	Black	Other
1974-2013	Total	133996	100%	100%	100%
	Low Poverty	85275	64.1%	35.5%	44.6%
	Medium Poverty	46360	34.3%	64.2%	50.9%
	High Poverty	2177	1.6%	0.3%	4.5%
1974-1983	Total	16032	100%	100%	100%
	Low Poverty	9662	61.0%	24.3%	14.5%
	Medium Poverty	6044	37.2%	75.7%	78.6%
	High Poverty	292	1.8%	0	6.9%
1984-1993	Total	26441	100%	100%	100%
	Low Poverty	16216	61.9%	47.8%	26.3%
	Medium Poverty	9702	36.4%	52.2%	68%
	High Poverty	458	1.7%	0	5.7%
1994-2003	Total	38772	100%	100%	100%
	Low Poverty	24751	64.3%	34.8%	43.6%
	Medium Poverty	13305	34.0%	64.2%	52.4%
	High Poverty	671	1.7%	1.0%	4.0%
2004-2013	Total	52751	100%	100%	100%
	Low Poverty	36646	66.0%	37.8%	58.0%
	Medium Poverty	17309	32.6%	63.2%	38.0%
	High Poverty	756	1.4%	0	4.0%

Trends in incidence and survival in patients with melanoma, 1974

Table S4. Relative survival rates of cutaneous melanoma patients during the periods of 1974-2013 at eighteen SEER sites. Data are mean \pm standard error of the mean, with number of patients in parentheses

Age Group	Decade			
	1974-1983	1984-1993	1994-2003	2004-2013
12-Mo RS				
All	94.70 \pm 0.20 (15793)	96.50 \pm 0.10 (28102)***	97.10 \pm 0.10 (74669)***	97.20 \pm 0.1 (138153)
0-39	96.80 \pm 0.30 (4673)	97.80 \pm 0.20 (7396)**	98.50 \pm 0.10 (14047)***	98.60 \pm 0.10 (18850)
40-54	95.70 \pm 0.30 (4393)	97.00 \pm 0.20 (7622)***	97.60 \pm 0.10 (22740)**	97.70 \pm 0.10 (36936)
55-69	93.70 \pm 0.40 (4389)	96.10 \pm 0.30 (7609)***	96.90 \pm 0.10 (20007)**	97.00 \pm 0.10 (45652)
70-84	90.70 \pm 0.80 (2100)	95.10 \pm 0.50 (4635)***	95.90 \pm 0.20 (15048)	96.70 \pm 0.20 (29722)*
85+	89.10 \pm 2.50 (416)	90.40 \pm 1.70 (840)	93.70 \pm 0.90 (2827)	94.20 \pm 0.60 (6993)
60-Mo RS				
All	82.10 \pm 0.40	88.20 \pm 0.30***	90.50 \pm 0.20***	91.50 \pm 0.1***
0-39	86.90 \pm 0.50	91.40 \pm 0.30***	94.30 \pm 0.20***	95.10 \pm 0.20
40-54	74.10 \pm 0.60	89.20 \pm 0.40***	91.60 \pm 0.20***	93.00 \pm 0.20***
55-69	80.6 \pm 0.7	87.50 \pm 0.50***	90.50 \pm 0.30***	91.30 \pm 0.20*
70-84	72.10 \pm 1.50	84.20 \pm 1.00***	87.10 \pm 0.50**	88.80 \pm 0.50*
85+	61.60 \pm 5.30	73.0 \pm 3.4	76.80 \pm 2.20	81.90 \pm 1.70
120-Mo RS				
All	77.30 \pm 0.40	85.50 \pm 0.30***	88.40 \pm 0.20***	86.6 \pm 0.35***
0-39	82.80 \pm 0.60	88.60 \pm 0.40***	92.30 \pm 0.20***	93.6 \pm 0.30***
40-54	79.40 \pm 0.7	85.60 \pm 0.50***	89.20 \pm 0.30***	91.10 \pm 0.30***
55-69	75.00 \pm 0.90	85.8 \pm 0.6***	88.6 \pm 0.4***	89.20 \pm 0.35
70-84	66.2 \pm 2.0	80.9 \pm 1.3***	85.10 \pm 0.8**	86.40 \pm 0.80
85+	51.9 \pm 9.2	68.6 \pm 8.2	70.7 \pm 4.5	72.0 \pm 6.9

Abbreviations: Mo, month; RS, relative survival; SEM, standard error of the mean. * $P < 0.01$, ** $P < 0.001$, and *** $P < 0.0001$ for comparisons with the preceding decade.

Trends in incidence and survival in patients with melanoma, 1974

Table S5. 12-month relative survival rates of mucosal melanoma patients during the periods of 1974-2013 at eighteen SEER sites. Data are mean \pm standard error of the mean, with number of patients in parentheses

Age Group	Decade			
	1974-1983	1984-1993	1994-2003	2004-2013
12-Mo RS				
All	75.60 \pm 3.10 (221)	80.60 \pm 2.50 (308)	77.30 \pm 1.70 (684)	74.80 \pm 1.40 (1107)
0-39	89.40 \pm 5.80 (28)	97.3 \pm 2.7 (37)	79.50 \pm 5.80 (49)*	91.0 \pm 3.3 (82)
40-54	81.60 \pm 6.90 (32)	92.9 \pm 4.1 (41)	86.30 \pm 3.00 (136)	83.90 \pm 2.80 (192)
55-69	75.00 \pm 5.50 (65)	74.20 \pm 5.00 (82)	79.60 \pm 3.00 (193)	76.40 \pm 2.40 (350)
70-84	70.60 \pm 5.50 (80)	76.60 \pm 4.50 (108)	72.60 \pm 3.20 (230)	69.80 \pm 2.70 (358)
85+	64.3 \pm 14.2 (16)	75.90 \pm 8.80 (40)	66.6 \pm 6.5 (76)	59.50 \pm 5.30 (125)
60-Mo RS				
All	44.10 \pm 3.80	39.80 \pm 3.20	41.70 \pm 2.10	36.50 \pm 2.00
0-39	78.7 \pm 7.8	78.7 \pm 6.8	63.0 \pm 7.0	70.3 \pm 5.7
40-54	44.7 \pm 9.0	44.7 \pm 7.9	49.1 \pm 4.4	43.1 \pm 4.5
55-69	36.4 \pm 6.3	38.0 \pm 5.7	39.40 \pm 3.70	36.2 \pm 3.3
70-84	37.40 \pm 6.60	26.50 \pm 5.00	37.5 \pm 3.9	30.40 \pm 3.30
85+	32.7 \pm 17.0	31.3 \pm 10.8	27.3 \pm 7.6	16.2 \pm 6.3
120-Mo RS				
All	36.9 \pm 4.1	34.4 \pm 3.4	33.50 \pm 2.30	23.0 \pm 2.90*
0-39	75.3 \pm 8.2	73.5 \pm 7.4	63.0 \pm 7.0	65.2 \pm 6.5
40-54	42.8 \pm 9.2	32.8 \pm 7.5	39.40 \pm 4.40	28.1 \pm 5.2
55-69	27.5 \pm 6.2	35.5 \pm 6.00	33.0 \pm 3.7	17.3 \pm 5.7
70-84	23.3 \pm 6.9	19.4 \pm 5.4	25.7 \pm 4.0	19.9 \pm 4.5
85+	28.6 \pm 27.7	20.1 \pm 19.0	0 \pm 0	0 \pm 0

Abbreviations: Mo, month; RS, relative survival; SEM, standard error of the mean. * $P < 0.01$ for comparisons with the preceding decade.

Trends in incidence and survival in patients with melanoma, 1974

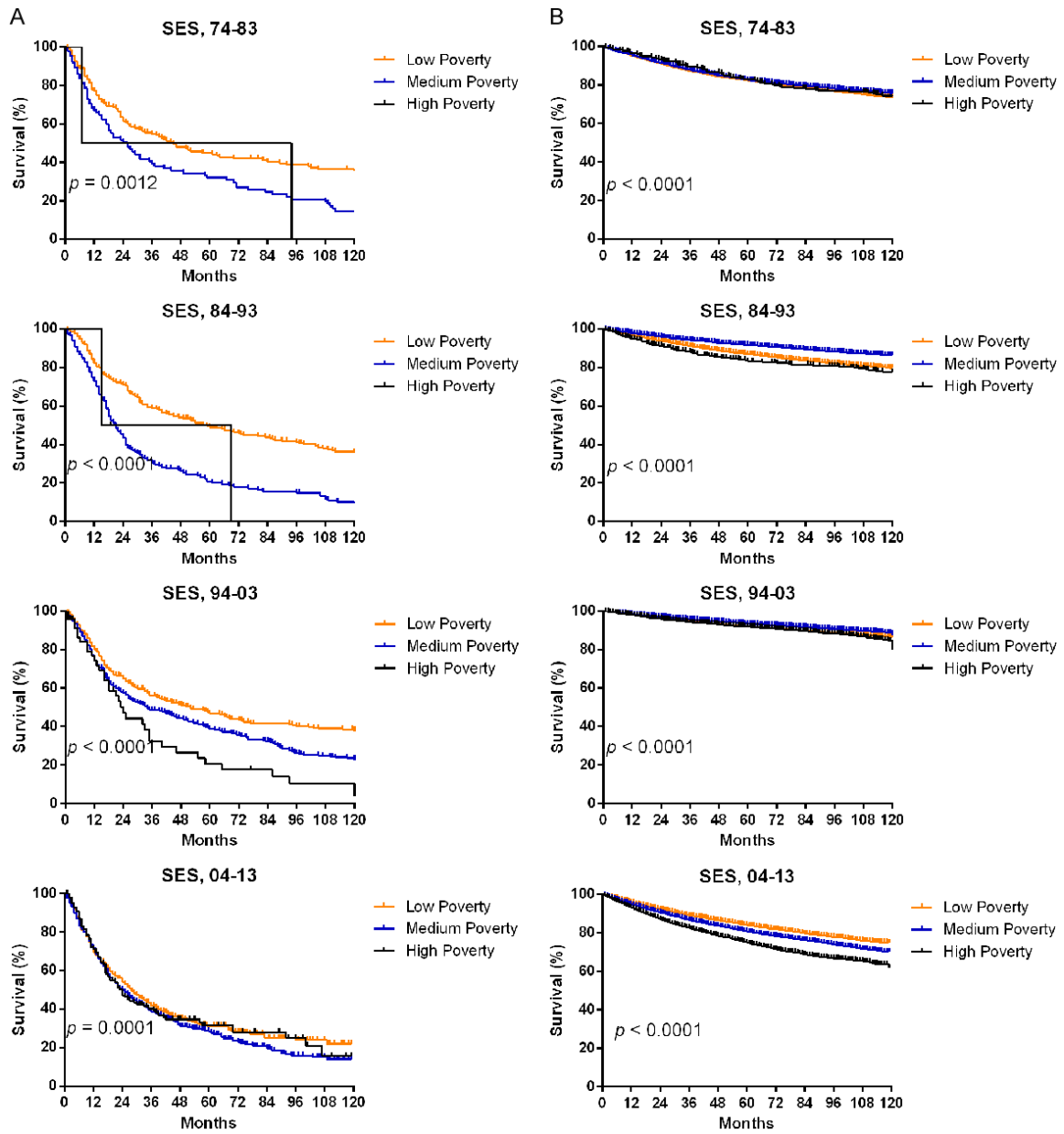


Figure S3. Trends in Kaplan-Meier survival analysis for patients with two types melanoma at eighteen SEER sites in SES across four decades. (A for mucosal melanoma, while B for cutaneous melanoma).