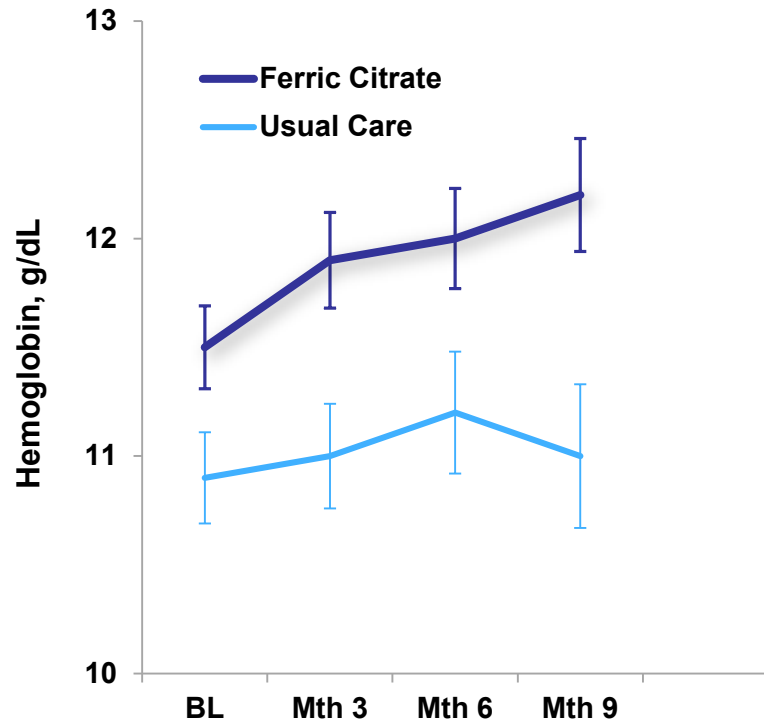


Supplemental Figure References

Supplemental Figure 1: Biochemical Parameters in Diabetic and Non-Diabetic Patients. Mean values of hemoglobin (diabetic, panel A; non-diabetic, panel F), transferrin saturation (diabetic, panel B; non-diabetic, panel G), median serum ferritin (diabetic, panel C; non-diabetic, panel H), mean values of serum phosphate (diabetic, panel D; non-diabetic, panel I), and median intact fibroblast growth factor 23 (diabetic panel E; non-diabetic, panel J).

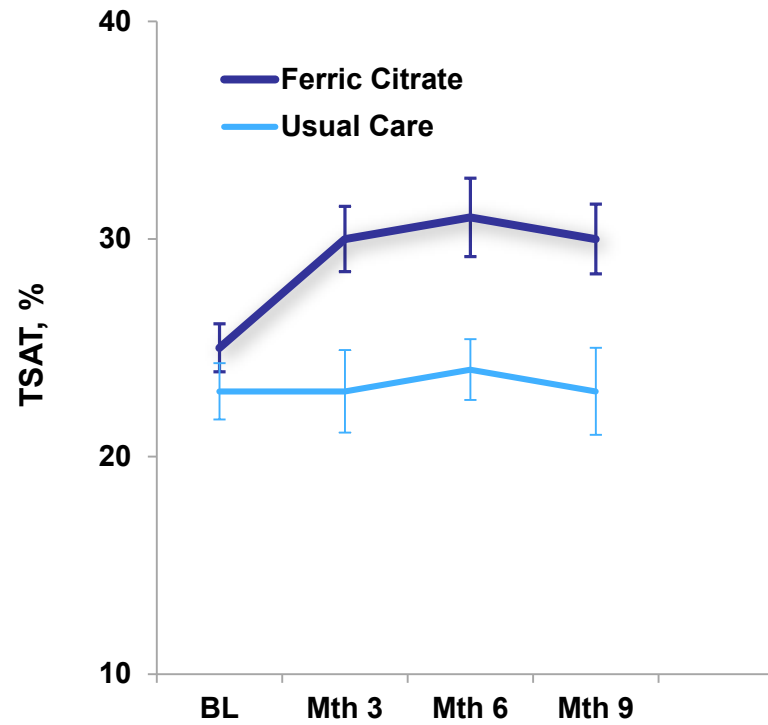
Supplemental Figure 2: Kaplan-Meier Survival Function Curve for time to the composite endpoint of Death, Dialysis or Transplant in diabetic patients (panel A) and non-diabetic patients (panel B).

A) Hemoglobin



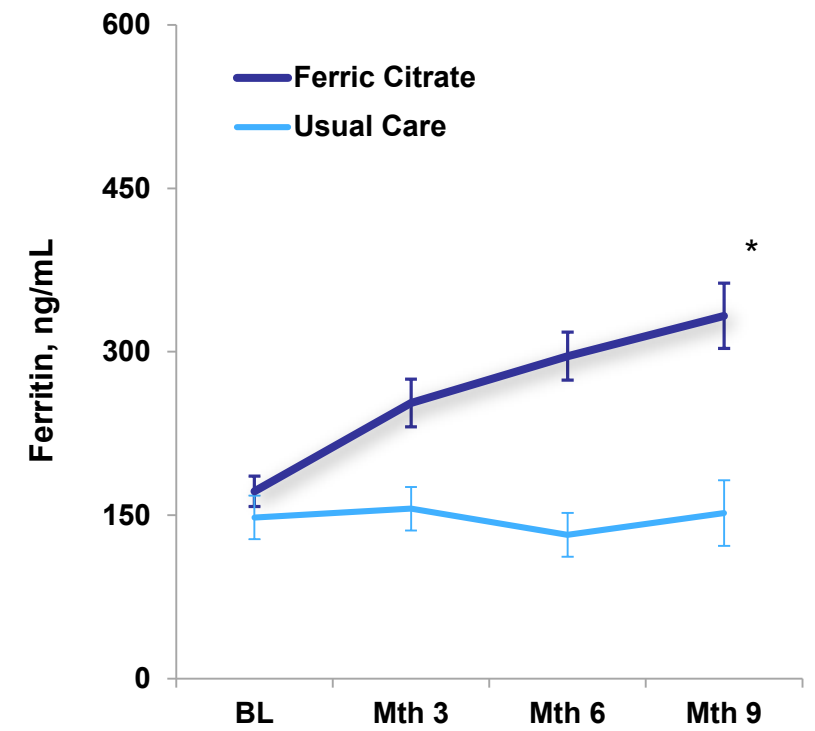
Ferric Citrate	63	55	50	40
Usual Care	51	40	27	22

B) TSAT



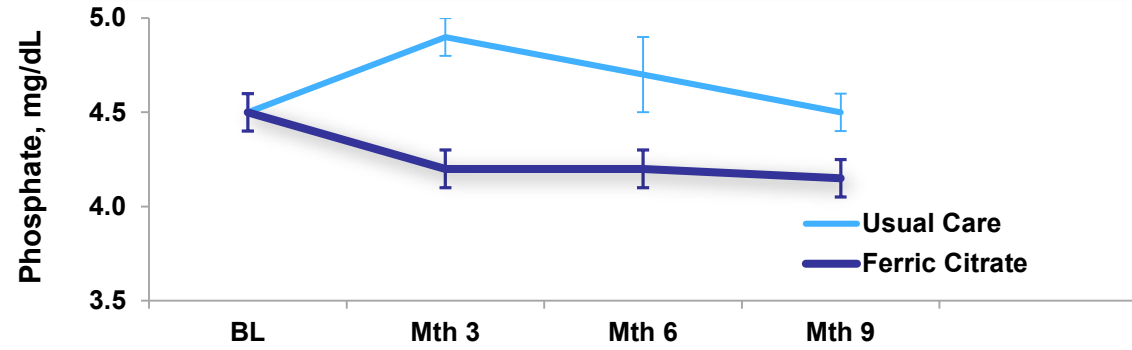
Ferric Citrate	63	55	50	41
Usual Care	51	40	27	22

C) Ferritin



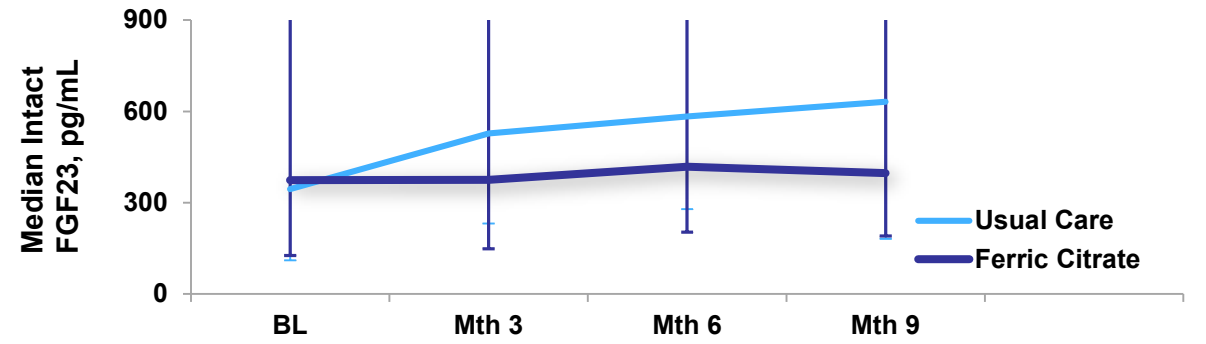
Ferric Citrate	63	55	50	41
Usual Care	51	39	27	22

D) Phosphate



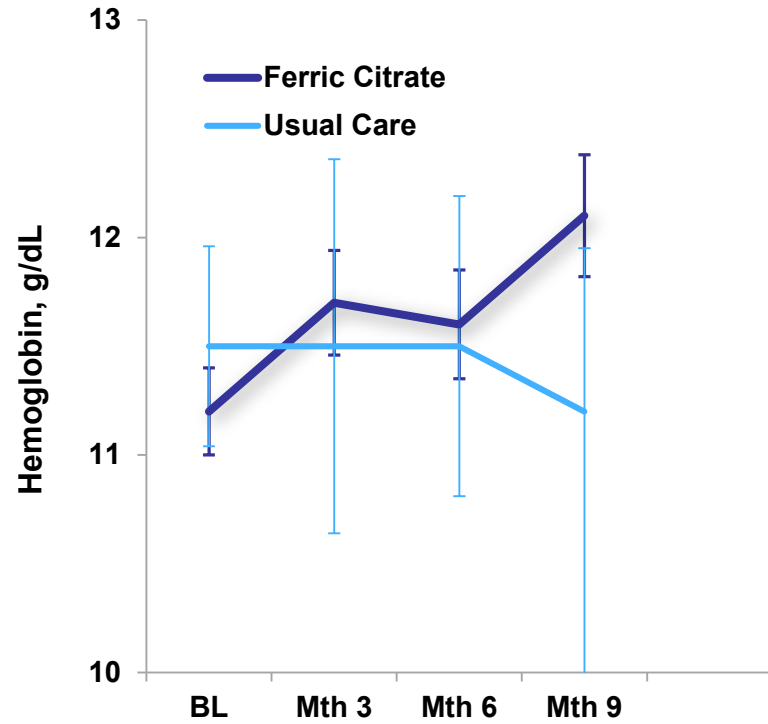
Ferric Citrate	63	55	50	41
Usual Care	51	40	27	22

E) Intact FGF23



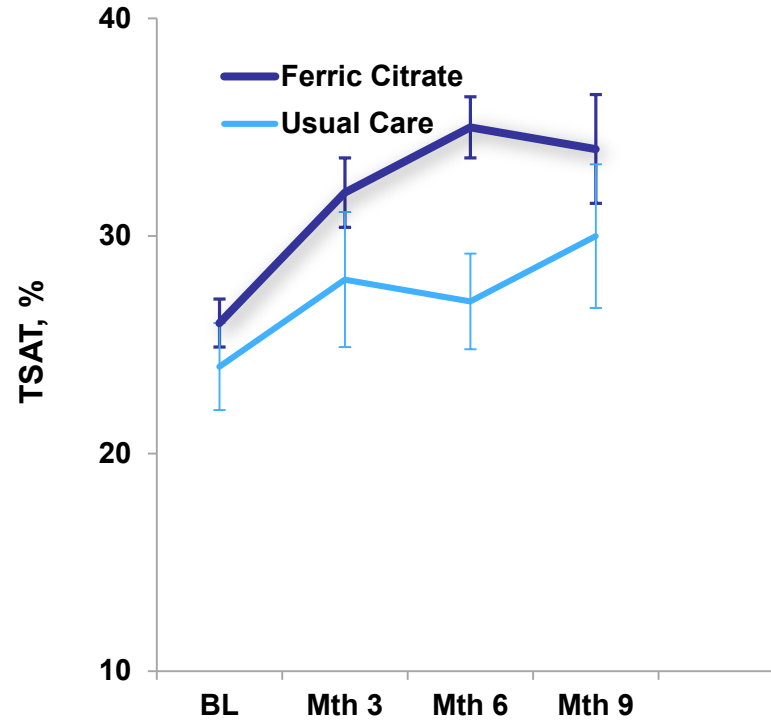
Ferric Citrate	63	55	49	41
Usual Care	51	39	27	21

F) Hemoglobin



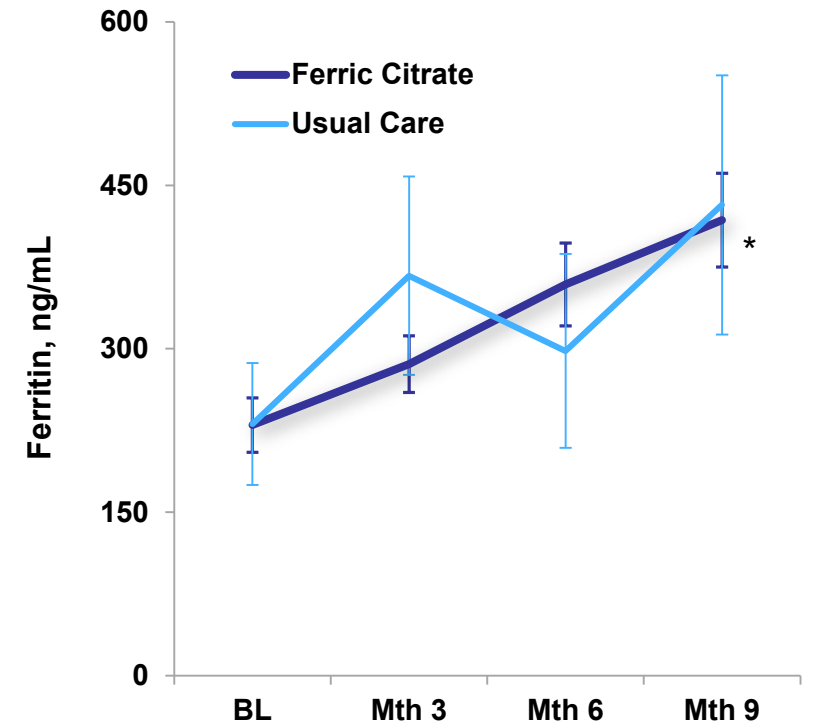
Ferric Citrate	70	60	42	35
Usual Care	15	7	7	7

G) TSAT



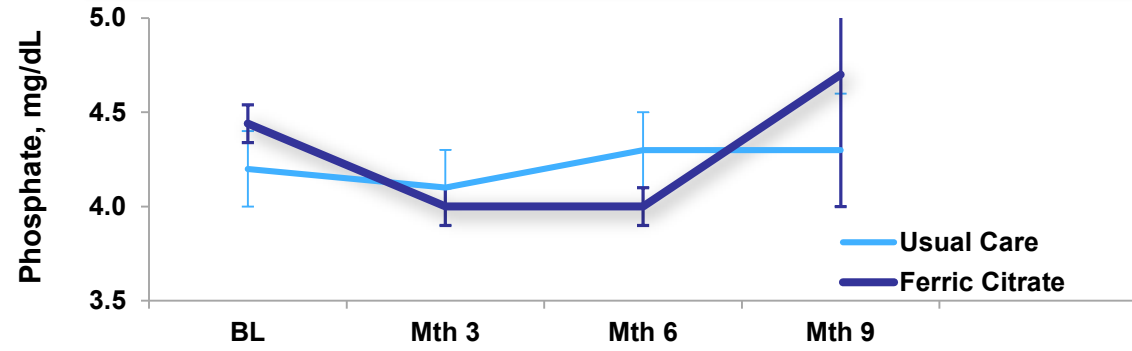
Ferric Citrate	70	60	42	35
Usual Care	15	7	7	7

H) Ferritin



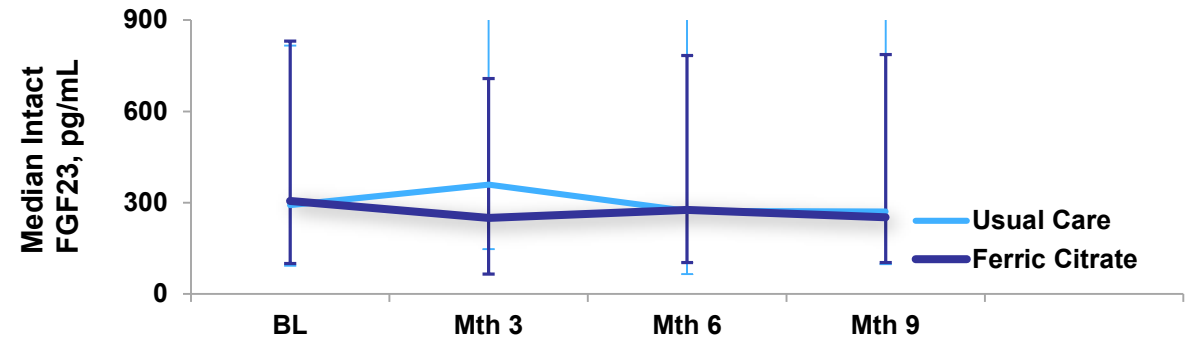
Ferric Citrate	70	60	42	34
Usual Care	15	7	7	7

I) Phosphate



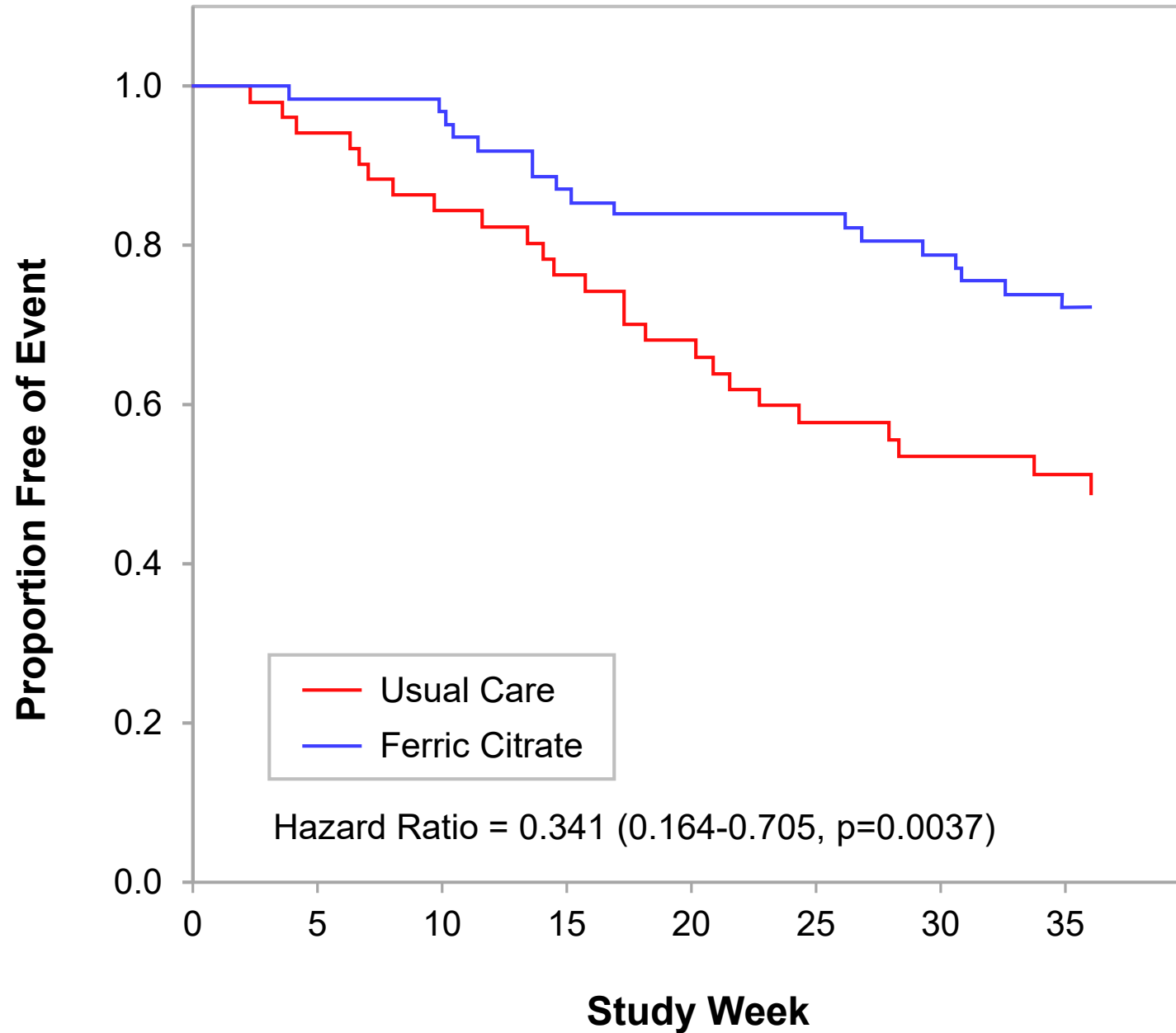
Ferric Citrate	70	60	42	35
Usual Care	15	7	7	7

J) Intact FGF23

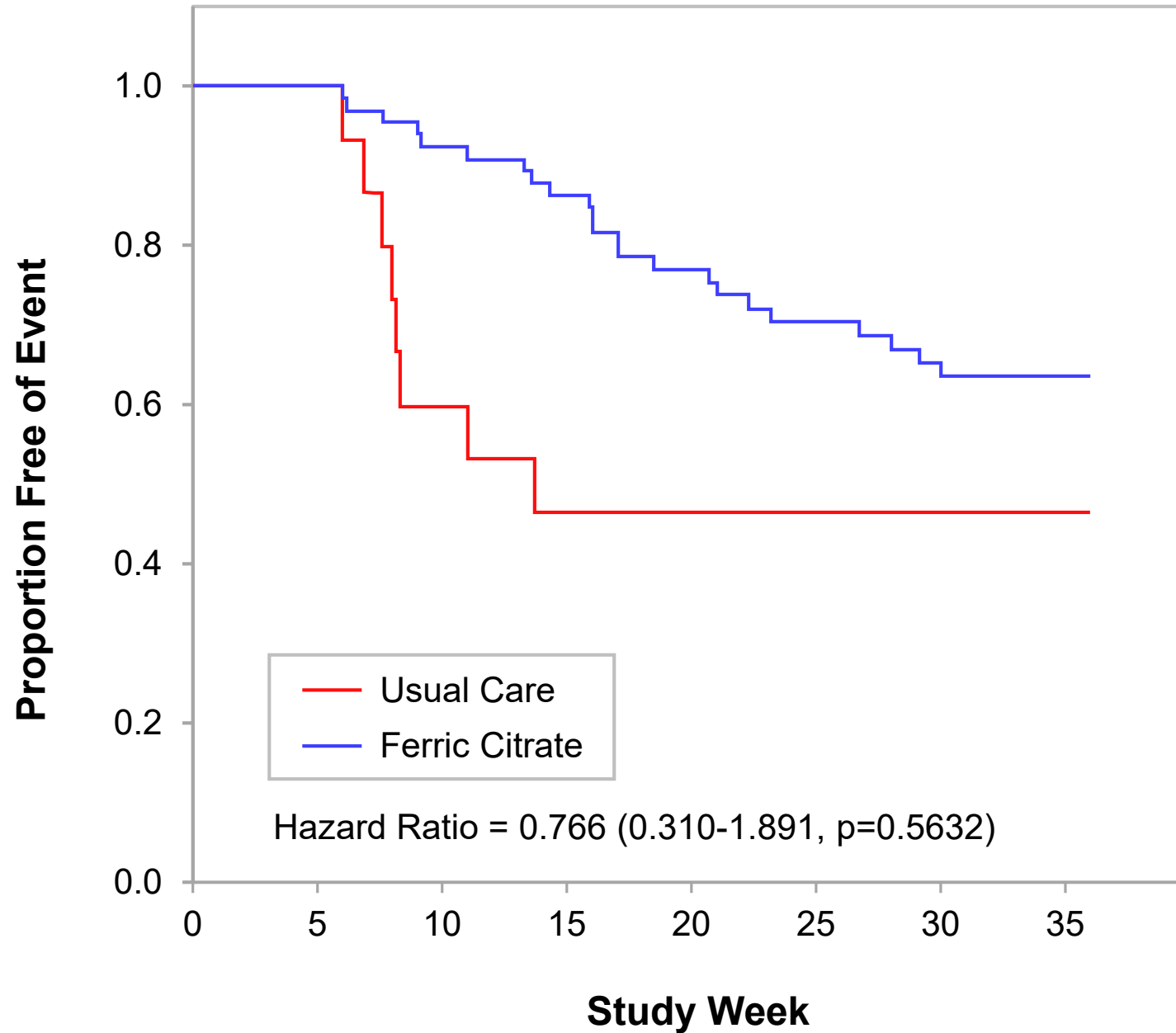


Ferric Citrate	70	60	42	34
Usual Care	15	7	7	7

Panel A



Panel B



Ferritin (ng/mL, median (IQR))				
	n=	UC	n=	FC
Baseline	66	106 (63,214)	133	165 (81, 253)
Week 4	6	177 (62, 233)	12	248 (194, 328)
Week 8	1	88 (88, 88)	1	114 (114,114)
Week 12	46	133 (71, 287)	115	230 (135, 337)
Week 16	0		2	258 (127, 388)
Week 20	0		3	387 (45, 528)
Week 24	34	104 (67, 235)	92	274 (168, 447)
Week 28	0		2	388 (269, 506)
Week 32	1	80 (80, 80)	2	379 (347, 411)
Week 36	29	123 (78, 318)	75	322 (204, 500)

IRON (mcg/dL, mean (SD))				
	n=	UC	n=	FC
Baseline	11	66.7 (24.4)	22	70.7 (20.2)
Week 4	56	64.8 (25.0)	121	75.4 (26.7)
Week 8	53	61.4 (22.5)	124	75.8 (27.2)
Week 12	47	69.3 (37.5)	115	80.3 (30.4)
Week 16	42	61.7 (22.0)	104	82.2 (29.6)
Week 20	37	69.8 (21.1)	97	77.5 (24.6)
Week 24	34	78.5 (45.6)	92	81.9 (24.5)
Week 28	31	64.1 (18.6)	85	80.0 (27.6)
Week 32	30	70.4 (25.8)	77	90.0 (72.3)
Week 36	28	67.8 (23.2)	75	81.3 (29.9)

Hematocrit (% , mean (SD))				
	n=	UC	n=	FC
Baseline	66	33.5 (4.8)	133	34.3 (4.8)
Week 4	62	33.4 (4.7)	130	34.6 (4.9)
Week 8	53	33.7 (4.8)	124	35.0 (5.0)
Week 12	47	33.6 (5.1)	115	35.6 (5.1)
Week 16	42	33.2 (4.4)	105	35.6 (5.3)
Week 20	37	34.0 (4.3)	97	35.3 (4.9)
Week 24	34	34.2 (4.9)	92	35.4 (5.6)
Week 28	32	33.6 (4.8)	86	35.7 (5.0)
Week 32	30	33.2 (4.5)	79	36.6 (5.9)
Week 36	29	33.2 (5.0)	75	36.5 (5.0)

WBC (cells/mcL, mean (SD))				
	n=	UC	n=	FC
Baseline	66	7.1 (1.8)	133	6.8 (2.0)
Week 4	62	7.1 (2.3)	130	6.8 (1.9)
Week 8	53	7.0 (1.9)	124	6.7 (1.9)
Week 12	47	7.2 (2.0)	115	6.9 (1.9)
Week 16	42	6.9 (1.7)	105	6.9 (2.3)
Week 20	37	7.0 (2.0)	97	6.9 (2.2)
Week 24	34	6.9 (2.0)	92	6.8 (1.9)
Week 28	32	7.0 (1.8)	86	6.9 (1.9)
Week 32	30	6.9 (2.5)	79	7.0 (2.0)
Week 36	29	7.0 (2.3)	75	6.7 (1.8)

TSAT (% , mean (SD))				
	n=	UC	n=	FC
Baseline	66	22.8 (8.8)	133	25.3 (9.1)
Week 4	56	23.5 (9.9)	121	28.4 (10.0)
Week 8	53	21.7 (7.6)	124	29.3 (10.6)
Week 12	47	24.1 (11.8)	115	31 (11.9)
Week 16	42	21.8 (7.5)	104	32.0 (11.3)
Week 20	37	23.9 (7.7)	97	30.4 (9.4)
Week 24	34	24.5 (6.9)	92	32.6 (11.3)
Week 28	31	22.6 (5.9)	86	31.7 (12.3)
Week 32	30	25.9 (9.0)	78	32.2 (11.6)
Week 36	29	24.9 (9.5)	76	31.9 (12.5)

Platelets (cells/mcL, mean (SD))				
	n=	UC	n=	FC
Baseline	66	239.9 (75.2)	133	222.2 (75.9)
Week 4	61	240.5 (77.7)	130	221.2 (72.4)
Week 8	52	235.2 (63.3)	124	215.9 (71.6)
Week 12	47	250.0 (67.9)	115	215.2 (68.9)
Week 16	42	227.2 (59.2)	105	213.0 (74.3)
Week 20	37	232.6 (58.4)	97	208.2 (67.8)
Week 24	34	229.2 (66.6)	92	208.2 (64.4)
Week 28	32	225.5 (59.0)	86	216.3 (71.8)
Week 32	30	227.9 (61.6)	79	205.2 (66.7)
Week 36	29	234.8 (76.1)	75	204.8 (64.5)

Phosphorus (mg/dL, mean (SD))				
	n=	UC	n=	FC
Baseline	66	4.4 (0.7)	133	4.5 (0.9)
Week 4	62	4.7 (0.8)	130	4.0 (1.0)
Week 8	53	4.5 (0.9)	124	4.1 (0.8)
Week 12	47	4.7 (0.9)	115	4.1 (0.8)
Week 16	42	4.6 (0.9)	105	4.0 (0.8)
Week 20	37	4.4 (0.7)	97	4.2 (0.9)
Week 24	34	4.7 (0.7)	92	4.1 (0.8)
Week 28	32	4.7 (0.9)	85	4.1 (0.9)
Week 32	30	4.7 (1.0)	79	4.1 (0.8)
Week 36	29	4.5 (0.7)	76	4.4 (3.0)

Hemoglobin, (g/dL, mean (SD))				
	n=	UC	n=	FC
Baseline	66	11.0 (1.6)	133	11.3 (1.6)
Week 4	62	11.1 (1.5)	130	11.4 (1.6)
Week 8	53	11.1 (1.6)	124	11.6 (1.6)
Week 12	47	11.1 (1.6)	115	11.8 (1.7)
Week 16	42	10.9 (1.4)	105	11.8 (1.7)
Week 20	37	11.1 (1.4)	97	11.7 (1.6)
Week 24	34	11.3 (1.5)	92	11.8 (1.6)
Week 28	32	11.2 (1.5)	86	11.8 (1.6)
Week 32	30	11.1 (1.5)	79	12.0 (1.6)
Week 36	29	11.0 (1.6)	75	12.1 (1.6)

BUN (mg/dL, mean (SD))				
	n=	UC	n=	FC
Baseline	66	61.2 (16.5)	133	59.1 (18.1)
Week 4	62	61.2 (18.2)	130	57.0 (19.2)
Week 8	53	59.5 (15.7)	123	58.4 (18.8)
Week 12	47	61.1 (16.1)	115	58.4 (19.3)
Week 16	42	59.4 (11.3)	104	58.2 (17.2)
Week 20	37	57.6 (12.7)	97	59.8 (17.2)
Week 24	34	60.7 (14.7)	92	60.0 (17.3)
Week 28	32	64.3 (15.4)	86	59.7 (17.2)
Week 32	30	64.7 (13.7)	79	60.6 (20.0)
Week 36	29	62.2 (15.4)	76	57.6 (16.4)

Creatinine (mg/dL, mean (SD))				
	n=	UC	n=	FC
Baseline	66	4.2 (1.5)	133	4.2 (1.4)
Week 4	62	4.3 (1.4)	130	4.3 (1.7)
Week 8	53	4.2 (1.6)	123	4.4 (1.9)
Week 12	47	4.3 (1.6)	115	4.4 (1.8)
Week 16	42	4.1 (1.5)	104	4.3 (1.5)
Week 20	37	3.9 (1.1)	97	4.3 (1.3)
Week 24	34	4.1 (1.2)	92	4.3 (1.4)
Week 28	32	4.4 (1.5)	86	4.3 (1.5)
Week 32	30	4.3 (1.4)	79	4.2 (1.3)
Week 36	29	4.1 (1.2)	76	4.2 (1.4)

Glucose (mg/dL, mean (SD))				
	n=	UC	n=	FC
Baseline	66	155.8 (65.5)	133	129.0 (58.6)
Week 4	62	148.8 (70.1)	130	134.5 (76.1)
Week 8	53	153.3 (84.8)	123	134.6 (65.6)
Week 12	47	146.1 (68.6)	115	140.3 (90.8)
Week 16	42	153.9 (74.7)	104	138.8 (63.9)
Week 20	37	156.7 (72.8)	97	137.4 (65.3)
Week 24	34	148.8 (78.4)	92	136.2 (69.4)
Week 28	32	153.1 (82.2)	86	144.0 (69.9)
Week 32	30	150.2 (66.3)	79	141.8 (70.5)
Week 36	29	146.3 (76.8)	76	138.0 (66.3)

Sodium (mmol/L, mean (SD))				
	n=	UC	n=	FC
Baseline	66	138.4 (2.8)	133	138.7 (2.9)
Week 4	62	138.4 (3.1)	130	138.7 (3.2)
Week 8	53	138.8 (2.9)	123	138.5 (3.2)
Week 12	47	138.7 (3.0)	115	138.3 (3.7)
Week 16	42	138.0 (2.6)	104	138.6 (2.9)
Week 20	37	138.8 (3.8)	97	138.6 (2.9)
Week 24	34	137.9 (2.6)	92	138.6 (3.1)
Week 28	32	137.5 (2.7)	86	138.7 (2.8)
Week 32	30	137.2 (2.6)	79	138.9 (2.8)
Week 36	29	137.3 (3.6)	76	138.9 (2.8)

Potassium (mmol/L, mean (SD))				
	n=	UC	n=	FC
Baseline	66	4.3 (0.6)	133	4.5 (0.5)
Week 4	62	4.3 (0.5)	130	4.5 (0.5)
Week 8	53	4.4 (0.6)	123	4.5 (0.4)
Week 12	47	4.4 (0.5)	115	4.5 (0.4)
Week 16	42	4.4 (0.5)	104	4.5 (0.5)
Week 20	37	4.4 (0.4)	97	4.5 (0.5)
Week 24	34	4.4 (0.4)	92	4.5 (0.5)
Week 28	32	4.6 (0.5)	86	4.5 (0.5)
Week 32	30	4.5 (0.4)	79	4.4 (0.4)
Week 36	29	4.5 (0.5)	76	4.4 (0.4)

GFR (mL/min/1.73m ² , mean (SD))				
	n=	UC	n=	FC
Baseline	66	14.5 (4.1)	133	14.2 (3.9)
Week 4	62	14.0 (3.7)	130	14.2 (4.3)
Week 8	53	14.6 (4.2)	123	13.9 (4.4)
Week 12	46	14.2 (4.2)	115	13.9 (4.2)
Week 16	42	14.5 (4.0)	104	14.0 (4.4)
Week 20	37	15.0 (3.8)	97	13.7 (4.2)
Week 24	34	14.0 (3.7)	92	13.8 (4.0)
Week 28	32	13.0 (3.5)	86	13.8 (4.2)
Week 32	30	13.4 (3.8)	79	14.2 (4.2)
Week 36	29	14.1 (4.7)	76	14.2 (4.1)

Bicarbonate (mmol/L, mean (SD))				
	n=	UC	n=	FC
Baseline	66	21.2 (3.5)	133	20.4 (3.4)
Week 4	62	21.3 (3.8)	130	21.3 (3.2)
Week 8	53	21.4 (3.4)	122	21.2 (3.1)
Week 12	46	21.2 (3.3)	115	21.0 (3.1)
Week 16	42	21.6 (2.9)	104	21.1 (3.4)
Week 20	37	21.2 (2.9)	97	21.0 (3.2)
Week 24	34	21.6 (2.8)	92	21.5 (3.3)
Week 28	32	21.4 (2.7)	86	21.3 (3.2)
Week 32	30	21.2 (3.0)	78	21.9 (3.3)
Week 36	29	21.3 (3.0)	76	22.0 (3.3)

Calcium (mg/dL, mean (SD))				
	n=	UC	n=	FC
Baseline	66	8.9 (0.7)	133	9.0(0.6)
Week 4	62	8.9 (0.7)	130	9.0 (0.6)
Week 8	53	8.9 (0.6)	123	9.1 (0.6)
Week 12	47	8.9 (0.8)	115	9.1 (0.6)
Week 16	42	8.9 (0.8)	104	9.0 (0.7)
Week 20	37	9.1 (0.5)	97	9.1 (0.7)
Week 24	34	9.2 (0.5)	92	9.1 (0.7)
Week 28	32	9.2 (0.4)	86	9.2 (0.8)
Week 32	30	9.1 (0.5)	79	9.1 (0.6)
Week 36	29	9.1 (0.4)	76	9.1 (0.7)

Chloride (mmol/L, mean (SD))				
	n=	UC	n=	FC
Baseline	66	105.9 (4.0)	133	107.1 (4.4)
Week 4	62	105.5 (4.9)	130	106.3 (4.0)
Week 8	53	105.8 (4.5)	123	106.5 (4.1)
Week 12	47	105.9 (4.9)	115	106.4 (4.3)
Week 16	42	105.3 (4.2)	104	106.5 (4.0)
Week 20	37	105.6 (4.7)	97	106.5 (4.1)
Week 24	34	104.9 (3.7)	92	106.0 (4.3)
Week 28	32	105.1 (3.6)	86	106.2 (3.9)
Week 32	30	104.9 (4.5)	79	106.5 (4.1)
Week 36	29	104.9 (4.8)	76	106.3 (3.8)

Albumin (g/dL, mean (SD))				
	n=	UC	n=	FC
Baseline	66	3.7 (0.5)	133	3.9 (0.4)
Week 4	62	3.8 (0.5)	129	3.9 (0.4)
Week 8	53	3.8 (0.4)	123	3.9 (0.4)
Week 12	47	3.8 (0.5)	115	3.9 (0.4)
Week 16	42	3.9 (0.6)	104	3.9 (0.4)
Week 20	37	3.9 (0.4)	97	3.9 (0.4)
Week 24	34	3.9 (0.4)	92	3.9 (0.4)
Week 28	32	3.9 (0.4)	86	3.9 (0.4)
Week 32	30	3.9 (0.4)	79	4.0 (0.3)
Week 36	29	3.9 (0.4)	76	4.0 (0.4)

Bilirubin (mg/dL, mean (SD))				
	n=	UC	n=	FC
Baseline	66	0.5 (0.3)	133	0.4 (0.2)
Week 4	62	0.5 (0.2)	129	0.5 (0.2)
Week 8	53	0.5 (0.2)	123	0.5 (0.2)
Week 12	47	0.4 (0.1)	115	0.5 (0.2)
Week 16	42	0.5 (0.1)	104	0.5 (0.2)
Week 20	37	0.5 (0.2)	97	0.5 (0.2)
Week 24	34	0.5 (0.1)	92	0.5 (0.2)
Week 28	32	0.4 (0.1)	86	0.5 (0.2)
Week 32	30	0.5 (0.1)	79	0.5 (0.2)
Week 36	29	0.5 (0.2)	76	0.5 (0.2)

Total Protein (g/dL, mean (SD))				
	n=	UC	n=	FC
Baseline	66	6.5 (0.6)	133	6.6 (0.5)
Week 4	62	6.5 (0.7)	130	6.5 (0.5)
Week 8	53	6.6 (0.7)	123	6.5 (0.5)
Week 12	47	6.7 (0.6)	115	6.6 (0.6)
Week 16	42	6.6 (0.6)	104	6.5 (0.5)
Week 20	37	6.8 (0.6)	97	6.5 (0.5)
Week 24	34	6.9 (0.6)	92	6.6 (0.5)
Week 28	32	6.8 (0.6)	86	6.5 (0.5)
Week 32	30	6.8 (0.7)	79	6.6 (0.5)
Week 36	29	6.8 (0.5)	76	6.6 (0.5)

AST (U/L, mean (SD))				
	n=	UC	n=	FC
Baseline	66	18.3 (8.0)	133	17.4 (7.3)
Week 4	62	17.7 (6.5)	129	17.7 (9.5)
Week 8	53	18.2 (8.1)	123	17.7 (8.2)
Week 12	47	17.9 (6.7)	115	16.9 (5.9)
Week 16	42	18.0 (5.6)	104	17.1 (6.4)
Week 20	37	18.2 (7.0)	97	16.7 (6.7)
Week 24	34	19.4 (6.9)	92	16.9 (5.6)
Week 28	32	18.1 (6.2)	86	17.1 (5.8)
Week 32	30	18.4 (8.4)	79	16.5 (5.3)
Week 36	29	17.0 (6.1)	76	17.1 (6.0)

ALT (U/L, mean (SD))				
	n=	UC	n=	FC
Baseline	66	17.5 (11.9)	133	16.7 (9.9)
Week 4	62	17.0 (11.1)	129	16.8 (9.9)
Week 8	53	17.7 (11.2)	123	17.7 (12.3)
Week 12	47	16.2 (9.5)	115	16.0 (6.7)
Week 16	42	16.3 (8.0)	104	17.0 (8.6)
Week 20	37	16.1 (8.8)	97	15.9 (7.7)
Week 24	34	17.6 (10.7)	92	16.8 (8.8)
Week 28	32	15.9 (9.1)	86	16.7 (7.2)
Week 32	30	17.0 (11.2)	79	17.0 (10.9)
Week 36	29	15.8 (11.8)	76	17.2 (9.3)

ALP (U/L, mean (SD))				
	n=	UC	n=	FC
Baseline	66	87.9 (39.1)	133	87.9 (60.2)
Week 4	62	83.5 (36.1)	129	90.6 (72.1)
Week 8	53	85.5 (40.8)	123	93.8 (98.3)
Week 12	47	86.7 (37.3)	115	103.6 (171.2)
Week 16	42	86.7 (39.4)	104	98.5 (132.2)
Week 20	37	78.0 (25.8)	97	105.3 (156.6)
Week 24	34	79.6 (30.1)	92	107.7 (181.4)
Week 28	32	78.8 (30.8)	86	113.2 (213.1)
Week 32	30	81.8 (32.3)	79	115.3 (220.7)
Week 36	29	84.1 (33.2)	76	117.3 (215.7)

iFGF23 (pg/mL, median (IQR))				
	n=	UC	n=	FC
Baseline	64	330.7 (229.2, 704.4)	132	351.8 (221.9, 552.2)
Week 4	0		2	743.4 (312.7, 1174)
Week 8	1	1056 (1056, 1056)	0	
Week 12	46	490.7 (295.7, 859.1)	115	322.2 (202, 551.7)
Week 16	0		2	4102 (596.1, 7607.4)
Week 20	0		3	329.6 (118.2, 677.8)
Week 24	34	515.4 (270.4, 905.3)	91	321.3 (183.9, 684.7)
Week 28	0		1	297.3 (297.3, 297.3)
Week 32	1	164 (164, 164)	3	466.9 (79.3, 3314.6)
Week 36	28	558.4 (305.3, 1206.4)	75	321.3 (177, 617.7)

PTH (pg/mL, median (IQR))				
	n=	UC	n=	FC
Baseline	64	163.5 (102, 168)	130	164.5 (99,261.5)
Week 4	0		1	208 (208, 208)
Week 8	1	70 (70, 70)	1	301 (301, 301)
Week 12	46	145 (87,286)	114	141 (90, 229)
Week 16	0		2	245.5 (109, 382)
Week 20	0		3	156 (91, 258)
Week 24	34	146.5 (117, 198)	91	155 (91, 218)
Week 28	0		2	149.5 (125, 174)
Week 32	1	132 (132, 132)	2	59 (39,79)
Week 36	28	144.5 (71.5, 184)	73	173 (101, 244)

Stratum 1: Active=1 Ferric Citrate

Product-Limit Survival Estimates

Week	Survival	Failure	Error	Failed	Left
0.0000	1.0000	0	0	0	133
3.0000*				0	132
3.1429*				0	131
3.8571	0.9924	0.00763	0.00760	1	130
4.1429*				1	129
5.4286*				1	128
6.0000	0.9846	0.0154	0.0108	2	127
6.1429	0.9769	0.0231	0.0132	3	126
7.2857*				3	125
7.5714	0.9690	0.0310	0.0152	4	124
9.0000	0.9612	0.0388	0.0170	5	123
9.1429	0.9534	0.0466	0.0186	6	122
9.8571	0.9456	0.0544	0.0200	7	121
10.1429	0.9378	0.0622	0.0213	8	120
10.4286	0.9300	0.0700	0.0225	9	119
11.0000	0.9222	0.0778	0.0236	10	118
11.4286	0.9143	0.0857	0.0247	11	117
13.2857	0.9065	0.0935	0.0257	12	116
13.5714				13	115
13.5714				14	114
13.5714	0.8831	0.1169	0.0284	15	113
14.2857	0.8753	0.1247	0.0292	16	112
14.5714	0.8675	0.1325	0.0299	17	111
15.1429	0.8596	0.1404	0.0307	18	110
15.7143*				18	109
15.8571	0.8518	0.1482	0.0314	19	108
16.0000				20	107
16.0000	0.8360	0.1640	0.0327	21	106
16.2857*				21	105
16.8571	0.8280	0.1720	0.0334	22	104
17.0000				23	103
17.0000	0.8121	0.1879	0.0346	24	102
17.1429*				24	101
18.4286	0.8041	0.1959	0.0352	25	100
19.2857*				25	99
20.0000*				25	98

Stratum 1: Active=1 Ferric Citrate**Product-Limit Survival Estimates**

Week	Survival	Failure	Error	Failed	Left
20.7143	0.7958	0.2042	0.0357	26	97
21.0000	0.7876	0.2124	0.0363	27	96
21.4286*				27	95
22.2857	0.7794	0.2206	0.0369	28	94
23.1429	0.7711	0.2289	0.0374	29	93
24.0000*				29	92
24.0000*				29	91
26.1429	0.7626	0.2374	0.0379	30	90
26.7143	0.7541	0.2459	0.0384	31	89
26.8571	0.7456	0.2544	0.0389	32	88
28.0000	0.7372	0.2628	0.0394	33	87
29.1429	0.7287	0.2713	0.0398	34	86
29.2857	0.7202	0.2798	0.0403	35	85
30.0000	0.7117	0.2883	0.0407	36	84
30.1429*				36	83
30.5714	0.7032	0.2968	0.0411	37	82
30.8571	0.6946	0.3054	0.0415	38	81
31.7143*				38	80
32.5714	0.6859	0.3141	0.0419	39	79
34.1429*				39	78
34.8571	0.6771	0.3229	0.0422	40	77

Stratum 2: SOC=0 = Standard of Care

Product-Limit Survival Estimates

Week	Survival	Failure	Error	Failed	Left
0.0000	1.0000	0	0	0	66
2.2857	0.9848	0.0152	0.0150	1	65
3.5714	0.9697	0.0303	0.0211	2	64
4.1429	0.9545	0.0455	0.0256	3	63
6.0000	0.9394	0.0606	0.0294	4	62
6.2857	0.9242	0.0758	0.0326	5	61
6.7143	0.9091	0.0909	0.0354	6	60
6.8571	0.8939	0.1061	0.0379	7	59
7.0000	0.8788	0.1212	0.0402	8	58
7.5714	0.8636	0.1364	0.0422	9	57
8.0000				10	56
8.0000	0.8333	0.1667	0.0459	11	55
8.0000*				11	54
8.1429	0.8179	0.1821	0.0475	12	53
8.2857	0.8025	0.1975	0.0491	13	52
9.7143	0.7870	0.2130	0.0505	14	51
11.0000	0.7716	0.2284	0.0518	15	50
11.5714	0.7562	0.2438	0.0530	16	49
13.4286	0.7407	0.2593	0.0542	17	48
13.7143	0.7253	0.2747	0.0552	18	47
14.0000	0.7099	0.2901	0.0561	19	46
14.4286	0.6944	0.3056	0.0570	20	45
15.7143	0.6790	0.3210	0.0578	21	44
16.4286*				21	43
17.2857				22	42
17.2857	0.6474	0.3526	0.0592	23	41
18.1429	0.6316	0.3684	0.0599	24	40
20.1429	0.6158	0.3842	0.0604	25	39
20.8571	0.6001	0.3999	0.0609	26	38
21.4286	0.5843	0.4157	0.0613	27	37
22.7143	0.5685	0.4315	0.0617	28	36
24.0000*				28	35
24.2857	0.5522	0.4478	0.0620	29	34
27.8571	0.5360	0.4640	0.0623	30	33
28.0000*				30	32
28.2857	0.5192	0.4808	0.0625	31	31

Stratum 2: SOC=0 = Standard of Care**Product-Limit Survival Estimates**

Week	Survival	Failure	Error	Failed	Left
33.7143	0.5025	0.4975	0.0627	32	30
34.4286*				32	29
35.4286*				32	28
35.8571*				32	27
35.8571*				32	26
35.8571*				32	25
36.0000	0.4824	0.5176	0.0633	33	24