

Supplementary Figures.

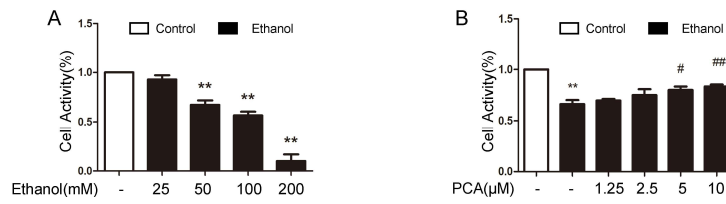


Figure S1. The protective effects of PCA against ethanol-exposed injury in AML12 cells.

(A) AML-12 cell viability with 0, 25, 50, 100, and 200 mM ethanol exposure for 24 h. (B) AML-12 cell viability after 0, 1.25, 2.5, 5, 10, 20 μM PCA treatment for 6 h and 100 mM ethanol for 24 h. **P<0.01 and *P<0.05 compared with the Control group; ##P<0.01 and #P<0.05 compared with the Ethanol group.

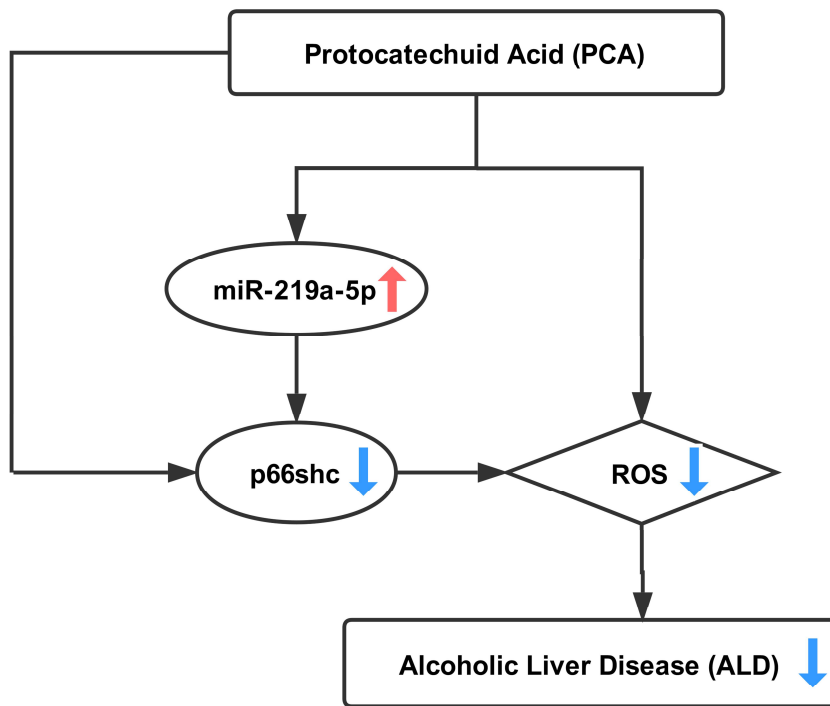


Figure S2. Graphic abstract.

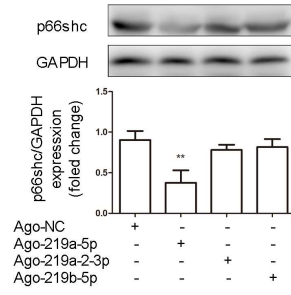


Figure S3. AML-12 cells were transfected with ago-219a-5p, ago-219a-2-3p, ago-219b-5p. Ago-NC was used as a negative control. P66shc protein levels were determined by western blotting (n=3). ** $P < 0.01$ compared with ago-NC.

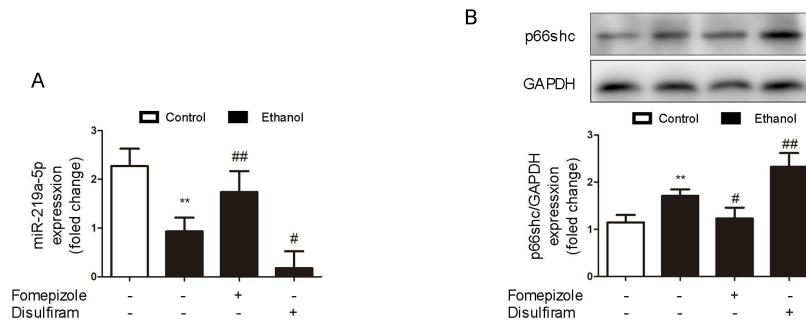


Figure S4. AML-12 cells were treated with fomepizole and disulfiram before ethanol exposure, and miR-219a-5p and p66shc expression were determined. (A) miR-219a-5p expression (n=6). (B) p66shc expression (n=3). **P<0.01 compared with the Control group; ##P<0.01 and #P<0.05 compared with the Ethanol group.