

SourceDataforFigure1A

Prism 8

File Sheet Undo Clipboard Analysis Change Import Draw Write Text Export Print Send LA Help

Q Search

Table format: Grouped

		Group A	Group B	Group C	Group D	Group E	Group F	Group G	Group H	Group I	Group J	Group K	Group L	Group M	Group N
		Donor 3	Donor 2	Donor 1	Donor 4	Title	Title	Title	Title	Title	Title	Title	Title	Title	Title
IL-1beta		Y	Y	Y	Y	Y	Y	Y	Y	Y	Y	Y	Y	Y	Y
IL-6	1	Control	1.00	1.00	1.00	1.000000									
IL-10	2	RBC	1.00	1.00	1.00	6.487088									
TNF	3	iRBC	1.00	1.00	1.00	3.740610									
New Data Table...	4	LPS	9.88	59.45	86.73	46.471830									
Info	5	Title													
New Info...	6	Title													
Results	7	Title													
Transpose of IL-1beta	8	Title													
Ordinary one-way ANOVA of Transpose of IL-1beta	9	Title													
Transpose of IL-6	10	Title													
Friedman test of Transpose of IL-6	11	Title													
Transpose of IL-10	12	Title													
Ordinary one-way ANOVA of Transpose of IL-10	13	Title													
Transpose of TNF	14	Title													
Ordinary one-way ANOVA of Transpose of TNF	15	Title													
New Analysis...	16	Title													
Graphs	17	Title													
IL-1beta	18	Title													
IL-6	19	Title													
IL-10	20	Title													
TNF	21	Title													
New Graph...	22	Title													
Layouts	23	Title													
New Layout...	24	Title													
Family	25	Title													
IL-1beta	26	Title													
Transpose	27	Title													
Ordinary one-way ANOVA	28	Title													
IL-1beta	29	Title													

Row 1, Column RT, Selected: Rows 4, Columns 5

SourceDataforFigure1A

Prism 8

File Sheet Undo Clipboard Analysis Change Import Draw Write Text Export Print Send LA Help

Q Search

Table format: Grouped

		Group A	Group B	Group C	Group D	Group E	Group F	Group G	Group H	Group I	Group J	Group K	Group L
▼ Data Tables		Donor 3	Donor 2	Donor 1	Donor 4	Title	Title	Title	Title	Title	Title	Title	Title
IL-1beta		Y	Y	Y	Y	Y	Y	Y	Y	Y	Y	Y	Y
IL-6	1	Control	1.000000	1.00	1.000000	1.000000							
IL-10	2	RBC	0.833887	1.00	0.698930	5.314219							
TNF	3	iRBC	0.963455	3.08	0.959051	5.442364							
New Data Table...	4	LPS	2328.126000	6850.26	813.036700	991.386800							
▼ Info	5	Title											
New Info...	6	Title											
▼ Results	7	Title											
Transpose of IL-1beta	8	Title											
Ordinary one-way ANOVA of Transpose of IL-1beta	9	Title											
Transpose of IL-6	10	Title											
Friedman test of Transpose of IL-6	11	Title											
Transpose of IL-10	12	Title											
Ordinary one-way ANOVA of Transpose of IL-10	13	Title											
Transpose of TNF	14	Title											
Ordinary one-way ANOVA of Transpose of TNF	15	Title											
New Analysis...	16	Title											
▼ Graphs	17	Title											
IL-1beta	18	Title											
IL-6	19	Title											
IL-10	20	Title											
TNF	21	Title											
New Graph...	22	Title											
▼ Layouts	23	Title											
New Layout...	24	Title											
Family	25	Title											
IL-6	26	Title											
Transpose	27	Title											
Friedman test	28	Title											
IL-6	29	Title											

IL-6

Row 1, Column RT, Selected: Rows 4, Columns 5

SourceDataforFigure1A

Prism 8

File Sheet Undo Clipboard Analysis Change Import Draw Write Text Export Print Send LA Help

Search

Table format: Grouped

		Group A	Group B	Group C	Group D	Group E	Group F	Group G	Group H	Group I	Group J	Group K	Group L	Group M	Group N
		Donor 3	Donor 2	Donor 1	Donor 4	Title	Title	Title	Title	Title	Title	Title	Title	Title	Title
1	Control	1.000000	1.00	1.000000	1.000000	Y	Y	Y	Y	Y	Y	Y	Y	Y	Y
2	RBC	1.727273	1.00	0.821862	2.070681										
3	iRBC	1.409091	1.04	3.082996	2.717278										
4	LPS	80.272730	46.61	35.054660	103.672800										
5	Title														
6	Title														
7	Title														
8	Title														
9	Title														
10	Title														
11	Title														
12	Title														
13	Title														
14	Title														
15	Title														
16	Title														
17	Title														
18	Title														
19	Title														
20	Title														
21	Title														
22	Title														
23	Title														
24	Title														
25	Title														
26	Title														
27	Title														
28	Title														
29	Title														

IL-10

Row 1, Column RT

SourceDataforFigure1A

Prism 8

File Sheet Undo Clipboard Analysis Change Import Draw Write Text Export Print Send LA Help

Q Search

Table format: Grouped

		Group A	Group B	Group C	Group D	Group E	Group F	Group G	Group H	Group I	Group J	Group K	Group L	Group M	G
		Donor 3	Donor 2	Donor 1	Donor 4	Title	Title	Title	Title	Title	Title	Title	Title	Title	
		Y	Y	Y	Y	Y	Y	Y	Y	Y	Y	Y	Y	Y	
1	Control	1.000000	1.000000	1.000000	1.000000										
2	RBC	0.651576	3.017442	0.961616	2.032318										
3	iRBC	3.468068	6.784884	6.992323	2.445283										
4	LPS	789.660500	1455.105000	308.201300	55.278760										
5	Title														
6	Title														
7	Title														
8	Title														
9	Title														
10	Title														
11	Title														
12	Title														
13	Title														
14	Title														
15	Title														
16	Title														
17	Title														
18	Title														
19	Title														
20	Title														
21	Title														
22	Title														
23	Title														
24	Title														
25	Title														
26	Title														
27	Title														
28	Title														
29	Title														

Family

- TNF
 - Transpose
 - Ordinary one-way ANOVA
- TNF

Row 1, Column RT

SourceDataforFigure1A

File Sheet Undo Clipboard Analysis Interpret Change Draw Write Text Export Print Send LA Help

Prism 8

Search ANOVA results Multiple comparisons

▼ Data Tables

- IL-1beta
- IL-6
- IL-10
- TNF
- New Data Table...

▼ Info

- New Info...

▼ Results

- Transpose of IL-1beta
- Ordinary one-way ANOVA of Transpose of IL-1beta**
- Transpose of IL-6
- Friedman test of Transpose of IL-6
- Transpose of IL-10
- Ordinary one-way ANOVA of Transpose of IL-10
- Transpose of TNF
- Ordinary one-way ANOVA of Transpose of TNF
- New Analysis...

▼ Graphs

- IL-1beta
- IL-6
- IL-10
- TNF
- New Graph...

▼ Layouts

- New Layout...

Family

- IL-1beta
- Transpose
- Ordinary one-way ANOVA**

Ordinary one-way ANOVA		ANOVA results				
1	Table Analyzed	Transpose of IL-1beta				
2	Data sets analyzed	A-D				
3						
4	ANOVA summary					
5	F	9.318				
6	P value	0.0019				
7	P value summary	**				
8	Significant diff. among means (P < 0.05)?	Yes				
9	R square	0.6997				
10						
11	Brown-Forsythe test					
12	F (DFn, DFd)	5.225 (3, 12)				
13	P value	0.0154				
14	P value summary	*				
15	Are SDs significantly different (P < 0.05)?	Yes				
16						
17	Bartlett's test					
18	Bartlett's statistic (corrected)					
19	P value					
20	P value summary					
21	Are SDs significantly different (P < 0.05)?					
22						
23	ANOVA table	SS	DF	MS	F (DFn, DFd)	P value
24	Treatment (between columns)	7191	3	2397	F (3, 12) = 9.318	P=0.0019
25	Residual (within columns)	3087	12	257.3		
26	Total	10278	15			
27						
28	Data summary					

Ordinary one-way ANOVA of Transpose of IL-1beta Row 25, Column RT

SourceDataforFigure1A

Prism 8

File Sheet Undo Clipboard Analysis Interpret Change Draw Write Text Export Print Send LA Help

Q Search

▼ Data Tables

- IL-1beta
- IL-6
- IL-10
- TNF
- New Data Table...

▼ Info

- New Info...

▼ Results

- Transpose of IL-1beta
- Ordinary one-way ANOVA of Transpose of IL-1beta
- Transpose of IL-6
- Friedman test of Transpose of IL-6
- Transpose of IL-10
- Ordinary one-way ANOVA of Transpose of IL-10
- Transpose of TNF
- Ordinary one-way ANOVA of Transpose of TNF
- New Analysis...

▼ Graphs

- IL-1beta
- IL-6
- IL-10
- TNF
- New Graph...

▼ Layouts

- New Layout...

Family

- IL-1beta
 - Transpose
 - Ordinary one-way ANOVA

		A	B	C	D	E	F	G	H	I	J	K	L	M
	Transpose	Control	RBC	iRBC	LPS	Title	Title	Title	Title	Title	Title	Title	Title	Title
		Y	Y	Y	Y	Y	Y	Y	Y	Y	Y	Y	Y	Y
1	Donor 3	1.000	1.000	1.000	9.880									
2	Donor 2	1.000	1.000	1.000	59.450									
3	Donor 1	1.000	1.000	1.000	86.730									
4	Donor 4	1.000	6.487	3.741	46.472									
5														
6														
7														
8														
9														
10														
11														
12														
13														
14														
15														
16														
17														
18														
19														
20														
21														
22														
23														
24														
25														
26														
27														
28														
29														

Transpose of IL-1beta

Row 1, Column RT

SourceDataforFigure1A

File Sheet Undo Clipboard Analysis Interpret Change Draw Write Text Export Print Send LA Help

Prism 8

Q Search ANOVA results Multiple comparisons

▼ Data Tables

- IL-1beta
- IL-6
- IL-10
- TNF
- New Data Table...

▼ Info

- New Info...

▼ Results

- Transpose of IL-1beta
- Ordinary one-way ANOVA of Transpose of IL-1beta**
- Transpose of IL-6
- Friedman test of Transpose of IL-6
- Transpose of IL-10
- Ordinary one-way ANOVA of Transpose of IL-10
- Transpose of TNF
- Ordinary one-way ANOVA of Transpose of TNF
- New Analysis...

▼ Graphs

- IL-1beta
- IL-6
- IL-10
- TNF
- New Graph...

▼ Layouts

- New Layout...

Family

- IL-1beta
- Transpose
- Ordinary one-way ANOVA**

Ordinary one-way ANOVA									
Multiple comparisons									
1	Number of families	1							
2	Number of comparisons per family	6							
3	Alpha	0.05							
4									
5	Holm-Sidak's multiple comparisons test	Mean Diff.	Significant?	Summary	Adjusted P Value				
6	Control vs. RBC	-1.372	No	ns	0.9992			A-B	
7	Control vs. iRBC	-0.6852	No	ns	0.9992			A-C	
8	Control vs. LPS	-49.63	Yes	**	0.0054			A-D	
9	RBC vs. iRBC	0.6866	No	ns	0.9992			B-C	
10	RBC vs. LPS	-48.26	Yes	**	0.0054			B-D	
11	iRBC vs. LPS	-48.95	Yes	**	0.0054			C-D	
12									
13	Test details	Mean 1	Mean 2	Mean Diff.	SE of diff.	n1	n2	t	DF
14	Control vs. RBC	1.000	2.372	-1.372	11.34	4	4	0.1210	12
15	Control vs. iRBC	1.000	1.685	-0.6852	11.34	4	4	0.06041	12
16	Control vs. LPS	1.000	50.63	-49.63	11.34	4	4	4.376	12
17	RBC vs. iRBC	2.372	1.685	0.6866	11.34	4	4	0.06054	12
18	RBC vs. LPS	2.372	50.63	-48.26	11.34	4	4	4.255	12
19	iRBC vs. LPS	1.685	50.63	-48.95	11.34	4	4	4.316	12
20									
21									
22									
23									
24									
25									
26									
27									
28									

Ordinary one-way ANOVA of Transpose of IL-1beta Row 25, Column RT

SourceDataforFigure1A

Prism 8

File Sheet Undo Clipboard Analysis Interpret Change Draw Write Text Export Print Send LA Help

12 Helvetica

Q Search

▼ Data Tables

- IL-1beta
- IL-6**
- IL-10
- TNF
- New Data Table...

▼ Info

- New Info...

▼ Results

- Transpose of IL-1beta
- Ordinary one-way ANOVA of Transpose of IL-1beta
- Transpose of IL-6**
- Friedman test of Transpose of IL-6
- Transpose of IL-10
- Ordinary one-way ANOVA of Transpose of IL-10
- Transpose of TNF
- Ordinary one-way ANOVA of Transpose of TNF
- New Analysis...

▼ Graphs

- IL-1beta
- IL-6
- IL-10
- TNF
- New Graph...

▼ Layouts

- New Layout...

Family

- IL-6
 - Transpose
 - Friedman test

Transpose		A	B	C	D	E	F	G	H	I	J	K	L	M
		Control	RBC	iRBC	LPS	Title	Title	Title	Title	Title	Title	Title	Title	Title
1	Donor 3	1.000	0.834	0.963	2328.126	Y	Y	Y	Y	Y	Y	Y	Y	Y
2	Donor 2	1.000	1.000	3.080	6850.260									
3	Donor 1	1.000	0.699	0.959	813.037									
4	Donor 4	1.000	5.314	5.442	991.387									
5														
6														
7														
8														
9														
10														
11														
12														
13														
14														
15														
16														
17														
18														
19														
20														
21														
22														
23														
24														
25														
26														
27														
28														
29														

Transpose of IL-6

Row 1, A: Control

SourceDataforFigure1A

File Sheet Undo Clipboard Analysis Interpret Change Draw Write Text Export Print Send LA Help

Prism 8

Q Search ANOVA results Multiple comparisons

▼ Data Tables

- IL-1beta
- IL-6
- IL-10
- TNF
- New Data Table...

▼ Info

- New Info...

▼ Results

- Transpose of IL-1beta
- Ordinary one-way ANOVA of Transpose of IL-1beta
- Transpose of IL-6
- Friedman test of Transpose of IL-6**
- Transpose of IL-10
- Ordinary one-way ANOVA of Transpose of IL-10
- Transpose of TNF
- Ordinary one-way ANOVA of Transpose of TNF
- New Analysis...

▼ Graphs

- IL-1beta
- IL-6
- IL-10
- TNF
- New Graph...

▼ Layouts

- New Layout...

Family

- IL-6
 - Transpose
 - Friedman test**

Friedman test								
Multiple comparisons								
1	Number of families	1						
2	Number of comparisons per family	6						
3	Alpha	0.05						
4								
5	Dunn's multiple comparisons test	Rank sum diff.	Significant?	Summary	Adjusted P Value			
6	Control vs. RBC	3.000	No	ns	>0.9999	A-B		
7	Control vs. iRBC	-1.500	No	ns	>0.9999	A-C		
8	Control vs. LPS	-7.500	No	ns	0.2399	A-D		
9	RBC vs. iRBC	-4.500	No	ns	>0.9999	B-C		
10	RBC vs. LPS	-10.50	Yes	*	0.0242	B-D		
11	iRBC vs. LPS	-6.000	No	ns	0.6021	C-D		
12								
13	Test details	Rank sum 1	Rank sum 2	Rank sum diff.	n1	n2	Z	
14	Control vs. RBC	8.500	5.500	3.000	4	4	0.8216	
15	Control vs. iRBC	8.500	10.00	-1.500	4	4	0.4108	
16	Control vs. LPS	8.500	16.00	-7.500	4	4	2.054	
17	RBC vs. iRBC	5.500	10.00	-4.500	4	4	1.232	
18	RBC vs. LPS	5.500	16.00	-10.50	4	4	2.876	
19	iRBC vs. LPS	10.00	16.00	-6.000	4	4	1.643	
20								
21								
22								
23								
24								
25								
26								
27								
28								

Friedman test of Transpose of IL-6 Row 1, Column A

SourceDataforFigure1A

File Sheet Undo Clipboard Analysis Interpret Change Draw Write Text Export Print Send LA Help

Prism 8

Q Search ANOVA results Multiple comparisons

▼ Data Tables

- IL-1beta
- IL-6
- IL-10
- TNF
- New Data Table...

▼ Info

- New Info...

▼ Results

- Transpose of IL-1beta
- Ordinary one-way ANOVA of Transpose of IL-1beta
- Transpose of IL-6
- Friedman test of Transpose of IL-6**
- Transpose of IL-10
- Ordinary one-way ANOVA of Transpose of IL-10
- Transpose of TNF
- Ordinary one-way ANOVA of Transpose of TNF
- New Analysis...

▼ Graphs

- IL-1beta
- IL-6
- IL-10
- TNF
- New Graph...

▼ Layouts

- New Layout...

Family

- IL-6
 - Transpose
 - Friedman test**

Friedman test ANOVA results									
1	Table Analyzed	Transpose of IL-6							
2									
3	Friedman test								
4	P value	0.0101							
5	Exact or approximate P value?	Exact							
6	P value summary	*							
7	Are means signif. different? (P < 0.05)	Yes							
8	Number of groups	4							
9	Friedman statistic	9.000							
10									
11	Data summary								
12	Number of treatments (columns)	4							
13	Number of subjects (rows)	4							
14									
15									
16									
17									
18									
19									
20									
21									
22									
23									
24									
25									
26									
27									
28									

Friedman test of Transpose of IL-6 Row 1, Column A

SourceDataforFigure1A

File Sheet Undo Clipboard Analysis Interpret Change Draw Write Text Export Print Send LA Help

Prism 8

Search ANOVA results Multiple comparisons

▼ Data Tables

- IL-1beta
- IL-6
- IL-10**
- TNF
- New Data Table...

▼ Info

- New Info...

▼ Results

- Transpose of IL-1beta
- Ordinary one-way ANOVA of Transpose of IL-1beta
- Transpose of IL-6
- Friedman test of Transpose of IL-6
- Transpose of IL-10**
- Ordinary one-way ANOVA of Transpose of IL-10**
- Transpose of TNF
- Ordinary one-way ANOVA of Transpose of TNF
- New Analysis...

▼ Graphs

- IL-1beta
- IL-6
- IL-10
- TNF
- New Graph...

▼ Layouts

- New Layout...

Family

- IL-10**
 - Transpose
 - Ordinary one-way ANOVA**

Ordinary one-way ANOVA		ANOVA results				
1	Table Analyzed	Transpose of IL-10				
2	Data sets analyzed	A-D				
3						
4	ANOVA summary					
5	F	17.09				
6	P value	0.0001				
7	P value summary	***				
8	Significant diff. among means (P < 0.05)?	Yes				
9	R square	0.8103				
10						
11	Brown-Forsythe test					
12	F (DFn, DFd)	20.17 (3, 12)				
13	P value	<0.0001				
14	P value summary	****				
15	Are SDs significantly different (P < 0.05)?	Yes				
16						
17	Bartlett's test					
18	Bartlett's statistic (corrected)					
19	P value					
20	P value summary					
21	Are SDs significantly different (P < 0.05)?					
22						
23	ANOVA table	SS	DF	MS	F (DFn, DFd)	P value
24	Treatment (between columns)	12644	3	4215	F (3, 12) = 17.09	P=0.0001
25	Residual (within columns)	2960	12	246.7		
26	Total	15603	15			
27						
28	Data summary					

Ordinary one-way ANOVA of Transpose of IL-10 Row 1, Column A

SourceDataforFigure1A

File Sheet Undo Clipboard Analysis Interpret Change Draw Write Text Export Print Send LA Help

Prism 8

Search ANOVA results Multiple comparisons

▼ Data Tables

- IL-1beta
- IL-6
- IL-10**
- TNF
- New Data Table...

▼ Info

- New Info...

▼ Results

- Transpose of IL-1beta
- Ordinary one-way ANOVA of Transpose of IL-1beta
- Transpose of IL-6
- Friedman test of Transpose of IL-6
- Transpose of IL-10**
- Ordinary one-way ANOVA of Transpose of IL-10
- Transpose of TNF
- Ordinary one-way ANOVA of Transpose of TNF
- New Analysis...

▼ Graphs

- IL-1beta
- IL-6
- IL-10
- TNF
- New Graph...

▼ Layouts

- New Layout...

Family

- IL-10
- Transpose
- Ordinary one-way ANOVA**

Ordinary one-way ANOVA		Multiple comparisons								
1	Number of families	1								
2	Number of comparisons per family	6								
3	Alpha	0.05								
4										
5	Tukey's multiple comparisons test	Mean Diff.	95.00% CI of diff.	Significant?	Summary	Adjusted P Value				
6	Control vs. RBC	-0.4050	-33.38 to 32.57	No	ns	>0.9999			A-B	
7	Control vs. iRBC	-1.062	-34.03 to 31.91	No	ns	0.9997			A-C	
8	Control vs. LPS	-65.40	-98.37 to -32.43	Yes	***	0.0004			A-D	
9	RBC vs. iRBC	-0.6574	-33.63 to 32.31	No	ns	>0.9999			B-C	
10	RBC vs. LPS	-65.00	-97.97 to -32.03	Yes	***	0.0004			B-D	
11	iRBC vs. LPS	-64.34	-97.31 to -31.37	Yes	***	0.0004			C-D	
12										
13	Test details	Mean 1	Mean 2	Mean Diff.	SE of diff.	n1	n2	q	DF	
14	Control vs. RBC	1.000	1.405	-0.4050	11.11	4	4	0.05157	12	
15	Control vs. iRBC	1.000	2.062	-1.062	11.11	4	4	0.1353	12	
16	Control vs. LPS	1.000	66.40	-65.40	11.11	4	4	8.329	12	
17	RBC vs. iRBC	1.405	2.062	-0.6574	11.11	4	4	0.08372	12	
18	RBC vs. LPS	1.405	66.40	-65.00	11.11	4	4	8.277	12	
19	iRBC vs. LPS	2.062	66.40	-64.34	11.11	4	4	8.193	12	
20										
21										
22										
23										
24										
25										
26										
27										
28										

Ordinary one-way ANOVA of Transpose of IL-10 Row 1, Column A

SourceDataforFigure1A

Prism 8

File Sheet Undo Clipboard Analysis Interpret Change Draw Write Text Export Print Send LA Help

12 Helvetica

Search

▼ Data Tables

- IL-1beta
- IL-6
- IL-10
- TNF
- New Data Table...

▼ Info

- New Info...

▼ Results

- Transpose of IL-1beta
- Ordinary one-way ANOVA of Transpose of IL-1beta
- Transpose of IL-6
- Friedman test of Transpose of IL-6
- Transpose of IL-10
- Ordinary one-way ANOVA of Transpose of IL-10
- Transpose of TNF**
- Ordinary one-way ANOVA of Transpose of TNF
- New Analysis...

▼ Graphs

- IL-1beta
- IL-6
- IL-10
- TNF
- New Graph...

▼ Layouts

- New Layout...

Family

- TNF
 - Transpose
 - Ordinary one-way ANOVA

Transpose		A	B	C	D	E	F	G	H	I	J	K	L	M
		Control	RBC	iRBC	LPS	Title	Title	Title	Title	Title	Title	Title	Title	Title
1	Donor 3	1.000	0.652	3.468	789.661	Y	Y	Y	Y	Y	Y	Y	Y	Y
2	Donor 2	1.000	3.017	6.785	1455.105									
3	Donor 1	1.000	0.962	6.992	308.201									
4	Donor 4	1.000	2.032	2.445	55.279									
5														
6														
7														
8														
9														
10														
11														
12														
13														
14														
15														
16														
17														
18														
19														
20														
21														
22														
23														
24														
25														
26														
27														
28														
29														

Transpose of TNF

Row 1, A: Control

SourceDataforFigure1A

Prism 8

File Sheet Undo Clipboard Analysis Interpret Change Draw Write Text Export Print Send LA Help

12 Helvetica

Search

▼ Data Tables

- IL-1beta
- IL-6
- IL-10**
- TNF
- New Data Table...

▼ Info

- New Info...

▼ Results

- Transpose of IL-1beta
- Ordinary one-way ANOVA of Transpose of IL-1beta
- Transpose of IL-6
- Friedman test of Transpose of IL-6
- Transpose of IL-10**
- Ordinary one-way ANOVA of Transpose of IL-10
- Transpose of TNF
- Ordinary one-way ANOVA of Transpose of TNF
- New Analysis...

▼ Graphs

- IL-1beta
- IL-6
- IL-10
- TNF
- New Graph...

▼ Layouts

- New Layout...

Family

- IL-10
 - Transpose
 - Ordinary one-way ANOVA

Transpose		A	B	C	D	E	F	G	H	I	J	K	L	M
		Control	RBC	iRBC	LPS	Title	Title	Title	Title	Title	Title	Title	Title	Title
1	Donor 3	1.000	1.727	1.409	80.273	Y	Y	Y	Y	Y	Y	Y	Y	Y
2	Donor 2	1.000	1.000	1.040	46.610									
3	Donor 1	1.000	0.822	3.083	35.055									
4	Donor 4	1.000	2.071	2.717	103.673									
5														
6														
7														
8														
9														
10														
11														
12														
13														
14														
15														
16														
17														
18														
19														
20														
21														
22														
23														
24														
25														
26														
27														
28														
29														

Transpose of IL-10

Row 1, A: Control

SourceDataforFigure1A

File Sheet Undo Clipboard Analysis Interpret Change Draw Write Text Export Print Send LA Help

Prism 8

Search ANOVA results Multiple comparisons

▼ Data Tables

- IL-1beta
- IL-6
- IL-10
- TNF
- New Data Table...

▼ Info

- New Info...

▼ Results

- Transpose of IL-1beta
- Ordinary one-way ANOVA of Transpose of IL-1beta
- Transpose of IL-6
- Friedman test of Transpose of IL-6
- Transpose of IL-10
- Ordinary one-way ANOVA of Transpose of IL-10
- Transpose of TNF
- Ordinary one-way ANOVA of Transpose of TNF**
- New Analysis...

▼ Graphs

- IL-1beta
- IL-6
- IL-10
- TNF
- New Graph...

▼ Layouts

- New Layout...

Family

- TNF
- Transpose
- Ordinary one-way ANOVA**

Ordinary one-way ANOVA		Multiple comparisons							
1	Number of families	1							
2	Number of comparisons per family	6							
3	Alpha	0.05							
4									
5	Tukey's multiple comparisons test	Mean Diff.	95.00% CI of diff.	Significant?	Summary	Adjusted P Value			
6	Control vs. RBC	-0.6657	-647.2 to 645.9	No	ns	>0.9999		A-B	
7	Control vs. iRBC	-3.923	-650.5 to 642.6	No	ns	>0.9999		A-C	
8	Control vs. LPS	-651.1	-1298 to -4.509	Yes	*	0.0482		A-D	
9	RBC vs. iRBC	-3.257	-649.8 to 643.3	No	ns	>0.9999		B-C	
10	RBC vs. LPS	-650.4	-1297 to -3.844	Yes	*	0.0485		B-D	
11	iRBC vs. LPS	-647.1	-1294 to -0.5867	Yes	*	0.0498		C-D	
12									
13	Test details	Mean 1	Mean 2	Mean Diff.	SE of diff.	n1	n2	q	DF
14	Control vs. RBC	1.000	1.666	-0.6657	217.8	4	4	0.004323	12
15	Control vs. iRBC	1.000	4.923	-3.923	217.8	4	4	0.02547	12
16	Control vs. LPS	1.000	652.1	-651.1	217.8	4	4	4.228	12
17	RBC vs. iRBC	1.666	4.923	-3.257	217.8	4	4	0.02115	12
18	RBC vs. LPS	1.666	652.1	-650.4	217.8	4	4	4.224	12
19	iRBC vs. LPS	4.923	652.1	-647.1	217.8	4	4	4.202	12
20									
21									
22									
23									
24									
25									
26									
27									
28									

Ordinary one-way ANOVA of Transpose of TNF Row 1, Column A

SourceDataforFigure1A

File Sheet Undo Clipboard Analysis Interpret Change Draw Write Text Export Print Send LA Help

Prism 8

Search ANOVA results Multiple comparisons

▼ Data Tables

- IL-1beta
- IL-6
- IL-10
- TNF
- New Data Table...

▼ Info

- New Info...

▼ Results

- Transpose of IL-1beta
- Ordinary one-way ANOVA of Transpose of IL-1beta
- Transpose of IL-6
- Friedman test of Transpose of IL-6
- Transpose of IL-10
- Ordinary one-way ANOVA of Transpose of IL-10
- Transpose of TNF
- Ordinary one-way ANOVA of Transpose of TNF**
- New Analysis...

▼ Graphs

- IL-1beta
- IL-6
- IL-10
- TNF
- New Graph...

▼ Layouts

- New Layout...

Family

- TNF
- Transpose
- Ordinary one-way ANOVA**

Ordinary one-way ANOVA		ANOVA results				
1	Table Analyzed	Transpose of TNF				
2	Data sets analyzed	A-D				
3						
4	ANOVA summary					
5	F	4.448				
6	P value	0.0254				
7	P value summary	*				
8	Significant diff. among means (P < 0.05)?	Yes				
9	R square	0.5265				
10						
11	Brown-Forsythe test					
12	F (DFn, DFd)	8.934 (3, 12)				
13	P value	0.0022				
14	P value summary	**				
15	Are SDs significantly different (P < 0.05)?	Yes				
16						
17	Bartlett's test					
18	Bartlett's statistic (corrected)					
19	P value					
20	P value summary					
21	Are SDs significantly different (P < 0.05)?					
22						
23	ANOVA table	SS	DF	MS	F (DFn, DFd)	P value
24	Treatment (between columns)	1265710	3	421903	F (3, 12) = 4.448	P=0.0254
25	Residual (within columns)	1138221	12	94852		
26	Total	2403932	15			
27						
28	Data summary					

Ordinary one-way ANOVA of Transpose of TNF Row 1, Column A

SourceDataforFigure1B

File Sheet Undo Clipboard Analysis Change Import Draw Write Text Export Print Send LA Help

Prism 8

Restrict: Sheet is Any

Table format: Grouped

		Group A	Group B	Group C	Group D	Group E	Group F	Group G	Group H	Group I	Group J	Group K	Group L
		Donor 2	Donor 1	Donor 3	Donor 4	Donor 5	Donor 6	Title	Title	Title	Title	Title	Title
1	Control	Y	Y	Y	Y	Y	Y	Y	Y	Y	Y	Y	Y
2	RBCL	1.00	1.00	1.00	1.00	1.00	1.00						
3	iRBCL	1.00	1.00	1.00	1.00	1.00	1.00						
4	LPS	60.03	35.81	31.82	20.48	19.94	6.03						
5	Title												
6	Title												
7	Title												
8	Title												
9	Title												
10	Title												
11	Title												
12	Title												
13	Title												
14	Title												
15	Title												
16	Title												
17	Title												
18	Title												
19	Title												
20	Title												
21	Title												
22	Title												
23	Title												
24	Title												
25	Title												
26	Title												
27	Title												
28	Title												
29	Title												

Family

- IL-1beta
 - Transpose
 - Ordinary one-way ANOVA
- IL-1beta

IL-1beta

Row 1, Column RT

SourceDataforFigure1B

File Sheet Undo Clipboard Analysis Change Import Draw Write Text Export Print Send LA Help

Prism 8

Restrict: Sheet is Any

Table format: Grouped

		Group A	Group B	Group C	Group D	Group E	Group F	Group G	Group H	Group I	Group J	Group K	Group L
		Donor 2	Donor 1	Donor 3	Donor 4	Donor 5	Donor 6	Title	Title	Title	Title	Title	Title
1	Control	1.000000	1.000000	1.00	1.00	1.00	1.00	Y	Y	Y	Y	Y	Y
2	RBCL	0.756972	0.014514	5.51	19.45	1.00	1.00						
3	iRBCL	1.000000	0.014514	1.00	12.28	5.64	9.38						
4	LPS	6109.482000	80.531200	5448.73	10896.21	3265.93	5290.13						
5	Title												
6	Title												
7	Title												
8	Title												
9	Title												
10	Title												
11	Title												
12	Title												
13	Title												
14	Title												
15	Title												
16	Title												
17	Title												
18	Title												
19	Title												
20	Title												
21	Title												
22	Title												
23	Title												
24	Title												
25	Title												
26	Title												
27	Title												
28	Title												
29	Title												

Family

- IL-6
 - Transpose
 - Ordinary one-way ANOVA
- IL-6

Row 1, Column RT

SourceDataforFigure1B

Prism 8

File Sheet Undo Clipboard Analysis Change Import Draw Write Text Export Print Send LA Help

Restrict: Sheet is Any

Table format: Grouped

		Group A	Group B	Group C	Group D	Group E	Group F	Group G	Group H	Group I	Group J	Group K	Group L
		Donor 2	Donor 1	Donor 3	Donor 4	Donor 5	Donor 6	Title	Title	Title	Title	Title	Title
1	Control	1.000000	1.000000	1.00	1.00	1.00	1.00	Y	Y	Y	Y	Y	Y
2	RBCL	0.864516	0.271739	1.00	2.51	1.00	1.00						
3	iRBCL	1.135484	0.739130	1.00	2.41	1.00	2.08						
4	LPS	19.187100	34.331520	62.09	35.26	4.92	13.71						
5	Title												
6	Title												
7	Title												
8	Title												
9	Title												
10	Title												
11	Title												
12	Title												
13	Title												
14	Title												
15	Title												
16	Title												
17	Title												
18	Title												
19	Title												
20	Title												
21	Title												
22	Title												
23	Title												
24	Title												
25	Title												
26	Title												
27	Title												
28	Title												
29	Title												

Family

- IL-10
 - Transpose
 - Ordinary one-way ANOVA
- IL-10

IL-10

Row 1, Column RT

SourceDataforFigure1B

File Sheet Undo Clipboard Analysis Change Import Draw Write Text Export Print Send LA Help

Prism8

Restrict: Sheet is Any

Table format: Grouped

		Group A	Group B	Group C	Group D	Group E	Group F	Group G	Group H	Group I	Group J	Group K	Group L
		Donor 2	Donor 1	Donor 3	Donor 4	Donor 5	Donor 6	Title	Title	Title	Title	Title	Title
1	Control	1.000000	1.000000	1.000000	1.000000	1.00	1.00	Y	Y	Y	Y	Y	Y
2	RBCL	1.954295	0.011088	1.646809	3.805310	1.00	2.99						
3	iRBCL	2.092987	0.662379	3.910638	3.094395	10.43	10.30						
4	LPS	998.412900	14.629120	578.387200	888.811200	667.56	1372.37						
5	Title												
6	Title												
7	Title												
8	Title												
9	Title												
10	Title												
11	Title												
12	Title												
13	Title												
14	Title												
15	Title												
16	Title												
17	Title												
18	Title												
19	Title												
20	Title												
21	Title												
22	Title												
23	Title												
24	Title												
25	Title												
26	Title												
27	Title												
28	Title												
29	Title												

Family

- TNF
 - Transpose
 - Ordinary one-way ANOVA
- TNF

Row 1, Column RT

SourceDataforFigure1B

File Sheet Undo Clipboard Analysis Interpret Change Draw Write Text Export Print Send LA Help

Prism8

Restrict: Sheet is Any

▼ Data Tables

- IL-1beta
- IL-6
- IL-10
- TNF
- New Data Table...

▼ Info

- Project info 1
- Project info 1
- New Info...

▼ Results

- Transpose of IL-1beta
- Ordinary one-way ANOVA of Transpose of IL-1beta
- Transpose of IL-6
- Ordinary one-way ANOVA of Transpose of IL-6
- Transpose of IL-10
- Ordinary one-way ANOVA of Transpose of IL-10

Family

- IL-1beta
- Transpose
- Ordinary one-way ANOVA

Transpose		A	B	C	D	E	F	G	H	I	J	K	L
		Control	RBCL	IRBCL	LPS	Title	Title	Title	Title	Title	Title	Title	Title
		Y	Y	Y	Y	Y	Y	Y	Y	Y	Y	Y	Y
1	Donor 2	1.000	1.000	1.000	60.030								
2	Donor 1	1.000	1.000	1.000	35.810								
3	Donor 3	1.000	1.000	1.000	31.820								
4	Donor 4	1.000	1.000	1.000	20.480								
5	Donor 5	1.000	1.000	1.000	19.940								
6	Donor 6	1.000	1.000	1.000	6.030								
7													
8													
9													
10													
11													
12													
13													
14													
15													
16													
17													
18													
19													
20													
21													
22													
23													
24													
25													
26													
27													
28													
29													

Transpose of IL-1beta

Row 1, Column RT

SourceDataforFigure1B

File Sheet Undo Clipboard Analysis Interpret Change Draw Write Text Export Print Send LA Help

Prism 8

ANOVA results Multiple comparisons

Restrict: Sheet is Any

Data Tables

- IL-1beta
- IL-6
- IL-10
- TNF
- New Data Table...

Info

- Project info 1
- Project info 1
- New Info...

Results

- Transpose of IL-1beta
- Ordinary one-way ANOVA of Transpose of IL-1beta**
- Transpose of IL-6
- Ordinary one-way ANOVA of Transpose of IL-6
- Transpose of IL-10
- Ordinary one-way ANOVA of Transpose of IL-10

Family

- IL-1beta
- Transpose
- Ordinary one-way ANOVA**

Ordinary one-way ANOVA		ANOVA results				
1	Table Analyzed	Transpose of IL-1beta				
2	Data sets analyzed	A-D				
3						
4	ANOVA summary					
5	F	13.86				
6	P value	<0.0001				
7	P value summary	****				
8	Significant diff. among means (P < 0.05)?	Yes				
9	R square	0.6752				
10						
11	Brown-Forsythe test					
12	F (DFn, DFd)	8.460 (3, 20)				
13	P value	0.0008				
14	P value summary	***				
15	Are SDs significantly different (P < 0.05)?	Yes				
16						
17	Bartlett's test					
18	Bartlett's statistic (corrected)					
19	P value					
20	P value summary					
21	Are SDs significantly different (P < 0.05)?					
22						
23	ANOVA table	SS	DF	MS	F (DFn, DFd)	P value
24	Treatment (between columns)	3533	3	1178	F (3, 20) = 13.86	P<0.0001
25	Residual (within columns)	1699	20	84.97		
26	Total	5232	23			
27						
28	Data summary					

Ordinary one-way ANOVA of Transpose of IL- Row 1, Column A

SourceDataforFigure1B

Prism 8

File Sheet Undo Clipboard Analysis Interpret Change Draw Write Text Export Print Send LA Help

Restrict: Sheet is Any

▼ Data Tables

- IL-1beta
- IL-6
- IL-10
- TNF
- New Data Table...

▼ Info

- Project info 1
- Project info 1
- New Info...

▼ Results

- Transpose of IL-1beta
- Ordinary one-way ANOVA of Transpose of IL-1beta
- Transpose of IL-6**
- Ordinary one-way ANOVA of Transpose of IL-6
- Transpose of IL-10
- Ordinary one-way ANOVA of Transpose of IL-10

Family

- IL-6
 - Transpose
 - Ordinary one-way ANOVA

Transpose		A	B	C	D	E	F	G	H	I	J	K	L
		Control	RBCL	IRBCL	LPS	Title	Title	Title	Title	Title	Title	Title	Title
		Y	Y	Y	Y	Y	Y	Y	Y	Y	Y	Y	Y
1	Donor 2	1.000	0.757	1.000	6109.482								
2	Donor 1	1.000	0.015	0.015	80.531								
3	Donor 3	1.000	5.510	1.000	5448.730								
4	Donor 4	1.000	19.450	12.280	10896.210								
5	Donor 5	1.000	1.000	5.640	3265.930								
6	Donor 6	1.000	1.000	9.380	5290.130								
7													
8													
9													
10													
11													
12													
13													
14													
15													
16													
17													
18													
19													
20													
21													
22													
23													
24													
25													
26													
27													
28													
29													

Transpose of IL-6

Row 1, A: Control

SourceDataforFigure1B

File Sheet Undo Clipboard Analysis Interpret Change Draw Write Text Export Print Send LA Help

Prism 8

ANOVA results Multiple comparisons

Restrict: Sheet is Any

Data Tables

- IL-1beta
- IL-6
- IL-10
- TNF
- New Data Table...

Info

- Project info 1
- Project info 1
- New Info...

Results

- Transpose of IL-1beta
- Ordinary one-way ANOVA of Transpose of IL-1beta
- Transpose of IL-6
- Ordinary one-way ANOVA of Transpose of IL-6**
- Transpose of IL-10
- Ordinary one-way ANOVA of Transpose of IL-10

Family

- IL-6
- Transpose
- Ordinary one-way ANOVA**

Ordinary one-way ANOVA		ANOVA results				
1	Table Analyzed	Transpose of IL-6				
2	Data sets analyzed	A-D				
3						
4	ANOVA summary					
5	F	12.71				
6	P value	<0.0001				
7	P value summary	****				
8	Significant diff. among means (P < 0.05)?	Yes				
9	R square	0.6559				
10						
11	Brown-Forsythe test					
12	F (DFn, DFd)	5.010 (3, 20)				
13	P value	0.0094				
14	P value summary	**				
15	Are SDs significantly different (P < 0.05)?	Yes				
16						
17	Bartlett's test					
18	Bartlett's statistic (corrected)					
19	P value					
20	P value summary					
21	Are SDs significantly different (P < 0.05)?					
22						
23	ANOVA table	SS	DF	MS	F (DFn, DFd)	P value
24	Treatment (between columns)	120668153	3	40222718	F (3, 20) = 12.71	P<0.0001
25	Residual (within columns)	63291976	20	3164599		
26	Total	183960129	23			
27						
28	Data summary					

Ordinary one-way ANOVA of Transpose of IL-6 Row 1, Column A

SourceDataforFigure1B

File Sheet Undo Clipboard Analysis Interpret Change Draw Write Text Export Print Send LA Help

Prism 8

ANOVA results Multiple comparisons

Restrict: Sheet is Any

Data Tables

- IL-1beta
- IL-6
- IL-10
- TNF
- New Data Table...

Info

- Project info 1
- Project info 1
- New Info...

Results

- Transpose of IL-1beta
- Ordinary one-way ANOVA of Transpose of IL-1beta
- Transpose of IL-6
- Ordinary one-way ANOVA of Transpose of IL-6**
- Transpose of IL-10
- Ordinary one-way ANOVA of Transpose of IL-10

Family

- IL-6
- Transpose
- Ordinary one-way ANOVA**

Ordinary one-way ANOVA		Multiple comparisons						
1	Number of families	1						
2	Number of comparisons per family	6						
3	Alpha	0.05						
4								
5	Tukey's multiple comparisons test	Mean Diff.	95.00% CI of diff.	Significant?	Summary	Adjusted P Value		
6	Control vs. RBCL	-3.622	-2878 to 2871	No	ns	>0.9999	A-B	
7	Control vs. iRBCL	-3.886	-2879 to 2871	No	ns	>0.9999	A-C	
8	Control vs. LPS	-5181	-8056 to -2306	Yes	***	0.0003	A-D	
9	RBCL vs. iRBCL	-0.2638	-2875 to 2874	No	ns	>0.9999	B-C	
10	RBCL vs. LPS	-5177	-8052 to -2303	Yes	***	0.0003	B-D	
11	iRBCL vs. LPS	-5177	-8052 to -2302	Yes	***	0.0003	C-D	
12								
13	Test details	Mean 1	Mean 2	Mean Diff.	SE of diff.	n1	n2	q
14	Control vs. RBCL	1.000	4.622	-3.622	1027	6	6	0.004987
15	Control vs. iRBCL	1.000	4.886	-3.886	1027	6	6	0.005350
16	Control vs. LPS	1.000	5182	-5181	1027	6	6	7.134
17	RBCL vs. iRBCL	4.622	4.886	-0.2638	1027	6	6	0.0003633
18	RBCL vs. LPS	4.622	5182	-5177	1027	6	6	7.129
19	iRBCL vs. LPS	4.886	5182	-5177	1027	6	6	7.128
20								
21								
22								
23								
24								
25								
26								
27								
28								

Ordinary one-way ANOVA of Transpose of IL-6 Row 1, Column A

SourceDataforFigure1B

File Sheet Undo Clipboard Analysis Interpret Change Draw Write Text Export Print Send LA Help

Prism 8

Restrict: Sheet is Any

ANOVA results Multiple comparisons

▼ Data Tables

- IL-1beta
- IL-6
- IL-10
- TNF
- New Data Table...

▼ Info

- Project info 1
- Project info 1
- New Info...

▼ Results

- Transpose of IL-1beta
- Ordinary one-way ANOVA of Transpose of IL-1beta**
- Transpose of IL-6
- Ordinary one-way ANOVA of Transpose of IL-6
- Transpose of IL-10
- Ordinary one-way ANOVA of Transpose of IL-10

Family

- IL-1beta
- Transpose
- Ordinary one-way ANOVA**

Ordinary one-way ANOVA		Multiple comparisons											
1	Number of families	1											
2	Number of comparisons per family	6											
3	Alpha	0.05											
4													
5	Tukey's multiple comparisons test	Mean Diff.	95.00% CI of diff.	Significant?	Summary	Adjusted P Value							
6	Control vs. RBCL	0.000	-14.90 to 14.90	No	ns	>0.9999							
7	Control vs. iRBCL	0.000	-14.90 to 14.90	No	ns	>0.9999							
8	Control vs. LPS	-28.02	-42.91 to -13.12	Yes	***	0.0002							
9	RBCL vs. iRBCL	0.000	-14.90 to 14.90	No	ns	>0.9999							
10	RBCL vs. LPS	-28.02	-42.91 to -13.12	Yes	***	0.0002							
11	iRBCL vs. LPS	-28.02	-42.91 to -13.12	Yes	***	0.0002							
12													
13	Test details	Mean 1	Mean 2	Mean Diff.	SE of diff.	n1	n2	q	DF				
14	Control vs. RBCL	1.000	1.000	0.000	5.322	6	6	0.000	20				
15	Control vs. iRBCL	1.000	1.000	0.000	5.322	6	6	0.000	20				
16	Control vs. LPS	1.000	29.02	-28.02	5.322	6	6	7.445	20				
17	RBCL vs. iRBCL	1.000	1.000	0.000	5.322	6	6	0.000	20				
18	RBCL vs. LPS	1.000	29.02	-28.02	5.322	6	6	7.445	20				
19	iRBCL vs. LPS	1.000	29.02	-28.02	5.322	6	6	7.445	20				
20													
21													
22													
23													
24													
25													
26													
27													
28													

Ordinary one-way ANOVA of Transpose of IL-1beta Row 1, Column A

SourceDataforFigure1B

Prism 8

File Sheet Undo Clipboard Analysis Interpret Change Draw Write Text Export Print Send LA Help

Restrict: Sheet is Any

▼ Data Tables

- IL-1beta
- IL-6
- IL-10**
- TNF
- New Data Table...

▼ Info

- Project info 1
- Project info 1
- New Info...

▼ Results

- Transpose of IL-1beta
- Ordinary one-way ANOVA of Transpose of IL-1beta
- Transpose of IL-6
- Ordinary one-way ANOVA of Transpose of IL-6
- Transpose of IL-10**
- Ordinary one-way ANOVA of Transpose of IL-10

Family

- IL-10**
 - Transpose**
 - Ordinary one-way ANOVA

Transpose		A	B	C	D	E	F	G	H	I	J	K	L
		Control	RBCL	IRBCL	LPS	Title	Title	Title	Title	Title	Title	Title	Title
		Y	Y	Y	Y	Y	Y	Y	Y	Y	Y	Y	Y
1	Donor 2	1.000	0.865	1.135	19.187								
2	Donor 1	1.000	0.272	0.739	34.332								
3	Donor 3	1.000	1.000	1.000	62.090								
4	Donor 4	1.000	2.510	2.410	35.260								
5	Donor 5	1.000	1.000	1.000	4.920								
6	Donor 6	1.000	1.000	2.080	13.710								
7													
8													
9													
10													
11													
12													
13													
14													
15													
16													
17													
18													
19													
20													
21													
22													
23													
24													
25													
26													
27													
28													
29													

Transpose of IL-10

Row 1, A: Control

SourceDataforFigure1B

Prism 8

File Sheet Undo Clipboard Analysis Interpret Change Draw Write Text Export Print Send LA Help

Restrict: Sheet is Any

Info Project info 1

- Project info 1
- New Info...

Results

- Transpose of IL-1beta
- Ordinary one-way ANOVA of Transpose of IL-1beta
- Transpose of IL-6
- Ordinary one-way ANOVA of Transpose of IL-6
- Transpose of IL-10
- Ordinary one-way ANOVA of Transpose of IL-10
- Transpose of TNF**
- Ordinary one-way ANOVA of Transpose of TNF
- New Analysis...

Graphs

- IL-1beta
- IL-6
- IL-10

Family

- TNF
- Transpose
- Ordinary one-way ANOVA

		A	B	C	D	E	F	G	H	I	J	K	L
	Transpose	Control	RBCL	IRBCL	LPS	Title	Title	Title	Title	Title	Title	Title	Title
1	Donor 2	1.000	1.954	2.093	998.413	Y	Y	Y	Y	Y	Y	Y	Y
2	Donor 1	1.000	0.011	0.662	14.629								
3	Donor 3	1.000	1.647	3.911	578.387								
4	Donor 4	1.000	3.805	3.094	888.811								
5	Donor 5	1.000	1.000	10.430	667.560								
6	Donor 6	1.000	2.990	10.300	1372.370								
7													
8													
9													
10													
11													
12													
13													
14													
15													
16													
17													
18													
19													
20													
21													
22													
23													
24													
25													
26													
27													
28													
29													

Transpose of TNF

Row 1, A: Control

SourceDataforFigure1B

File Sheet Undo Clipboard Analysis Interpret Change Draw Write Text Export Print Send LA Help

Prism 8

ANOVA results Multiple comparisons

Restrict: Sheet is Any

Info Project info 1

- Project info 1
- New Info...

Results

- Transpose of IL-1beta
- Ordinary one-way ANOVA of Transpose of IL-1beta
- Transpose of IL-6
- Ordinary one-way ANOVA of Transpose of IL-6
- Transpose of IL-10
- Ordinary one-way ANOVA of Transpose of IL-10**
- Transpose of TNF
- Ordinary one-way ANOVA of Transpose of TNF
- New Analysis...

Graphs

- IL-1beta
- IL-6
- IL-10

Family

- IL-10
- Transpose
- Ordinary one-way ANOVA**

ANOVA results						
1	Table Analyzed	Transpose of IL-10				
2	Data sets analyzed	A-D				
3						
4	ANOVA summary					
5	F	10.61				
6	P value	0.0002				
7	P value summary	***				
8	Significant diff. among means (P < 0.05)?	Yes				
9	R square	0.6141				
10						
11	Brown-Forsythe test					
12	F (DFn, DFd)	11.46 (3, 20)				
13	P value	0.0001				
14	P value summary	***				
15	Are SDs significantly different (P < 0.05)?	Yes				
16						
17	Bartlett's test					
18	Bartlett's statistic (corrected)					
19	P value					
20	P value summary					
21	Are SDs significantly different (P < 0.05)?					
22						
23	ANOVA table	SS	DF	MS	F (DFn, DFd)	P value
24	Treatment (between columns)	3301	3	1100	F (3, 20) = 10.61	P=0.0002
25	Residual (within columns)	2074	20	103.7		
26	Total	5375	23			
27						
28	Data summary					

Ordinary one-way ANOVA of Transpose of IL-10 Row 1, Column A

SourceDataforFigure1B

File Sheet Undo Clipboard Analysis Interpret Change Draw Write Text Export Print Send LA Help

Prism8

ANOVA results Multiple comparisons

Restrict: Sheet is Any

Info Project info 1

- Project info 1
- New Info...

Results

- Transpose of IL-1beta
- Ordinary one-way ANOVA of Transpose of IL-1beta
- Transpose of IL-6
- Ordinary one-way ANOVA of Transpose of IL-6
- Transpose of IL-10
- Ordinary one-way ANOVA of Transpose of IL-10**
- Transpose of TNF
- Ordinary one-way ANOVA of Transpose of TNF
- New Analysis...

Graphs

- IL-1beta
- IL-6
- IL-10

Family

- IL-10
- Transpose
- Ordinary one-way ANOVA**

Ordinary one-way ANOVA		Multiple comparisons						
1	Number of families	1						
2	Number of comparisons per family	6						
3	Alpha	0.05						
4								
5	Tukey's multiple comparisons test	Mean Diff.	95.00% CI of diff.	Significant?	Summary	Adjusted P Value		
6	Control vs. RBCL	-0.1077	-16.56 to 16.35	No	ns	>0.9999	A-B	
7	Control vs. iRBCL	-0.3941	-16.85 to 16.06	No	ns	0.9999	A-C	
8	Control vs. LPS	-27.25	-43.71 to -10.79	Yes	***	0.0009	A-D	
9	RBCL vs. iRBCL	-0.2864	-16.74 to 16.17	No	ns	>0.9999	B-C	
10	RBCL vs. LPS	-27.14	-43.60 to -10.69	Yes	***	0.0009	B-D	
11	iRBCL vs. LPS	-26.86	-43.31 to -10.40	Yes	***	0.0010	C-D	
12								
13	Test details	Mean 1	Mean 2	Mean Diff.	SE of diff.	n1	n2	q
14	Control vs. RBCL	1.000	1.108	-0.1077	5.880	6	6	0.02591
15	Control vs. iRBCL	1.000	1.394	-0.3941	5.880	6	6	0.09479
16	Control vs. LPS	1.000	28.25	-27.25	5.880	6	6	6.554
17	RBCL vs. iRBCL	1.108	1.394	-0.2864	5.880	6	6	0.06889
18	RBCL vs. LPS	1.108	28.25	-27.14	5.880	6	6	6.528
19	iRBCL vs. LPS	1.394	28.25	-26.86	5.880	6	6	6.460
20								
21								
22								
23								
24								
25								
26								
27								
28								

Ordinary one-way ANOVA of Transpose of IL-10 Row 1, Column A

SourceDataforFigure1B

File Sheet Undo Clipboard Analysis Interpret Change Draw Write Text Export Print Send LA Help

Prism 8

Restrict: Sheet is Any

ANOVA results Multiple comparisons

Project info 1

Project info 1

New Info...

Results

- Transpose of IL-1beta
- Ordinary one-way ANOVA of Transpose of IL-1beta
- Transpose of IL-6
- Ordinary one-way ANOVA of Transpose of IL-6
- Transpose of IL-10
- Ordinary one-way ANOVA of Transpose of IL-10
- Transpose of TNF
- Ordinary one-way ANOVA of Transpose of TNF**
- New Analysis...

Graphs

- IL-1beta
- IL-6
- IL-10

Family

- TNF
- Transpose
- Ordinary one-way ANOVA**

Ordinary one-way ANOVA		Multiple comparisons									
1	Number of families										
2	Number of comparisons per family										
3	Alpha										
4											
5	Tukey's multiple comparisons test	95.00% CI of diff.	Significant?	Summary	Adjusted P Value						
6	Control vs. RBCL	-370.3 to 368.5	No	ns	>0.9999			A-B			
7	Control vs. iRBCL	-373.5 to 365.4	No	ns	>0.9999			A-C			
8	Control vs. LPS	-1122 to -382.9	Yes	****	<0.0001			A-D			
9	RBCL vs. iRBCL	-372.6 to 366.3	No	ns	>0.9999			B-C			
10	RBCL vs. LPS	-1121 to -382.0	Yes	****	<0.0001			B-D			
11	iRBCL vs. LPS	-1118 to -378.8	Yes	****	<0.0001			C-D			
12											
13	Test details	Mean 2	Mean Diff.	SE of diff.	n1	n2	q	DF			
14	Control vs. RBCL	1.901	-0.9013	132.0	6	6	0.009656	20			
15	Control vs. iRBCL	5.082	-4.082	132.0	6	6	0.04373	20			
16	Control vs. LPS	753.4	-752.4	132.0	6	6	8.061	20			
17	RBCL vs. iRBCL	5.082	-3.180	132.0	6	6	0.03408	20			
18	RBCL vs. LPS	753.4	-751.5	132.0	6	6	8.051	20			
19	iRBCL vs. LPS	753.4	-748.3	132.0	6	6	8.017	20			
20											
21											
22											
23											
24											
25											
26											
27											
28											

Ordinary one-way ANOVA of Transpose of TNF Row 1, Column A

SourceDataforFigure1B

File Sheet Undo Clipboard Analysis Interpret Change Draw Write Text Export Print Send LA Help

Prism 8

ANOVA results Multiple comparisons

Restrict: Sheet is Any

Info Project info 1

- Project info 1
- New Info...

Results

- Transpose of IL-1beta
- Ordinary one-way ANOVA of Transpose of IL-1beta
- Transpose of IL-6
- Ordinary one-way ANOVA of Transpose of IL-6
- Transpose of IL-10
- Ordinary one-way ANOVA of Transpose of IL-10
- Transpose of TNF
- Ordinary one-way ANOVA of Transpose of TNF**
- New Analysis...

Graphs

- IL-1beta
- IL-6
- IL-10

Family

- TNF
- Transpose
- Ordinary one-way ANOVA**

Ordinary one-way ANOVA		ANOVA results				
1	Table Analyzed	Transpose of TNF				
2	Data sets analyzed	A-D				
3						
4	ANOVA summary					
5	F	16.17				
6	P value	<0.0001				
7	P value summary	****				
8	Significant diff. among means (P < 0.05)?	Yes				
9	R square	0.7081				
10						
11	Brown-Forsythe test					
12	F (DFn, DFd)	8.623 (3, 20)				
13	P value	0.0007				
14	P value summary	***				
15	Are SDs significantly different (P < 0.05)?	Yes				
16						
17	Bartlett's test					
18	Bartlett's statistic (corrected)					
19	P value					
20	P value summary					
21	Are SDs significantly different (P < 0.05)?					
22						
23	ANOVA table	SS	DF	MS	F (DFn, DFd)	P value
24	Treatment (between columns)	2536037	3	845346	F (3, 20) = 16.17	P<0.0001
25	Residual (within columns)	1045371	20	52269		
26	Total	3581408	23			
27						
28	Data summary					

Ordinary one-way ANOVA of Transpose of TNF Row 1, Column A

SourceDataforFigure1C — Edited

Prism 8

File Sheet Undo Clipboard Analysis Change Import Draw Write Text Export Print Send LA Help

Q Search

▼ Data Tables >>

- IL1beta
- IL6
- IL10
- TNF
- + New Data Table...

▼ Info >>

- Project info 1
- Project info 1
- + New Info...

▼ Results >>

- Transpose of IL1beta
- Ordinary one-way ANOVA of Transpose of IL1beta
- Transpose of IL6
- Ordinary one-way ANOVA of Transpose of IL6
- Transpose of IL10
- Ordinary one-way ANOVA of Transpose of IL10
- Transpose of TNF

Family >>

- IL1beta
 - Transpose
 - Ordinary one-way ANOVA
 - IL1beta

Table format: Grouped		Group A	Group B	Group C	Group D	Group E	Group F	Group G	Group H	Group I	Group J	Group K	Group L
		Donor 1	Donor 2	Donor 3	Title	Title	Title	Title	Title	Title	Title	Title	Title
		Y	Y	Y	Y	Y	Y	Y	Y	Y	Y	Y	Y
1	IRBCL	1.000000	1.000000	1.00									
2	IFNy+IRBCL	1.000000	1.000000	1.00									
3	LPS	22.810000	29.880000	20.48									
4	IFNy+LPS	14.340000	1.000000	13.98									
5	Title												
6	Title												
7	Title												
8	Title												
9	Title												
10	Title												
11	Title												
12	Title												
13	Title												
14	Title												
15	Title												
16	Title												
17	Title												
18	Title												
19	Title												
20	Title												
21	Title												
22	Title												
23	Title												
24	Title												
25	Title												
26	Title												
27	Title												
28	Title												
29	Title												

IL1beta

Row --, Column --, Selected: Rows 0, Columns 1

SourceDataforFigure1C — Edited

Prism 8

File Sheet Undo Clipboard Analysis Change Import Draw Write Text Export Print Send LA Help

Q Search

Table format: Grouped

		Group A	Group B	Group C	Group D	Group E	Group F	Group G	Group H	Group I	Group J	Group K	Group
		Donor 1	Donor 2	Donor 3	Title	Title	Title	Title	Title	Title	Title	Title	Title
		Y	Y	Y	Y	Y	Y	Y	Y	Y	Y	Y	Y
1	IRBCL	2.112069	2.960000	12.28									
2	IFN γ +IRBCL	7.071839	36.340000	43.84									
3	LPS	1435.457000	5126.320000	10896.21									
4	IFN γ +LPS	2782.621000	8085.630000	15510.43									
5	Title												
6	Title												
7	Title												
8	Title												
9	Title												
10	Title												
11	Title												
12	Title												
13	Title												
14	Title												
15	Title												
16	Title												
17	Title												
18	Title												
19	Title												
20	Title												
21	Title												
22	Title												
23	Title												
24	Title												
25	Title												
26	Title												
27	Title												
28	Title												
29	Title												

Family

- IL6
 - Transpose
 - Ordinary one-way ANOVA
 - IL6

Row --, Column --, Selected: Rows 0, Columns 1

SourceDataforFigure1C — Edited

Prism 8

File Sheet Undo Clipboard Analysis Change Import Draw Write Text Export Print Send LA Help

Q Search

Table format: Grouped

		Group A	Group B	Group C	Group D	Group E	Group F	Group G	Group H	Group I	Group J	Group K	Group
		Donor 1	Donor 2	Donor 3	Title	Title	Title	Title	Title	Title	Title	Title	Title
		Y	Y	Y	Y	Y	Y	Y	Y	Y	Y	Y	Y
1	IRBCL	1.000000	1.000000	2.41									
2	IFNy+IRBCL	1.000000	1.000000	1.00									
3	LPS	13.510000	33.740000	35.26									
4	IFNy+LPS	6.460000	7.600000	31.44									
5	Title												
6	Title												
7	Title												
8	Title												
9	Title												
10	Title												
11	Title												
12	Title												
13	Title												
14	Title												
15	Title												
16	Title												
17	Title												
18	Title												
19	Title												
20	Title												
21	Title												
22	Title												
23	Title												
24	Title												
25	Title												
26	Title												
27	Title												
28	Title												
29	Title												

▼ Data Tables

- IL1beta
- IL6
- IL10**
- TNF
- New Data Table...

▼ Info

- Project info 1
- Project info 1
- New Info...

▼ Results

- Transpose of IL1beta
- Ordinary one-way ANOVA of Transpose of IL1beta
- Transpose of IL6
- Ordinary one-way ANOVA of Transpose of IL6
- Transpose of IL10**
- Ordinary one-way ANOVA of Transpose of IL10**
- Transpose of TNF

Family

- IL10**
 - Transpose
 - Ordinary one-way ANOVA
 - IL10

IL10

Row --, Column --, Selected: Rows 0, Columns 1

SourceDataforFigure1C — Edited

Prism 8

File Sheet Undo Clipboard Analysis Change Import Draw Write Text Export Print Send LA Help

Q Search

Table format: Grouped

		Group A	Group B	Group C	Group D	Group E	Group F	Group G	Group H	Group I	Group J	Group K	Group
		Donor 1	Donor 2	Donor 3	Title	Title	Title	Title	Title	Title	Title	Title	Title
		Y	Y	Y	Y	Y	Y	Y	Y	Y	Y	Y	Y
1	IRBCL	1.293333	6.301137	3.094395									
2	IFNy+IRBCL	2.926667	14.420460	5.858407									
3	LPS	381.500000	910.409100	888.811200									
4	IFNy+LPS	481.196700	998.948900	1143.826000									
5	Title												
6	Title												
7	Title												
8	Title												
9	Title												
10	Title												
11	Title												
12	Title												
13	Title												
14	Title												
15	Title												
16	Title												
17	Title												
18	Title												
19	Title												
20	Title												
21	Title												
22	Title												
23	Title												
24	Title												
25	Title												
26	Title												
27	Title												
28	Title												
29	Title												

▼ Data Tables

- IL1beta
- IL6
- IL10
- TNF**
- New Data Table...

▼ Info

- Project info 1
- Project info 1
- New Info...

▼ Results

- Transpose of IL1beta
- Ordinary one-way ANOVA of Transpose of IL1beta
- Transpose of IL6
- Ordinary one-way ANOVA of Transpose of IL6
- Transpose of IL10
- Ordinary one-way ANOVA of Transpose of IL10
- Transpose of TNF**

Family

- TNF**
 - Transpose
 - Ordinary one-way ANOVA
 - TNF

Row 10, B: Donor 2, Selected: Rows 0, Columns 1

SourceDataforFigure1C — Edited

Prism 8

ANOVA results

Multiple comparisons

Search

Data Tables

- IL1beta
- IL6
- IL10
- TNF
- New Data Table...

Info

- Project info 1
- Project info 1
- New Info...

Results

- Transpose of IL1beta
- Ordinary one-way ANOVA of Transpose of IL1beta**
- Transpose of IL6
- Ordinary one-way ANOVA of Transpose of IL6
- Transpose of IL10
- Ordinary one-way ANOVA of Transpose of IL10
- Transpose of TNF

Family

- IL1beta
- Transpose
- Ordinary one-way ANOVA**

Ordinary one-way ANOVA		ANOVA results				
1	Table Analyzed	Transpose of IL1beta				
2	Data sets analyzed	A-D				
3						
4	ANOVA summary					
5	F	17.89				
6	P value	0.0007				
7	P value summary	***				
8	Significant diff. among means (P < 0.05)?	Yes				
9	R square	0.8703				
10						
11	Brown-Forsythe test					
12	F (DFn, DFd)	0.9006 (3, 8)				
13	P value	0.4821				
14	P value summary	ns				
15	Are SDs significantly different (P < 0.05)?	No				
16						
17	Bartlett's test					
18	Bartlett's statistic (corrected)					
19	P value					
20	P value summary					
21	Are SDs significantly different (P < 0.05)?					
22						
23	ANOVA table	SS	DF	MS	F (DFn, DFd)	P value
24	Treatment (between columns)	1096	3	365.4	F (3, 8) = 17.89	P=0.0007
25	Residual (within columns)	163.4	8	20.43		
26	Total	1260	11			
27						
28	Data summary					

Ordinary one-way ANOVA of Transpose of IL1beta

Row 16, Column RT

SourceDataforFigure1C — Edited

Prism 8

File Sheet Undo Clipboard Analysis Interpret Change Draw Write Text Export Print Send LA Help

12 Helvetica

Q Search

▼ Data Tables

- IL1beta
- IL6
- IL10
- TNF
- New Data Table...

▼ Info

- Project info 1
- Project info 1
- New Info...

▼ Results

- Transpose of IL1beta
- Ordinary one-way ANOVA of Transpose of IL1beta
- Transpose of IL6
- Ordinary one-way ANOVA of Transpose of IL6
- Transpose of IL10
- Ordinary one-way ANOVA of Transpose of IL10
- Transpose of TNF

Family

- IL1beta
- Transpose
- Ordinary one-way ANOVA

Transpose		A	B	C	D	E	F	G	H	I	J	K	L
		iRBCL	IFNy+iRBCL	LPS	IFNy+LPS	Title	Title	Title	Title	Title	Title	Title	Title
1	Donor 1	1.000	1.000	22.810	14.340	Y	Y	Y	Y	Y	Y	Y	Y
2	Donor 2	1.000	1.000	29.880	1.000								
3	Donor 3	1.000	1.000	20.480	13.980								
4													
5													
6													
7													
8													
9													
10													
11													
12													
13													
14													
15													
16													
17													
18													
19													
20													
21													
22													
23													
24													
25													
26													
27													
28													
29													

Transpose of IL1beta

Row 1, A: iRBCL

SourceDataforFigure1C — Edited

File Sheet Undo Clipboard Analysis Interpret Change Draw Write Text Export Print Send LA Help

Prism8

Q Search

ANOVA results Multiple comparisons

Data Tables

- IL1beta
- IL6
- IL10
- TNF
- New Data Table...

Info

- Project info 1
- Project info 1
- New Info...

Results

- Transpose of IL1beta
- Ordinary one-way ANOVA of Transpose of IL1beta**
- Transpose of IL6
- Ordinary one-way ANOVA of Transpose of IL6
- Transpose of IL10
- Ordinary one-way ANOVA of Transpose of IL10
- Transpose of TNF

Family

- IL1beta
- Transpose
- Ordinary one-way ANOVA**

Ordinary one-way ANOVA									
Multiple comparisons									
1	Number of families	1							
2	Number of comparisons per family	2							
3	Alpha	0.05							
4									
5	Sidak's multiple comparisons test	Mean Diff.	95.00% CI of diff.	Significant?	Summary	Adjusted P Value			
6	iRBCL vs. IFN γ +iRBCL	0.000	-10.12 to 10.12	No	ns	>0.9999 A-B			
7	LPS vs. IFN γ +LPS	14.62	4.492 to 24.74	Yes	**	0.0083 C-D			
8									
9	Test details	Mean 1	Mean 2	Mean Diff.	SE of diff.	n1	n2	t	DF
10	iRBCL vs. IFN γ +iRBCL	1.000	1.000	0.000	3.691	3	3	0.000	8
11	LPS vs. IFN γ +LPS	24.39	9.773	14.62	3.691	3	3	3.961	8
12									
13									
14									
15									
16									
17									
18									
19									
20									
21									
22									
23									
24									
25									
26									
27									
28									

Ordinary one-way ANOVA of Transpose of IL1beta Row 16, Column RT

SourceDataforFigure1C — Edited

File Sheet Undo Clipboard Analysis Interpret Change Draw Write Text Export Print Send LA Help

Prism8

Q Search ANOVA results Multiple comparisons

▼ Data Tables

- IL1beta
- IL6
- IL10
- TNF
- + New Data Table...

▼ Info

- Project info 1
- Project info 1
- + New Info...

▼ Results

- Transpose of IL1beta
- Ordinary one-way ANOVA of Transpose of IL1beta
- Transpose of IL6
- Ordinary one-way ANOVA of Transpose of IL6**
- Transpose of IL10
- Ordinary one-way ANOVA of Transpose of IL10
- Transpose of TNF

Family

- IL6
 - Transpose
 - Ordinary one-way ANOVA

Ordinary one-way ANOVA		ANOVA results				
1	Table Analyzed	Transpose of IL6				
2	Data sets analyzed	A-D				
3						
4	ANOVA summary					
5	F	3.619				
6	P value	0.0647				
7	P value summary	ns				
8	Significant diff. among means (P < 0.05)?	No				
9	R square	0.5757				
10						
11	Brown-Forsythe test					
12	F (DFn, DFd)	2.454 (3, 8)				
13	P value	0.1379				
14	P value summary	ns				
15	Are SDs significantly different (P < 0.05)?	No				
16						
17	Bartlett's test					
18	Bartlett's statistic (corrected)					
19	P value					
20	P value summary					
21	Are SDs significantly different (P < 0.05)?					
22						
23	ANOVA table	SS	DF	MS	F (DFn, DFd)	P value
24	Treatment (between columns)	172638397	3	57546132	F (3, 8) = 3.619	P=0.0647
25	Residual (within columns)	127223028	8	15902879		
26	Total	299861425	11			
27						
28	Data summary					

Ordinary one-way ANOVA of Transpose of IL6 Row 1, Column A

SourceDataforFigure1C — Edited

Prism 8

File Sheet Undo Clipboard Analysis Interpret Change Draw Write Text Export Print Send LA Help

12 Helvetica

Search

▼ Data Tables

- IL1beta
- IL6
- IL10
- TNF
- + New Data Table...

▼ Info

- Project info 1
- Project info 1
- + New Info...

▼ Results

- Transpose of IL1beta
- Ordinary one-way ANOVA of Transpose of IL1beta
- Transpose of IL6**
- Ordinary one-way ANOVA of Transpose of IL6
- Transpose of IL10
- Ordinary one-way ANOVA of Transpose of IL10
- Transpose of TNF

Family

- IL6
- Transpose
- Ordinary one-way ANOVA

Transpose		A	B	C	D	E	F	G	H	I	J	K	L
		iRBCL	IFNy+iRBCL	LPS	IFNy+LPS	Title	Title	Title	Title	Title	Title	Title	Title
1	Donor 1	2.112	7.072	1435.457	2782.621	Y	Y	Y	Y	Y	Y	Y	Y
2	Donor 2	2.960	36.340	5126.320	8085.630								
3	Donor 3	12.280	43.840	10896.210	15510.430								
4													
5													
6													
7													
8													
9													
10													
11													
12													
13													
14													
15													
16													
17													
18													
19													
20													
21													
22													
23													
24													
25													
26													
27													
28													
29													

Transpose of IL6

Row 1, A: iRBCL

SourceDataforFigure1C — Edited

Prism 8

File Sheet Undo Clipboard Analysis Interpret Change Draw Write Text Export Print Send LA Help

12 Helvetica

Q Search

▼ Data Tables

- IL1beta
- IL6
- IL10**
- TNF
- New Data Table...

▼ Info

- Project info 1
- Project info 1
- New Info...

▼ Results

- Transpose of IL1beta
- Ordinary one-way ANOVA of Transpose of IL1beta
- Transpose of IL6
- Ordinary one-way ANOVA of Transpose of IL6
- Transpose of IL10**
- Ordinary one-way ANOVA of Transpose of IL10
- Transpose of TNF

Family

- IL10
- Transpose**
- Ordinary one-way ANOVA

Transpose		A	B	C	D	E	F	G	H	I	J	K	L
		iRBCL	IFNy+iRBCL	LPS	IFNy+LPS	Title	Title	Title	Title	Title	Title	Title	Title
1	Donor 1	1.000	1.000	13.510	6.460	Y	Y	Y	Y	Y	Y	Y	Y
2	Donor 2	1.000	1.000	33.740	7.600								
3	Donor 3	2.410	1.000	35.260	31.440								
4													
5													
6													
7													
8													
9													
10													
11													
12													
13													
14													
15													
16													
17													
18													
19													
20													
21													
22													
23													
24													
25													
26													
27													
28													
29													

Transpose of IL10

Row 1, A: iRBCL

SourceDataforFigure1C — Edited

Prism8

ANOVA results

Multiple comparisons

Ordinary one-way ANOVA
ANOVA results

1	Table Analyzed	Transpose of IL10
2	Data sets analyzed	A-D
3		
4	ANOVA summary	
5	F	5.535
6	P value	0.0236
7	P value summary	*
8	Significant diff. among means (P < 0.05)?	Yes
9	R square	0.6749
10		
11	Brown-Forsythe test	
12	F (DFn, DFd)	0.7489 (3, 8)
13	P value	0.5529
14	P value summary	ns
15	Are SDs significantly different (P < 0.05)?	No
16		
17	Bartlett's test	
18	Bartlett's statistic (corrected)	
19	P value	
20	P value summary	
21	Are SDs significantly different (P < 0.05)?	
22		
23	ANOVA table	
24	Treatment (between columns)	SS DF MS F (DFn, DFd) P value
25	Residual (within columns)	1441 3 480.2 F (3, 8) = 5.535 P=0.0236
26	Total	694.1 8 86.76
27		2135 11
28	Data summary	

Ordinary one-way ANOVA of Transpose of IL10

Row 1, Column A

SourceDataforFigure1C — Edited

File Sheet Undo Clipboard Analysis Interpret Change Draw Write Text Export Print Send LA Help

Prism8

Search

ANOVA results Multiple comparisons

Ordinary one-way ANOVA
 Multiple comparisons

1	Number of families	1							
2	Number of comparisons per family	2							
3	Alpha	0.05							
4									
5	Sidak's multiple comparisons test	Mean Diff.	95.00% CI of diff.	Significant?	Summary	Adjusted P Value			
6	iRBCL vs. IFN γ +iRBCL	-23.30	-8956 to 8909	No	ns	>0.9999		A-B	
7	LPS vs. IFN γ +LPS	-2974	-11906 to 5959	No	ns	0.6252		C-D	
8									
9	Test details	Mean 1	Mean 2	Mean Diff.	SE of diff.	n1	n2	t	DF
10	iRBCL vs. IFN γ +iRBCL	5.784	29.08	-23.30	3256	3	3	0.007156	8
11	LPS vs. IFN γ +LPS	5819	8793	-2974	3256	3	3	0.9132	8
12									
13									
14									
15									
16									
17									
18									
19									
20									
21									
22									
23									
24									
25									
26									
27									
28									

Family

- IL6
 - Transpose
 - Ordinary one-way ANOVA

Ordinary one-way ANOVA of Transpose of IL6 Row 1, Column A

SourceDataforFigure1C — Edited

Prism 8

File Sheet Undo Clipboard Analysis Interpret Change Draw Write Text Export Print Send LA Help

Q Search

ANOVA results Multiple comparisons

▼ Data Tables

- IL1beta
- IL6
- IL10**
- TNF
- New Data Table...

▼ Info

- Project info 1
- Project info 1
- New Info...

▼ Results

- Transpose of IL1beta
- Ordinary one-way ANOVA of Transpose of IL1beta
- Transpose of IL6
- Ordinary one-way ANOVA of Transpose of IL6
- Transpose of IL10
- Ordinary one-way ANOVA of Transpose of IL10**
- Transpose of TNF

Family

- IL10
 - Transpose
 - Ordinary one-way ANOVA**

Ordinary one-way ANOVA		Multiple comparisons							
1	Number of families	1							
2	Number of comparisons per family	2							
3	Alpha	0.05							
4									
Sidak's multiple comparisons test		Mean Diff.	95.00% CI of diff.	Significant?	Summary	Adjusted P Value			
6	iRBCL vs. IFN γ +iRBCL	0.4700	-20.39 to 21.33	No	ns	0.9977 A-B			
7	LPS vs. IFN γ +LPS	12.34	-8.527 to 33.20	No	ns	0.2663 C-D			
8									
Test details		Mean 1	Mean 2	Mean Diff.	SE of diff.	n1	n2	t	DF
10	iRBCL vs. IFN γ +iRBCL	1.470	1.000	0.4700	7.605	3	3	0.06180	8
11	LPS vs. IFN γ +LPS	27.50	15.17	12.34	7.605	3	3	1.622	8
12									
13									
14									
15									
16									
17									
18									
19									
20									
21									
22									
23									
24									
25									
26									
27									
28									

Ordinary one-way ANOVA of Transpose of IL10 Row 1, Column A

SourceDataforFigure1C — Edited

File Sheet Undo Clipboard Analysis Interpret Change Draw Write Text Export Print Send LA Help

Prism 8

Q Search ANOVA results Multiple comparisons

▼ Data Tables

▼ Info

- Project info 1
- Project info 1
- New Info...

▼ Results

- Transpose of IL1beta
- Ordinary one-way ANOVA of Transpose of IL1beta
- Transpose of IL6
- Ordinary one-way ANOVA of Transpose of IL6
- Transpose of IL10
- Ordinary one-way ANOVA of Transpose of IL10
- Transpose of TNF
- Ordinary one-way ANOVA of Transpose of TNF**
- New Analysis...

▼ Graphs

- IL1beta

Family

- TNF
 - Transpose
 - Ordinary one-way ANOVA**

Ordinary one-way ANOVA		ANOVA results				
1	Table Analyzed	Transpose of TNF				
2	Data sets analyzed	A-D				
3						
4	ANOVA summary					
5	F	12.19				
6	P value	0.0024				
7	P value summary	**				
8	Significant diff. among means (P < 0.05)?	Yes				
9	R square	0.8205				
10						
11	Brown-Forsythe test					
12	F (DFn, DFd)	1.024 (3, 8)				
13	P value	0.4317				
14	P value summary	ns				
15	Are SDs significantly different (P < 0.05)?	No				
16						
17	Bartlett's test					
18	Bartlett's statistic (corrected)					
19	P value					
20	P value summary					
21	Are SDs significantly different (P < 0.05)?					
22						
23	ANOVA table	SS	DF	MS	F (DFn, DFd)	P value
24	Treatment (between columns)	1929480	3	643160	F (3, 8) = 12.19	P=0.0024
25	Residual (within columns)	421988	8	52748		
26	Total	2351468	11			
27						
28	Data summary					

Ordinary one-way ANOVA of Transpose of TNF Row 1, Column A

SourceDataforFigure1C — Edited

Prism 8

File Sheet Undo Clipboard Analysis Interpret Change Draw Write Text Export Print Send LA Help

12 Helvetica

Search

Data Tables

- Info
 - Project info 1
 - Project info 1
 - New Info...
- Results
 - Transpose of IL1beta
 - Ordinary one-way ANOVA of Transpose of IL1beta
 - Transpose of IL6
 - Ordinary one-way ANOVA of Transpose of IL6
 - Transpose of IL10
 - Ordinary one-way ANOVA of Transpose of IL10
 - Transpose of TNF**
 - Ordinary one-way ANOVA of Transpose of TNF
 - New Analysis...
- Graphs
 - IL1beta

Family

- TNF
 - Transpose**
 - Ordinary one-way ANOVA

	Transpose	A	B	C	D	E	F	G	H	I	J	K	L
		iRBCL	IFNy+iRBCL	LPS	IFNy+LPS	Title	Title	Title	Title	Title	Title	Title	Title
1	Donor 1	1.293	2.927	381.500	481.197	Y	Y	Y	Y	Y	Y	Y	Y
2	Donor 2	6.301	14.420	910.409	998.949								
3	Donor 3	3.094	5.858	888.811	1143.826								
4													
5													
6													
7													
8													
9													
10													
11													
12													
13													
14													
15													
16													
17													
18													
19													
20													
21													
22													
23													
24													
25													
26													
27													
28													
29													

Transpose of TNF

Row 1, A: iRBCL

SourceDataforFigure1C — Edited

File Sheet Undo Clipboard Analysis Interpret Change Draw Write Text Export Print Send LA Help

Prism8

Q Search

ANOVA results Multiple comparisons

Data Tables

Info

Results

Graphs

Family

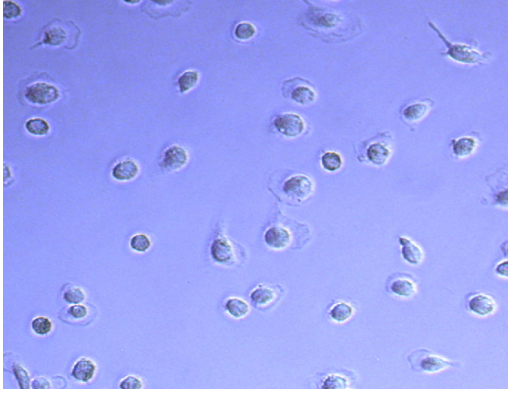
ANOVA results

Multiple comparisons

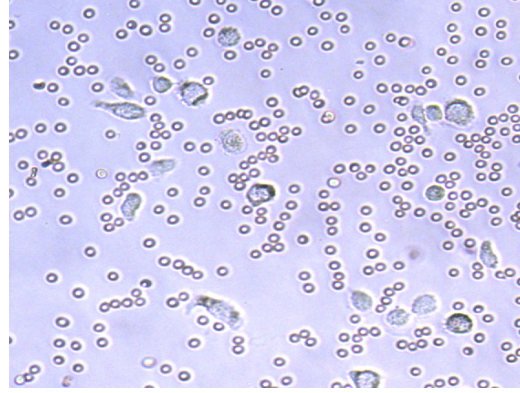
Ordinary one-way ANOVA									
Multiple comparisons									
1	Number of families	1							
2	Number of comparisons per family	2							
3	Alpha	0.05							
4									
Sidak's multiple comparisons test		Mean Diff.	95.00% CI of diff.	Significant?	Summary	Adjusted P Value			
6	iRBCL vs. IFN γ +iRBCL	-4.172	-518.6 to 510.3	No	ns	0.9997 A-B			
7	LPS vs. IFN γ +LPS	-147.8	-662.2 to 366.7	No	ns	0.7013 C-D			
8									
Test details		Mean 1	Mean 2	Mean Diff.	SE of diff.	n1	n2	t	DF
10	iRBCL vs. IFN γ +iRBCL	3.563	7.735	-4.172	187.5	3	3	0.02225	8
11	LPS vs. IFN γ +LPS	726.9	874.7	-147.8	187.5	3	3	0.7879	8
12									
13									
14									
15									
16									
17									
18									
19									
20									
21									
22									
23									
24									
25									
26									
27									
28									

Ordinary one-way ANOVA of Transpose of TNF Row 1, Column A

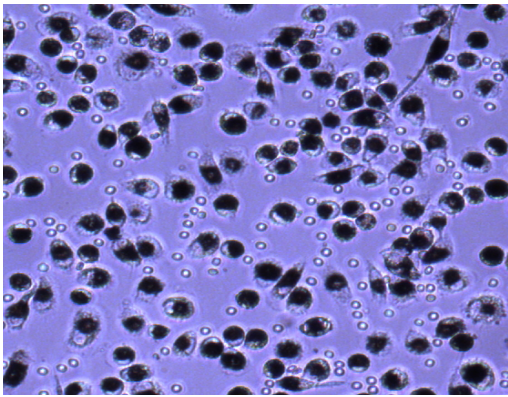
Control



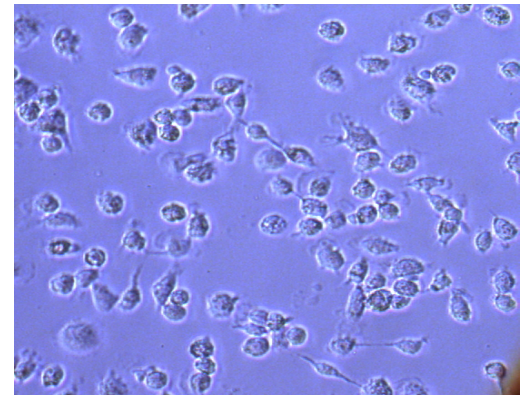
RBC



iRBC



LPS



SourceDataforFigure1E

File Sheet Undo Clipboard Analysis Change Import Draw Write Text Export Print Send LA Help

Prism 8

Q Search

▼ Data Tables >>

- IL1beta
- IL6
- IL10
- TNF
- New Data Table...

▼ Info >>

- Project info 1
- Project info 1
- New Info...

▼ Results >>

- Transpose of IL1beta
- Paired t test of Transpose of IL1beta
- Transpose of IL6
- Paired t test of Transpose of IL6
- Transpose of IL10
- Paired t test of Transpose of IL10

Family >>

- IL1beta
 - Transpose
 - Paired t test
 - IL1beta

Table format:		Group A	Group B	Group C	Group D	Group E	Group F	Group G	Group H	Group I	Group J
Grouped		Donor 1	Donor 2	Donor 3	Title	Title	Title	Title	Title	Title	Title
		Y	Y	Y	Y	Y	Y	Y	Y	Y	Y
1	IRBCL	1.000000	1.000000	0.941964286							
2	IRBCL+LPS	158.630000	24.950000	24.308056870							
3	Title										
4	Title										
5	Title										
6	Title										
7	Title										
8	Title										
9	Title										
10	Title										
11	Title										
12	Title										
13	Title										
14	Title										
15	Title										
16	Title										
17	Title										
18	Title										
19	Title										
20	Title										
21	Title										
22	Title										
23	Title										
24	Title										
25	Title										

IL1beta

Row 2, Column RT, Selected: Rows 2, Columns 4

SourceDataforFigure1E

File Sheet Undo Clipboard Analysis Change Import Draw Write Text Export Print Send LA Help

Prism 8

Q Search

▼ Data Tables >>

- IL1beta
- IL6**
- IL10
- TNF
- + New Data Table...

▼ Info >>

- Project info 1
- Project info 1
- + New Info...

▼ Results >>

- Transpose of IL1beta
- Paired t test of Transpose of IL1beta
- Transpose of IL6**
- Paired t test of Transpose of IL6
- Transpose of IL10
- Paired t test of Transpose of IL10

Family >>

- IL6**
 - Transpose
 - Paired t test
 - IL6

Table format:		Group A	Group B	Group C	Group D	Group E	Group F	Group G	Group H	Group I	Group J	Group K
Grouped		Donor 1	Donor 2	Donor 3	Title	Title	Title	Title	Title	Title	Title	Title
		Y	Y	Y	Y	Y	Y	Y	Y	Y	Y	Y
1	iRBCL	4.550000	9.890000	0.591439689								
2	iRBCL+LPS	8598.150000	16785.590000	804.11842110								
3	Title											
4	Title											
5	Title											
6	Title											
7	Title											
8	Title											
9	Title											
10	Title											
11	Title											
12	Title											
13	Title											
14	Title											
15	Title											
16	Title											
17	Title											
18	Title											
19	Title											
20	Title											
21	Title											
22	Title											
23	Title											
24	Title											
25	Title											

IL6

Row 2, Column RT, Selected: Rows 2, Columns 4

SourceDataforFigure1E

File Sheet Undo Clipboard Analysis Change Import Draw Write Text Export Print Send LA Help

Prism 8

Q Search

▼ Data Tables >>

- IL1beta
- IL6
- IL10**
- TNF
- + New Data Table...

▼ Info >>

- Project info 1
- Project info 1
- + New Info...

▼ Results >>

- Transpose of IL1beta
- Paired t test of Transpose of IL1beta
- Transpose of IL6
- Paired t test of Transpose of IL6
- Transpose of IL10**
- Paired t test of Transpose of IL10**

Family >>

- IL10**
 - Transpose
 - Paired t test
 - IL10

Table format:		Group A	Group B	Group C	Group D	Group E	Group F	Group G	Group H	Group I	Group J	Group K
Grouped		Donor 1	Donor 2	Donor 3	Title	Title	Title	Title	Title	Title	Title	Title
		Y	Y	Y	Y	Y	Y	Y	Y	Y	Y	Y
1	iRBCL	3.170000	2.140000	2.18000000								
2	iRBCL+LPS	72.060000	53.180000	2.14678899								
3	Title											
4	Title											
5	Title											
6	Title											
7	Title											
8	Title											
9	Title											
10	Title											
11	Title											
12	Title											
13	Title											
14	Title											
15	Title											
16	Title											
17	Title											
18	Title											
19	Title											
20	Title											
21	Title											
22	Title											
23	Title											
24	Title											
25	Title											

IL10

Row 2, Column RT, Selected: Rows 1, Columns 4

SourceDataforFigure1E

File Sheet Undo Clipboard Analysis Change Import Draw Write Text Export Print Send LA Help

Prism 8

Q Search

▼ Data Tables >>

- IL1beta
- IL6
- IL10
- TNF**
- + New Data Table...

▼ Info >>

- Project info 1
- Project info 1
- + New Info...

▼ Results >>

- Transpose of IL1beta
- Paired t test of Transpose of IL1beta
- Transpose of IL6
- Paired t test of Transpose of IL6
- Transpose of IL10
- Paired t test of Transpose of IL10

Family >>

- TNF**
 - Transpose
 - Paired t test
 - TNF

Table format:		Group A	Group B	Group C	Group D	Group E	Group F	Group G	Group H	Group I	Group J	Group K
Grouped		Donor 1	Donor 2	Donor 3	Title	Title	Title	Title	Title	Title	Title	Title
		Y	Y	Y	Y	Y	Y	Y	Y	Y	Y	Y
1	iRBCL	19.920000	8.210000	0.76679841								
2	iRBCL+LPS	6265.400000	7387.530000	142.417525								
3	Title											
4	Title											
5	Title											
6	Title											
7	Title											
8	Title											
9	Title											
10	Title											
11	Title											
12	Title											
13	Title											
14	Title											
15	Title											
16	Title											
17	Title											
18	Title											
19	Title											
20	Title											
21	Title											
22	Title											
23	Title											
24	Title											
25	Title											

Row 2, Column RT, Selected: Rows 1, Columns 4

Q Search

▼ Data Tables >>

- IL1beta
- IL6
- IL10
- TNF
- + New Data Table...

▼ Info >>

- Project info 1
- Project info 1
- + New Info...

▼ Results >>

- Transpose of IL1beta
- Paired t test of Transpose of IL1beta**
- Transpose of IL6
- Paired t test of Transpose of IL6
- Transpose of IL10
- Paired t test of Transpose of IL10

Family >>

- IL1beta
- Transpose
- Paired t test**

Paired t test									
9	P value summary	ns							
10	Significantly different (P < 0.05)?	No							
11	One- or two-tailed P value?	Two-tailed							
12	t, df	t=1.530, df=2							
13	Number of pairs	3							
14									
15	How big is the difference?								
16	Mean of differences (B - A)	68.32							
17	SD of differences	77.35							
18	SEM of differences	44.66							
19	95% confidence interval	-123.8 to 260.5							
20	R squared (partial eta squared)	0.5392							
21									
22	How effective was the pairing?								
23	Correlation coefficient (r)	0.5036							
24	P value (one tailed)	0.3320							
25	P value summary	ns							
26	Was the pairing significantly effective?	No							
27									
28									
29									
30									
31									
32									
33									

SourceDataforFigure1E

File Sheet Undo Clipboard Analysis Interpret Change Draw Write Text Export Print Send LA Help

12 Helvetica

Prism8

Search

Data Tables

- IL1beta
- IL6
- IL10
- TNF
- New Data Table...

Info

- Project info 1
- Project info 1
- New Info...

Results

- Transpose of IL1beta
- Paired t test of Transpose of IL1beta
- Transpose of IL6**
- Paired t test of Transpose of IL6
- Transpose of IL10
- Paired t test of Transpose of IL10

Family

- IL6
 - Transpose
 - Paired t test

	Transpose	A	B	C	D	E	F	G	H	I	J	K	L
		IRBCL	IRBCL+LPS	Title	Title	Title	Title	Title	Title	Title	Title	Title	Title
		Y	Y	Y	Y	Y	Y	Y	Y	Y	Y	Y	Y
1	Donor 1	4.550	8598.150										
2	Donor 2	9.890	16785.590										
3	Donor 3	0.591	804.118										
4													
5													
6													
7													
8													
9													
10													
11													
12													
13													
14													
15													
16													
17													
18													
19													
20													
21													
22													
23													
24													
25													
26													

Transpose of IL6

Row 1, A: iRBCL

SourceDataforFigure1E

File Sheet Undo Clipboard Analysis Interpret Change Draw Write Text Export Print Send LA Help

Prism 8

Q Search

▼ Data Tables

- IL1beta
- IL6
- IL10
- TNF
- New Data Table...

▼ Info

- Project info 1
- Project info 1
- New Info...

▼ Results

- Transpose of IL1beta
- Paired t test of Transpose of IL1beta
- Transpose of IL6
- Paired t test of Transpose of IL6**
- Transpose of IL10
- Paired t test of Transpose of IL10

Family

- IL6
 - Transpose
 - Paired t test**

Paired t test		
9	P value summary	ns
10	Significantly different (P < 0.05)?	No
11	One- or two-tailed P value?	Two-tailed
12	t, df	t=1.892, df=2
13	Number of pairs	3
14		
15	How big is the difference?	
16	Mean of differences (B - A)	8724
17	SD of differences	7987
18	SEM of differences	4611
19	95% confidence interval	-11116 to 28565
20	R squared (partial eta squared)	0.6415
21		
22	How effective was the pairing?	
23	Correlation coefficient (r)	0.9975
24	P value (one tailed)	0.0227
25	P value summary	*
26	Was the pairing significantly effective?	Yes
27		
28		
29		
30		
31		
32		
33		

Paired t test of Transpose of IL6 Row 1, Column A

SourceDataforFigure1E

File Sheet Undo Clipboard Analysis Interpret Change Draw Write Text Export Print Send LA Help

Prism 8

Search

Data Tables

- IL1beta
- IL6
- IL10**
- TNF
- New Data Table...

Info

- Project info 1
- Project info 1
- New Info...

Results

- Transpose of IL1beta
- Paired t test of Transpose of IL1beta
- Transpose of IL6
- Paired t test of Transpose of IL6
- Transpose of IL10**
- Paired t test of Transpose of IL10

Family

- IL10
 - Transpose
 - Paired t test

	Transpose	A	B	C	D	E	F	G	H	I	J	K	L
		IRBCL	IRBCL+LPS	Title	Title	Title	Title	Title	Title	Title	Title	Title	Title
		Y	Y	Y	Y	Y	Y	Y	Y	Y	Y	Y	Y
1	Donor 1	3.170	72.060										
2	Donor 2	2.140	53.180										
3	Donor 3	2.180	2.147										
4													
5													
6													
7													
8													
9													
10													
11													
12													
13													
14													
15													
16													
17													
18													
19													
20													
21													
22													
23													
24													
25													

Transpose of IL10

Row 1, A: iRBCL

SourceDataforFigure1E

File Sheet Undo Clipboard Analysis Interpret Change Draw Write Text Export Print Send LA Help

12 Helvetica

Prism 8

Q Search

▼ Info

- Project info 1
- Project info 1
- New Info...

▼ Results

- Transpose of IL1beta
- Paired t test of Transpose of IL1beta
- Transpose of IL6
- Paired t test of Transpose of IL6
- Transpose of IL10
- Paired t test of Transpose of IL10
- Transpose of TNF**
- Paired t test of Transpose of TNF
- New Analysis...

▼ Graphs

- IL1beta
- IL6

Family

- TNF
- Transpose
- Paired t test

	Transpose	A	B	C	D	E	F	G	H	I	J	K
		IRBCL	IRBCL+LPS	Title	Title	Title	Title	Title	Title	Title	Title	Title
		Y	Y	Y	Y	Y	Y	Y	Y	Y	Y	Y
1	Donor 1	19.920	6265.400									
2	Donor 2	8.210	7387.530									
3	Donor 3	0.767	142.418									
4												
5												
6												
7												
8												
9												
10												
11												
12												
13												
14												
15												
16												
17												
18												
19												
20												
21												
22												
23												
24												
25												

Transpose of TNF

Row 1, A: IRBCL

SourceDataforFigure1E

File Sheet Undo Clipboard Analysis Interpret Change Draw Write Text Export Print Send LA Help

12 Helvetica

Prism8

Search

Data Tables

- IL1beta
- IL6
- IL10
- TNF
- New Data Table...

Info

- Project info 1
- Project info 1
- New Info...

Results

- Transpose of IL1beta
- Paired t test of Transpose of IL1beta
- Transpose of IL6
- Paired t test of Transpose of IL6
- Transpose of IL10
- Paired t test of Transpose of IL10

Family

- IL1beta
- Transpose
- Paired t test

	Transpose	A	B	C	D	E	F	G	H	I	J	K	L
		IRBCL	IRBCL+LPS	Title	Title	Title	Title	Title	Title	Title	Title	Title	Title
		Y	Y	Y	Y	Y	Y	Y	Y	Y	Y	Y	Y
1	Donor 1	1.000	158.630										
2	Donor 2	1.000	24.950										
3	Donor 3	0.942	24.308										
4													
5													
6													
7													
8													
9													
10													
11													
12													
13													
14													
15													
16													
17													
18													
19													
20													
21													
22													
23													
24													
25													

Transpose of IL1beta

Row 1, A: IRBCL

SourceDataforFigure1E

File Sheet Undo Clipboard Analysis Interpret Change Draw Write Text Export Print Send LA Help

Q Search

▼ Info

- Project info 1
- Project info 1
- New Info...

▼ Results

- Transpose of IL1beta
- Paired t test of Transpose of IL1beta
- Transpose of IL6
- Paired t test of Transpose of IL6
- Transpose of IL10
- Paired t test of Transpose of IL10
- Transpose of TNF
- Paired t test of Transpose of TNF**
- New Analysis...

▼ Graphs

- IL1beta
- IL6

Family

- TNF
- Transpose
- Paired t test**

Paired t test	
1	Table Analyzed
2	
3	Column B
4	vs.
5	Column A
6	
7	Paired t test
8	P value
9	P value summary
10	Significantly different (P < 0.05)?
11	One- or two-tailed P value?
12	t, df
13	Number of pairs
14	
15	How big is the difference?
16	Mean of differences (B - A)
17	SD of differences
18	SEM of differences
19	95% confidence interval
20	R squared (partial eta squared)
21	
22	How effective was the pairing?
23	Correlation coefficient (r)
24	P value (one tailed)
25	P value summary

Prism 8

Paired t test of Transpose of TNF Row 1, Column A

Paired t test																				
8	P value	0.1926																		
9	P value summary	ns																		
10	Significantly different (P < 0.05)?	No																		
11	One- or two-tailed P value?	Two-tailed																		
12	t, df	t=1.935, df=2																		
13	Number of pairs	3																		
14																				
15	How big is the difference?																			
16	Mean of differences (B - A)	39.97																		
17	SD of differences	35.77																		
18	SEM of differences	20.65																		
19	95% confidence interval	-48.90 to 128.8																		
20	R squared (partial eta squared)	0.6519																		
21																				
22	How effective was the pairing?																			
23	Correlation coefficient (r)	0.6841																		
24	P value (one tailed)	0.2602																		
25	P value summary	ns																		
26	Was the pairing significantly effective?	No																		
27																				
28																				
29																				
30																				
31																				
32																				