

**OMTM, Volume 14**

**Supplemental Information**

**Transduction Pattern of AAVs in the Trabecular  
Meshwork and Anterior-Segment Structures  
in a Rat Model of Ocular Hypertension**

**Si Hyung Lee, Kyeong Sun Sim, Chan Yun Kim, and Tae Kwann Park**

Supplemental Figures

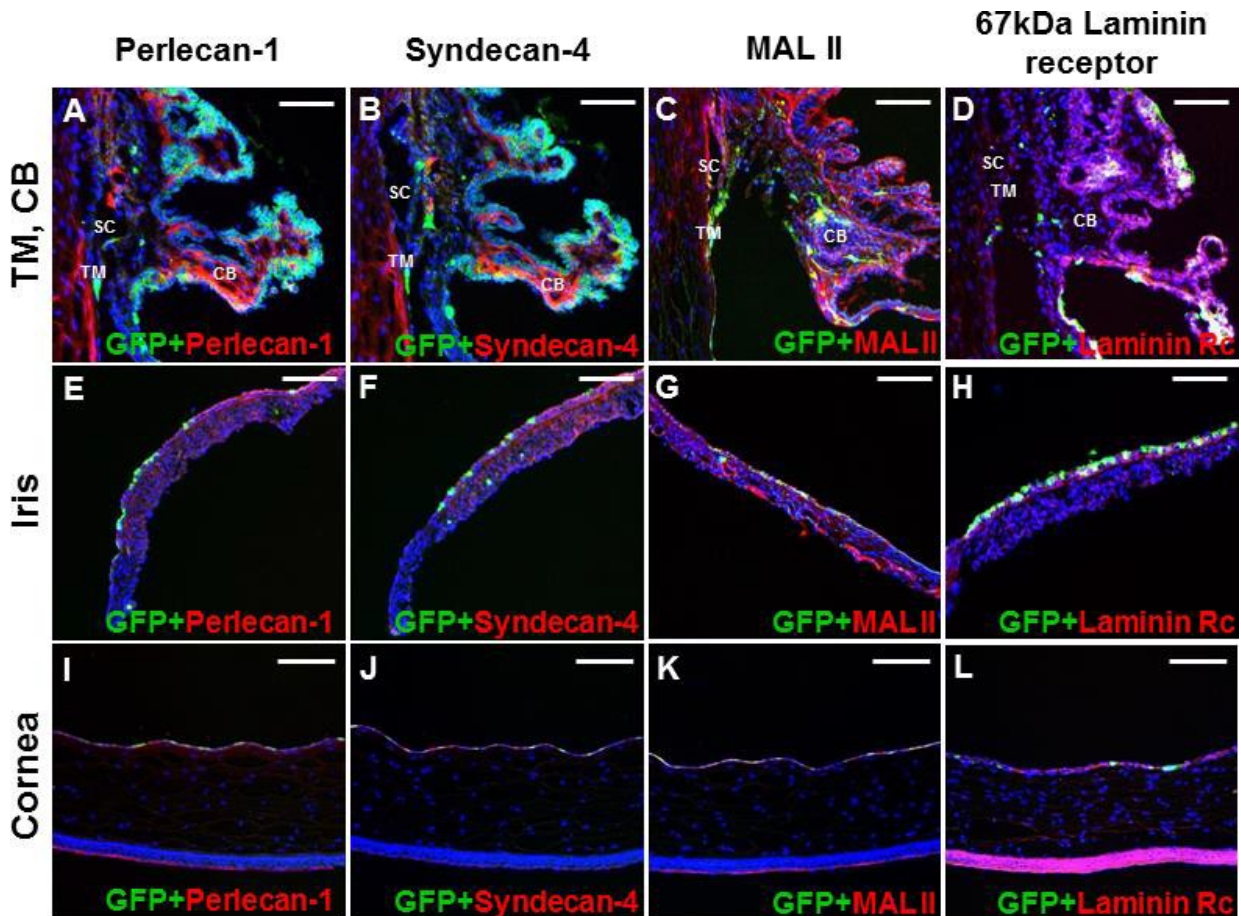
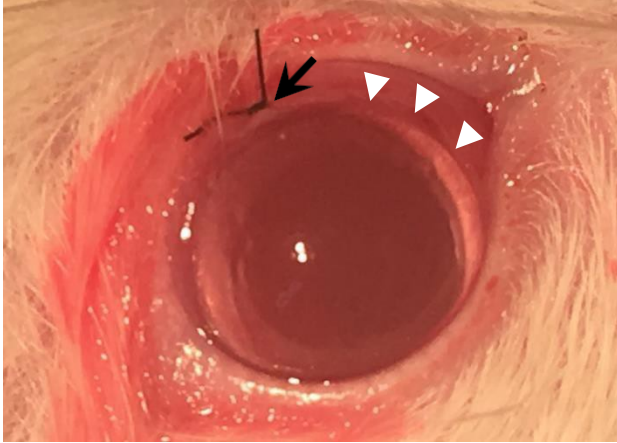


Figure S1. Cross-sectional images of the anterior segment of OHT and control eyes immunostained for GFP (green) and perlecan-1, syndecan-4, MAL II, and 67kDa laminin receptor (red) at 1 months after circumlimbal suture.

Transverse sectional images of anterior segment revealed co-localization of EGFP and receptors for AAV2 (perlecan-1 and syndecan-4), AAV5 (MAL II), and AAV8 (67kDa laminin receptor) in several portion of TM and ciliary body (A-D), iris (E-H), and corneal endothelium (I-L). Images are representatives of 45 mice analyzed (30 for OHT group and 15 for control). Scale bar, 20  $\mu$ m.



**Figure S2. Circumlimbal suture to produce a rat model of OHT.**

To produce an OHT rat model, circumlimbal suturing was performed to elevate IOP in one eye. Circumferential suturing around the globe at approximately 1.0–1.5 mm behind the limbus was performed using 7/0 nylon compress and pressurize the eyeball.

**Supplemental Tables****Table S1. Primary antibodies used in this study**

<b>Target</b>	<b>Host</b>	<b>Manufacturer</b>	<b>Catalog No.</b>	<b>Dilution</b>
GS	Mouse	Millipore, Billerica, MA, USA	MAB302	1:500
CD31	Rat	BD Transduction Laboratories, Lexington, KY, USA	550274	1:100
iba-1	Rabbit	Wako Chemicals, Osaka, Japan	019-19741	1:1000
NeuN	Mouse	Millipore, Billerica, MA, USA	MAB377	1:2000
PKC $\alpha$	Mouse	Santa Cruz Biotechnology, Dallas, TX, USA	SC-8393	1:1000
Calbindin	Mouse	Sigma-Aldrich, St. Louis, MO, USA	C9848	1:100
Calretinin	Rabbit	Sigma-Aldrich, St. Louis, MO, USA	C7479	1:400
Perlecan	Rat	Invitrogen, Carlsbad, CA, USA	MA5-14641	
Syndecan-4	Rabbit	Abcam, Cambridge, UK	ab24511	1:500
37/67kDa laminin receptor	Rabbit	Abcam Cambridge, UK	ab137388	1:100

**Table S2. Primers used in this study**

Gene	Primer sequence	
	Forward	Reverse
Glypican-1	5'TGGCGCCTACGGTGGAAATGATGT-3'	5'-GAGTGGCGGCCGAGGTCTTCTGTC-3'
Syndecan-4	5'-GAACCATGGCGCCTGTCTGC-3'	5'-CCTGGGCTCCTCCGTGTCATCT-3'
Perlecan-1	5'-AGGTCCTTTCCCGCCCA-3'	5'-CAACTTGACAGGGATGGCGA-3'
37/67kDa laminin receptor	5'-AGCGAGCTGTGCTGAAGTTT-3'	5'-GTCACCACTAGAAGCCGTGG-3'
GAPDH	5'-ACGGCAAATTCAACGGCA-3'	5'-GGTCATGAGCCCTTCCAC-3'