

**Role of *p53* isoforms in the DNA damage response during *Drosophila* oogenesis**

**Ji-Hong Park<sup>1§</sup>, Tram Thi Ngoc Nguyen<sup>1§</sup>, Eun-Mi Lee<sup>2</sup>, Veronica Castro-Aceituno<sup>2</sup>,  
Ram Wagle<sup>1</sup>, Kwang-Soon Lee<sup>2</sup>, Juyoung Choi<sup>2</sup>, and Young-Han Song<sup>1,2\*</sup>**

<sup>1</sup>Department of Biomedical Gerontology, Hallym University, Chuncheon, Gangwon-do,  
Republic of Korea

<sup>2</sup>Ilsong Institute of Life Science, Hallym University, Anyang, Gyeonggi-do, Republic of  
Korea,

**\*Corresponding author:** Young-Han Song. Telephone: 82-31-380-1897, Fax: 82-31-388-  
3427, E-mail: [ysong@hallym.ac.kr](mailto:ysong@hallym.ac.kr)

<sup>§</sup>These authors contributed equally.

Fig. S1

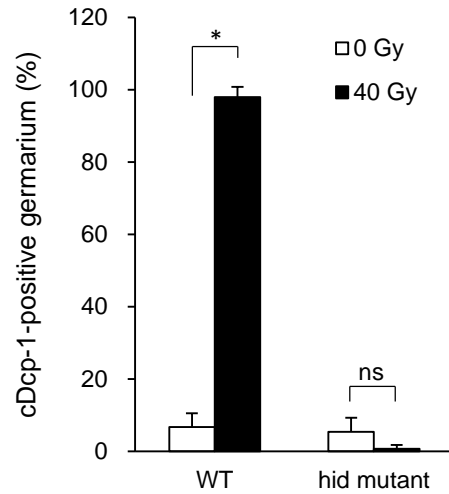


Fig. S1 The wild type and *hid* mutant (*hid[05014]/Df(3L)H99*) females were irradiated at 40 Gy and cleaved Dcp-1 (cDcp-1) staining was performed with the ovaries 6 h after irradiation. The percentages of cDcp-1-positive germline cells in the germline region 2 were determined. The values are the mean  $\pm$  SD of two independent experiments (ns  $p > 0.05$ , \*  $p < 0.05$ ). At least 118 germline in total were counted for each sample.



Fig. S3

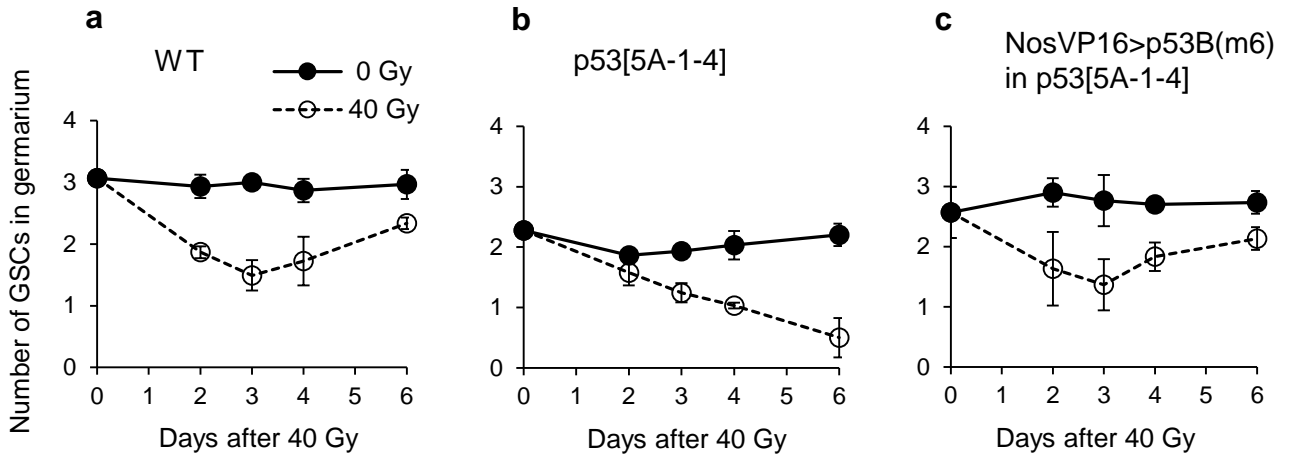


Fig. S3. The number of germline stem cells after irradiation in wild type and p53 mutant females. Females of indicated genotype (a: wild type, b:  $p53^{5A-1-4}$ , c:  $GAL4-NosVP16/UASp-p53B$ ;  $p53^{5A-1-4}$ ) were irradiated at 0 or 40 Gy and the ovaries were dissected and stained with 1B1, Vasa, and Lamin C to detect fusome, germline cells, and cap cells, respectively. The average number of germline stem cells in the germarium was determined. Values are mean  $\pm$  SD for at least two independent experiments. At least 28 germarium in total were counted for each sample.

Fig. S4

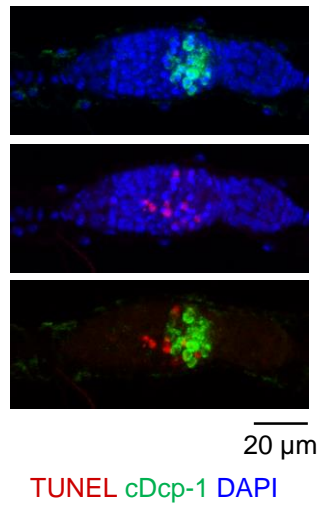
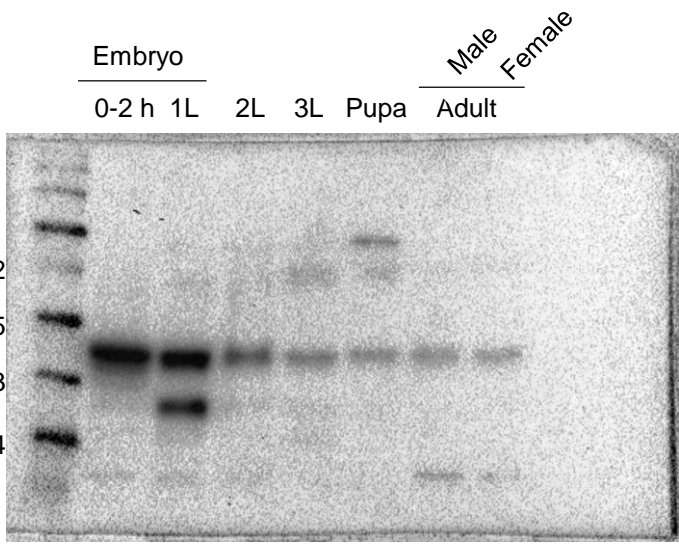


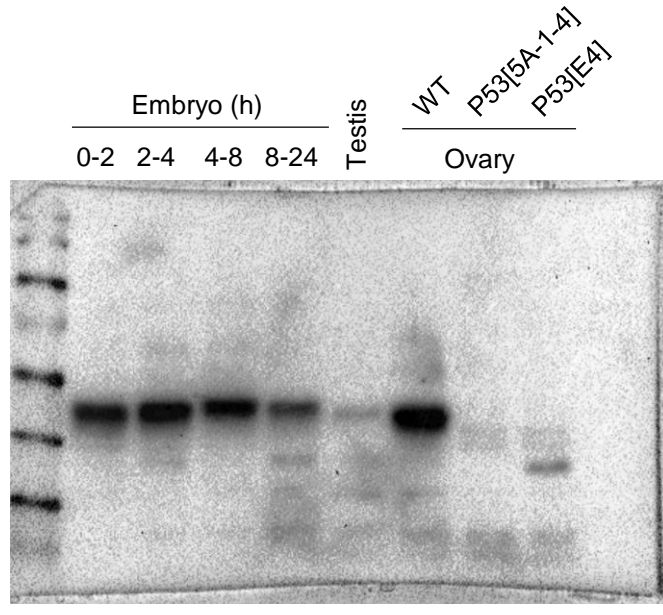
Fig. S4 Wild type adult females were irradiated at 3 Gy and dying cells in the ovary were detected by TUNEL and cleaved Dcp-1 (cDcp-1) double staining. Representative images of TUNEL (red) and cDcp-1 (green)-positive germarium 6 h after 3 Gy irradiation are shown. DAPI (blue) staining shows DNA.

Fig. S5. Uncropped images of western blots of Fig. 3a.

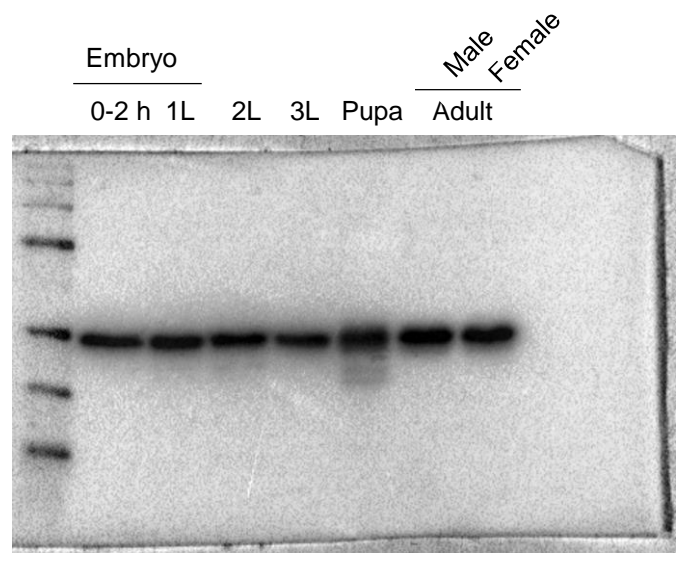
Fig. 3a



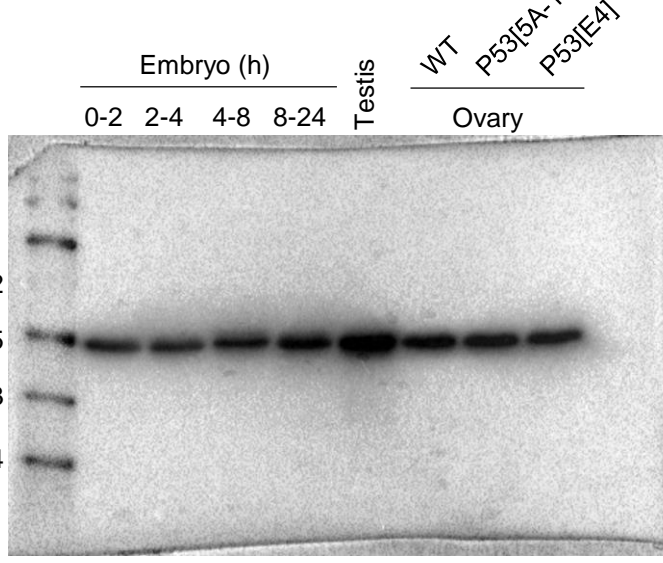
Anti-p53 E5



Anti-p53 E5



Anti- $\alpha$ -Tubulin

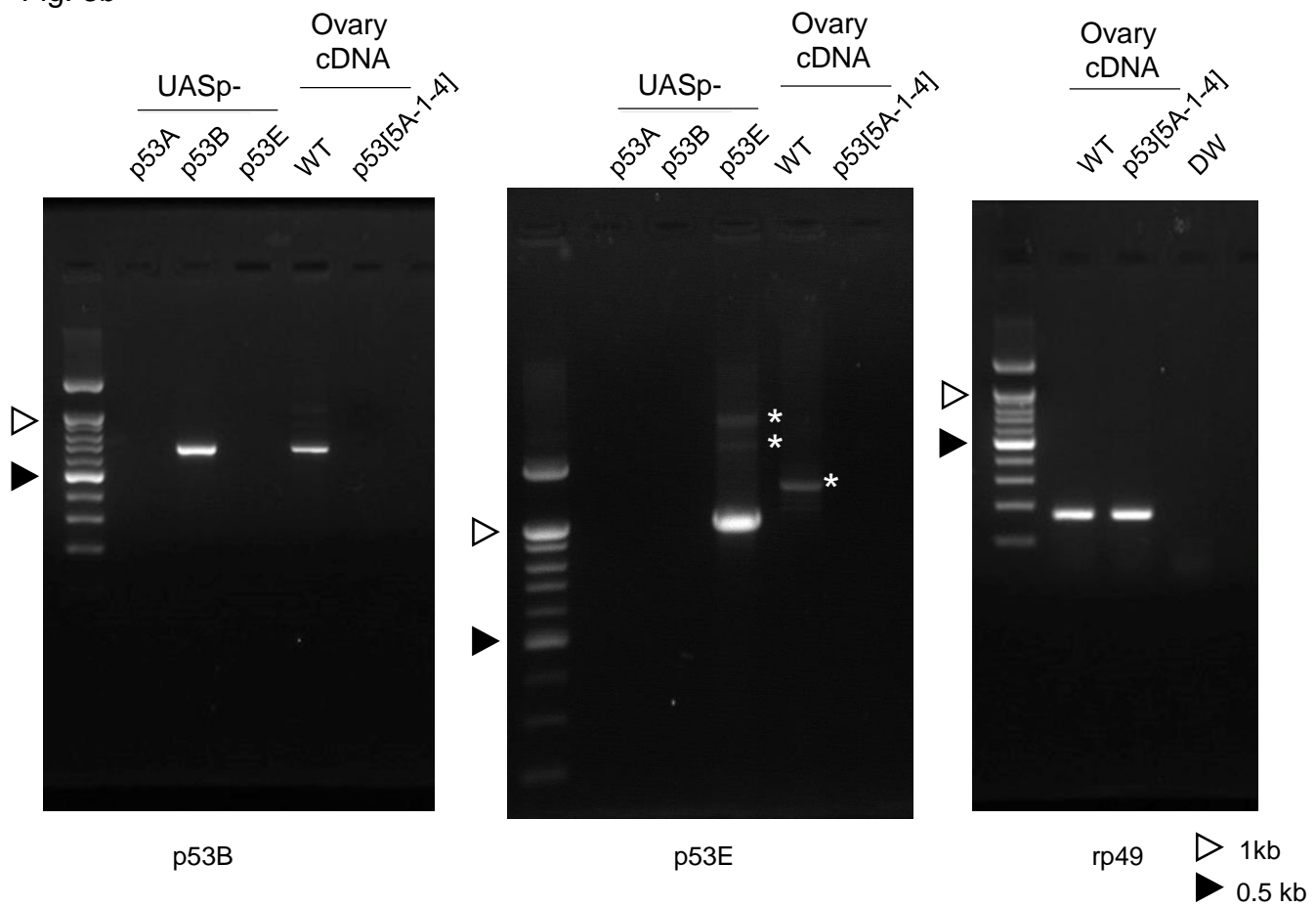


Anti- $\alpha$ -Tubulin

The membrane immunoblotted with anti-p53 antibody was stripped and reprobed with anti- $\alpha$ -Tubulin antibody.

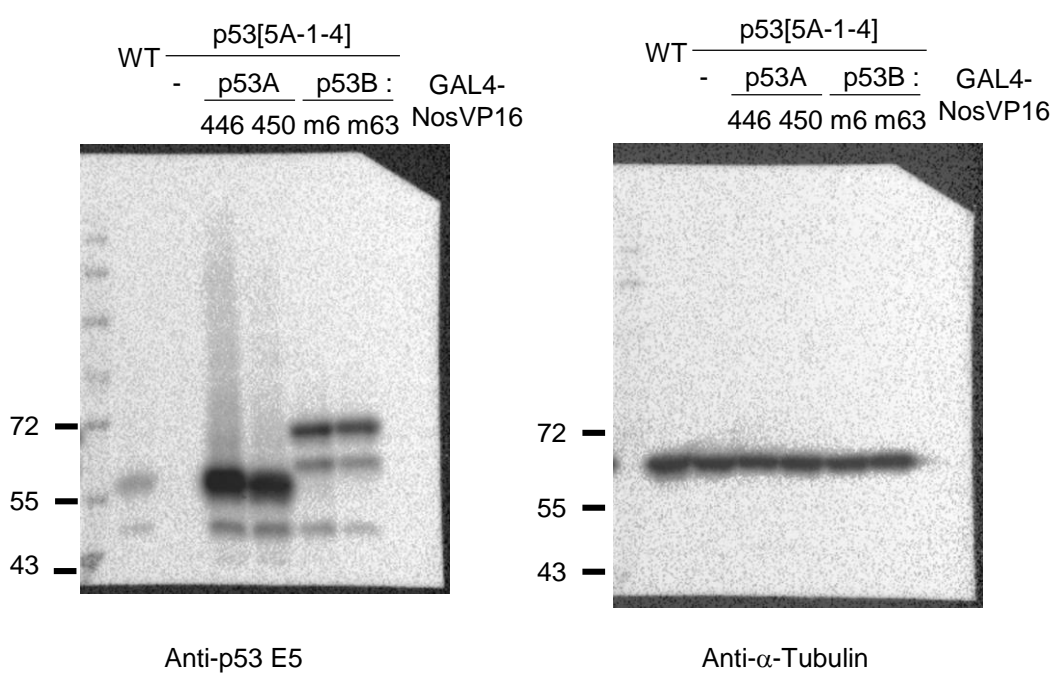
Fig. S5. Uncropped images of western blots of Fig. 3b and 3c.

Fig. 3b



Bands indicated with \* may be non-specific signal.

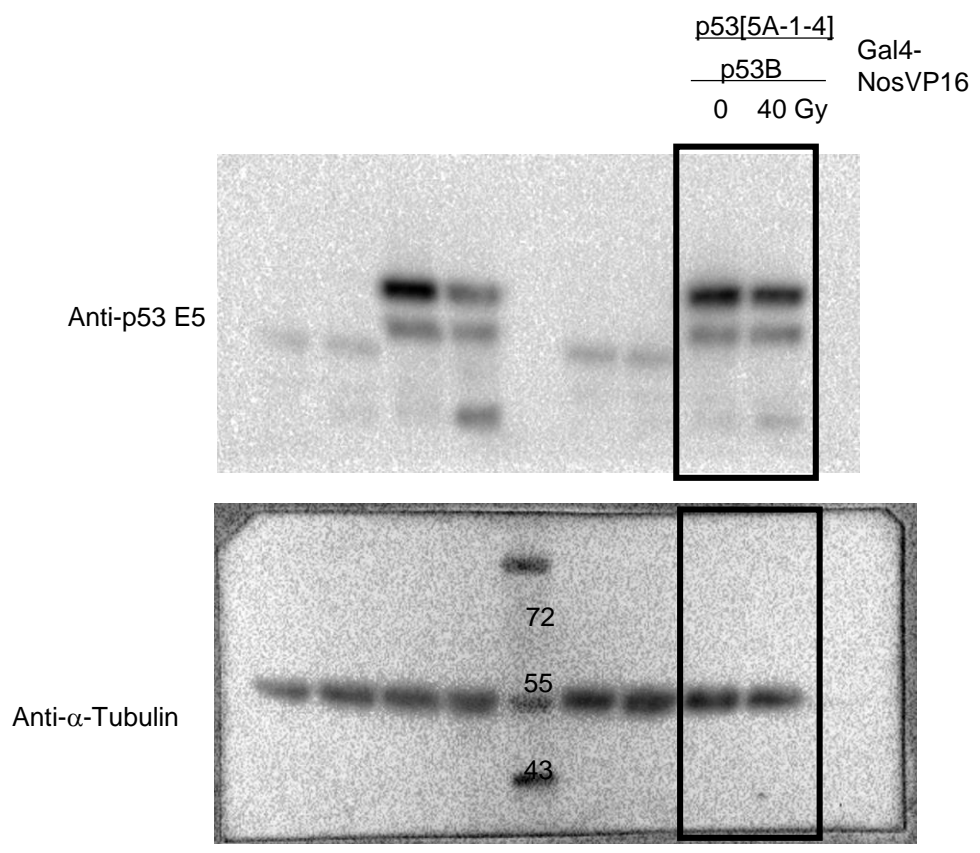
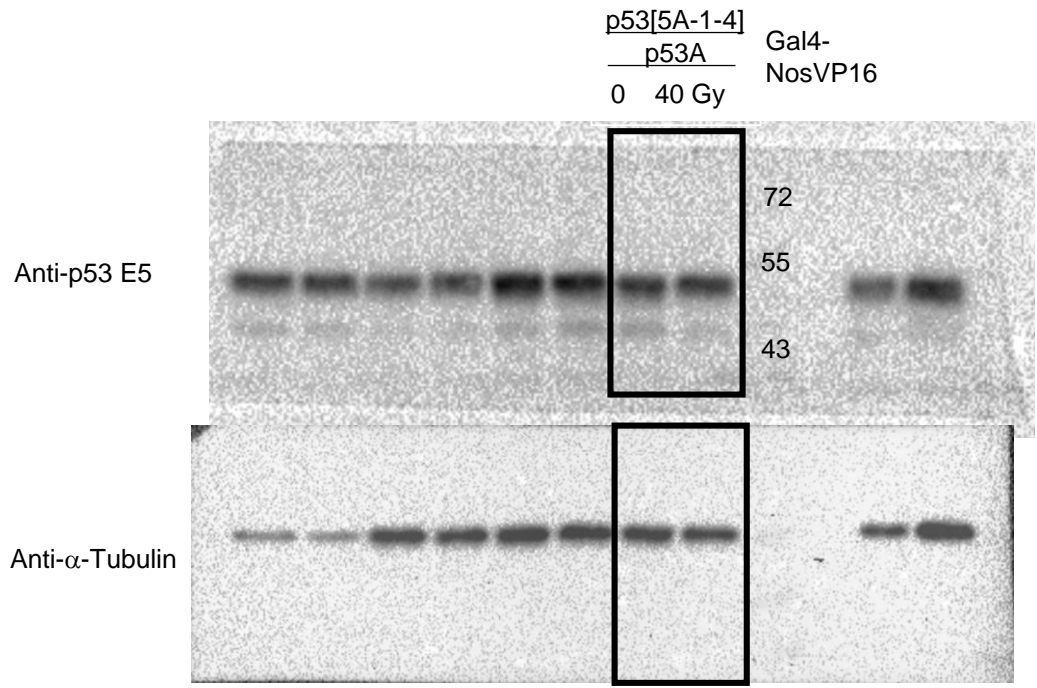
Fig. 3c



The membrane immunoblotted with anti-p53 antibody was stripped and reprobed with anti- $\alpha$ -Tubulin antibody.

Fig. S5. Uncropped images of western blots of Fig. 4a.

Fig. 4a



The membrane immunoblotted with anti-p53 antibody was stripped and reprobed with anti- $\alpha$ -Tubulin antibody.



Fig. S5. Uncropped images of western blots of Fig. 4b and 6a.

Fig. 4b

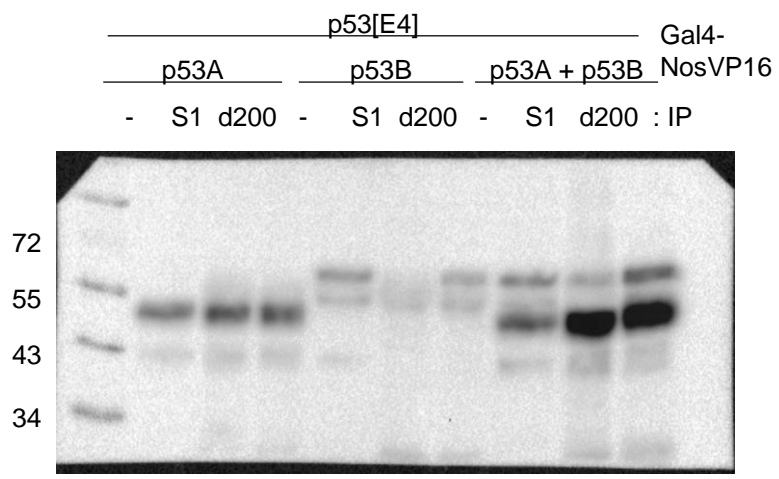
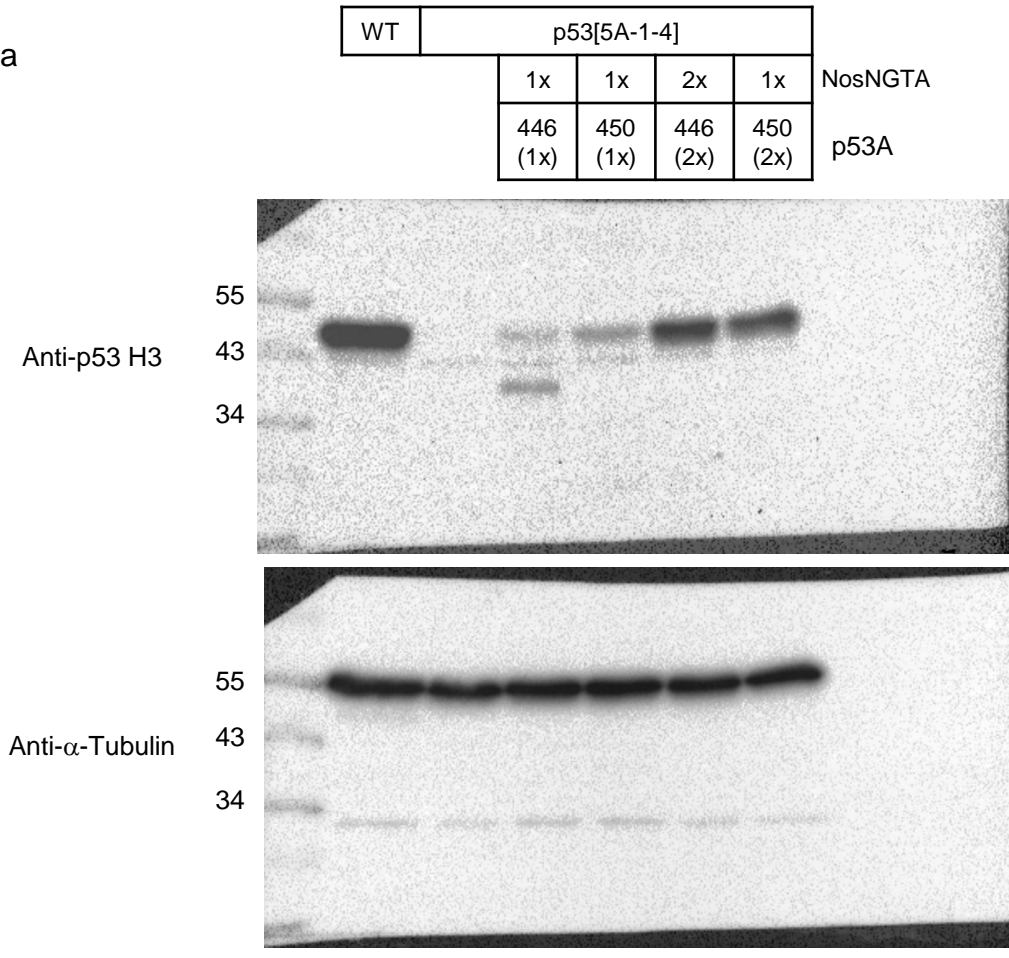


Fig. 6a



The membrane immunoblotted with anti-p53 antibody was stripped and reprobed with anti- $\alpha$ -Tubulin antibody.